



Page 197

This map is based on Ordnance Survey material with the permission of Ordnance Survey on behalf of HMSO. Unauthorised reproduction infringes Crown Copyright and may lead to prosecution or Civil proceedings. London Borough of Merton 100019259. 2012.

**DEVELOPMENT CONTROL**

Car Park

Milner Road

Scale 1/1250

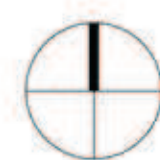
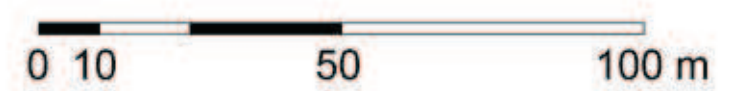
Date 5/5/2015

London Borough of Merton  
 100 London Road  
 Morden  
 Surrey  
 SM4 5DX





Ordnance Survey, 63 Crown Copyright 2014. All rights reserved. Licence number 100022432



**FeldenCleggBradleyStudios**  
 LLP  
 London Office  
 Tottenham Street  
 London  
 W1T 4RF  
 t +44 20 7323 5737  
 f london@fcbstudios.com

Amendment  
 1 Issued for Planning

Date  
 23.01.2015  
 23.01.2015

Job/Drawing No  
**1782-FCB-A-010**  
 Morden Road  
 Site Location Plan  
 Scale 1 : 1250 @ A1 (1:2500 @ A3)  
 Date January 2015  
 Drawn Studio 26

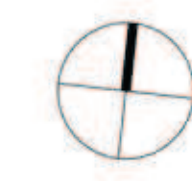
Amendment  
**P1**

Do Not Scale  
 All Dimensions to be checked on site



MILNER ROAD

MORDEN ROAD



FeldenCleggBradleyStudios  
 LLP  
 London Office  
 Tottenham Street  
 London  
 W1T 4RF  
 t +44 20 7323 5737  
 f  
 e london@fcbstudios.com

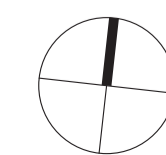
Amendment  
 1 Issued for Planning

Date  
 23.01.2015

Job/Drawing No  
 1782-FCB-A-0200  
 Morden Road  
 Level 0 Plan  
 Scale 1:100 @ A1 (1:200 @ A3)  
 Date October 2014  
 Drawn Studio 26

Amendment  
 P1

Do Not Scale  
 All Dimensions to be checked on site



FeildenCleggBradleyStudios  
 LLP  
 London Office  
 Tottenham Street  
 London  
 W1T 4RF  
 t +44 20 7323 5737  
 f london@fcbstudios.com

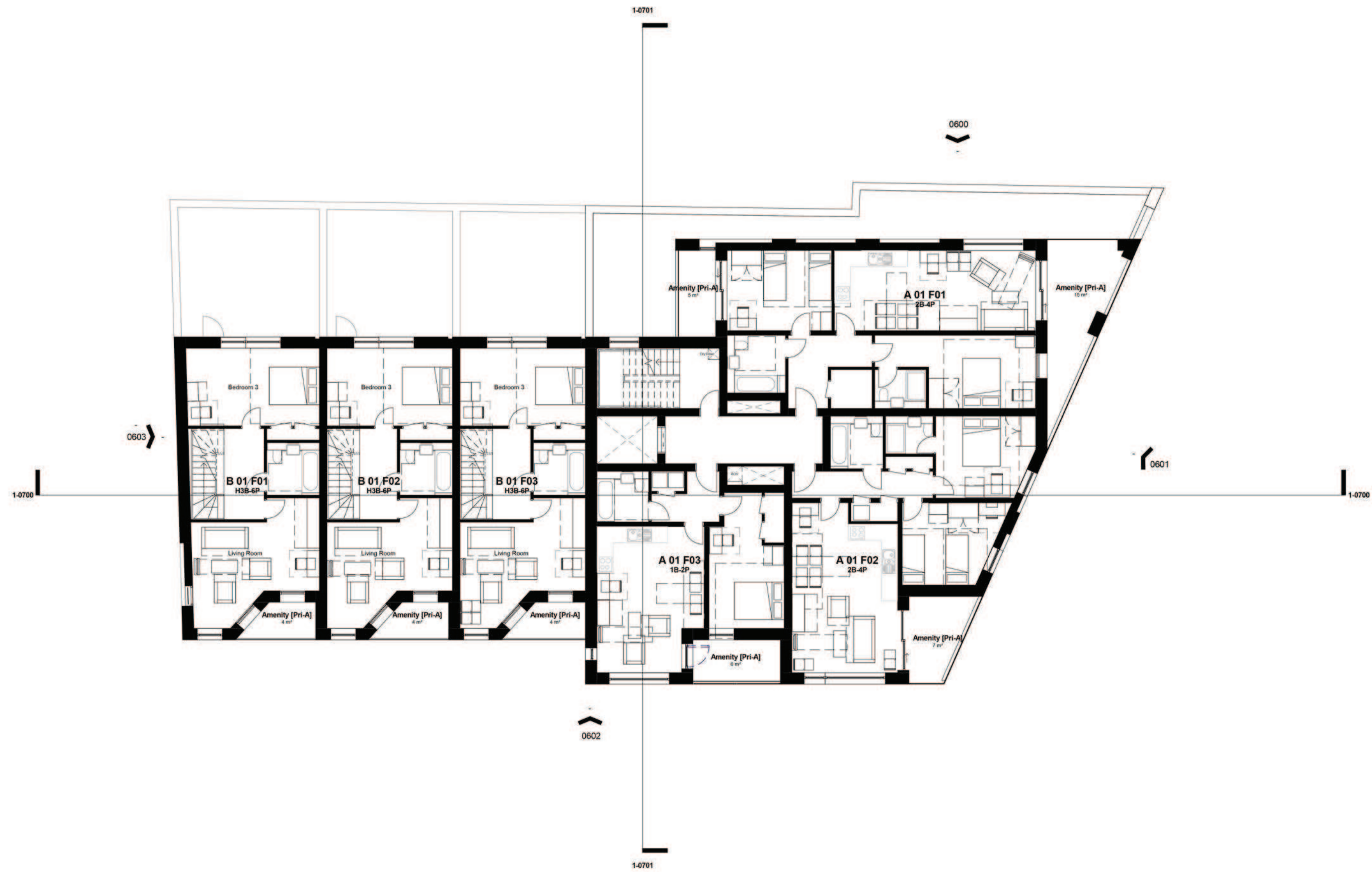
Amendment  
 1 Issued for Planning  
 2 Issued for Planning

Date  
 23.01.2015  
 28.04.2015  
 28.04.2015

Job/Drawing No  
 1782-FCB-A-0200  
 Morden Road  
 Level 0 Plan  
 Scale 1 : 100 @ A1 (1:200 @ A3)  
 Date October 2014  
 Drawn Studio 26

Amendment  
 P2

Do Not Scale  
 All Dimensions to be checked on site



FeltonCleggBradleyStudios  
LLP  
London Office  
Tottenham Street  
London  
W1T 4RF  
t +44 20 7323 5737  
f  
e london@fcbstudios.com

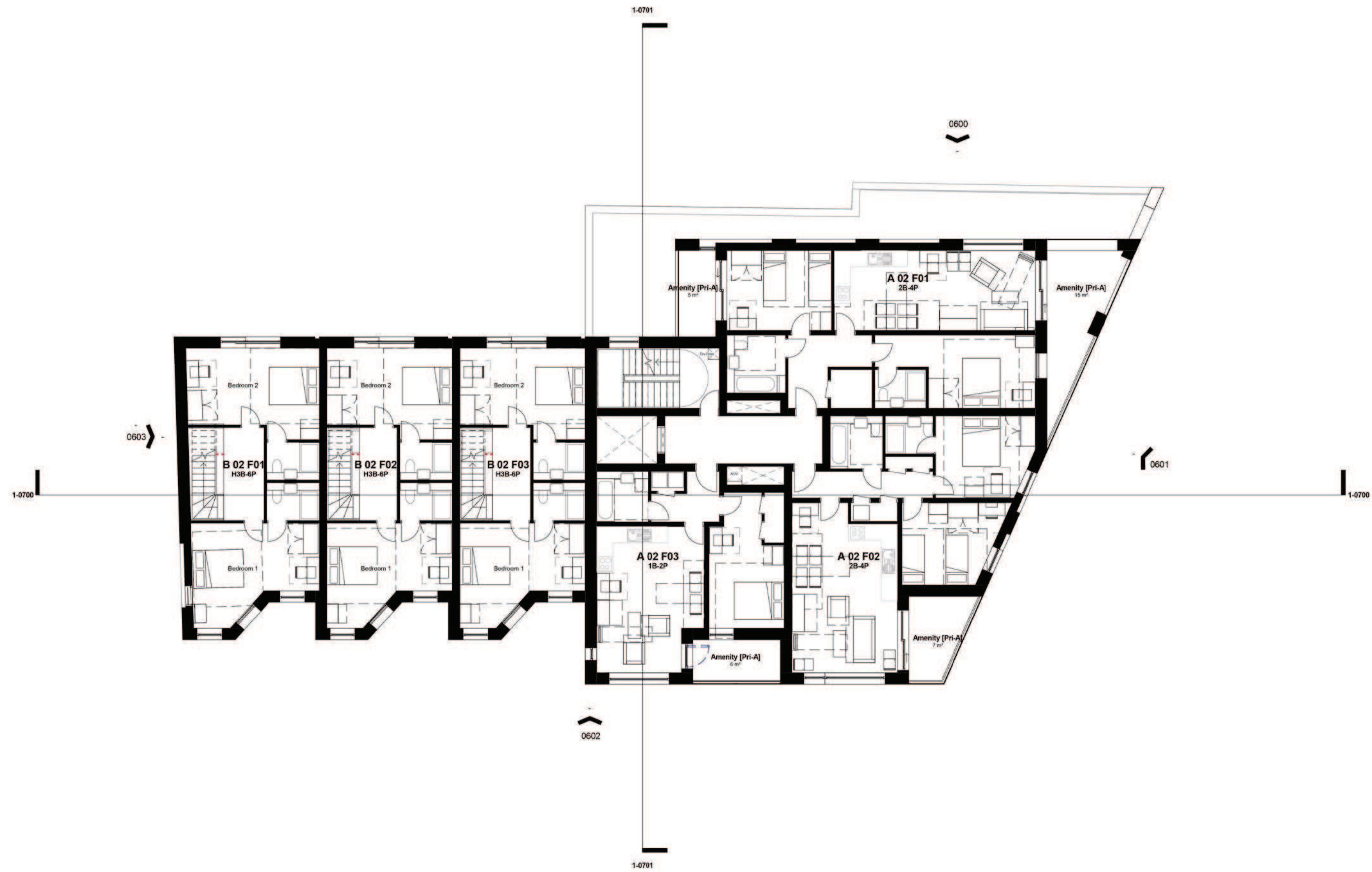
Amendment  
1 Issued for Planning

Date  
23.01.2015

Job/Drawing No  
**1782-FCB-A-0201**  
Morden Road  
Level 1 Plan  
Scale 1:100 @ A1 (1:200 @ A3)  
Date October 2014  
Drawn Studio 26

Amendment  
**P1**

Do Not Scale  
All Dimensions to be checked on site



FelddenCleggBradleyStudios  
 LLP  
 London Office  
 Tottenham Street  
 London  
 W1T 4RF  
 t +44 20 7323 5737  
 f london@fcbstudios.com

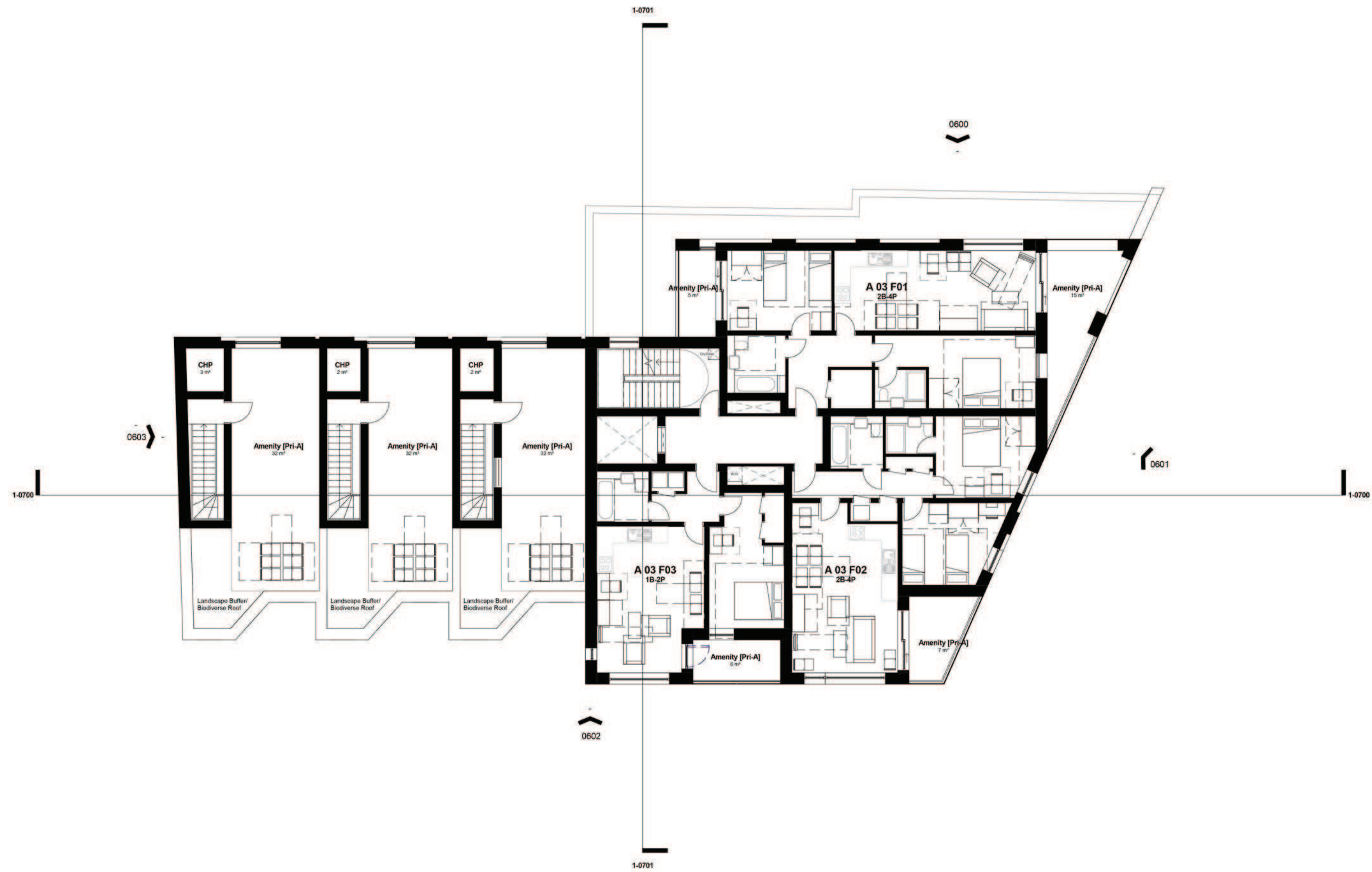
Amendment  
 1 Issued for Planning

Date  
 23.01.2015

Job/Drawing No  
 1782-FCB-A-0202  
 Morden Road  
 Level 2 Plan  
 Scale 1:100 @ A1 (1:200 @ A3)  
 Date October 2014  
 Drawn Studio 26

Amendment  
 P1

Do Not Scale  
 All Dimensions to be checked on site



FeldenCleggBradleyStudios  
 LLP  
 London Office  
 Tottenham Street  
 London  
 W1T 4RF  
 t +44 20 7323 5737  
 f london@fcbstudios.com

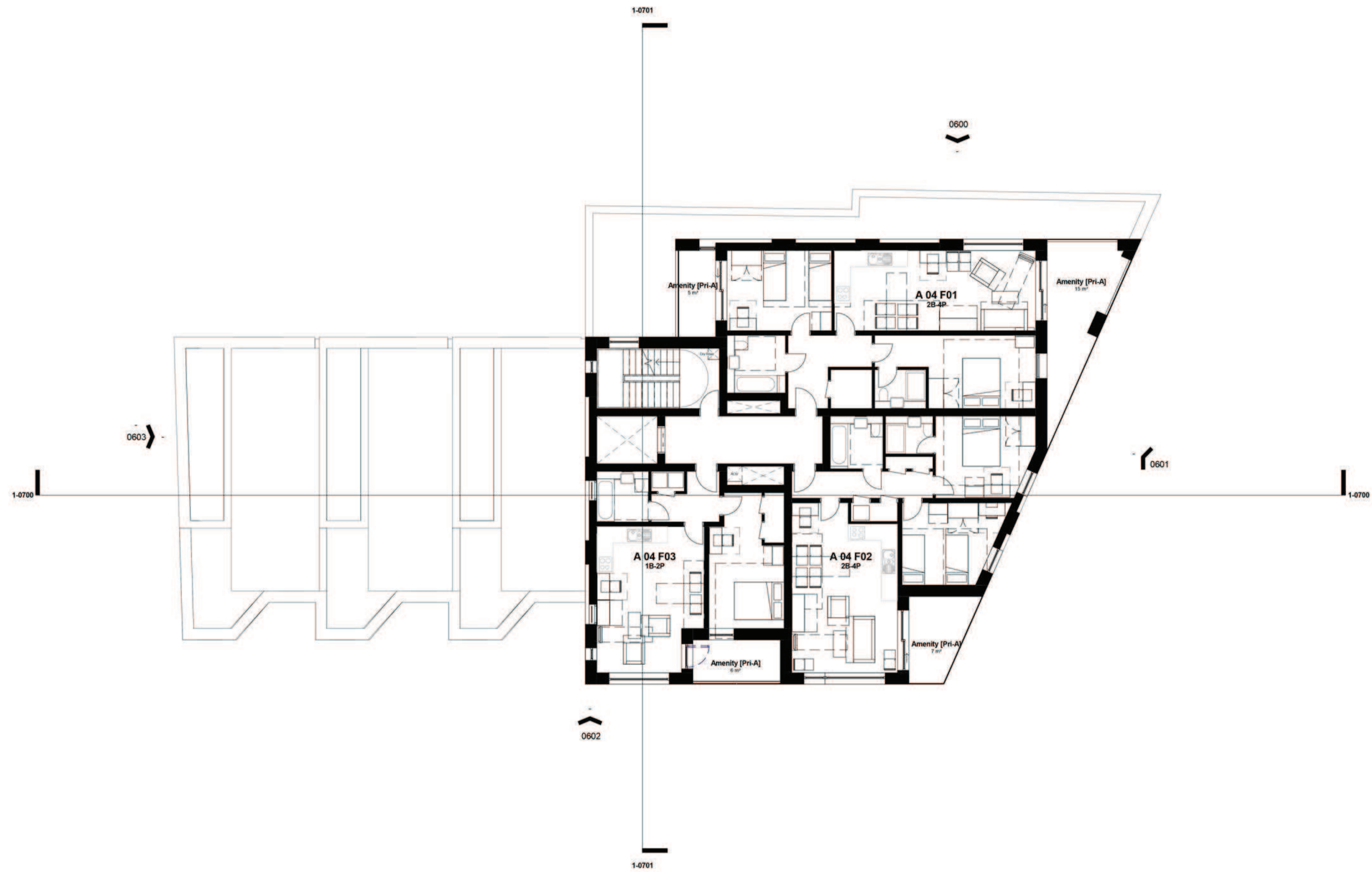
Amendment  
 1 Issued for Planning

Date  
 23.01.2015

Job/Drawing No  
 1782-FCB-A-0203  
 Morden Road  
 Level 3 Plan  
 Scale 1:100 @ A1 (1:200 @ A3)  
 Date October 2014  
 Drawn Studio 26

Amendment  
 P1

Do Not Scale  
 All Dimensions to be checked on site



FeltonCleggBradleyStudios  
 LLP  
 London Office  
 Tottenham Street  
 London  
 W1T 4RF  
 t +44 20 7323 5737  
 f london@fcbstudios.com

Amendment  
 1 Issued for Planning

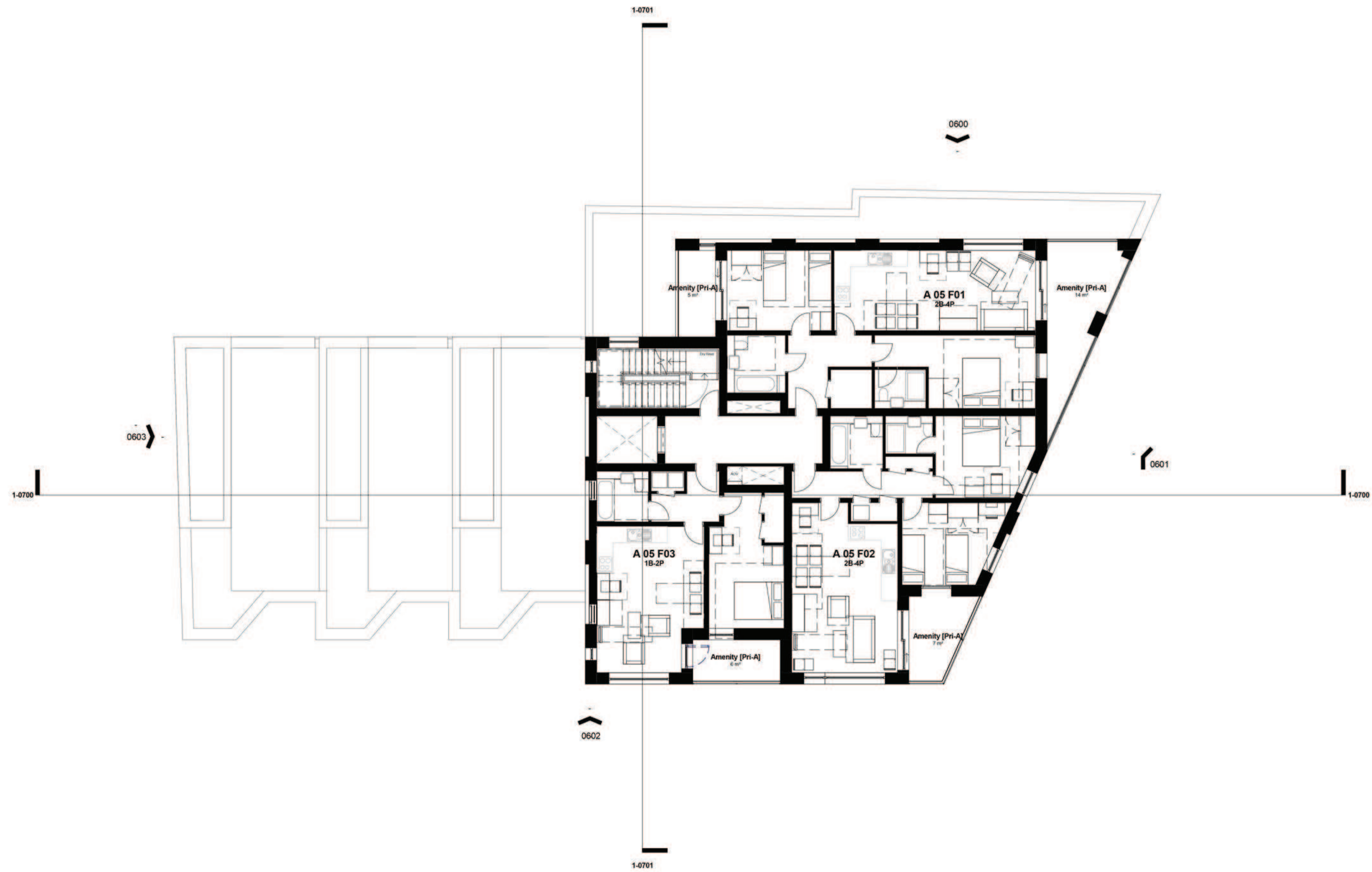
Date  
 23.01.2015  
 23.01.2015

Job/Drawing No  
 1782-FCB-A-0204  
 Morden Road  
 Level 4 Plan  
 Scale 1:100 @ A1 (1:200 @ A3)  
 Date 10/13/14  
 Drawn Author

Amendment  
 P1

Do Not Scale  
 All Dimensions to be checked on site





**FelddenCleggBradleyStudios**  
 LLP  
 London Office  
 Tottenham Street  
 London  
 W1T 4RF  
 t +44 20 7323 5737  
 f  
 e london@fcbstudios.com

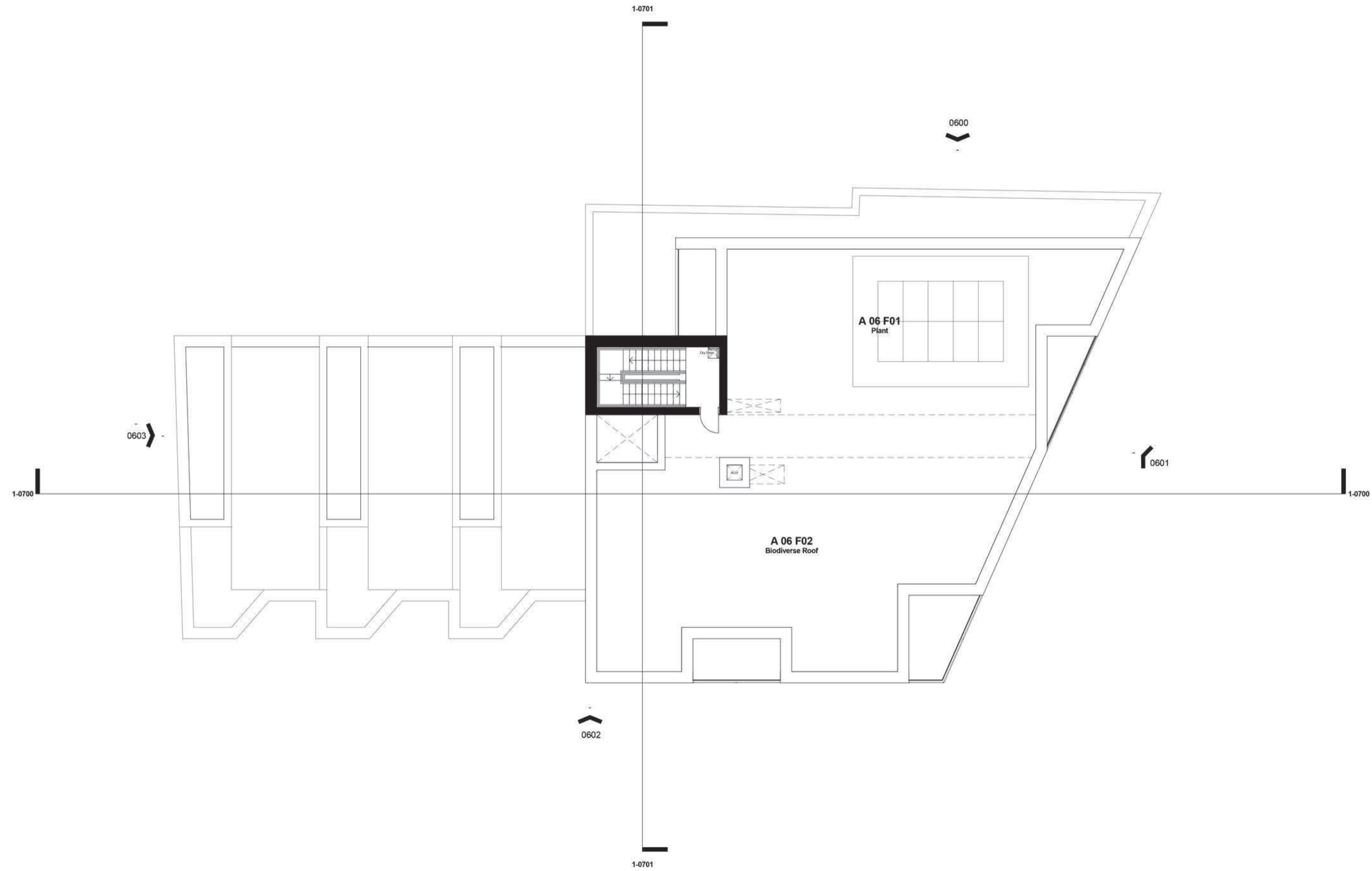
Amendment  
 1 Issued for Planning

Date  
 23.01.2015  
 23.01.2015

Job/Drawing No  
**1782-FCB-A-0205**  
 Morden Road  
 Level 5 Plan  
 Scale 1:100 @ A1 (1:200 @ A3)  
 Date October 2014  
 Drawn Studio 26

Amendment  
**P1**

Do Not Scale  
 All Dimensions to be checked on site



FeildenCleggBradleyStudios  
 LLP  
 London Office  
 Tottenham Street  
 London  
 W1T 4RF  
 t +44 20 7323 5737  
 f  
 e london@fcbstudios.com

Amendment  
 1 Issued for Planning

Date  
 23.01.2015  
 23.01.2015

Job/Drawing No  
 1782-FCB-A-0206  
 Morden Road  
 Level 6 Plan  
 Scale 1:100 @ A1 (1:200 @ A3)  
 Date 10/13/14  
 Drawn Author

Amendment  
 P1

Do Not Scale  
 All Dimensions to be checked on site



KEY:

- |  |  |                                       |
|--|--|---------------------------------------|
| ① Glazed Terracotta (Module 1)                     | ⑨ Dark Grey House Front Garden Railings  | ⑰ Powder Coated Steel Cycle Room Door |
| ② Glazed Terracotta (Module 2)                     | ⑩ Glazed Door with Dark Grey Frame       | ⑱ Recessed RWP                        |
| ③ Dark Grey Aluminium Window Frames/Doors          | ⑪ Residential Lobby Entrance Glazed Door |                                       |
| ④ Glass Balustrade                                 | ⑫ Commercial Entrance Glazed Door        |                                       |
| ⑤ Dark Grey Aluminium Louvered Panel               | ⑬ Townhouse Timber Front Door            |                                       |
| ⑥ Winter Garden Glazed Panel with Glass Balustrade | ⑭ Powder Coated Steel Bin Store Door     |                                       |
| ⑦ Glazing  | ⑮ Powder Coated Steel Plant Room Door    |                                       |
| ⑧ Aluminium Infill Panel                           | ⑯ Powder Coated Steel Plant Room Door    |                                       |



FeildenCleggBradleyStudios  
LLP  
London Office  
Tottenham Street  
London  
W1T 4RF  
t +44 20 7323 5737  
f e london@fcbstudios.com

Amendment  
1 Issued for Planning

Date  
23.01.2015

Job/Drawing No  
1782-FCB-A-0600  
Morden Road  
North Elevation  
Scale 1:100 @ A1 (1:200 @ A3)  
Date October 2014  
Drawn Studio 26

Amendment  
P1

Do Not Scale  
All Dimensions to be checked on site

This page is intentionally left blank