
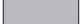



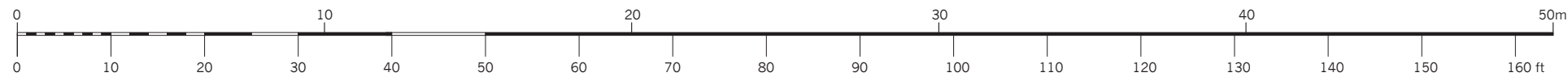
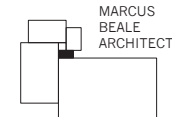


KEY

-  BRICK
-  GLAZING - WINDOWS AND DOORS
-  GLAZING - BALCONIES
-  METAL LOUVRES
-  ZINC CLADDING

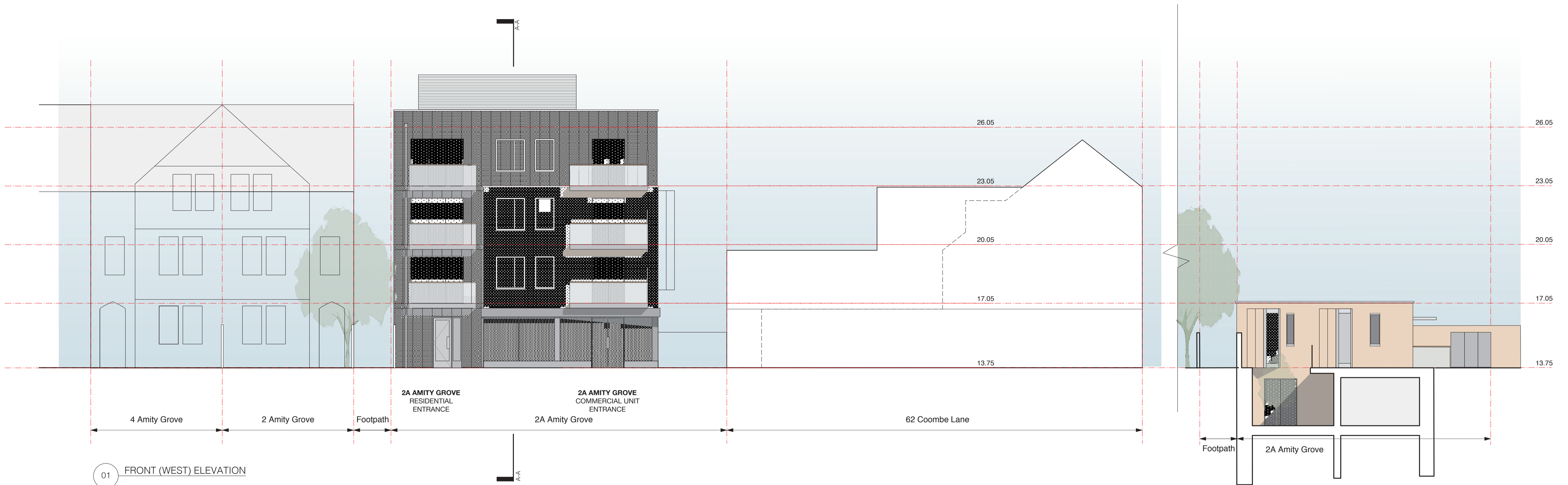


MBA, 1 Compton Road  
Wimbledon, London SW19 7QA  
Phone +44 (0) 20 8946 4141  
Fax +44 (0) 20 8946 2299  
Email mba@marcus-beale.co.uk  
www.marcus-beale.co.uk



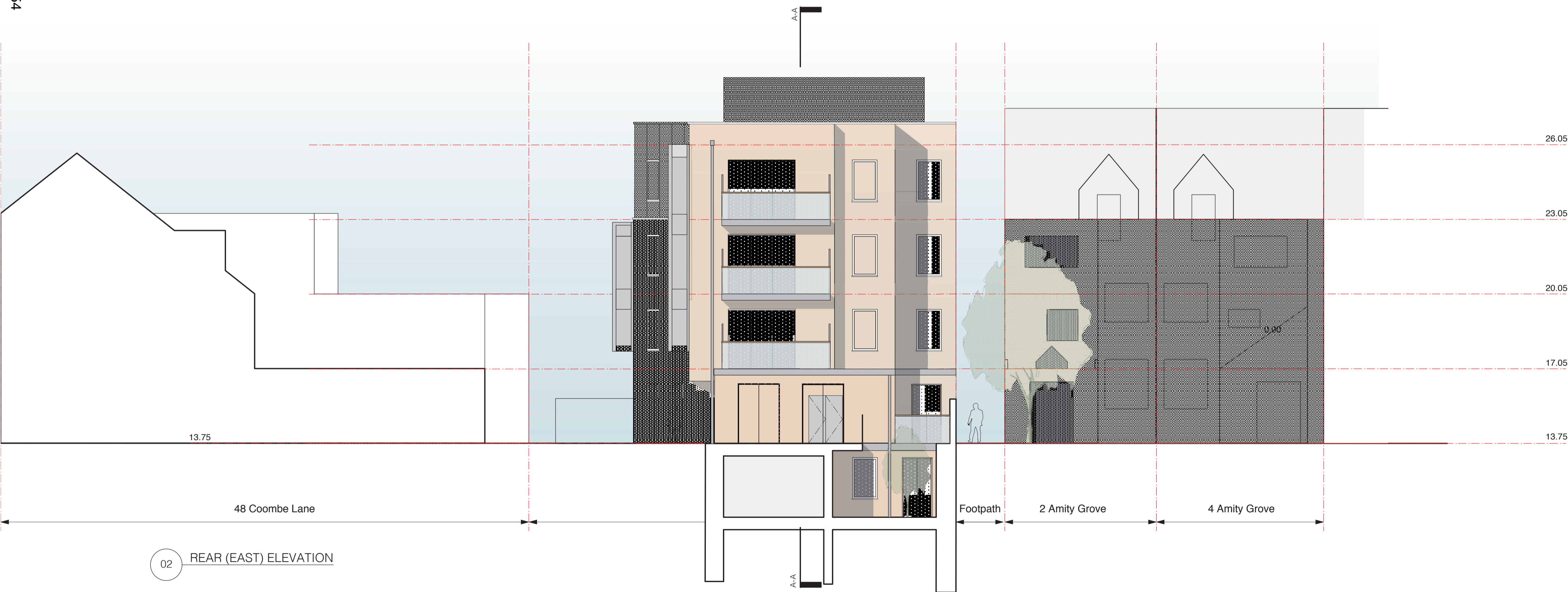
P2 - 27/03/15 - FOR PLANNING  
B - 19/02/15 - ISSUED FOR INFORMATION

2A AMITY GROVE, SW20 0LJ		ELEVATIONS - SHEET 2 OF 3		PROPOSED
Scale	1:200 @ A3	Drawn	HS	602/051 P2
Date	15/01/2013	Check	TG	
Revisions				



01 FRONT (WEST) ELEVATION

03 FRONT (WEST) ELEVATION OF REAR FLAT

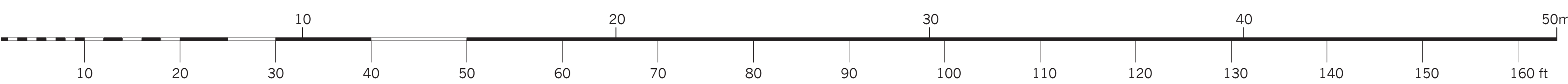


02 REAR (EAST) ELEVATION

**KEY**

	BRICK
	GLAZING - WINDOWS AND DOORS
	GLAZING - BALCONIES
	METAL LOUVRES
	ZINC CLADDING

P4 - 8/06/15 - Zinc anotation shown above residential entrance, rear balustrade removed, bin store and bike lockers swapped  
 P3 - 21/05/15 - FOR PLANNING  
 P2 - 27/03/15 - FOR PLANNING  
 B - 19/02/15 - ISSUED FOR INFORMATION

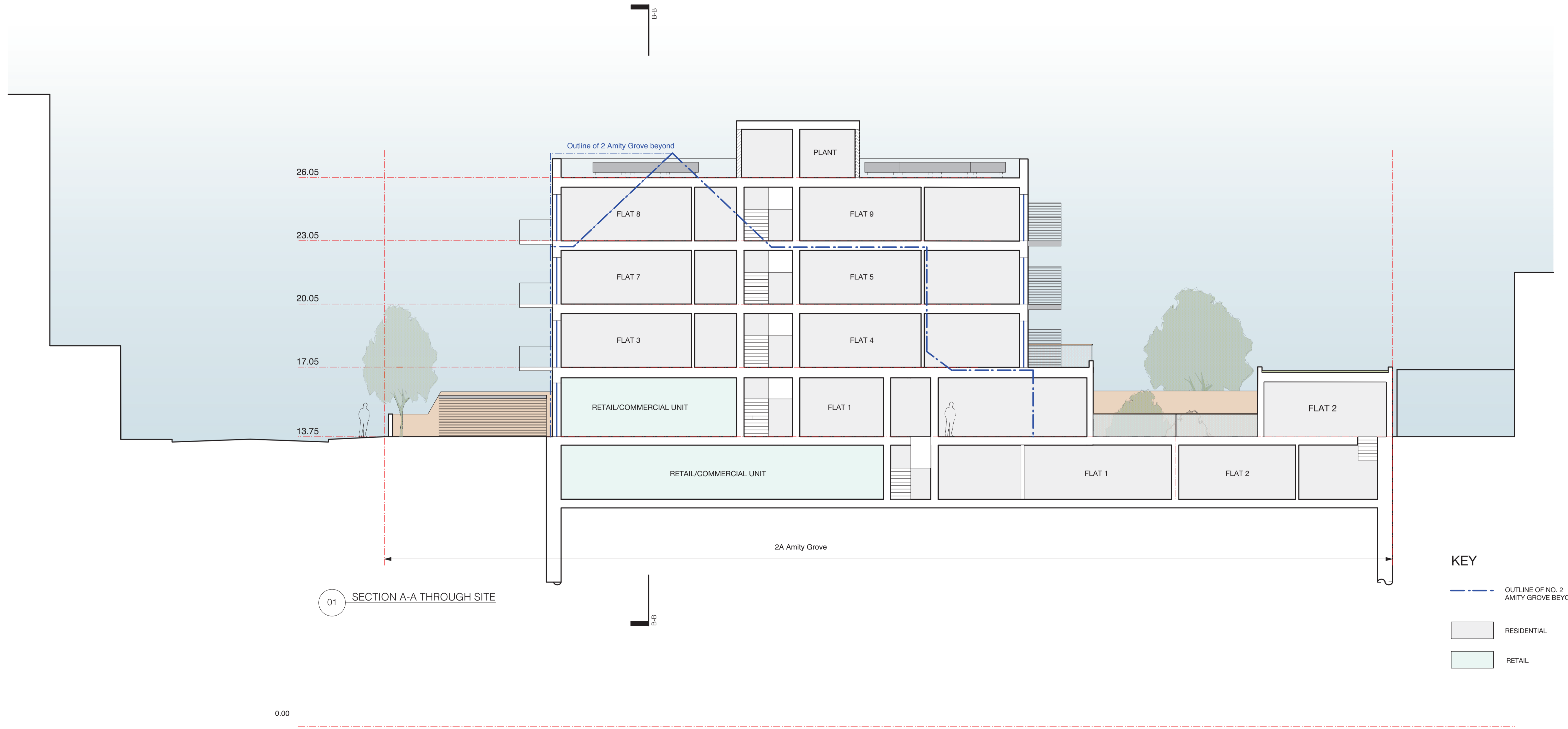


MBA, 1 Compton Road  
Wimbledon, London SW19 7QA  
Phone +44 (0) 20 8946 4141  
Fax +44 (0) 20 8946 2299  
Email mba@marcus-beale.co.uk  
www.marcus-beale.co.uk

**MARCUS BEALE ARCHITECTS**

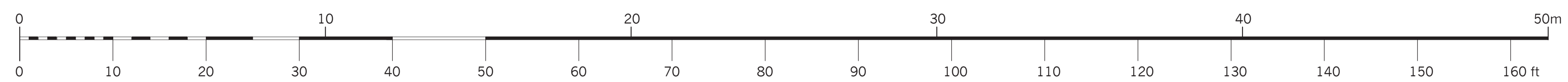
2A AMITY GROVE, SW20 0LJ  
**ELEVATIONS - SHEET 2 OF 3**  
PROPOSED

Scale 1:200 @ A3	Drawn HS	602/051 P4
Date 15/01/2013	Check TG	



**KEY**

- - - OUTLINE OF NO. 2 AMITY GROVE BEYOND
- RESIDENTIAL
- RETAIL



MBA, 1 Compton Road  
Wimbledon, London SW19 7QA  
Phone +44 (0) 20 8946 4141  
Fax +44 (0) 20 8946 2299  
Email mba@marcus-beale.co.uk  
www.marcus-beale.co.uk

**MARCUS BEALE ARCHITECTS**

2A AMITY GROVE, SW20 0LJ  
**SECTIONS AA**  
PROPOSED

Scale 1:200 @ A3	Drawn HS	<b>602/030 P3</b>
Date 31/01/2014	Check TG	

Revisions  
P3 - 4/06/15 - Extension to 2 Amity Grove shown and bin store updated  
P2 - 27/03/15 - FOR PLANNING  
B - 19/02/15 - ISSUED FOR INFORMATION

This page is intentionally left blank