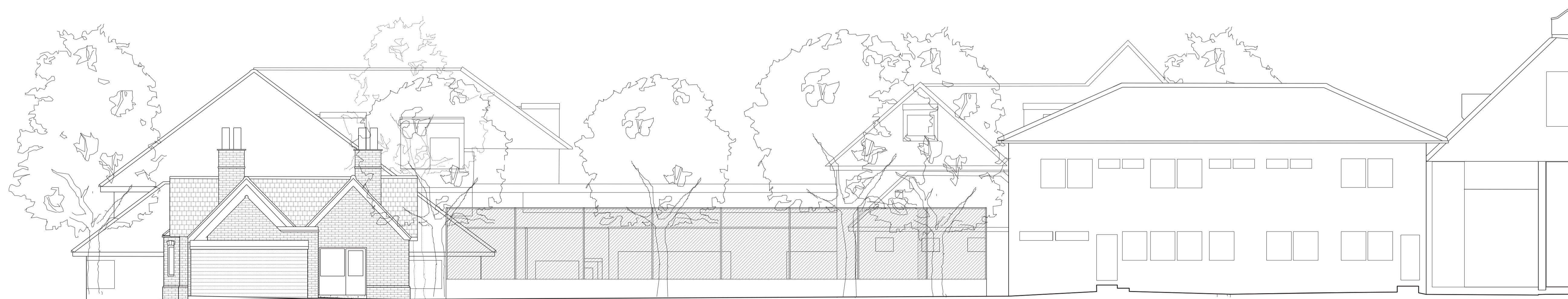




**01** South-West Elevation  
A0500 1:100



**02** South-East Elevation  
A0500 1:100

- General Notes:**
- G1 For Site and Grid setting out refer to AKCSW/3000
  - G2 All dimensions to be checked on site
  - G3 Any discrepancies between drawings to be reported to the Architect immediately.
  - G4 All Levels are above ordnance datum (AOD)  
New Levels are shown thus: D20.345  
Existing Levels are shown thus: EX-20.345  
Retained Existing Levels: EX-20.345
  - G5 Use figured dimensions only. Do not scale from drawings. IF IN DOUBT, ASK.
  - G6 Refer to Structural Engineers drawings for all structural and services information.
  - G7 For tolerances see the Design Drawings and Specifications.
  - G8 For elements of work subject to Contractor's Design, this drawing is indicative of the visual & performance requirements only. The Contractor is responsible for the detailed design and co-ordination of the installation within the parameters defined in the specification, design drawings, contract terms and contract documents.
  - G9 Room numbers are shown thus: 115
  - G10 Door(D) & Window (W) References are shown thus: D1
  - G11 Clear height is shown thus (finished floor to finished soffit) 2750
  - G12 T Sheet Reference shown thus RWS-01
  - G13 Finishes are shown thus: SOP
  - G14 Setting Out Points shown thus: SOP
  - G15 Refer to AKCSW/9100 for T Sheet references, and to AKCSW/9102 for Architectural Specifications.



Work Package	Cost Check	Info/Briefing	Tender	Contract	Construction

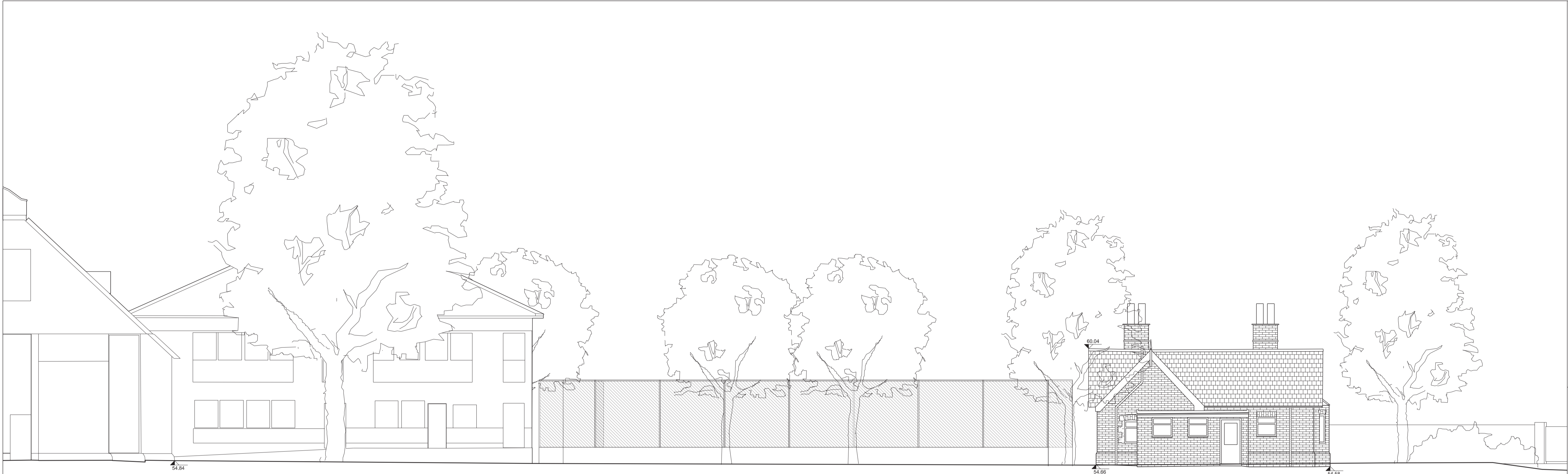
Date	Rev.	Description	Approved By
16.12.2014	-	Issued under Memo 029 for Planning Application	SJ

Date	Rev.	Description	Approved By

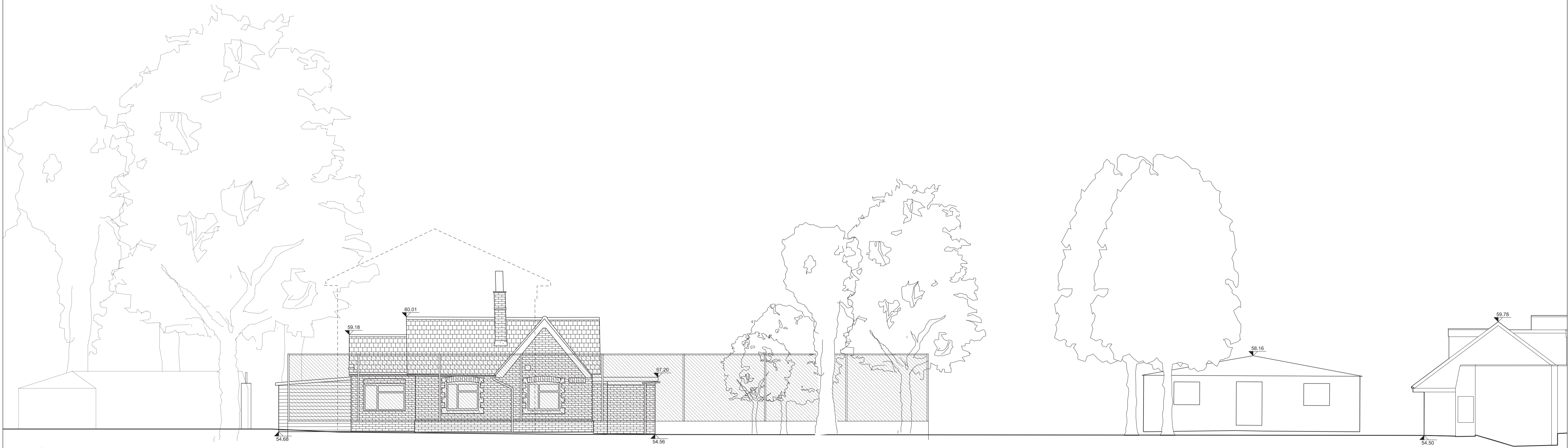
Project	King's College School Wimbledon, Music School
Subject	Existing South Elevations
Architects	Hopkins Architects Partnership LLP 27 Broadley Terrace, London, NW1 6LG T: 020 7724 1751 E: mail@hopkins.co.uk

Sort Code	Drawing Number	Rev.
A/KCSW	<b>0500</b>	-
Date	30.05.2014	Scale 1:100 at A1



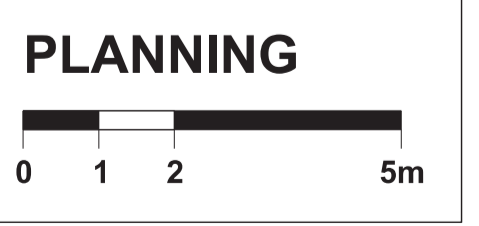


**01** North-West Elevation  
A0503 1:100



**02** North-East Elevation  
A0503 1:100

- General Notes:**
- G1 For Site and Grid setting out refer to AKCSW/3000
  - G2 All dimensions to be checked on site
  - G3 Any discrepancies between drawings to be reported to the Architect immediately.
  - G4 All Levels are above ordnance datum (AOD)  
New Levels are shown thus: D20.345  
Existing Levels are shown thus: EX-20.345  
Retained Existing Levels: EX-20.345
  - G5 Use figured dimensions only. Do not scale from drawings. IF IN DOUBT, ASK.
  - G6 Refer to Structural Engineers drawings for all structural and services information.
  - G7 For tolerances see the Design Drawings and Specifications
  - G8 For elements of work subject to Contractor's Design, this drawing is indicative of the visual & performance requirements only. The Contractor is responsible for the detailed design and co-ordination of the installation within the parameters defined in the specification, design drawings, contract terms and contract documents.
  - G9 Room numbers are shown thus: 115
  - G10 Door(D) & Window (W) References are shown thus: D1 W2
  - G11 Clear height is shown thus (finished floor to finished soffit) 2750
  - G12 T Sheet Reference shown thus INS-01
  - G13 Finishes are shown thus: SOP
  - G14 Setting Out Points shown thus: SOP +
  - G15 Refer to AKCSW/100 for T Sheet references, and to AKCSW/102 for Architectural Specifications.



Work Package	Cost Check	Info/Briefing	Tender	Contract	Construction

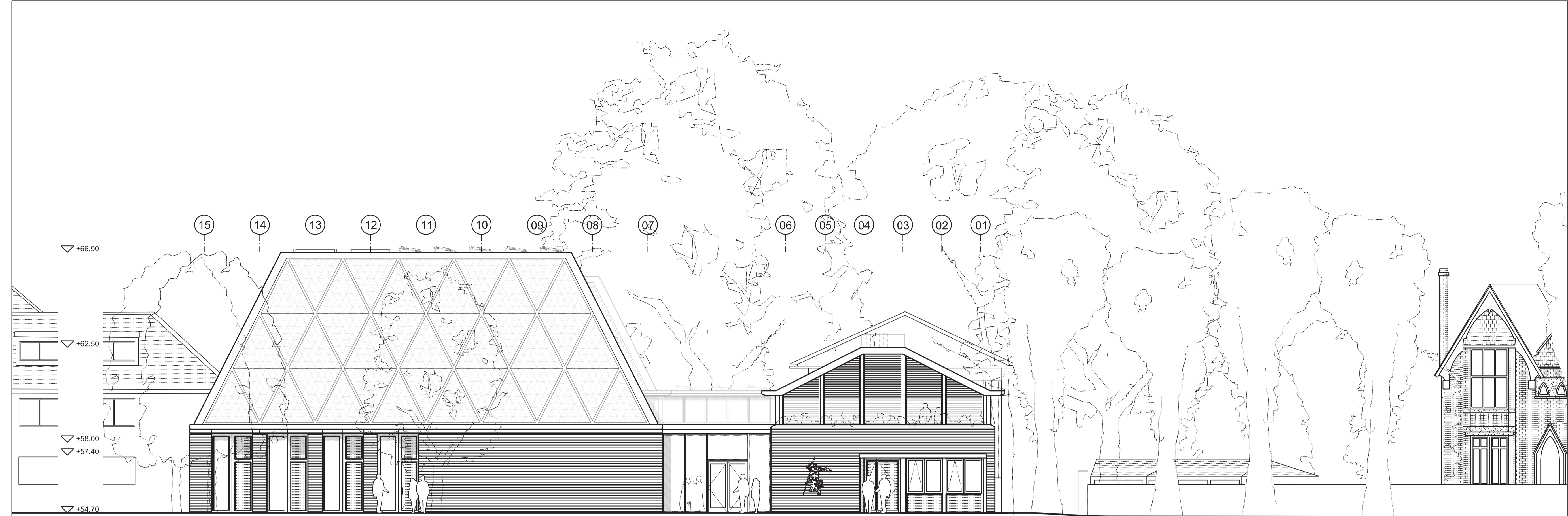
Date	Rev.	Description	Approved By
16.12.2014	-	Issued under Memo 029 for Planning Application	SJ

Date	Rev.	Description	Approved By

Project	King's College School Wimbledon, Music School
Subject	Existing North Elevations
Architects	Hopkins Architects Partnership LLP 27 Broadley Terrace, London, NW1 6LG T: 020 7724 1751 E: mail@hopkins.co.uk

Sort Code	Drawing Number	Rev.
A/KCSW	<b>0503</b>	-
Date	30.05.2014	Scale 1:100 at A1

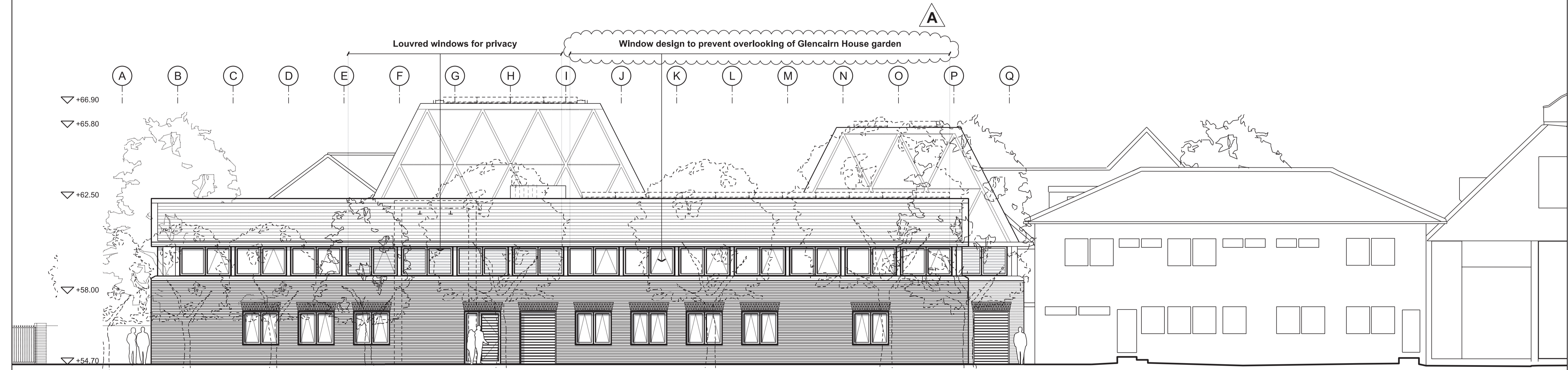




**01** South-West Elevation  
A0502 1:100

Page 301

- General Notes:**
- G1 For Site and Grid setting out refer to AKCSW/3000
  - G2 All dimensions to be checked on site
  - G3 Any discrepancies between drawings to be reported to the Architect immediately.
  - G4 All Levels are above ordnance datum (AOD)  
New Levels are shown thus: D03-210  
Existing Levels are shown thus: EX-03-210  
Retained Existing Levels: EX-20-345
  - G5 Use figured dimensions only. Do not scale from drawings. IF IN DOUBT, ASK.
  - G6 Refer to Structural Engineers drawings for all structural and services information.
  - G7 For tolerances see the Design Drawings and Specifications
  - G8 For elements of work subject to Contractor's Design, this drawing is indicative of the visual & performance requirements only. The Contractor is responsible for the detailed design and co-ordination of the installation within the parameters defined in the specification, design drawings, contract terms and contract documents.
  - G9 Room numbers are shown thus: 115
  - G10 Door(D) & Window (W) References are shown thus: D150
  - G11 Clear height is shown thus (finished floor to finished soffit) 2150
  - G12 T Sheet Reference shown thus W5-01
  - G13 Finishes are shown thus: TOP
  - G14 Setting Out Points shown thus: SOP
  - G15 Refer to AKCSW/9100 for T Sheet references, and to AKCSW/9102 for Architectural Specifications.



**02** South-East Elevation  
A0502 1:100

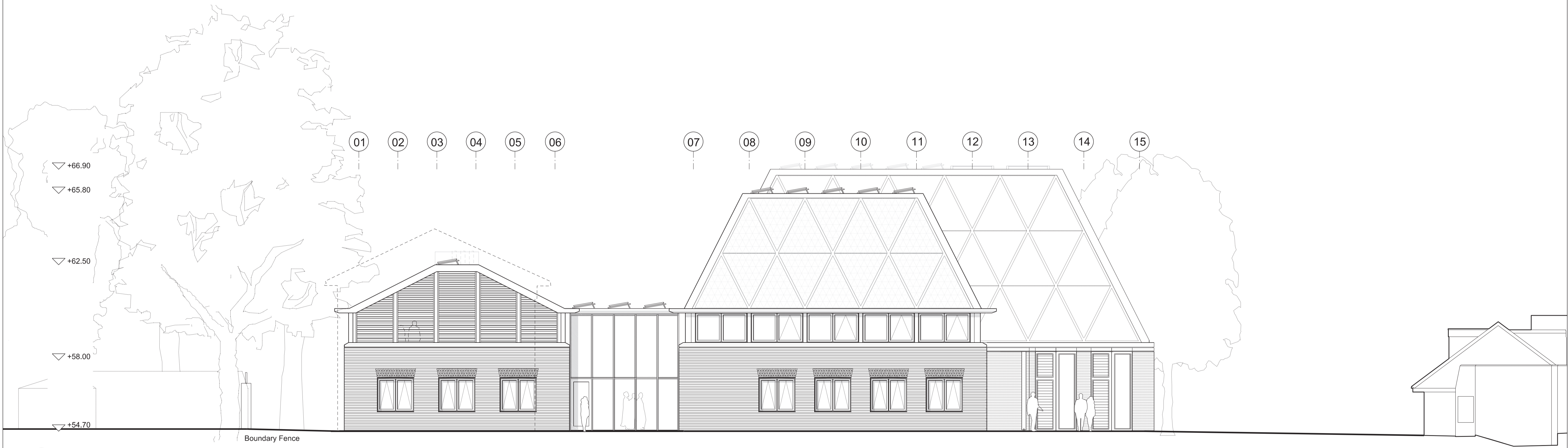
**PLANNING**

Work Package	Cost Check	Info/Briefing	Tender	Contract	Construction	Date	Rev.	Description	Approved By	Date	Rev.	Description	Approved By	Project	Sort Code	Drawing Number	Rev.	
						18.12.2014	-	Issued under Memo 029 for Planning Application	SJ					King's College School Wimbledon, Music School	A/KCSW	0502	A	
						29.01.2015	A	Issued under Memo 032 for Planning Application - revised window design to prevent overlooking of Glencairn House garden	SJ					South Elevations				
														Architects				
														Hopkins Architects Partnership LLP 27 Broadley Terrace, London, NW1 6LG T: 020 7724 1751 E: mail@hopkins.co.uk				
															Date	30.05.2014	Scale	1:100 at A1





**01** North-West Elevation  
A0501 1:100



**02** North-East Elevation  
A0501 1:100

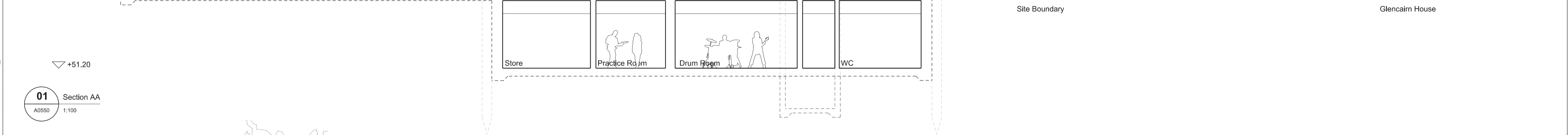
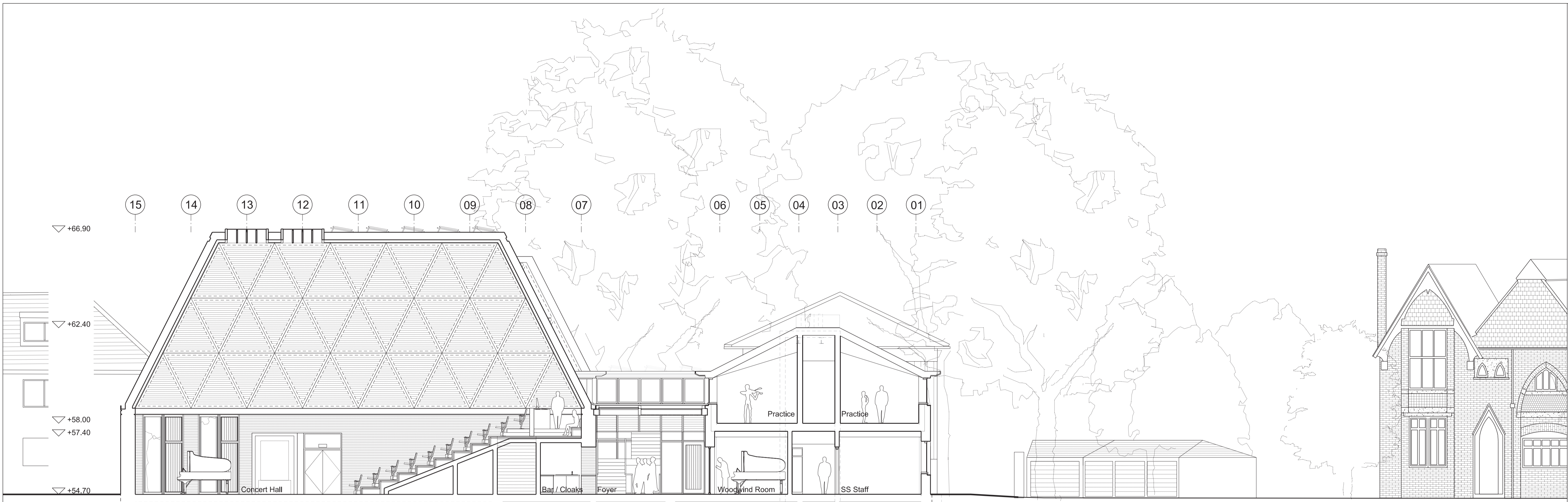
- General Notes:**
- G1 For Site and Grid setting out refer to AKCSW/3000
  - G2 All dimensions to be checked on site
  - G3 Any discrepancies between drawings to be reported to the Architect immediately.
  - G4 All Levels are above ordnance datum (AOD)  
New Levels are shown thus: D20.345  
Existing Levels are shown thus: EX-20.345  
Retained Existing Levels: EX-20.345
  - G5 Use figured dimensions only. Do not scale from drawings. IF IN DOUBT, ASK.
  - G6 Refer to Structural Engineers drawings for all structural and services information.
  - G7 For tolerances see the Design Drawings and Specifications
  - G8 For elements of work subject to Contractor's Design, this drawing is indicative of the visual & performance requirements only. The Contractor is responsible for the detailed design and co-ordination of the installation within the parameters defined in the specification, design drawings, contract terms and contract documents.
  - G9 Room numbers are shown thus: 115
  - G10 Door(D) & Window (W) References are shown thus: D1 W2
  - G11 Clear height is shown thus (finished floor to finished soffit) 2150
  - G12 T Sheet Reference shown thus INS-01
  - G13 Finishes are shown thus: [Symbol]
  - G14 Setting Out Points shown thus: SOP [Symbol]
  - G15 Refer to AKCSW/100 for T Sheet references, and to AKCSW/102 for Architectural Specifications.

**PLANNING**

Work Package	Cost Check	Info/Briefing	Tender	Contract	Construction	Date	Rev.	Description	Approved By	Date	Rev.	Description	Approved By	Project
						16.12.2014	-	Issued under Memo 029 for Planning Application	SJ					King's College School Wimbledon, Music School
														Subject North Elevations
														Architects Hopkins Architects Partnership LLP 27 Broadley Terrace, London, NW1 6LG T: 020 7724 1751 E: mail@hopkins.co.uk

Sort Code	Drawing Number	Rev.
A/KCSW	<b>0501</b>	-
Date	30.05.2014	Scale 1:100 at A1

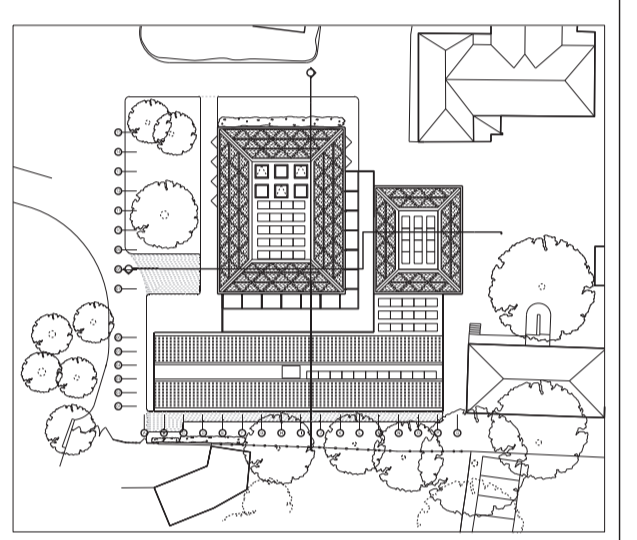




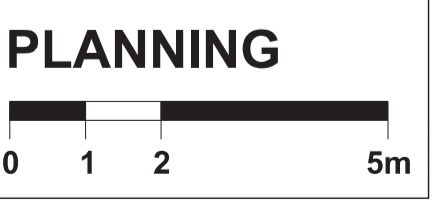
**01** Section AA  
A0550 1:100

**02** Section BB  
A0550 1:100

- General Notes:**
- G1 For Site and Grid setting out refer to AKCSW/3000
  - G2 All dimensions to be checked on site
  - G3 Any discrepancies between drawings to be reported to the Architect immediately.
  - G4 All Levels are above ordnance datum (AOD)  
New Levels are shown thus: D20.345  
Existing Levels are shown thus: EX-20.345  
Retained Existing Levels: EX-20.345
  - G5 Use figured dimensions only. Do not scale from drawings. IF IN DOUBT, ASK.
  - G6 Refer to Structural Engineers drawings for all structural and services information.
  - G7 For tolerances see the Design Drawings and Specifications.
  - G8 For elements of work subject to Contractor's Design, this drawing is indicative of the visual & performance requirements only. The Contractor is responsible for the detailed design and coordination of the installation within the parameters defined in the specification, design drawings, contract terms and contract documents.
  - G9 Room numbers are shown thus: 115
  - G10 Door(D) & Window (W) References are shown thus: D15
  - G11 Clear height is shown thus (finished floor to finished soffit) 2150
  - G12 T Sheet Reference shown thus INS-01
  - G13 Finishes are shown thus: [Symbol]
  - G14 Setting Out Points shown thus: SOP
  - G15 Refer to AKCSW/9100 for T Sheet references, and to AKCSW/9102 for Architectural Specifications.



Site 1.1000 - Section Lines



Work Package	Cost Check	Info/Briefing	Tender	Contract	Construction

Date	Rev.	Description	Approved By
16.12.2014	-	Issued under Memo 029 for Planning Application	SJ

Date	Rev.	Description	Approved By

Project	King's College School Wimbledon, Music School
Subject	Sections AA and BB
Architects	Hopkins Architects Partnership LLP 27 Broadley Terrace, London, NW1 6LG T: 020 7724 1751 E: mail@hopkins.co.uk

Sort Code	Drawing Number	Rev.
A/KCSW	<b>0550</b>	-
Date	30.05.2014	Scale 1:100 at A1



This page is intentionally left blank