



revisions

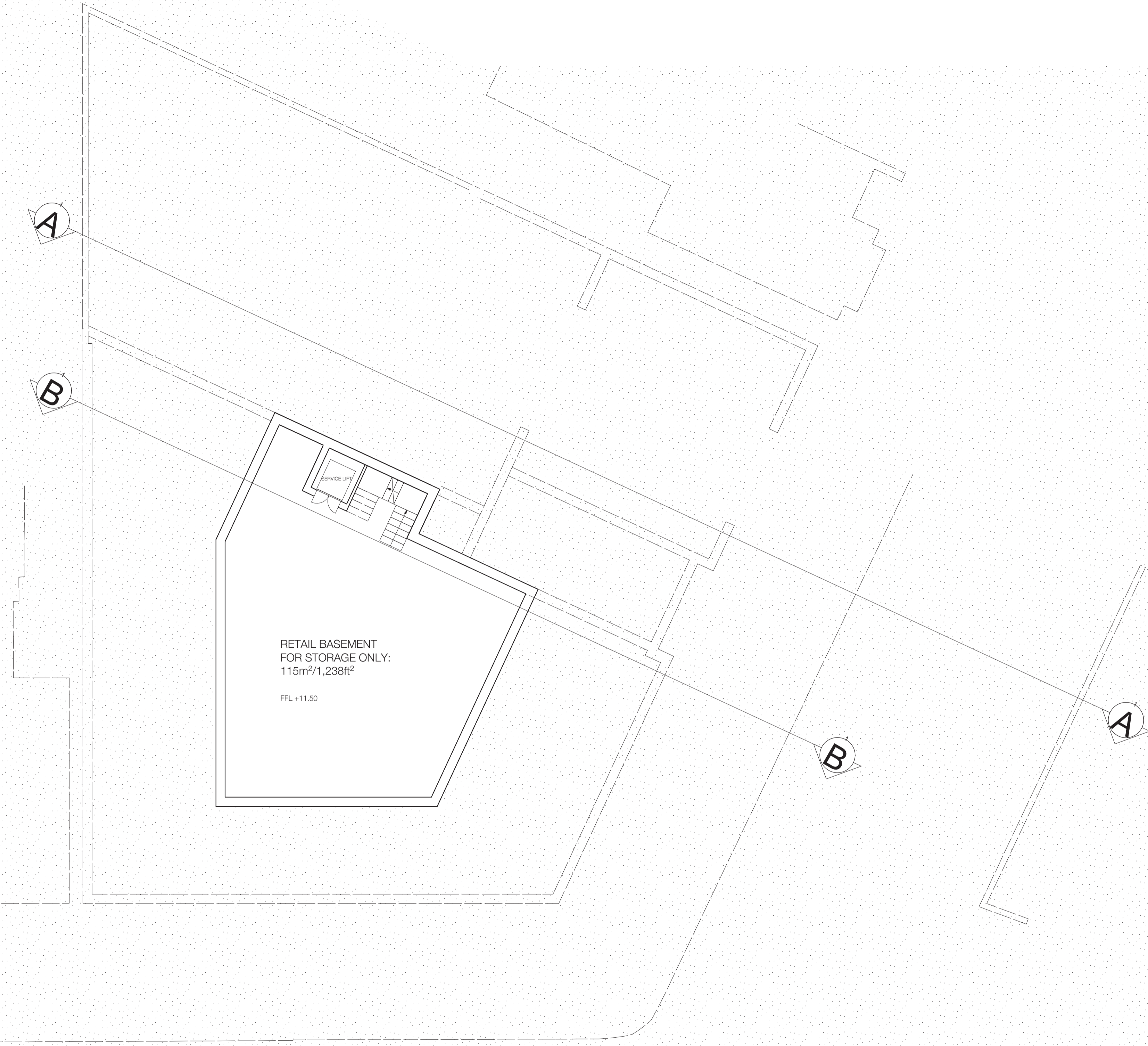
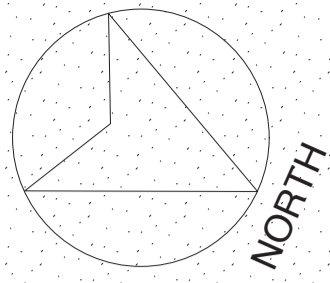
--	First Issue	15.08.14
A	Building plan updated Annotation added Proposed vehicular access added	04.09.14
B	Annotations added and amended following receipt of responses to planning submission public consultation	19.11.14

notes

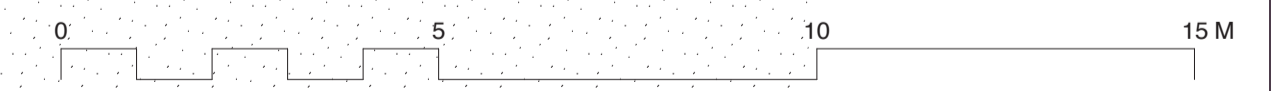
project	298 Haydon's Road, SW19
for	TLS Investments
title	Site Plan- Distances to Adjacent Properties
scale	1:500 & 1:1250 @ A3
drawing no.	2291_110B

Richards Partington Architects
 Unit G Reliance Wharf
 Hertford Road
 London N1 5EW
 T 020 7241 7770
 E post@rpaarchitects.co.uk
 W www.rpaarchitects.co.uk





Basement Floor Plan



- revisions
- Rev A : 01.08.14
- Revised Footprint, staircore & lift layout
 - Rev B : 15.08.14
- Revised Footprint, Scale bar and North arrow added
 - Rev C : 03.09.14
- Revised core layout
 - Rev D : 04.09.14
- Revised Data
 - Rev E : 10.09.14
- Revised context. Section lines added

notes

project **298 Haydon's Road, SW19**
 for **TLS Investments**
 title **Basement Plan**
 scale **1:200 @ A3 / 1:100 @ A1**
 drawing no. **2291_PL_099E**

Richards Partington Architects
 Unit G Reliance Wharf
 Hertford Road
 London N1 5EW
 T 020 7241 7770
 E post@rpaarchitects.co.uk
 W www.rpaarchitects.co.uk

