


West Elevation:

revisions
Rev: 12/20/14 Final Issue

notes

project	289 Haydon's Road, SW19
for	TLS Investments
title	West Elevation
scale	1:100 @ A3 / 1:50 @ A1
drawing no.	2291_PL_403

Richards Partington Architects  
 Unit G Reliance Wharf  
 Hertford Road  
 London N1 5EW  
 T 020 7241 7770  
 E post@rpaarchitects.co.uk  
 W www.rpaarchitects.co.uk





revisions	
Rev -:	08.09.14 First Issue
Rev A:	11.09.14 Minor Amendments

notes

project **298 Haydon's Road, SW19**  
 for **TLS Investments**  
 title **Elevation - Haydon Park Road**  
 scale **1:200 @ A3**  
 drawing no. **2291\_PL\_400A**

**Richards Partington Architects**  
 Unit G Reliance Wharf  
 Hertford Road  
 London N1 5EW  
 T 020 7241 7770  
 E post@rparchitects.co.uk  
 W www.rparchitects.co.uk





revisions
Rev - : 08.09.14 First Issue
Rev A : 11.09.14 Minor Context Amendments

notes

project **298 Haydon's Road, SW19**  
for **TLS Investments**  
title **Elevation - Haydon's Road**  
scale **1:200 @ A3**  
drawing no. **2291\_PL\_401A**

**Richards Partington Architects**  
Unit G Reliance Wharf  
Hertford Road  
London N1 5EW  
T 020 7241 7770  
E post@rparchitects.co.uk  
W www.rparchitects.co.uk





304 - 306 Haydon's Road

Outline of 304-306 Haydon's Road behind

Haydon Park Road

Undercroft Area

Car Park

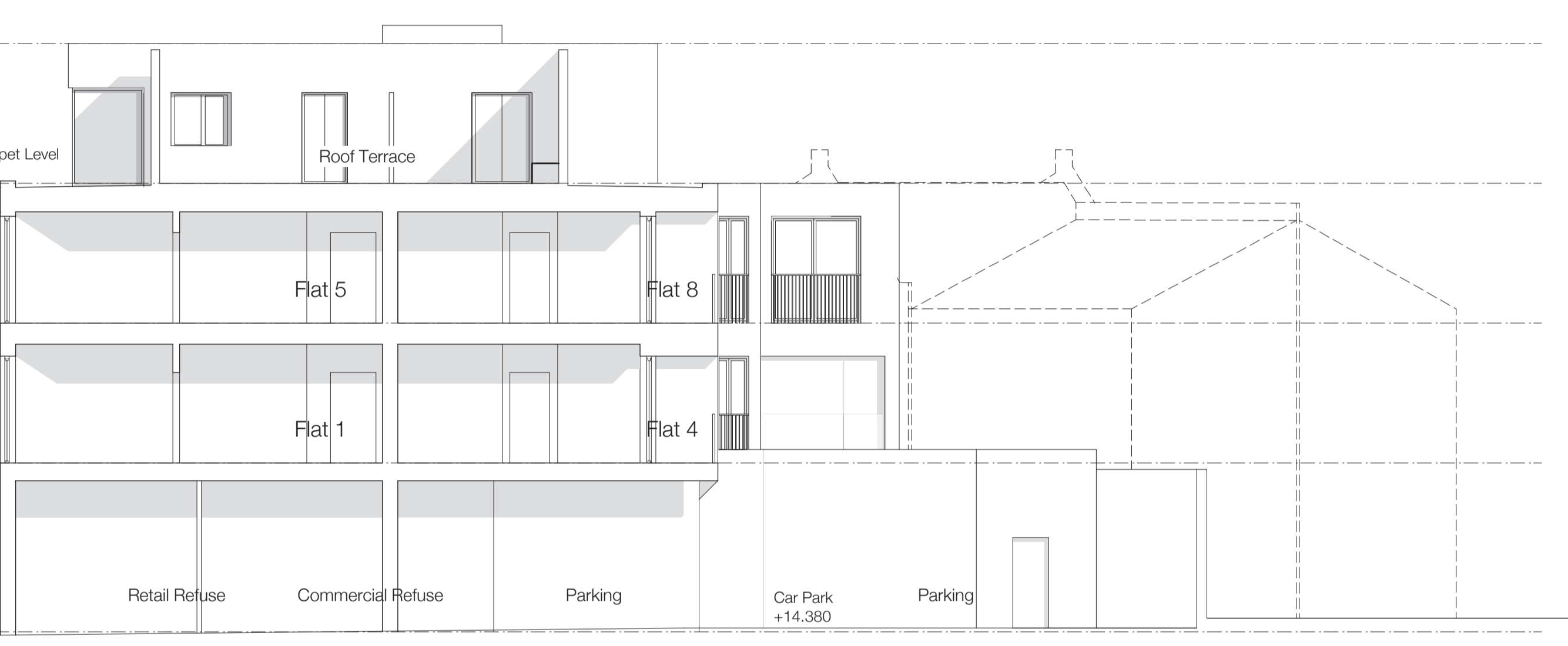
Boundary Wall 296 Haydon's Road

Section A-A:

24.5m

3150  
3075  
3075  
3800

Parapet Level +27.400  
FFL 3rd Floor +24.250  
FFL 2nd Floor +21.175  
FFL 1st Floor +18.100  
FFL Retail Ground Floor +14.300



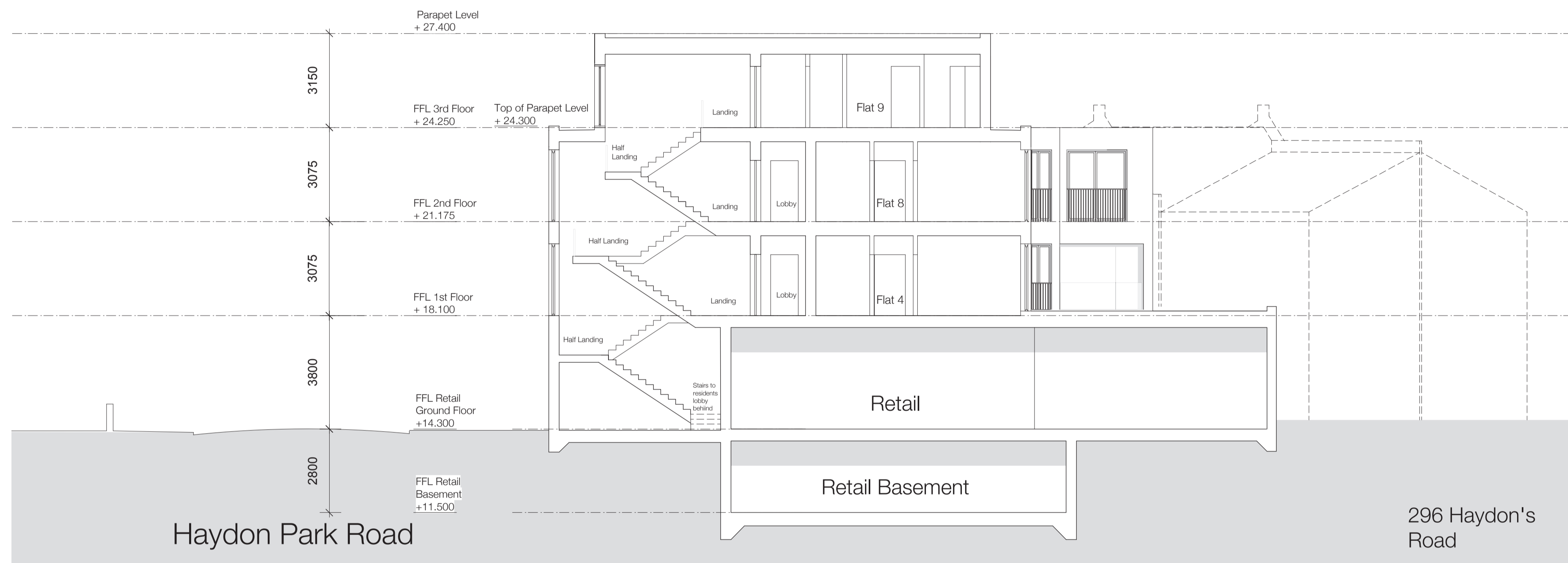
revisions
Rev -: 08.09.14 First Issue
Rev A: 11.09.14 Minor Updates

notes

project	<b>298 Haydon's Road, SW19</b>
for	<b>TLS Investments</b>
title	<b>Section AA</b>
scale	<b>1:200 @ A3 / 1:100 @ A1</b>
drawing no.	<b>2291_PL_500A</b>

Richards Partington Architects Unit G Reliance Wharf Hertford Road London N1 5EW T 020 7241 7770 E post@rparchitects.co.uk W www.rparchitects.co.uk	
---	---



Section B-B:  
Through Staircore



revisions  
 Rev -: 11.09.2014 First Issue

notes

project **298 Haydon's Road, SW19**  
 for **TLS Investments**  
 title **Section BB**  
 scale **1:200 @ A3 / 1:100 @ A1**  
 drawing no. **2291\_PL\_501**

Richards Partington Architects  
 Unit G Reliance Wharf  
 Hertford Road  
 London N1 5EW  
 T 020 7241 7770  
 E post@rpaarchitects.co.uk  
 W www.rpaarchitects.co.uk



This page is intentionally left blank