

Retail unit rear door to car park
Electric charging point with a metre space between two parking spaces

New private access from residential lobby to refuse / cycles / yard
Residential refuse & recycling storage
Residential bicycle storage Covered spaces for 10 bicycles
Retail refuse storage

Retail access to plant zone
New boundary wall (hatched)

Automatic roller shutter above
Sliding doors

RESIDENTIAL LOBBY
FFL 14.25

GROUND FLOOR RETAIL
290m² / 3,121ft²

FFL 14.30

ENTRANCE

Retail Cycle Stand Provision
2 No. Sheffield Stands
within curtilage of 298
Haydon's Road

EXISTING LOADING BAY EXTENDED

HAYDON'S ROAD

HAYDON PARK ROAD

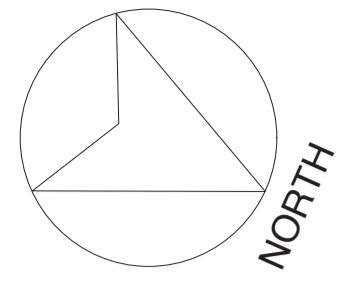
| revisions | | |
|-----------|--|------------|
| -- | First Issue | 15.07.2014 |
| A | Updated proposal for panning/refuse store | 24.07.2014 |
| B | Revised Parking Arrangement Revised Commercial Floor Plan | 24.07.2014 |
| C | Revised Parking Arrangement Revised Commercial Floor Plan Scale bar and North arrow added Electric Charging Point added | 15.08.2014 |
| D | Revised core layout Hatching added to boundary walls | 01.09.2014 |
| E | Vehicle Tracking Added Hatching to boundary walls amended Landscape context added | 03.09.2014 |
| F | Revised Data | 04.09.2014 |
| G | Vehicle Tracking Removed | 08.09.2014 |
| H | Entrance amended Section lines added | 10.09.2014 |

notes
Refuse and recycling provision based on preliminary advice from Merton Council

project **298 Haydon's Road, SW19**
 for **TLS Investments**
 title **Ground Floor Plan**
 scale **1:100 @ A1/1:200 @ A3**
 drawing no. **2291_PL_100H**

Richards Partington Architects
 Unit G Reliance Wharf
 Hertford Road
 London N1 5EW
 T 020 7241 7770
 E post@rparchitects.co.uk
 W www.rparchitects.co.uk





GIA:

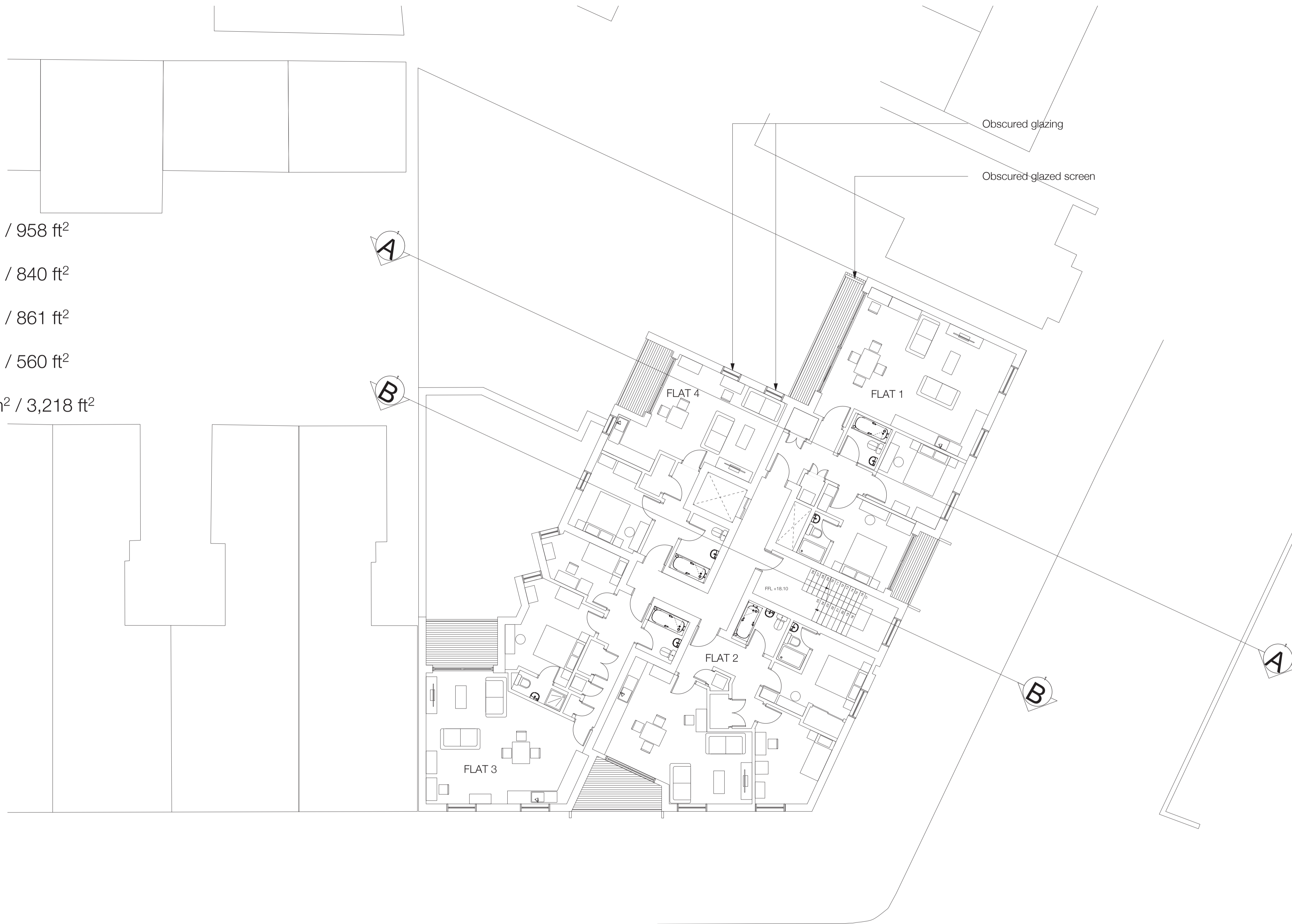
FLAT 1: 89m² / 958 ft²

FLAT 2: 78m² / 840 ft²

FLAT 3: 80m² / 861 ft²

FLAT 4: 52m² / 560 ft²

TOTAL: 299m² / 3,218 ft²



First Floor Plan



revisions

Rev B : 15.08.14
- Amendment to Flat 3 windows
Rev C : 15.08.14
- Scale bar and North arrow added

Rev D : XX.08.14
- Flat 2 layout amended to move living room door

Rev E : 03.09.14
- Amendments to meet lifetime homes requirements
- Removal of balcony from flat 1
- Obscured glazing annotations added

Rev F : 04.09.14
- Revised Data

Rev G : 05.09.14
- Minor Amendments

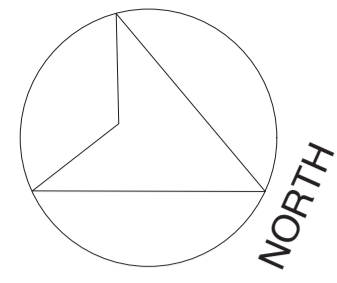
Rev H : 10.09.14
- Minor Amendments. Section lines added

notes

project **289 Haydon's Road, SW19**
for **TLS Investments**
site **First Floor Plan: Option 2**
scale **1:200 @ A3 / 1:100 @ A1**
drawing no. **2291_PL_101H**

Richards Partington Architects
Unit G Reliance Wharf
Hertford Road
London N1 5EW
T 020 7241 7770
E post@rparchitects.co.uk
W www.rparchitects.co.uk





GIA:

FLAT 5: 84m² / 904 ft²

FLAT 6: 78m² / 840ft²

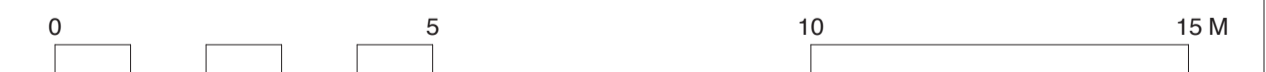
FLAT 7: 79m² / 850 ft²

FLAT 8: 52m² / 560 ft²

TOTAL: 293m² / 3,154 ft²



Second Floor Plan



revisions

Rev B : 15.08.14
 - Amendment to Flat 7 windows

Rev C : 15.08.14
 - Scale bar and North arrow added

Rev D : XX.08.14
 - Flat 2 layout amended to move living room door

Rev E : 03.09.14
 - Amendments to meet lifetime homes requirements
 - Amendments to balcony fronts to be glazed
 - Obscured glazing annotation added

Rev F : 04.09.14
 - Revised Data

Rev G : 05.09.14
 - Minor Amendments

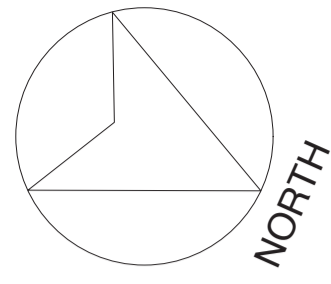
Rev H : 10.09.14
 - Minor Amendments. Section lines added

notes

project **298 Haydon's Road, SW19**
 for **TLS Investments**
 site **Second Floor Plan**
 scale **1:200 @ A3 / 1:100 @ A1**
 drawing no. **2291_PL_102H**

Richards Partington Architects
 Unit G Reliance Wharf
 Hertford Road
 London N1 5EW
 T 020 7241 7770
 E post@rparchitects.co.uk
 W www.rparchitects.co.uk





FLAT 9: 98 m² / 1,055 ft²



Third Floor Plan



revisions

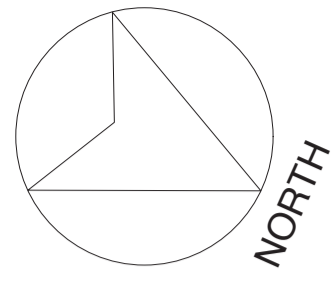
- Rev A issued: 09.05.14
- Revised staircase & flat layout
- Rev B issued: 15.08.14
- Scale bar and North arrow added
- Rev C issued: 15.08.14
- Layout amended- Reduction in GIA
- Rev D issued: 03.09.14
- Layout amended to original GIA layout
- Plan amended to comply with lifetime homes
- Rev E : 04.09.14
- Revised Data
- Rev F : 05.09.14
- Minor Context Amendments
- Rev G : 10.09.14
- Minor Amendments. Section lines added

notes

project **298 Haydon's Road, SW19**
 for **TLS Investments**
 title **Third Floor Plan**
 scale **1:200 @ A3 / 1:100 @ A1**
 drawing no. **2291_PL_103G**

Richards Partington Architects
 Unit G Reliance Wharf
 Hertford Road
 London N1 5EW
 T 020 7241 7770
 E post@rpaarchitects.co.uk
 W www.rpaarchitects.co.uk





Roof Plan



revisions
 Rev - issued: 14.05.14
 First Issue

notes

project **298 Haydon's Road, SW19**
 for **TLS Investments**
 title **Roof Plan**
 scale **1:200 @ A3 / 1:100 @ A1**
 drawing no. **2291_PL_104**

Richards Partington Architects
 Unit G Reliance Wharf
 Hertford Road
 London N1 5EW
 T 020 7241 7770
 E post@rpaarchitects.co.uk
 W www.rpaarchitects.co.uk





South Elevation:
Rear of Building

revisions

Rev. A 11/03/14 Revised Content

notes

project **289 Haydon's Road, SW19**
 for **TLS Investments**
 title **South Elevation**
 scale **1:100 @ A3 / 1:50 @ A1**
 drawing no. **2291_PL_402A**

Richards Partington Architects
 Unit G Reliance Wharf
 Hertford Road
 London N1 5EW
 T 020 7241 7770
 E post@rpaarchitects.co.uk
 W www.rpaarchitects.co.uk

