



© Crown copyright and database rights 2014. Ordnance Survey. 100019259.

This map is based on Ordnance Survey material with the permission of Ordnance Survey on behalf of HMSO. Unauthorised reproduction infringes Crown Copyright and may lead to prosecution or Civil proceedings. London Borough of Merton 100019259. 2012.

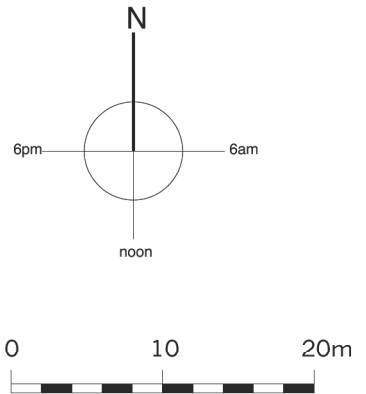
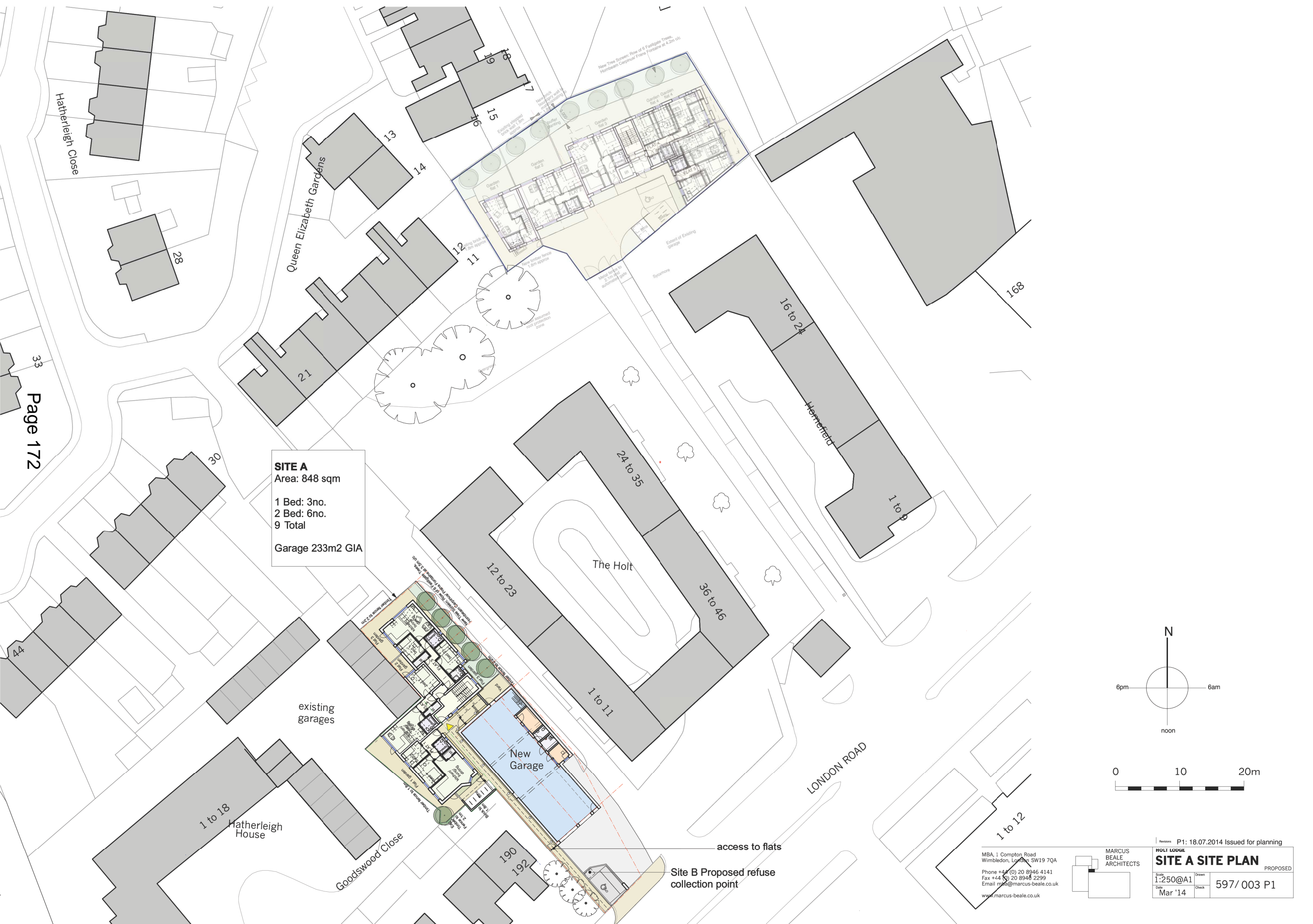
Holt Lodge
London Road

Scale 1/1272
Date 30/9/2014

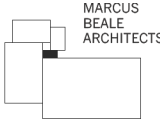
London Borough of Merton
100 London Road
Morden
Surrey
SM4 5DX



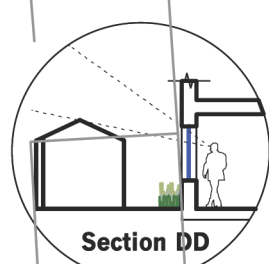
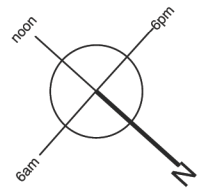
SITE A
 Area: 848 sqm
 1 Bed: 3no.
 2 Bed: 6no.
 9 Total
 Garage 233m2 GIA



MBA, 1 Compton Road
 Wimbledon, London SW19 7QA
 Phone +44 (0) 20 8946 4141
 Fax +44 (0) 20 8948 2299
 Email mbs@marcus-beale.co.uk
www.marcus-beale.co.uk



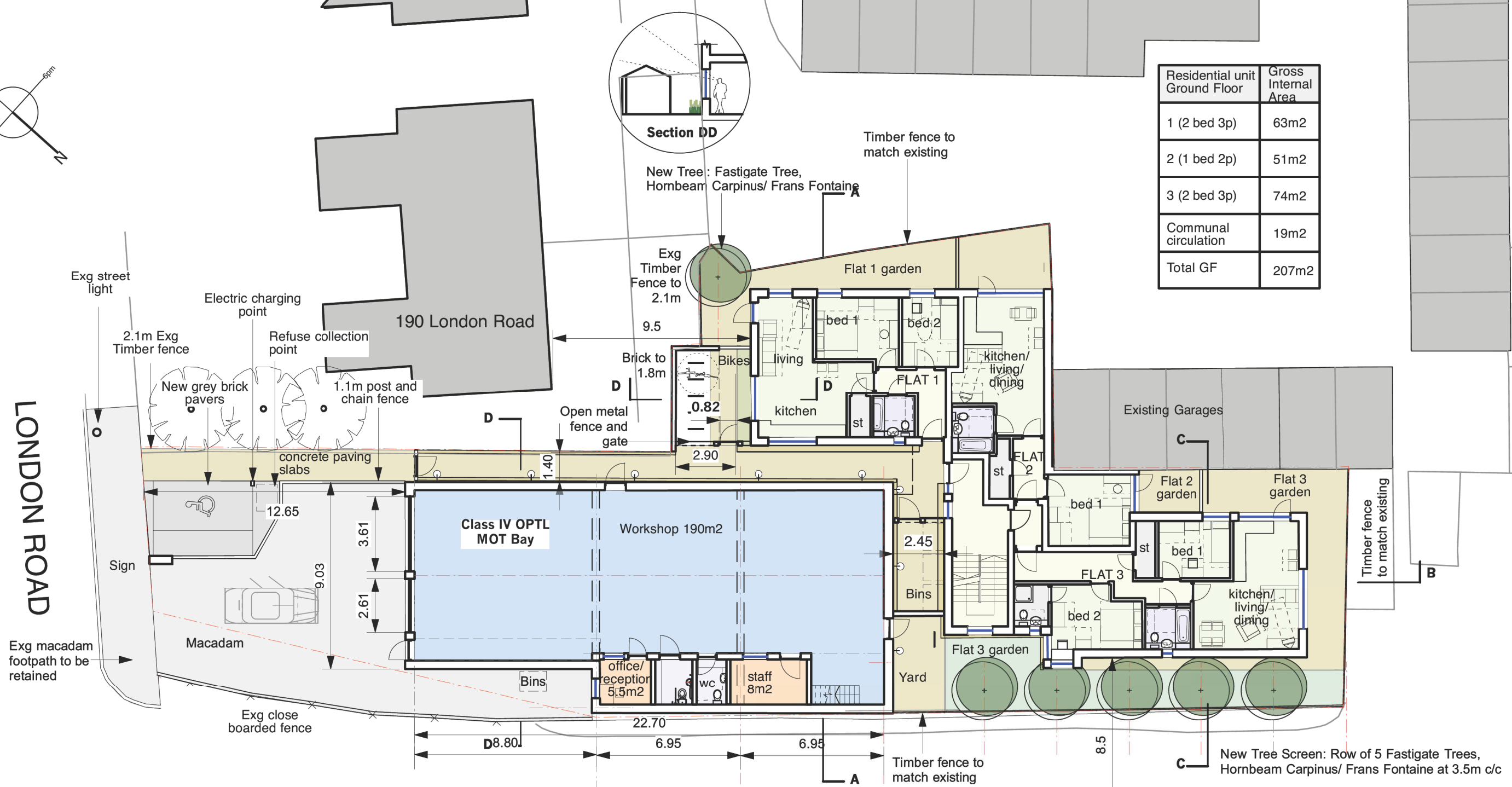
Revisions P1: 18.07.2014 Issued for planning	
HOLT LODGE	
SITE A SITE PLAN	
PROPOSED	
Scale 1:250@A1	Drawn
Date Mar '14	Check 597/003 P1



Residential unit Ground Floor	Gross Internal Area
1 (2 bed 3p)	63m ²
2 (1 bed 2p)	51m ²
3 (2 bed 3p)	74m ²
Communal circulation	19m ²
Total GF	207m²

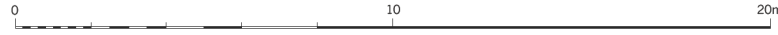
LONDON ROAD

Page 173



KEY

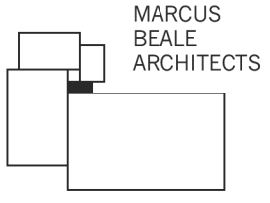
	CIRCULATION
	LIVING ROOMS ETC
	BATHROOMS
	STORE



P2: 24.10.2014 Issued to planning. Bay to the apartments facing the Holt added in accordance with Case Officer's suggestion. Section DD added showing relationship between Flat 1 and the bike shed.

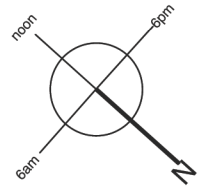
Revisions P1: 18.07.2014 Issued for planning

MBA, 1 Compton Road
Wimbledon, London SW19 7QA
Phone +44 (0) 20 8946 4141
Fax +44 (0) 20 8946 2299
Email mba@marcus-beale.co.uk
www.marcus-beale.co.uk

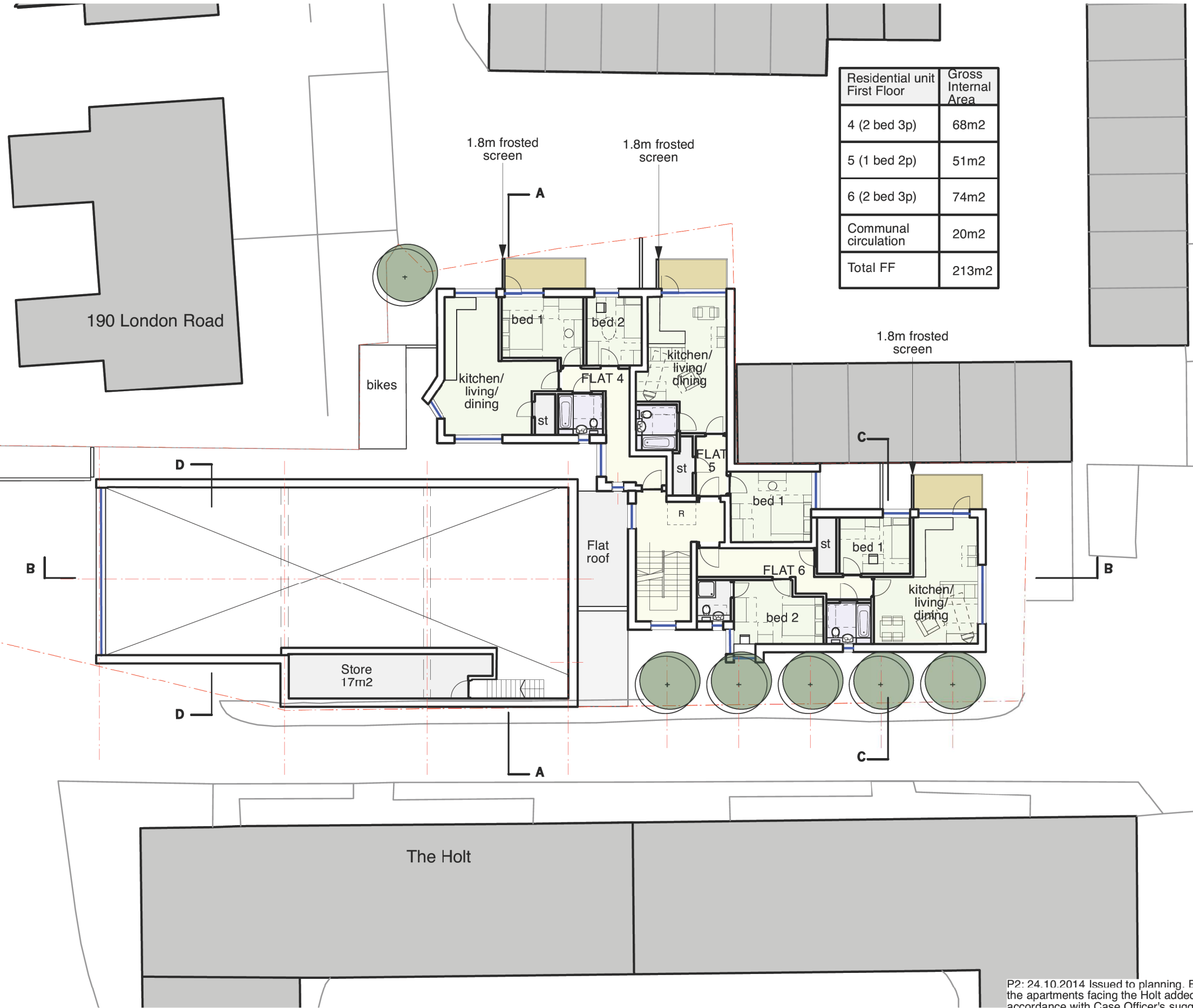


HOLT LODGE
SITE A GROUND FLOOR PLAN
PROPOSED

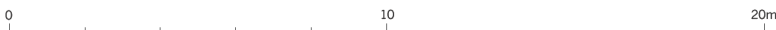
Scale 1:200@A3	Drawn KP	597/010 P2
Date 01/03/2013	Check HS	



LONDON ROAD



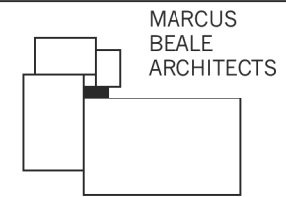
Residential unit First Floor	Gross Internal Area
4 (2 bed 3p)	68m ²
5 (1 bed 2p)	51m ²
6 (2 bed 3p)	74m ²
Communal circulation	20m ²
Total FF	213m²



P2: 24.10.2014 Issued to planning. Bay to the apartments facing the Holt added in accordance with Case Officer's suggestion.

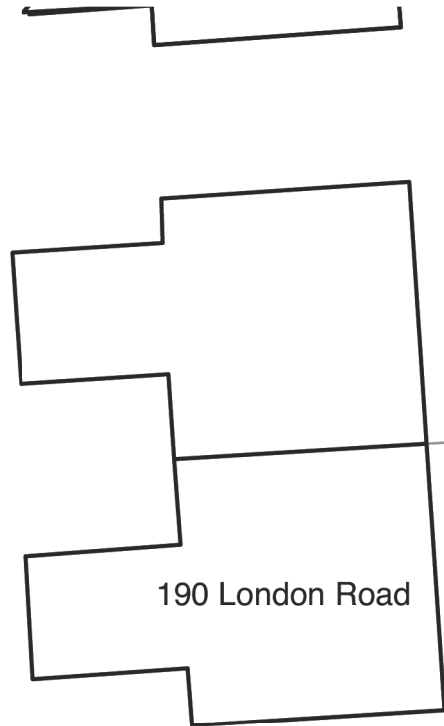
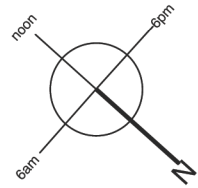
Revisions P1: 18.07.2014 Issued for planning

MBA, 1 Compton Road
Wimbledon, London SW19 7QA
Phone +44 (0) 20 8946 4141
Fax +44 (0) 20 8946 2299
Email mba@marcus-beale.co.uk
www.marcus-beale.co.uk



MARCUS
BEALE
ARCHITECTS

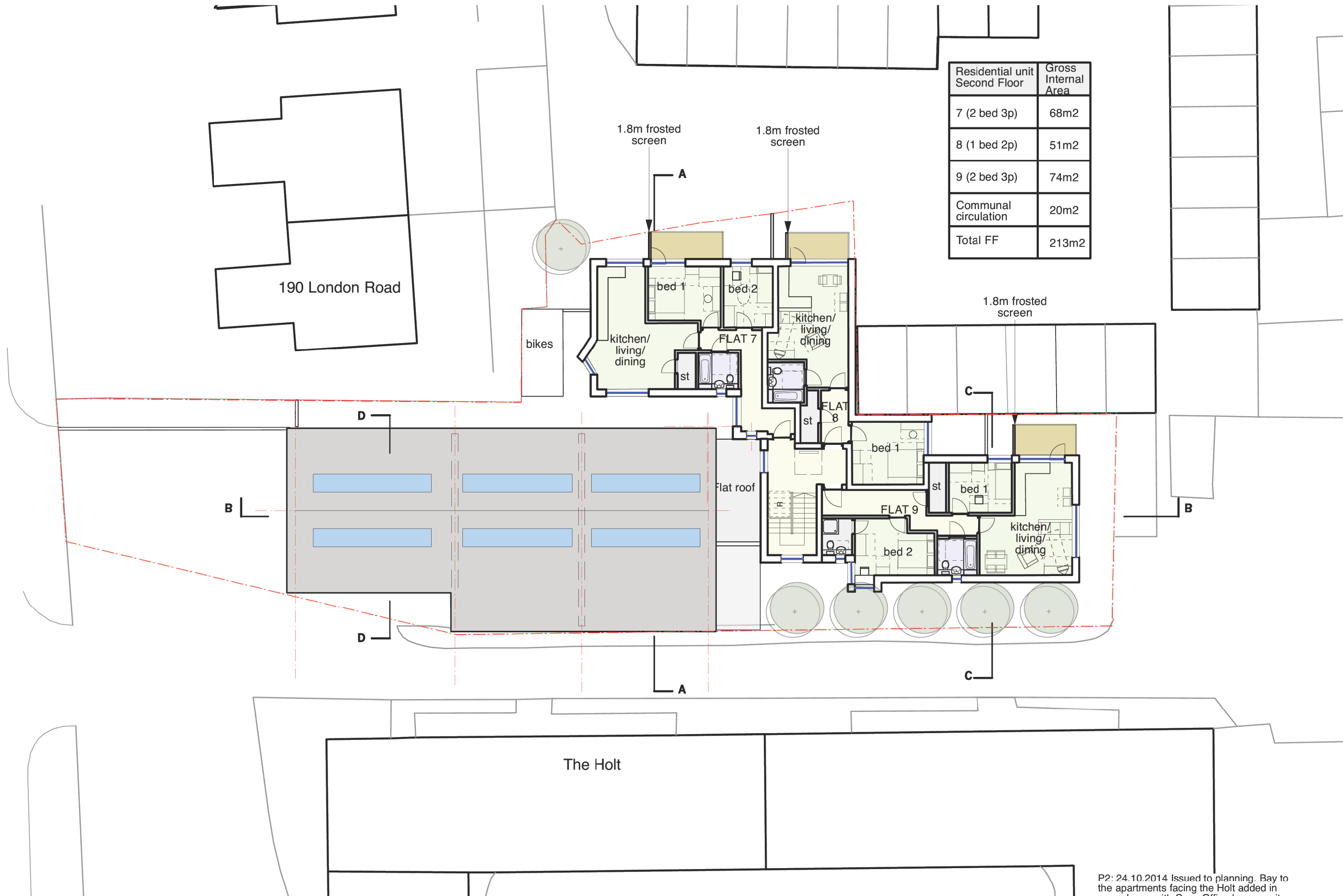
HOLT LODGE		SITE A FIRST FLOOR PLAN PROPOSED
Scale 1:200@A3	Drawn KP	
Date 01/03/2013	Check HS	597/011 P2



190 London Road

LONDON ROAD

Residential unit Second Floor	Gross Internal Area
7 (2 bed 3p)	68m ²
8 (1 bed 2p)	51m ²
9 (2 bed 3p)	74m ²
Communal circulation	20m ²
Total FF	213m²



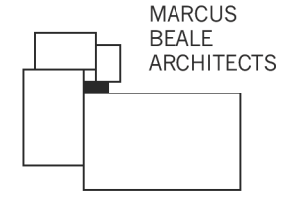
P2: 24.10.2014 Issued to planning. Bay to the apartments facing the Holt added in accordance with Case Officer's suggestion.

Revisions P1: 18.07.2014 Issued for planning

MBA, 1 Compton Road
Wimbledon, London SW19 7QA

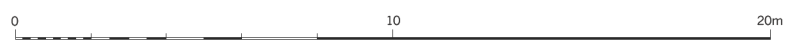
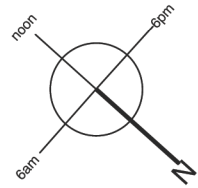
Phone +44 (0) 20 8946 4141
Fax +44 (0) 20 8946 2299
Email mba@marcus-beale.co.uk

www.marcus-beale.co.uk

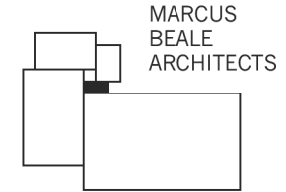


MARCUS
BEALE
ARCHITECTS

HOLT LODGE			
SITE A SECOND FLOOR PLAN			
PROPOSED			
Scale 1:200@A3	Drawn KP	597/012 P2	
Date 01/03/2013	Check HS		



MBA, 1 Compton Road
Wimbledon, London SW19 7QA
Phone +44 (0) 20 8946 4141
Fax +44 (0) 20 8946 2299
Email mba@marcus-beale.co.uk
www.marcus-beale.co.uk



MARCUS
BEALE
ARCHITECTS

Revisions P1: 18.07.2014 Issued for planning

NORTHOLT WORKS SITE		PROPOSED
SITE A ROOF		
Scale 1:200@A3	Drawn KP	597/013 P1
Date 01/03/2013	Check	