

This map is based on Ordnance Survey material with the permission of Ordnance Survey on behalf of HMSO. Unauthorised reproduction infringes Crown Copyright and may lead to prosecution or Civil proceedings. London Borough of Merton 100019259. 2012.

3

Wilberforce Way

Scale 1/1250

Date 30/9/2014

London Borough of Merton
 100 London Road
 Morden
 Surrey
 SM4 5DX



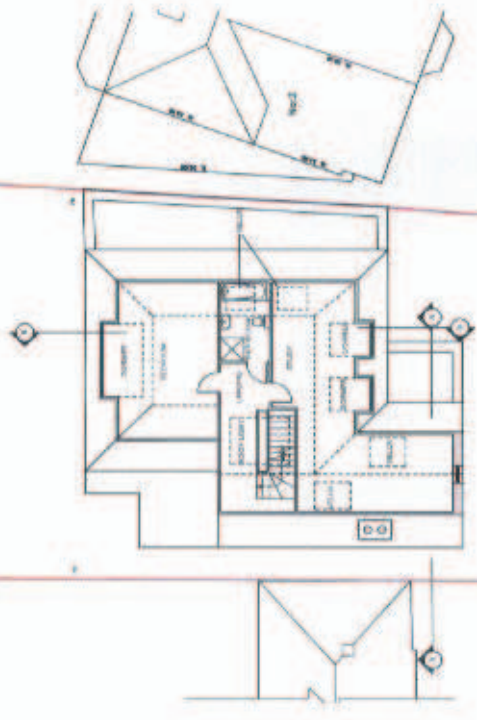
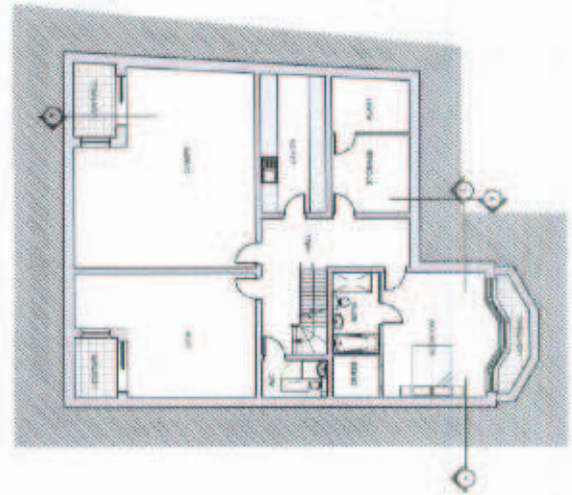
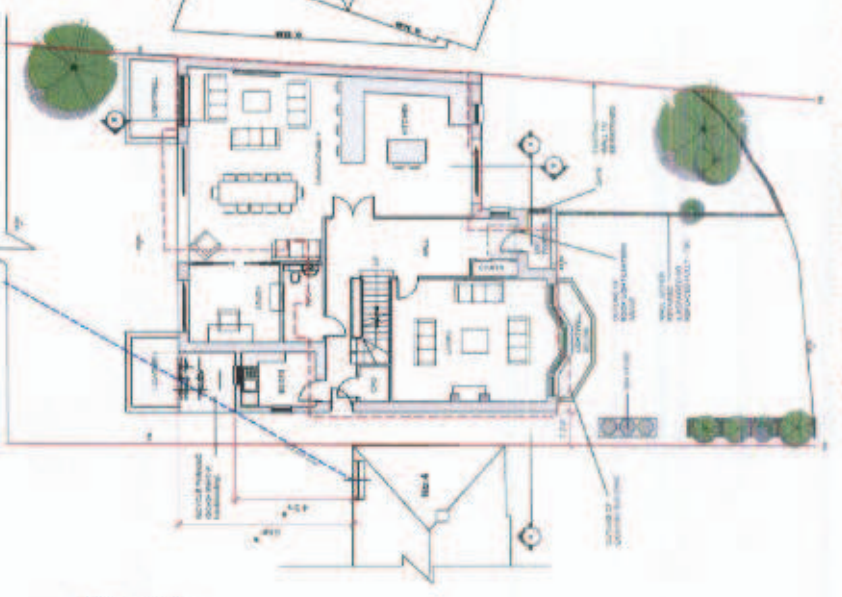
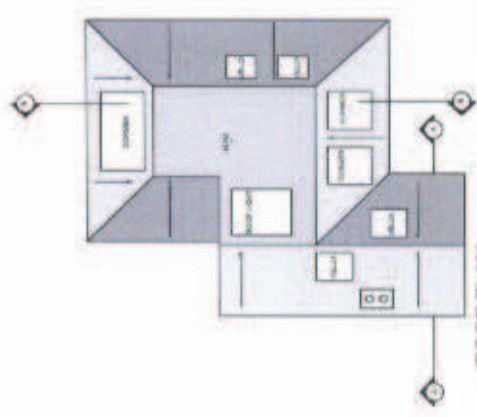
DEVELOPMENT CONTROL

4. THESE PLANS SHALL BE USED ONLY FOR THE PROJECT DESCRIBED HEREIN. ANY OTHER USE IS UNAUTHORIZED. THE ARCHITECT ASSUMES NO LIABILITY FOR ANY DAMAGE TO PERSONS OR PROPERTY ARISING FROM THE USE OF THESE PLANS.

SPECIAL NOTES:
 1. ALL WORK SHALL BE IN ACCORDANCE WITH THE 2015 IBC.

PROPOSED SECOND FLOOR PLAN (GIA=182 SQM)	
NO.	DESCRIPTION
1	REVISION
2	REVISION
3	REVISION
4	REVISION
5	REVISION
6	REVISION
7	REVISION
8	REVISION
9	REVISION
10	REVISION
11	REVISION
12	REVISION
13	REVISION
14	REVISION
15	REVISION
16	REVISION
17	REVISION
18	REVISION
19	REVISION
20	REVISION

Holden Harper
 ARCHITECTS
 1000 WEST 10TH AVENUE
 SUITE 1000
 DENVER, CO 80202
 TEL: 303.733.1111
 WWW.HOLDENHARPER.COM

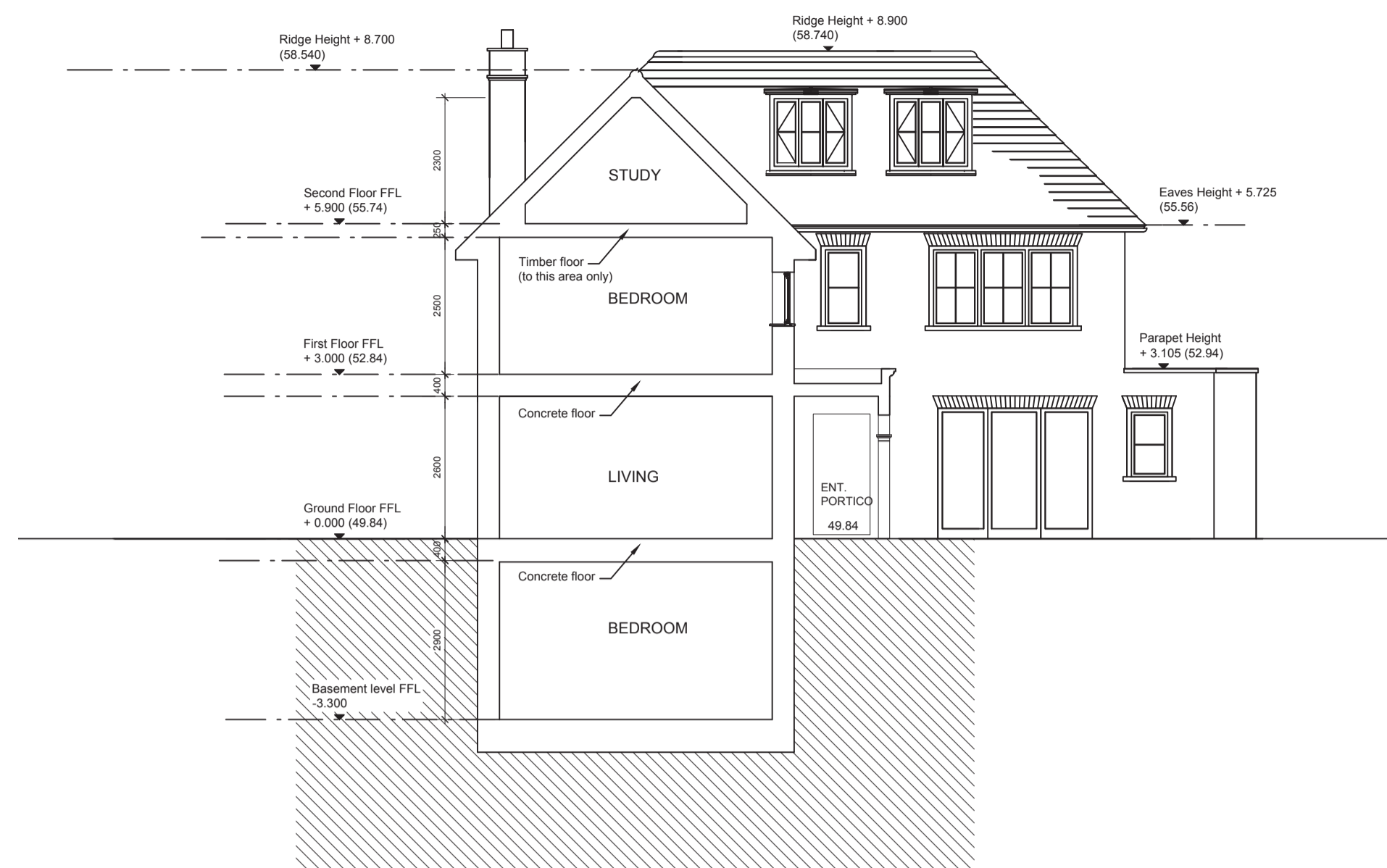


PROPOSED BASEMENT (GIA=171 SQM)

PROPOSED GROUND FLOOR PLAN (GIA=157 SQM)

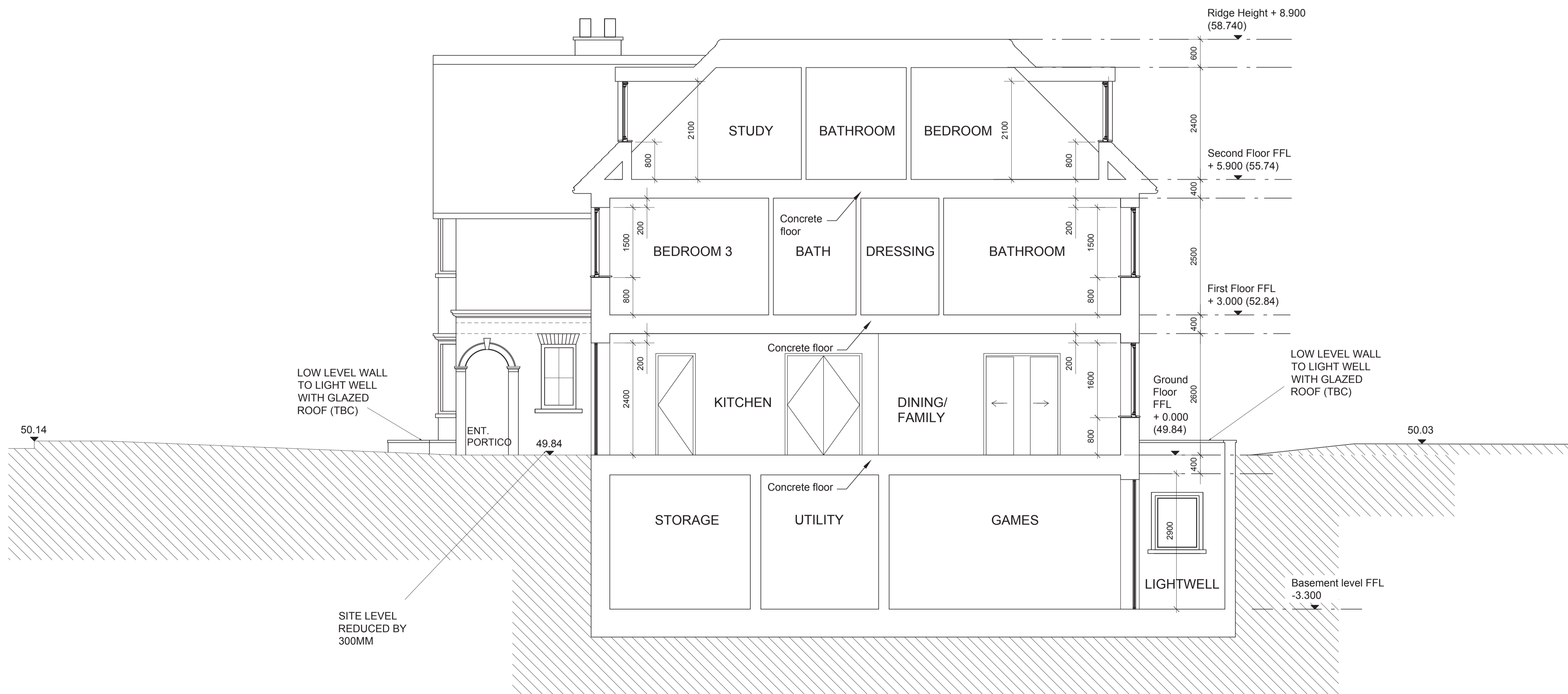
PROPOSED FIRST FLOOR PLAN (GIA=120 SQM)

PROPOSED SECOND FLOOR PLAN (GIA=182 SQM)



SECTION A-A
SCALE 1:100

REFER TO DRAWING
588-P02 FOR LOCATION
OF SECTIONS



SECTION B-B
SCALE 1:50

Rev	Date	Revisions	By
A	29.09.14	Building depth amended	RG

JOB: 3 Wilberforce Way
SW19 4TH

DWG: PROPOSED
SECTIONS

JOB NO: 588

DWG. NO: 588-P04

REVISION:

SCALE: 1:50 and 1:100 @ A1

DATE: 30/04/2014

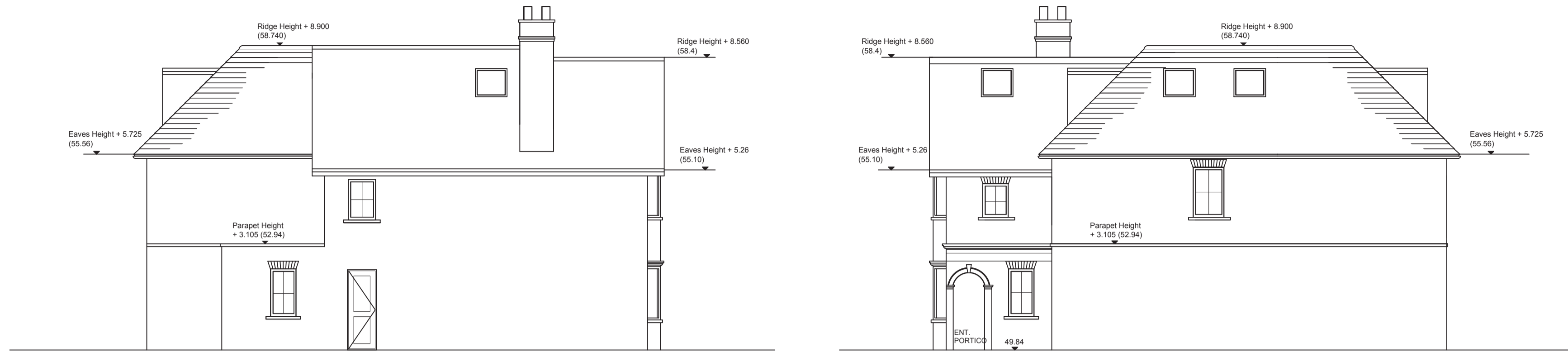
DRAWN BY: MC

CHECKED BY: HH

DWG. STATUS: PLANNING

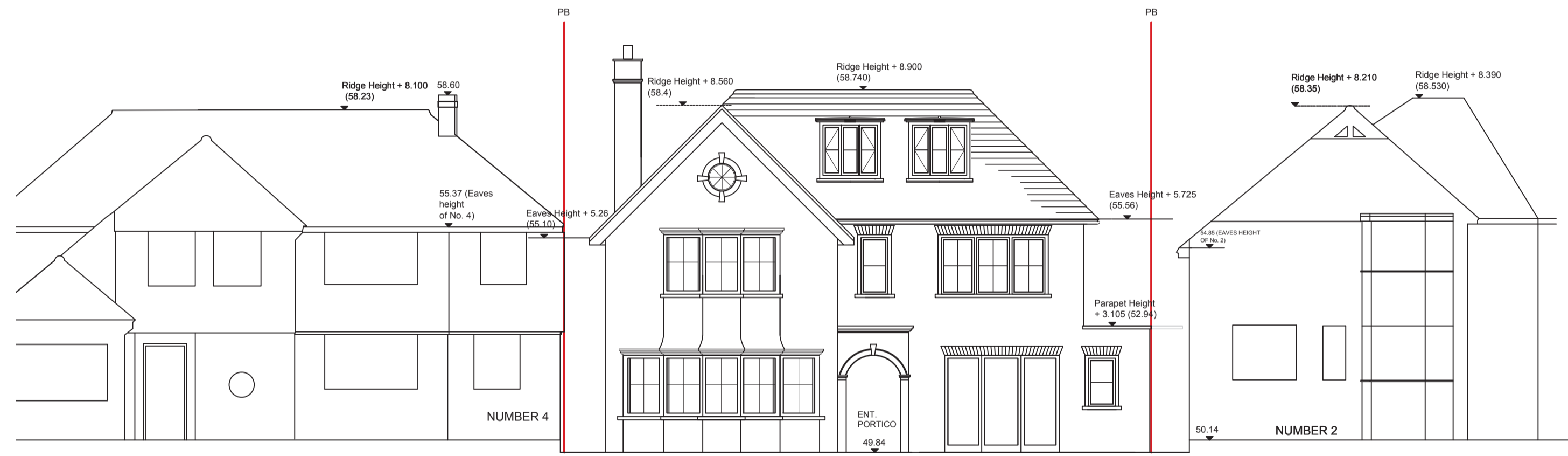
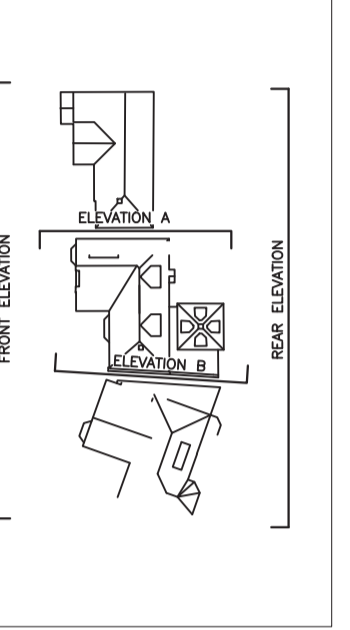
Do not scale this drawing
All dimensions to be checked on site
Holden Harper copyright reserved

Holden Harper
chartered
architects & engineers
26 High Street, Wimbledon
London, SW19 5BY
Telephone: 020 8946 5502
Email: arch@holdenharper.co.uk

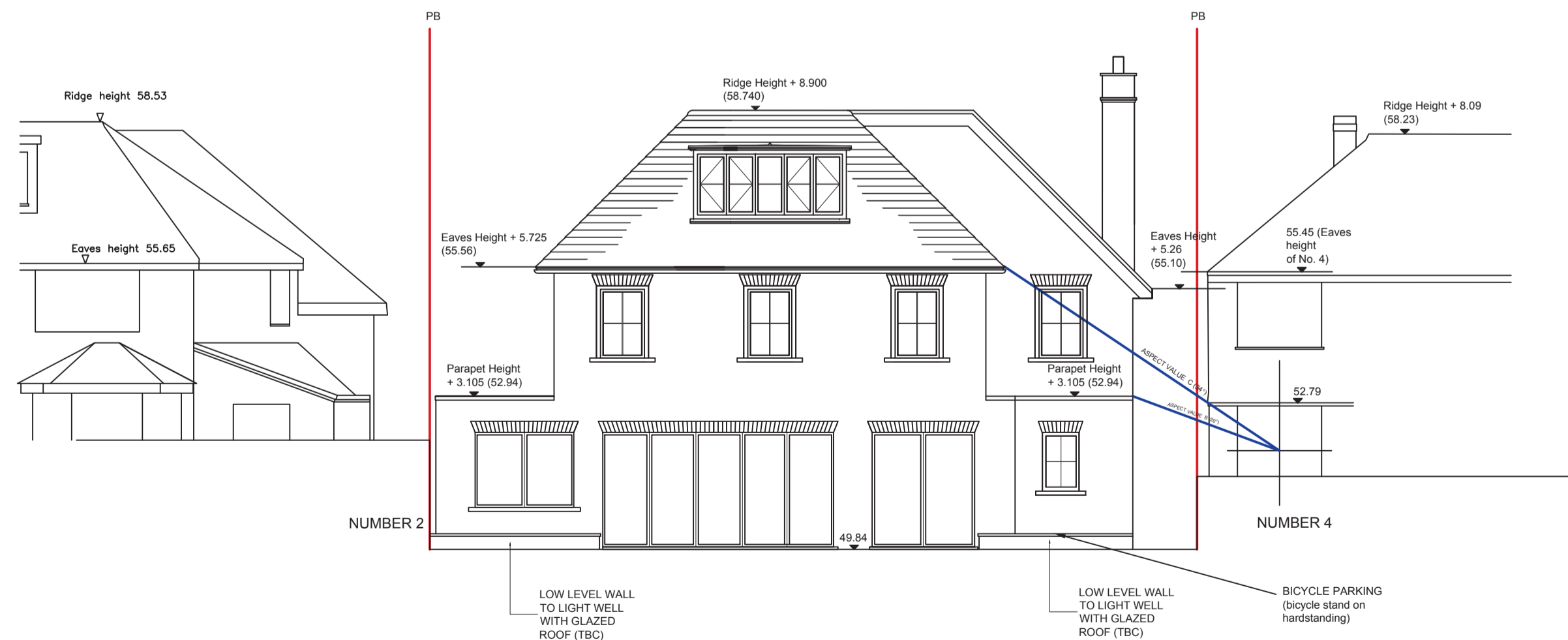


ELEVATION A
PROPOSED SIDE ELEVATIONS

ELEVATION B



PROPOSED FRONT ELEVATION



PROPOSED REAR ELEVATION

UNUSUAL RISKS IDENTIFIED IN CDM RISK ASSESSMENT:

Rev	Date	Revisions	By
B	29.09.14	Building depth amended	RG
A	22.07.14	General updates as advised by L.A.	MC

JOB: 3 Wilberforce Way SW19 4TH

DWG: PROPOSED ELEVATIONS

JOB NO: 588

DWG. NO: 588-P03

REVISION: A

SCALE: 1:100 @ A1

DATE: 30/04/2014

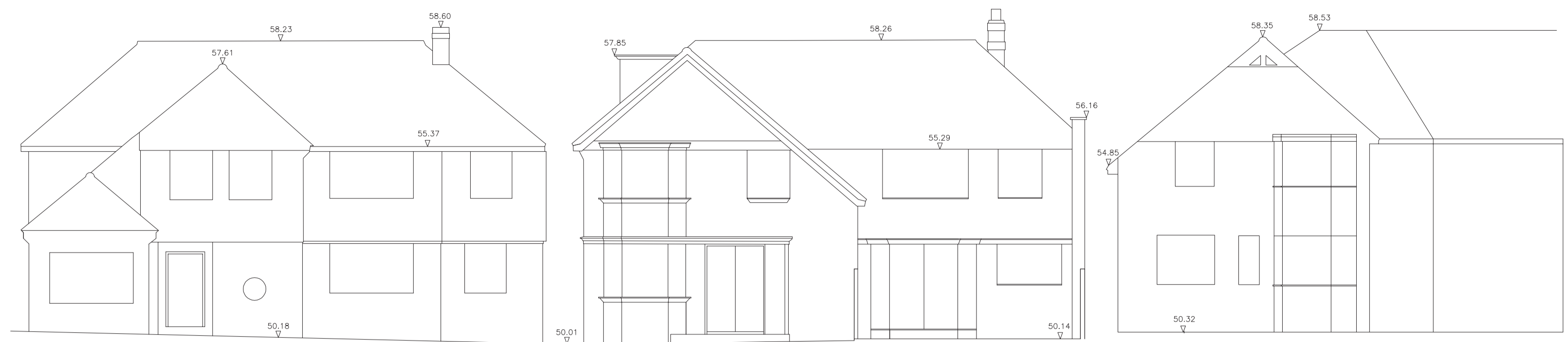
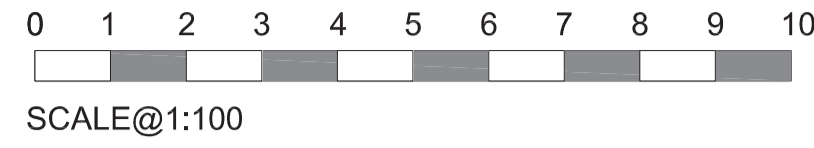
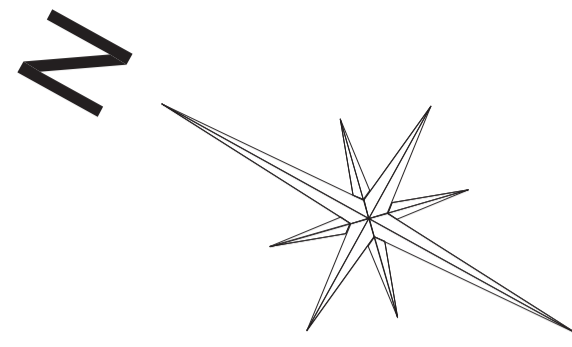
DRAWN BY: MC

CHECKED BY: HH

DWG. STATUS: PLANNING

Do not scale this drawing
All dimensions to be checked on site
Holden Harper copyright reserved

Holden Harper
 chartered
 architects & engineers
 26 High Street, Wimbledon
 London, SW19 5BY
 Telephone: 020 8946 5502
 Email: arch@holdenharper.co.uk



NUMBER 4

NUMBER 3

NUMBER 2

EXISTING FRONT ELEVATION

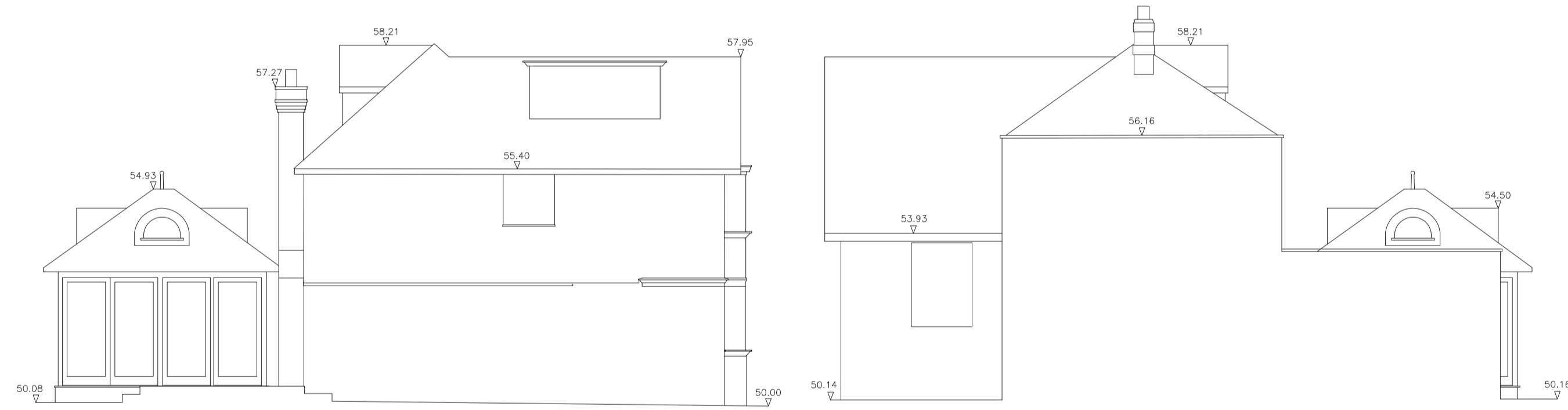


NUMBER 2
NO ACCESS DUE TO BOUNDARY

NUMBER 3

NUMBER 4
NO ACCESS DUE TO BOUNDARY

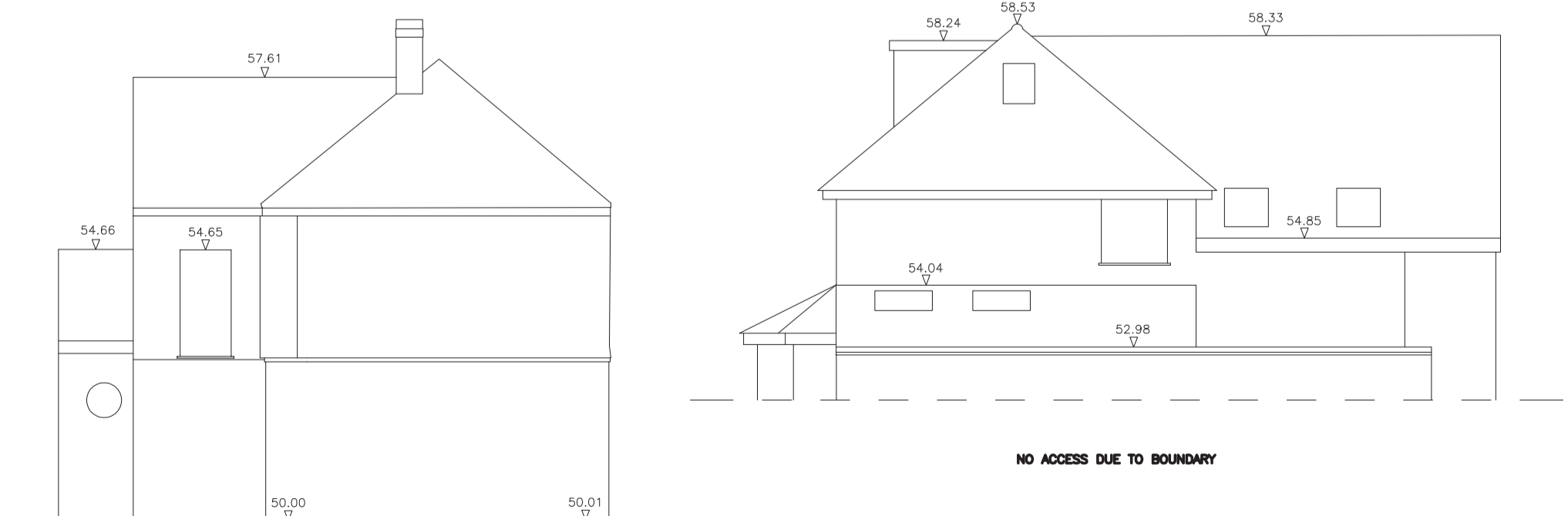
EXISTING REAR ELEVATION



ELEVATION A

ELEVATION B

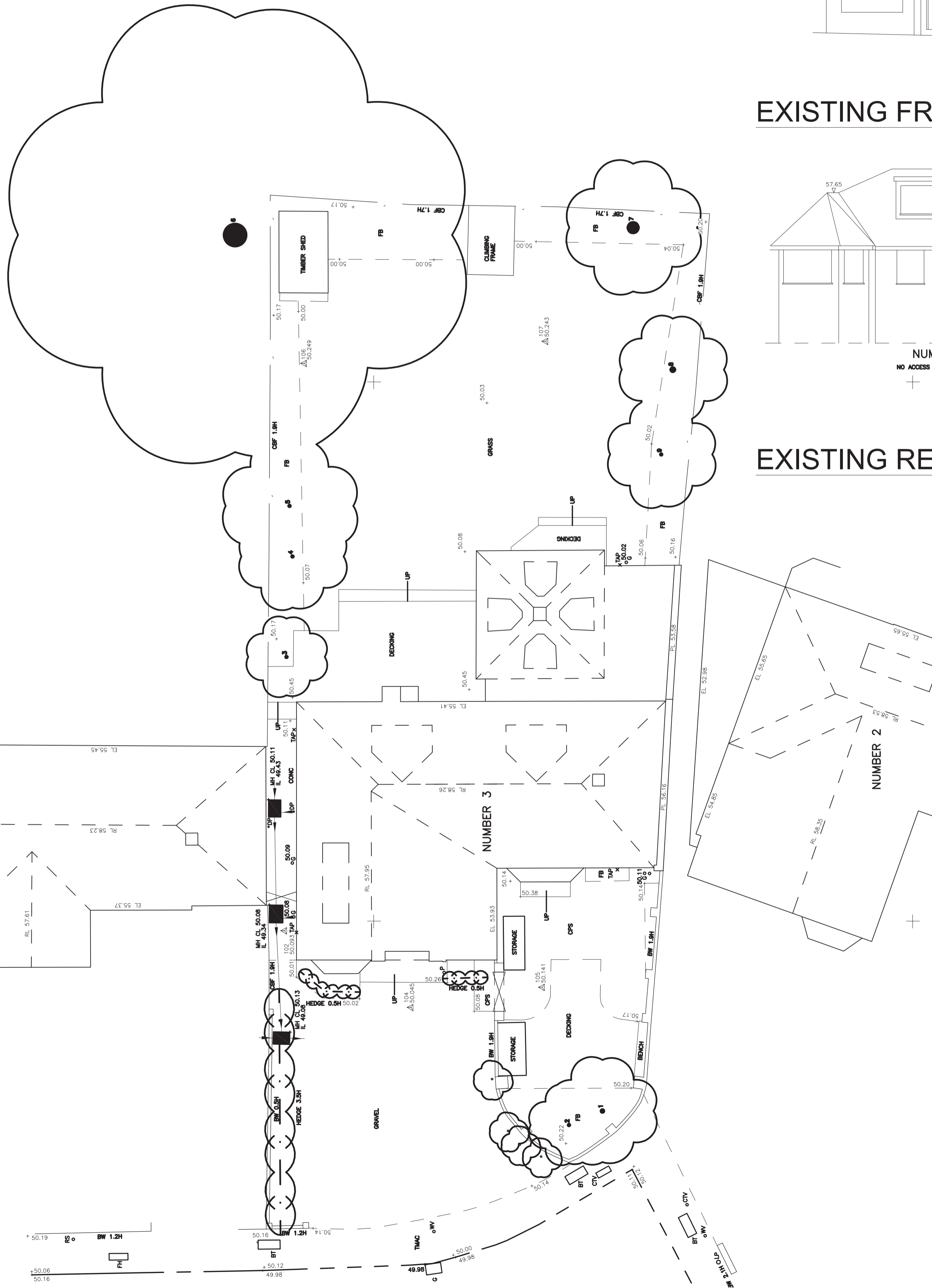
EXISTING SIDE ELEVATIONS



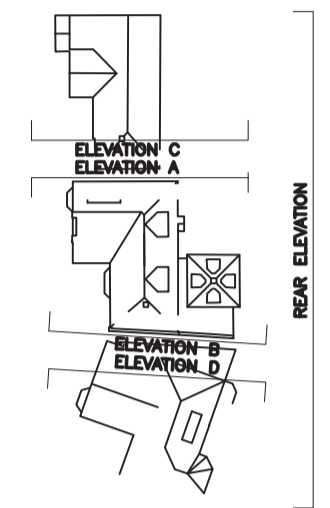
ELEVATION C

ELEVATION D

EXISTING SIDE ELEVATIONS



EXISTING PLAN

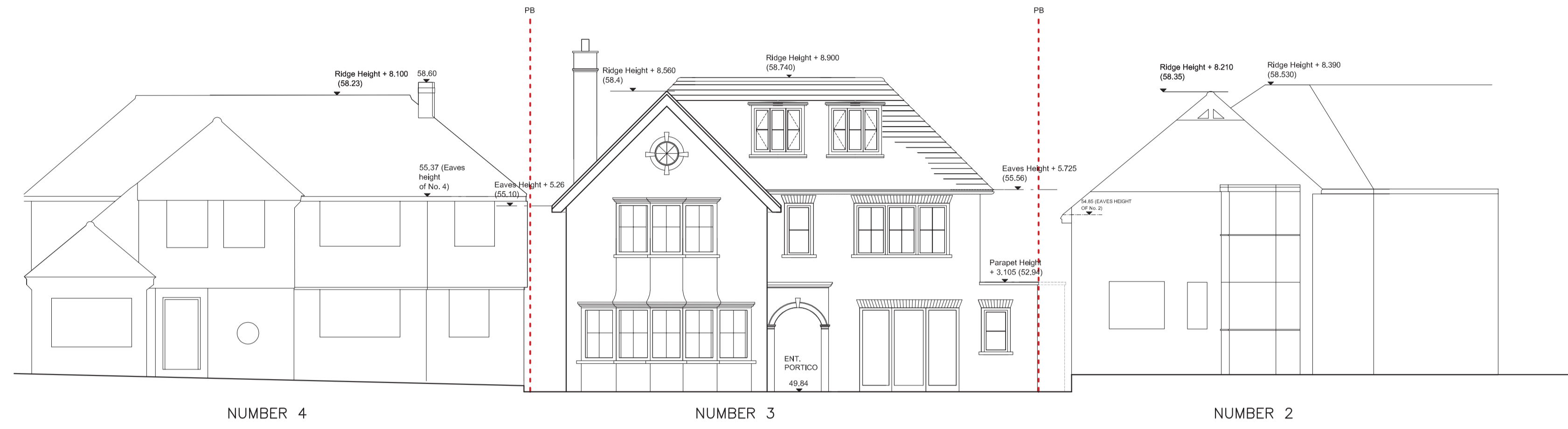


Rev	Date	Revisions	By

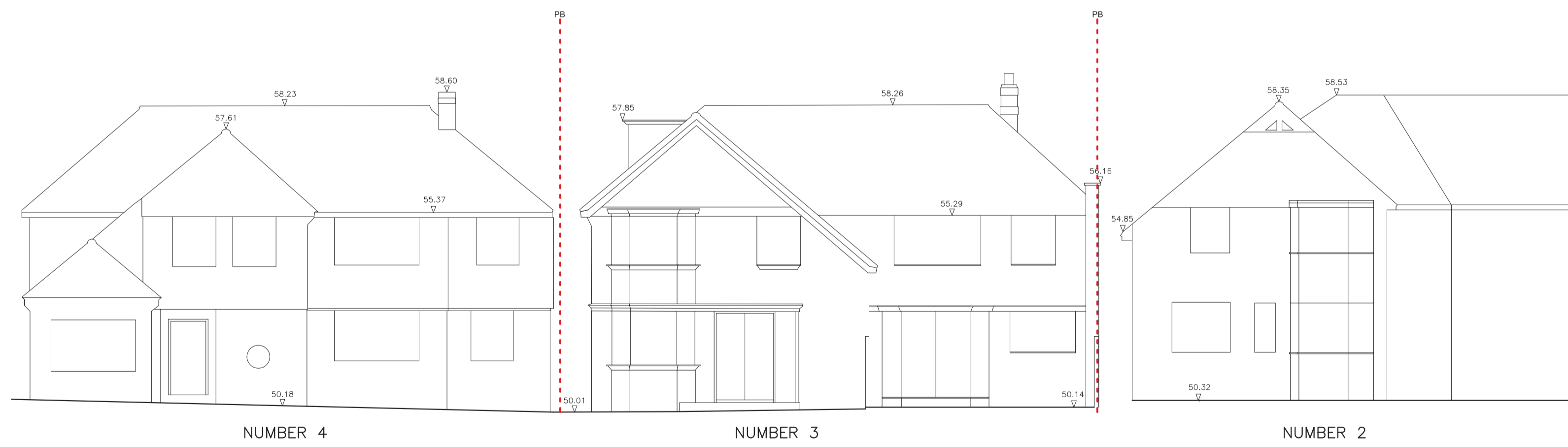
JOB: 3 Wilberforce Way SW19
 DWG: EXISTING PLANS / ELEVATIONS
 JOB NO: 588
 DWG NO: P00
 REVISION:
 SCALE: 1:100 @ A1
 DATE: 30/04/2014
 DRAWN BY: MC
 CHECKED BY: RF
 DWG STATUS: PLANNING

Do not scale this drawing
 All dimensions to be checked on site
 Holden Harper copyright reserved

Holden Harper
 chartered architects & engineers
 26 High Street, Wimbledon London, SW19 5BY
 Telephone: 020 8946 5502
 Email: arch@holdenharper.co.uk



PROPOSED STREETSCAPE



EXISTING STREETSCAPE

NOTES

UNUSUAL RISKS IDENTIFIED IN CDM RISK ASSESSMENT:

Rev	Date	Revisions	By
JOB: 3 Wilberforce Way SW19 4TH			
DWG: EXISTING AND PROPOSED STREETSCAPE			
JOB NO: 588			
DWG. NO: 588-P06			
REVISION:			
SCALE: 1:100 @ A1			
DATE: 07/10/2014			
DRAWN BY: MC			
CHECKED BY: HH			
DWG. STATUS: PLANNING			

Do not scale this drawing
All dimensions to be checked on site
Holden Harper copyright reserved

Holden Harper
 chartered architects & engineers
 26 High Street, Wimbledon
 London, SW19 5BY
 Telephone: 020 8946 5502
 Email: arch@holdenharper.co.uk

