

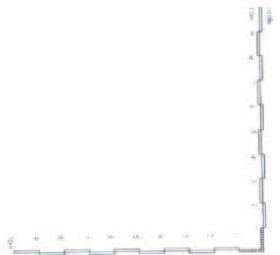
London Borough of Merton  
 100 London Road  
 Morden  
 Surrey  
 SM4 5DX

Scale 1/1250  
 Date 3/6/2014

40A Kenilworth Avenue

This map is based on Ordnance Survey material with the permission of Ordnance Survey on behalf of HMSO. Unauthorised reproduction infringes Crown Copyright and may lead to prosecution or Civil proceedings. London Borough of Merton 100019259. 2012.

DEVELOPMENT CONTROL



- rev h variations of conditions 17.04.2014
- rev g notes added for planning 21.10.2010
- rev f issued for planning consent 21.07.2010
- rev e issued for comment 06.07.2010
- rev d issued for comment 14.06.2010
- rev c issued for comment 24.03.2010
- rev b issued for comment 18.03.2010
- rev a issued for comment 14.01.2010

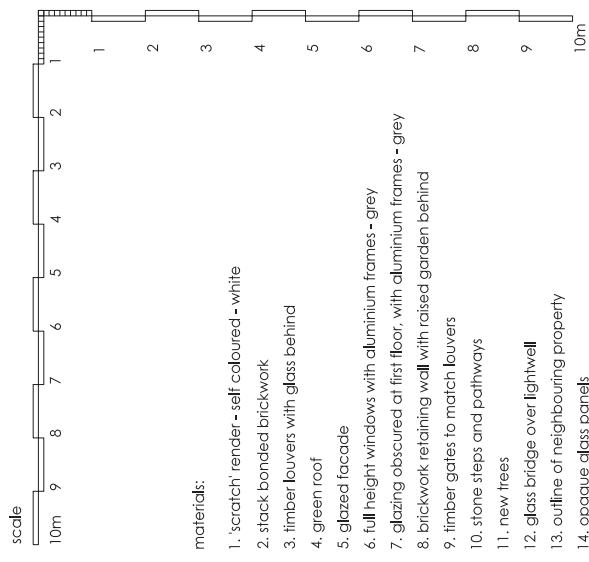
**h 2 architecture**  
 12 LADDERSTILE RIDGE KINGSTON-UPON-THAMES KT2 7LP t. 0845 053 0980

PROJECT 0150  
 40a kenilworth avenue, wimbledon

CLIENT  
 paul + vanessa newman

**proposed** (dwg no. 0150\_2001)  
 site plan

SCALE 200@as DATE Jul 2010 DRAWN mh REVISION h



materials:

- 1. 'scratch' render - self coloured - white
- 2. stack bonded brickwork
- 3. timber louvers with glass behind
- 4. green roof
- 5. glazed facade
- 6. full height windows with aluminium frames - grey
- 7. glazing obscured at first floor, with aluminium frames - grey
- 8. brickwork retaining wall with raised garden behind
- 9. timber gates to match louvers
- 10. stone steps and pathways
- 11. new trees
- 12. glass bridge over lightwell
- 13. outline of neighbouring property
- 14. opaque glass panels

- rev h issued for variation consent 20.03.2014
- rev g issued for variation consent 25.10.2013
- rev f notes added 21.10.2010
- rev e issued for planning consent 21.07.2010
- rev d issued for comment 04.07.2010
- rev c issued for comment 14.06.2010
- rev b issued for comment 24.01.2010
- rev a issued for comment 14.01.2010

**h 2 architecture**  
 12 LADDERSTILE RIDE KINGSTON-UPON-THAMES KT2 7LP t. 0845 053 0880

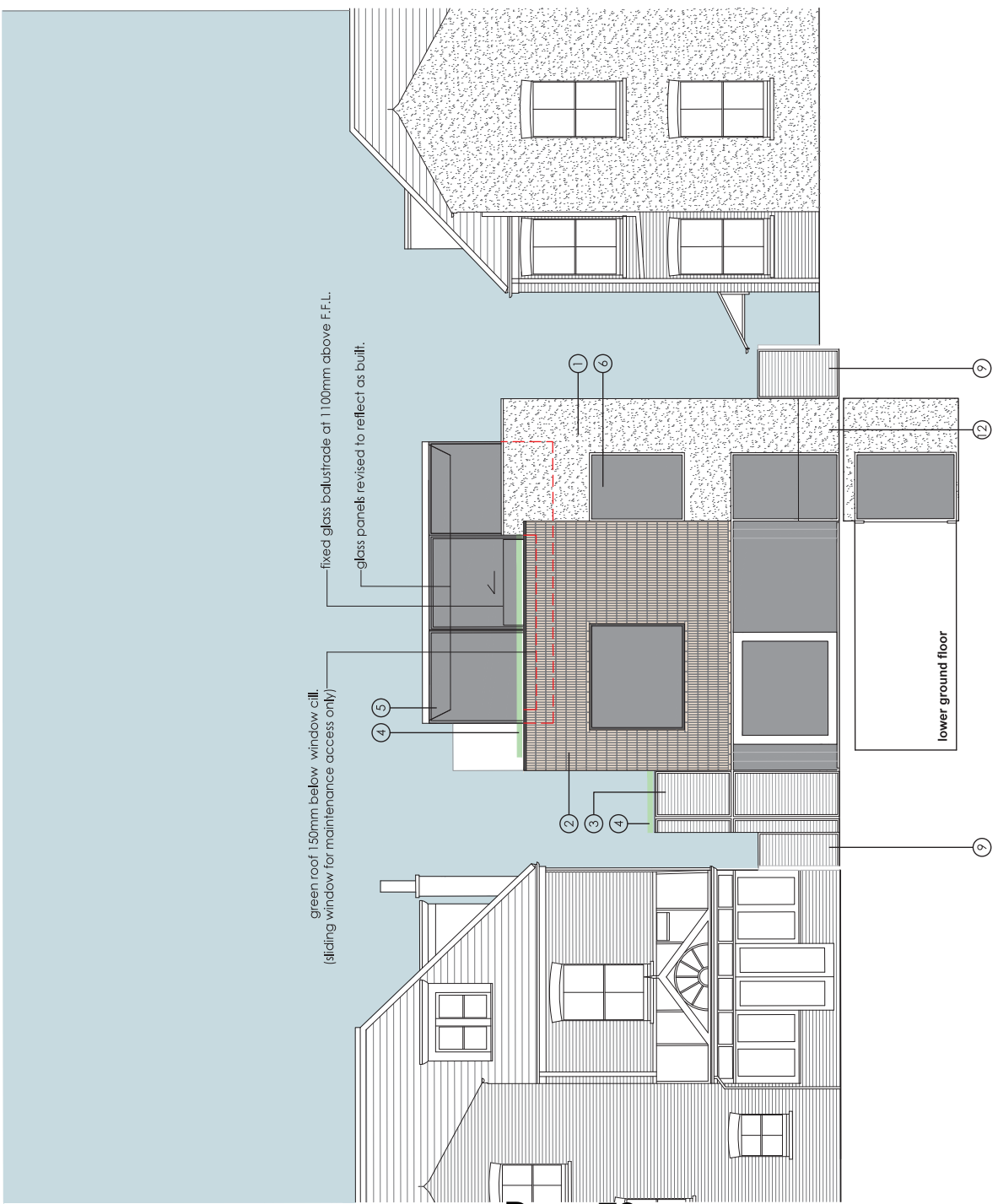
PROJECT 0150

**40a kenilworth avenue, wimbledon**

CLIENT  
**paul + vanessa newman**

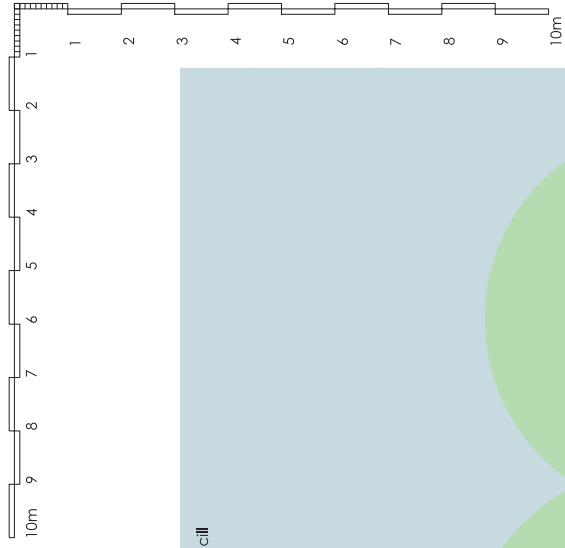
**proposed** (dwg no. 01.50\_p007)  
 rear elevation (west)

SCALE 100@A3  
 DATE **jun 2010**  
 DRAWN **mh**  
 REVISION **h**



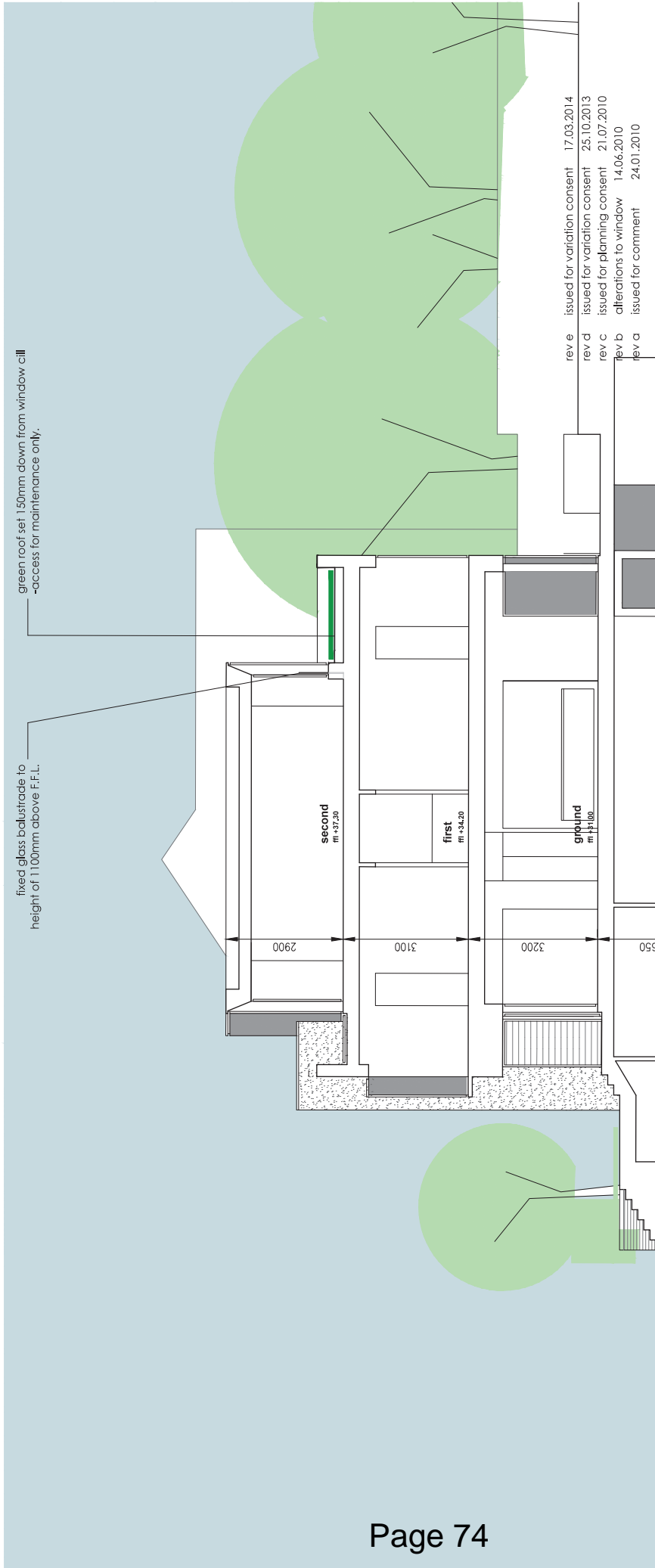
DATUM 25.00m

scale



green roof set 150mm down from window cill  
-access for maintenance only.

fixed glass balustrade to  
height of 1100mm above F.F.L.



rev e	issued for variation consent	17.03.2014
rev d	issued for variation consent	25.10.2013
rev c	issued for planning consent	21.07.2010
rev b	alterations to window	14.06.2010
rev a	issued for comment	24.01.2010

**h 2 architecture**  
12 LADDERSTILE RIDE KINGSTON-UPON-THAMES KT2 7LP t. 0845 063 0880

PROJECT 0150

40a kenilworth avenue, wimbledon

CLIENT  
paul + vanessa newman

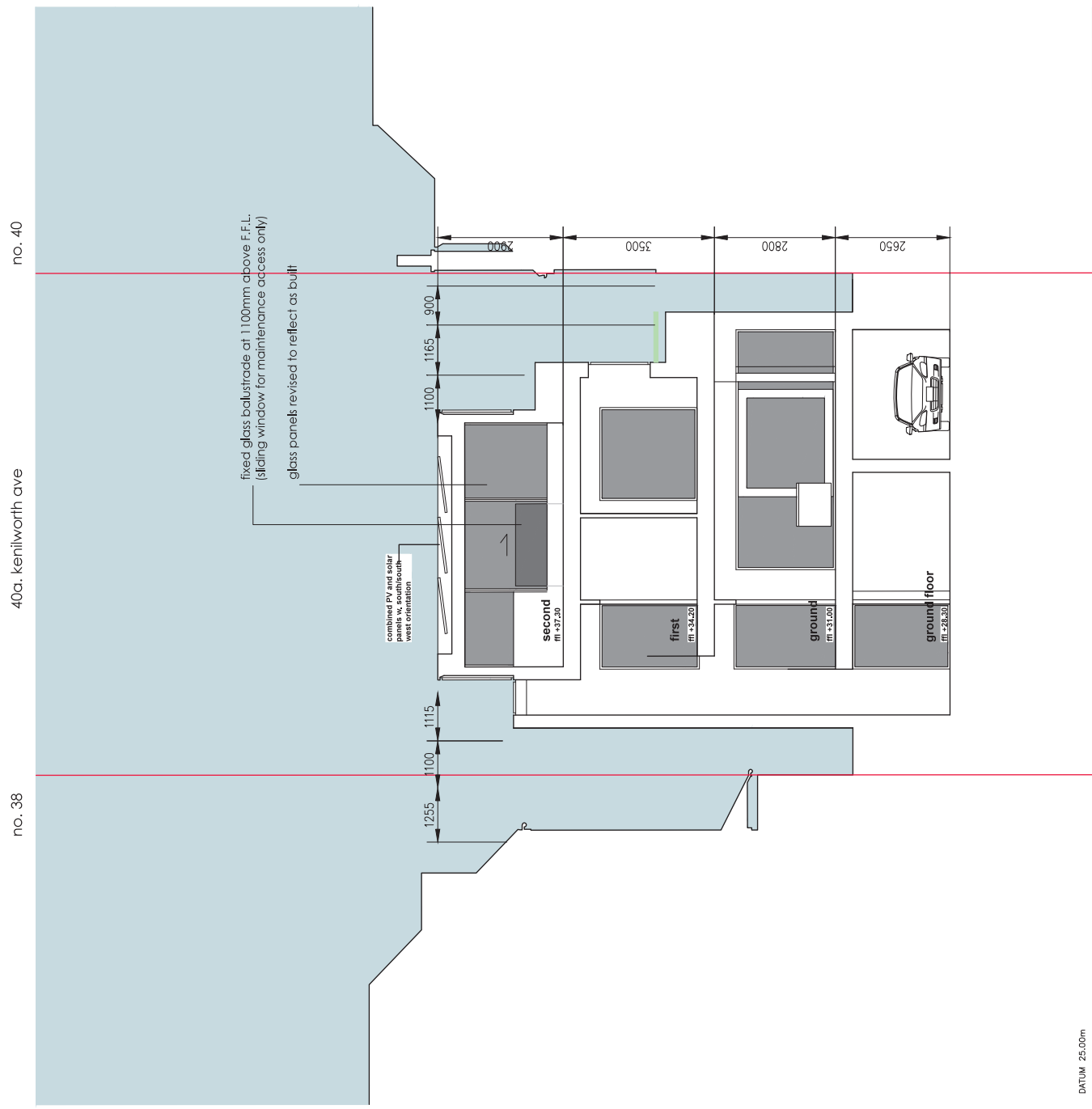
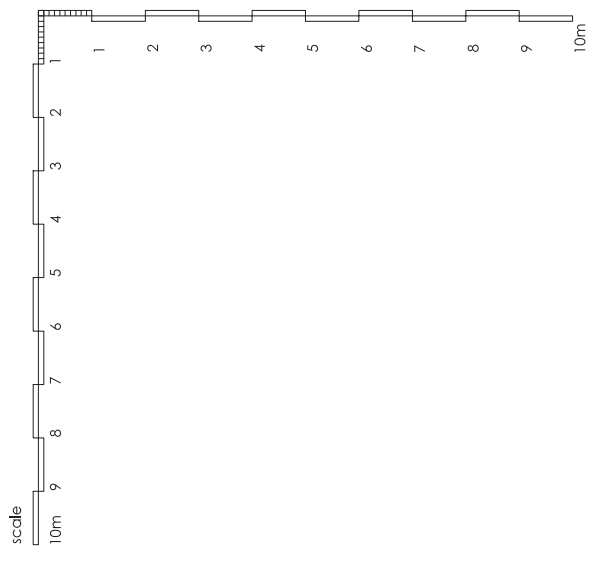
**proposed** (dwg no. 01.50\_p011)  
section east - west

SCALE  
100@A3

DATE  
Jan 2010

DRAWN  
mh

REVISION  
e



- rev h issued for variation consent 20.03.2014
- rev g issued for variation consent 25.10.2013
- rev f issued for planning consent 21.07.2010
- rev e issued for comment 06.07.2010
- rev d issued for comment 02.07.2010
- rev c issued for comment 14.06.2010
- rev b issued for comment 24.03.2010
- rev a issued for comment 14.01.2010

**h 2 architecture**  
 12 LADDERSTILE RIDE KINGSTON-UPON-THAMES KT2 7LP t. 0845 053 0880

PROJECT 0150  
 40a kenilworth avenue, wimbledon

CLIENT  
 paul + vanessa newman

**proposed** (dwg no. 01.50\_p010)  
 section south - north

SCALE 100@A3 DATE jun 2010 DRAWN mh REVISION h

DATUM 25.00m

This page is intentionally left blank