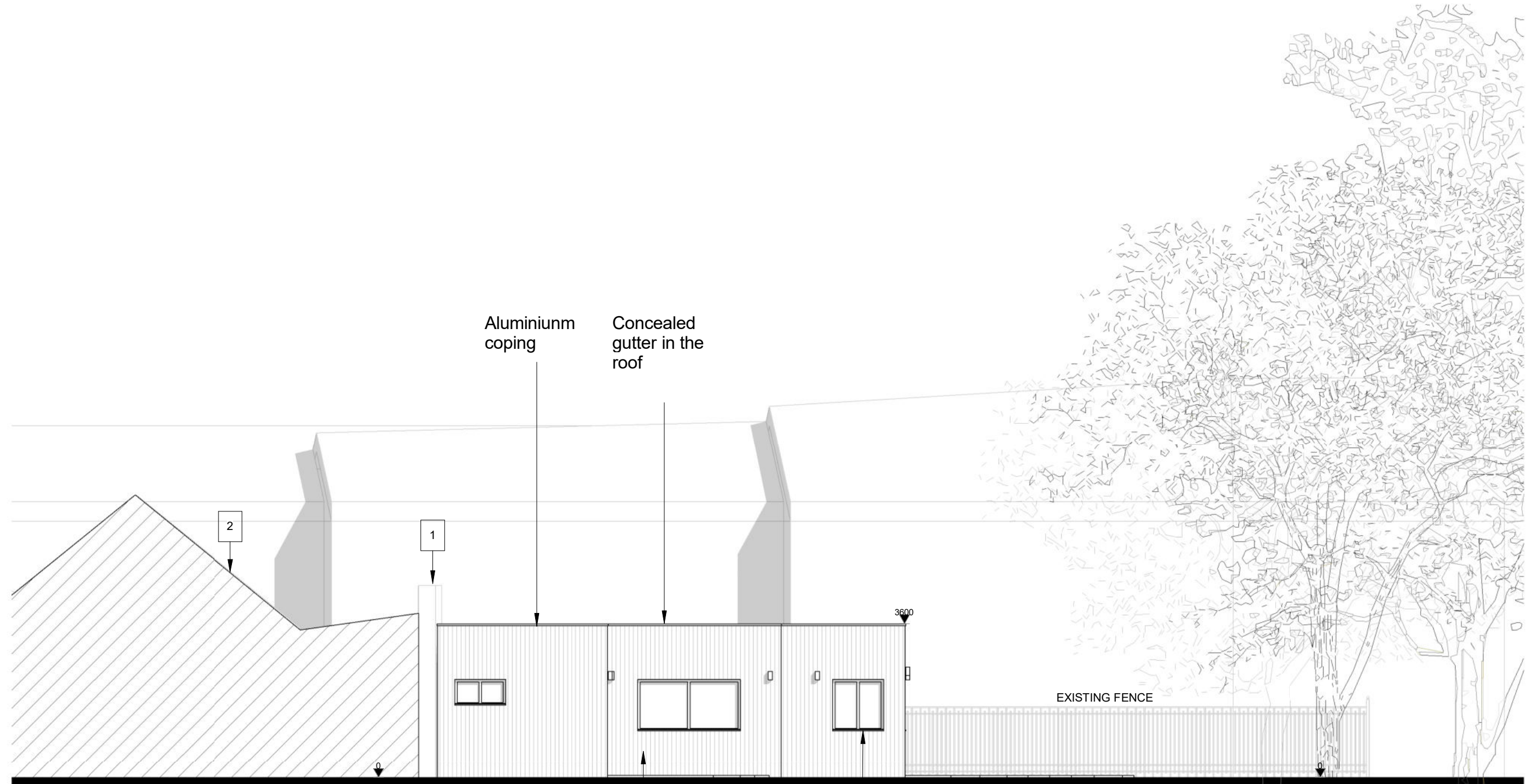


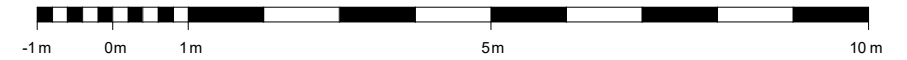
NOTES
 CLADDING SURFACES COATED WITH AN ANTI-GRAFFITI GLAZE AND AS ALTERNATIVE MEASURES FOR REDUCING GRAFFITI WILL BE GROWING AN APPROPRIATE NON-INVASIVE CLIMBING PLANT UP THE WALL



- 1. EXISTING DUNDONAL SCHOOL BOUNDARY WALL
- 2. EXISTING DUNDONAL SCHOOL BUILDING
- 3. EXISTING FENCE OF TENNIS COURT

Timber cladding

Aluminium windows frame



Proposed South Elevation from tennis courtyard

This page is intentionally left blank