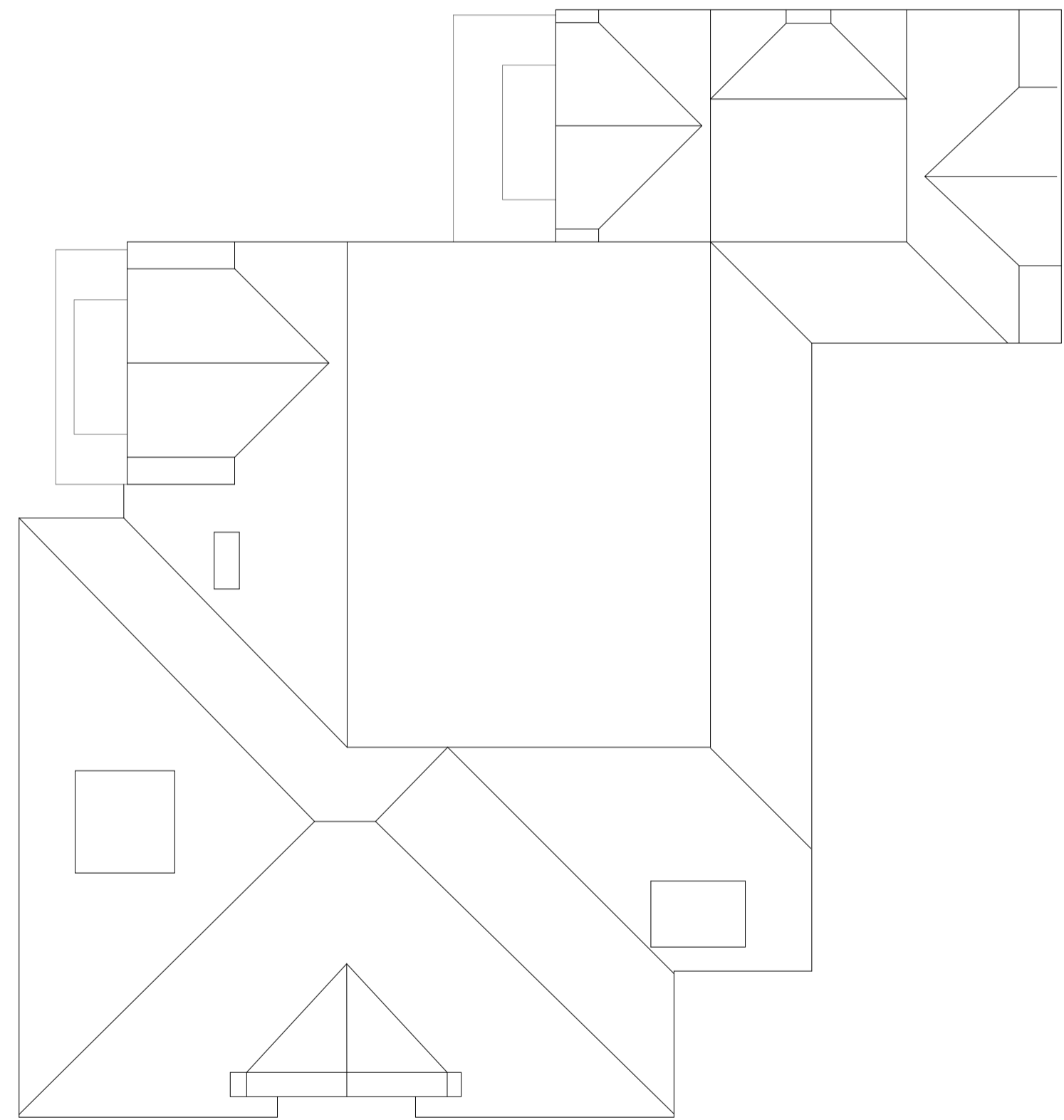
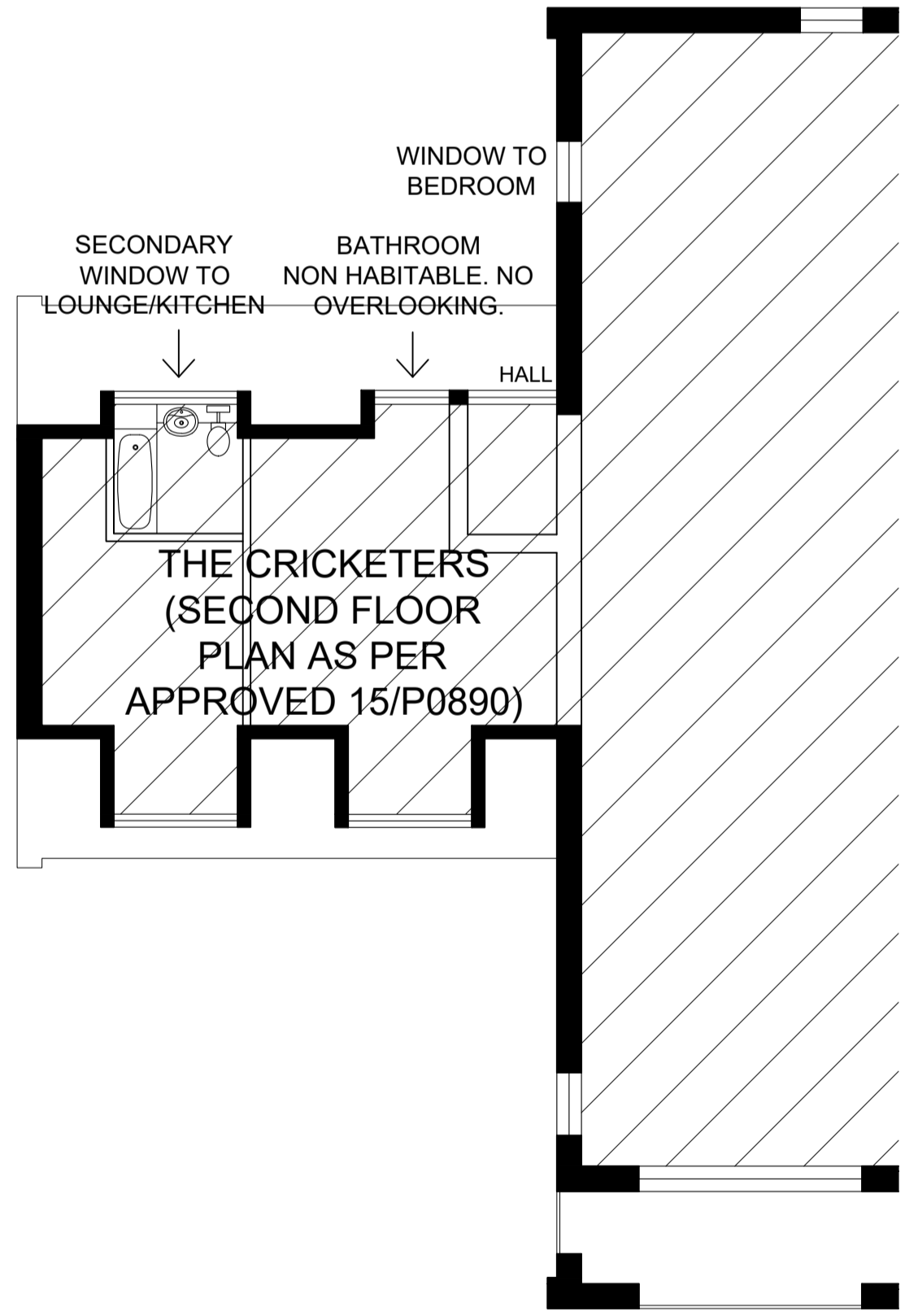
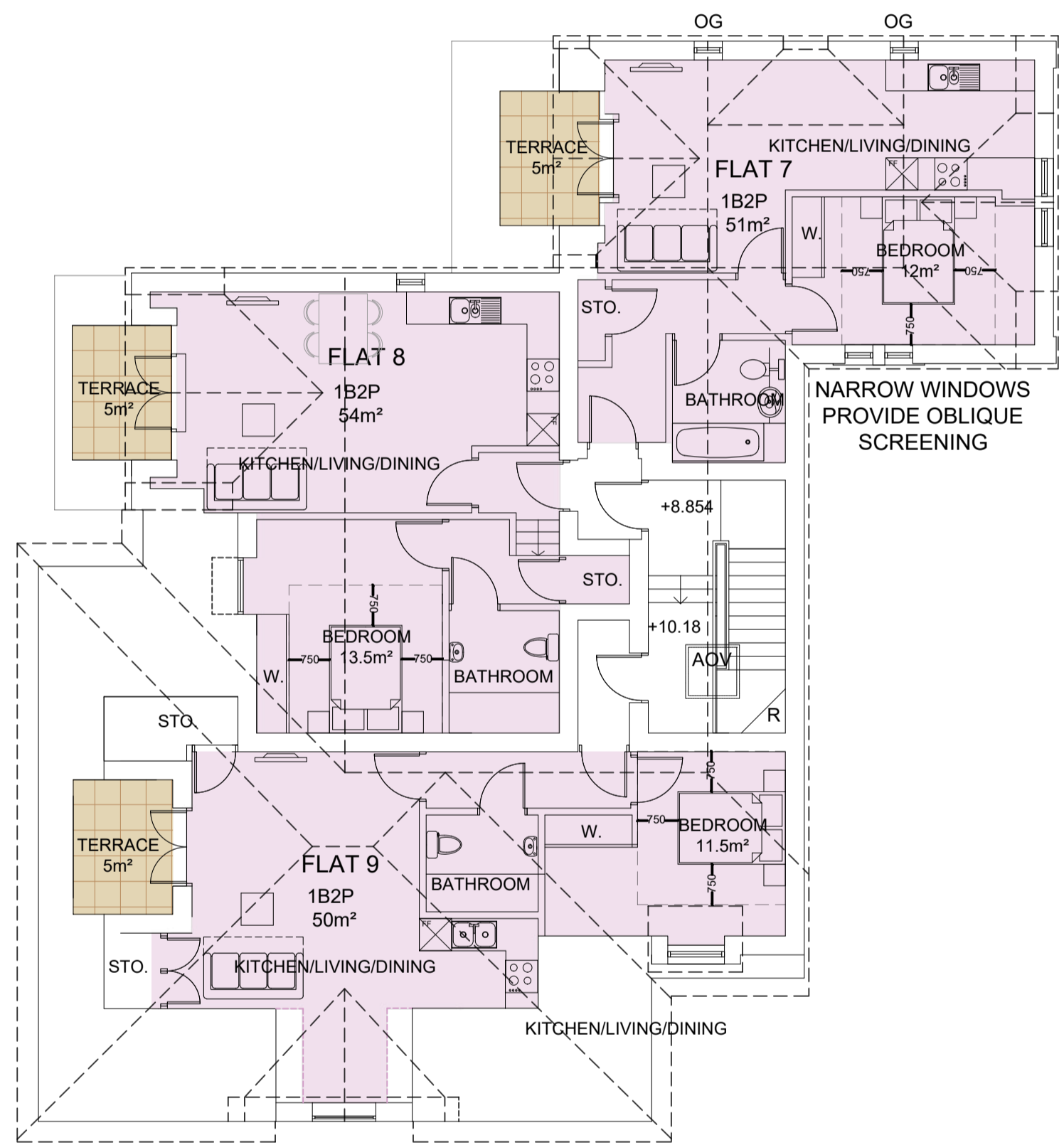


Accommodation Schedule		
Flat 1	1B2P	56m <sup>2</sup>
Flat 2	2B3P	67m <sup>2</sup>
Flat 3	2B4P	77m <sup>2</sup>
Flat 4	1B2P	53m <sup>2</sup>
Flat 5	2B4P	71m <sup>2</sup>
Flat 6	2B4P	73m <sup>2</sup>
Flat 7	1B2P	51m <sup>2</sup>
Flat 8	1B2P	54m <sup>2</sup>
Flat 9	1B2P	50m <sup>2</sup>

REVISIONS		DO NOT SCALE	
REV	DATE	NOTES	INITIAL
A	July	Added furniture and dimensions Minor internal alterations	KR
B	Sep	Private terrace to flat 7 and 8. Decrease in floor space to flat 7 and 8.	KR
C	10.11.20	Second floor and roof plan revised to include larger private amenity to flats 7, 8 and 9.	NG
D	Feb 2021	Revised accommodation schedule	KR
E	May 2021	Escape stairs added for Verity Hall. Part internal layout added to the 'Cricketers'.	KR



Second floor

Roof plan

STATUS **Planning**

Notes

Howard Fairbairn:MHK  
chartered architects

Howard Fairbairn Project Services Ltd  
Lambourn House, Redlands  
Coulston  
Surrey  
CR5 2HT



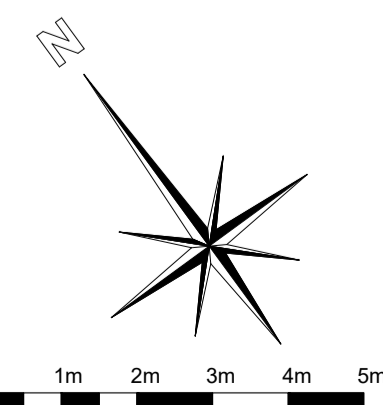
Telephone  
020 8665 5252

Website  
hfmhk.com

Email  
croydon@hfmhk.com

Client	Parkside Property		
Project	Mitcham Fire Station 30 Lower Green West, Mitcham		
Title	Proposed second floor and roof plan		
Drawn by	KR	Checked by	
Scale	1:100 @ A1	Date	May 2021
CAD Ref:	6724		

Dwg N° 6724-PL-304 Rev E



This page is intentionally left blank