

Children and Young Person's Scrutiny Panel – 27th April 2021

Page 1

Dr Dagmar Zeuner, Director of Public Health

Merton Public Health Intelligence

27th April 2021

Enquiries: ben.bezuidenhout@merton.gov.uk

Agenda Item 4



Summary key messages

London overview

- The current estimated London R value is between **0.8 and 1.1** (As of 16th Apr)

Cases (15th Apr – 21st Apr):

- 7 day case rate (all ages) **25.2 cases per 100,000** (up from 21.9 previous week).
- There were **54** new COVID cases in Merton.
- New COVID variant: estimated to be responsible for 100% of cases in Merton for week ending 14th Apr.

Deaths:

- There were **2** new registered Merton COVID death for the week ending 9th Apr.
- In total Merton has seen 481 deaths due to COVID.

Testing (13th Apr – 19th Apr / pillar 2 PCR tests only – this excludes Lateral Flow tests):

- 7 day testing rate **199.0 daily tests per 100,000** (up from 138.0 previous week)
- 7 day test positivity decreased to **0.6%**.

Positive cases per 100,000 and test positivity across London boroughs

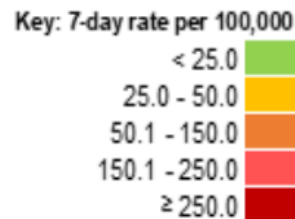
27th April 2021

For reporting period 01.04.2021 – 07.04.2021

Colour of box illustrates weekly cases per 100,000 for that week

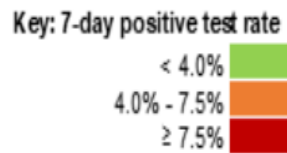
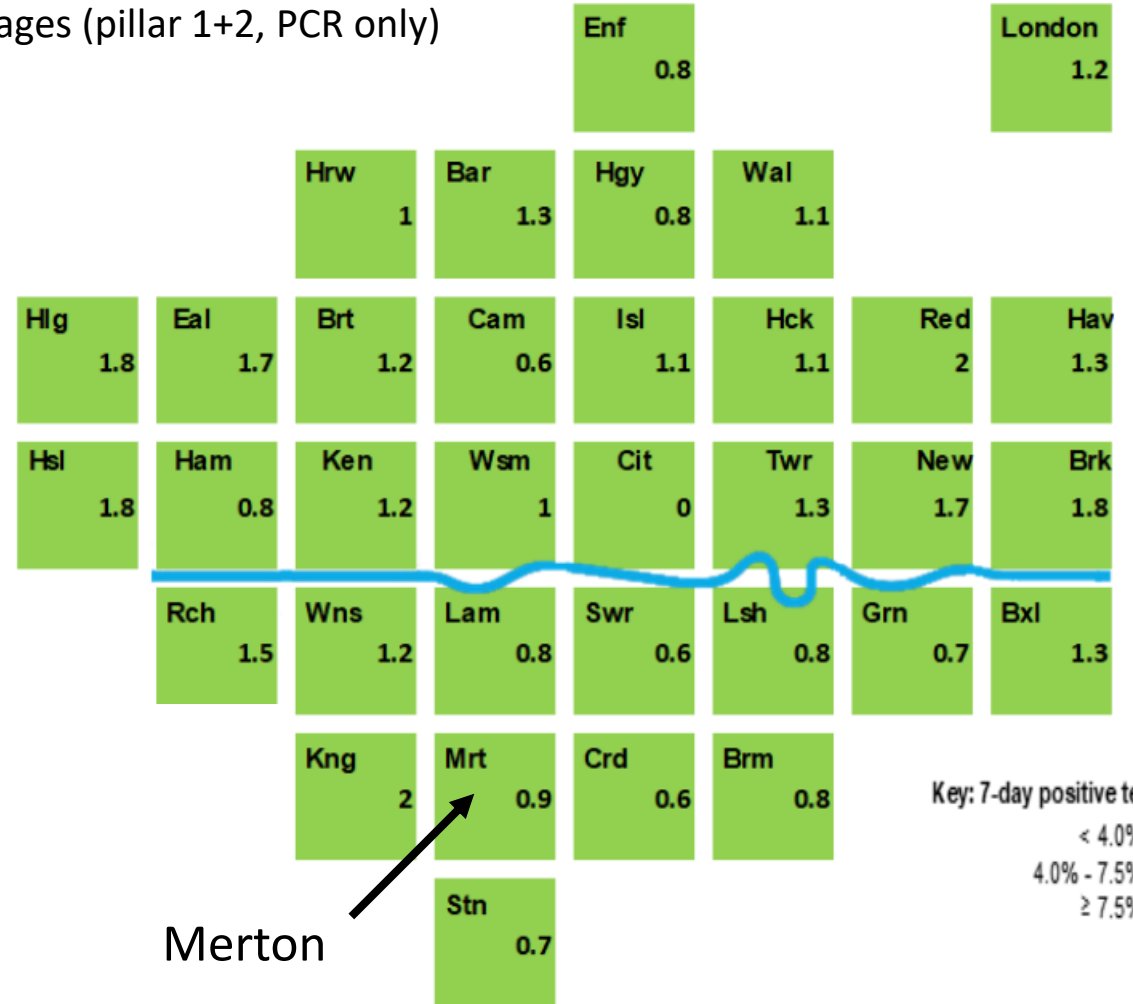
UPDATE NOT AVAILABLE

Positive tests per 100,000 population – all ages (Pillar 1 + 2, PCR only)



Source: PHE/CTTOG slides

Percentage of tests positive – all ages (pillar 1+2, PCR only)

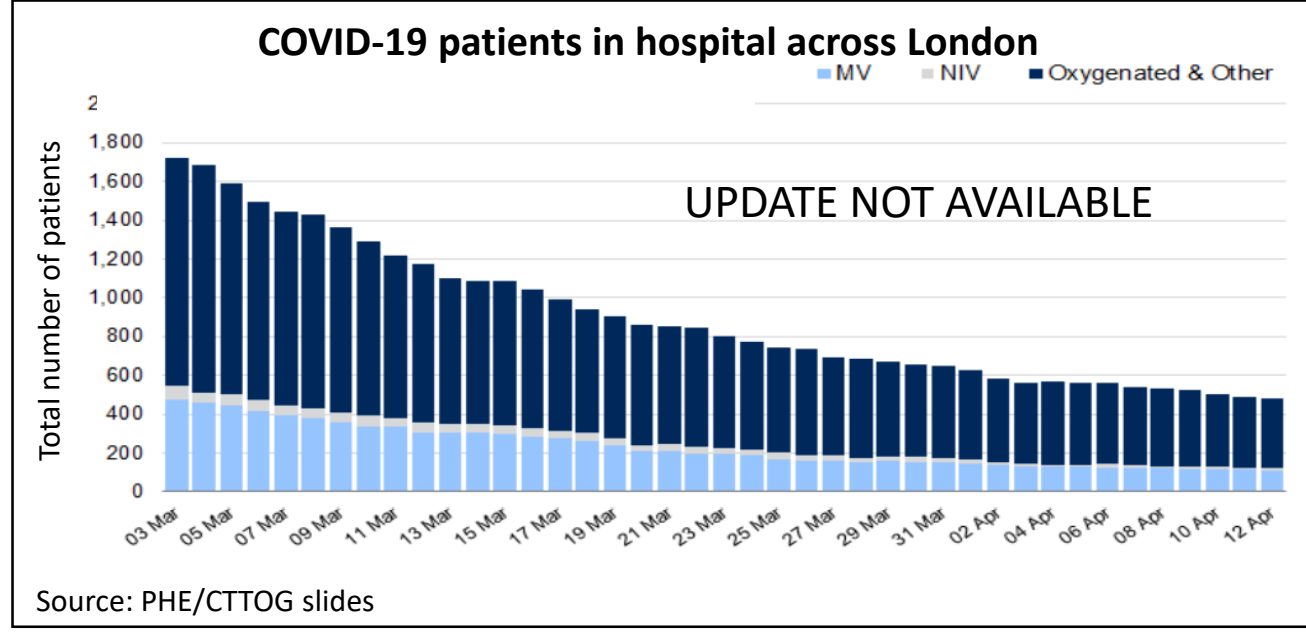
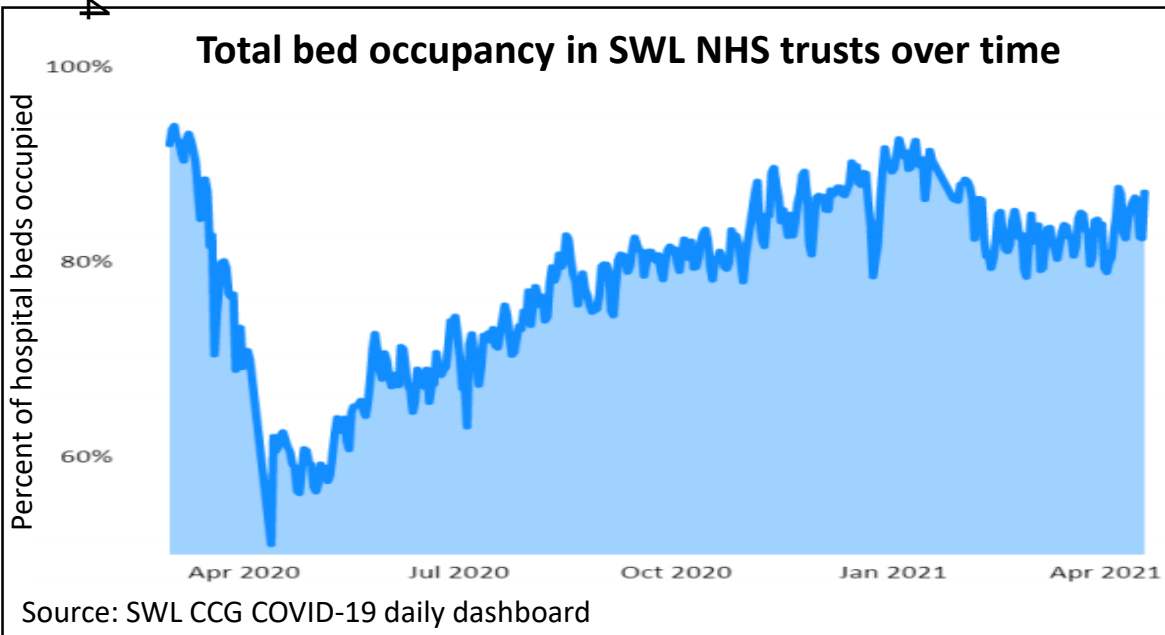
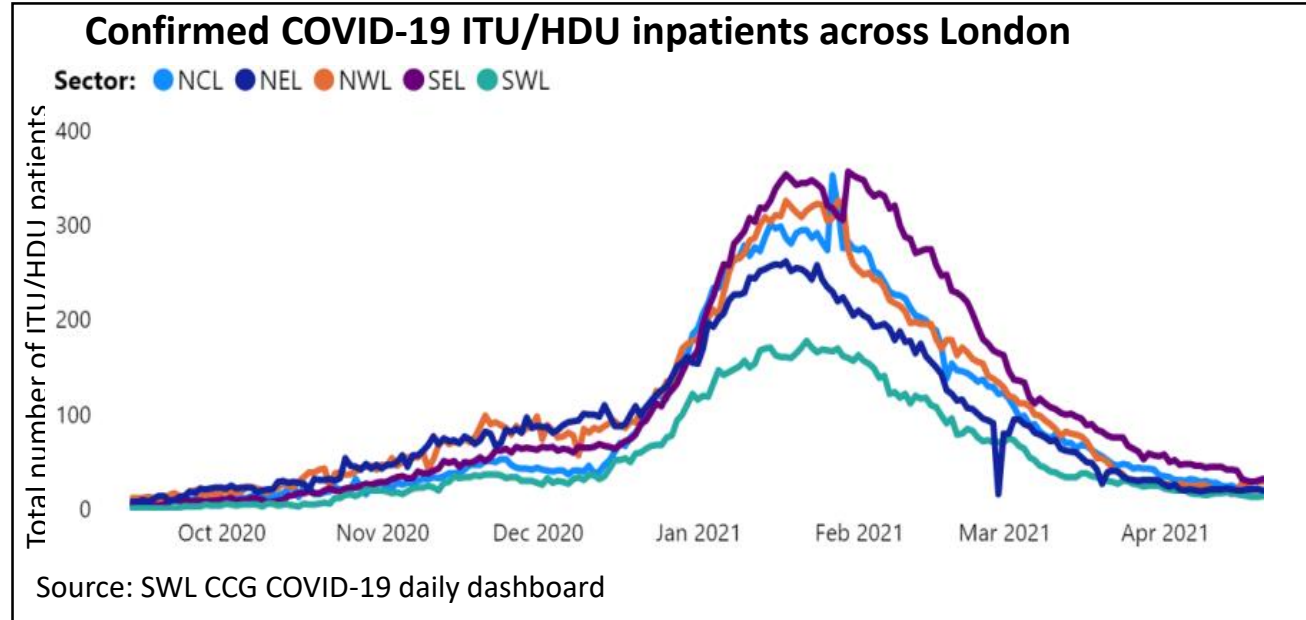
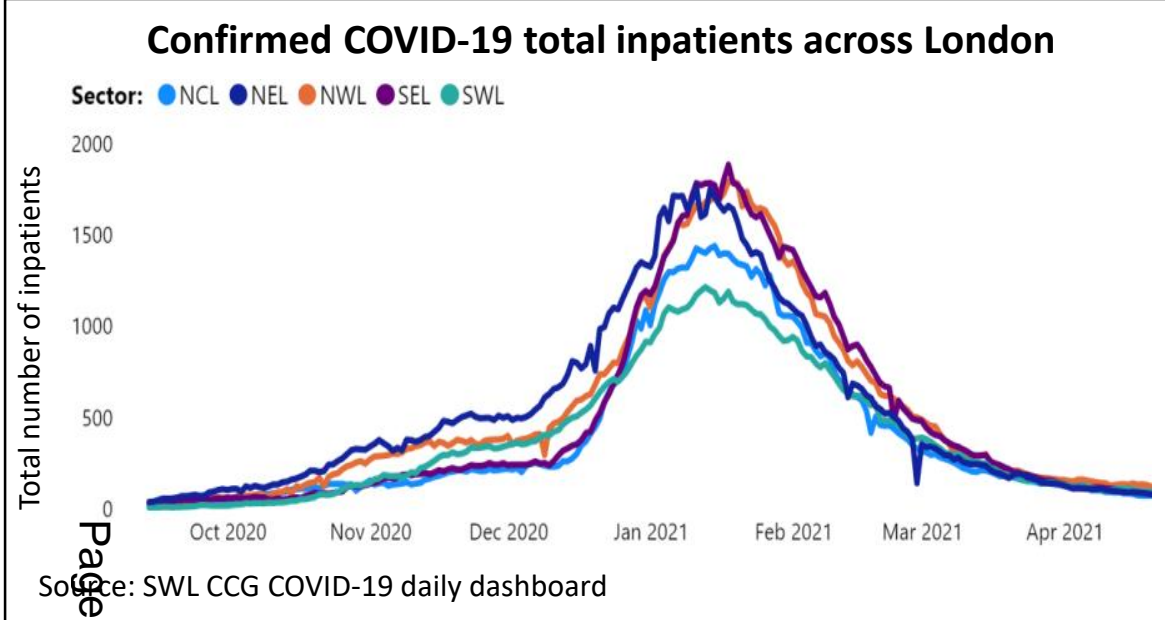


Source: PHE/CTTOG slides

Page 3

Merton

Merton



Local analysis: COVID-19 cases and testing

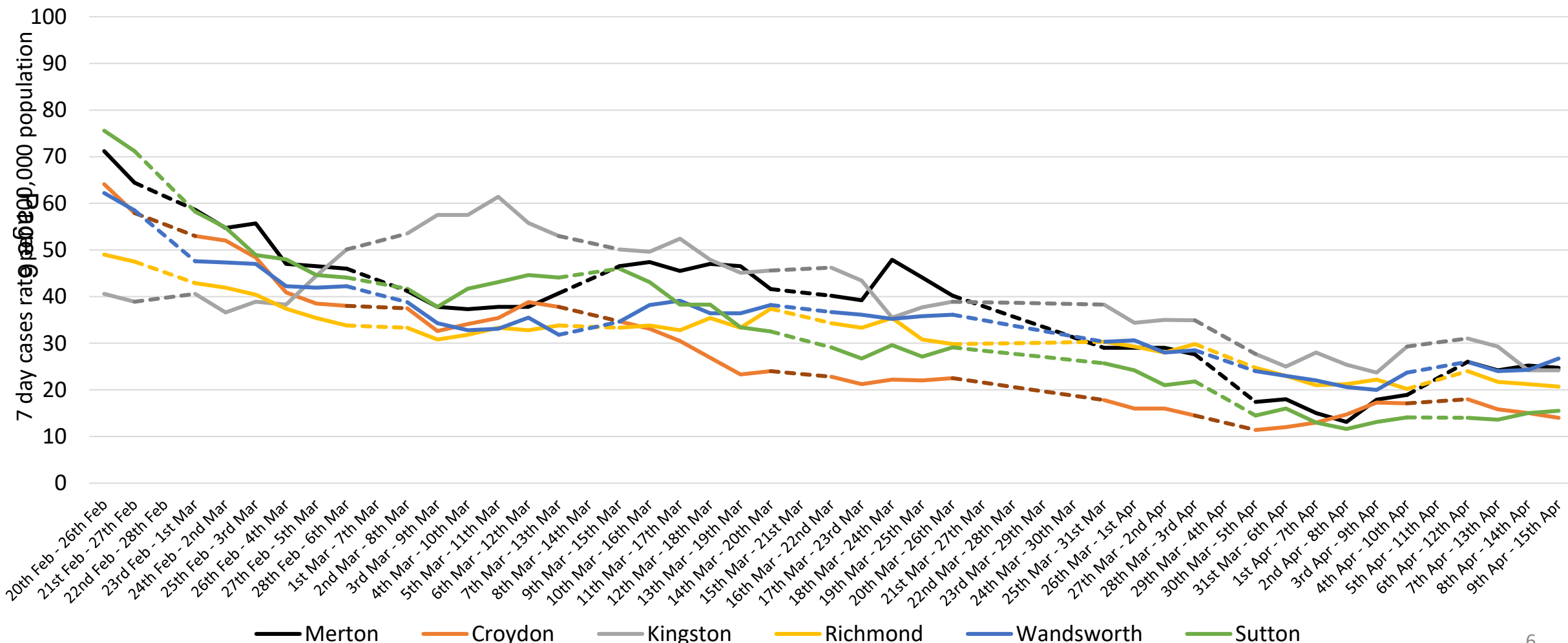
Page 5

Rolling 7-day rate of confirmed positive cases per 100,000 population in Merton compared to other South West London boroughs (Pillar 1 & 2)

Source: PHE/PHEC Daily Report

Reporting frequency: Daily

Key message: Merton has the 2nd highest rate of cases among SWL boroughs



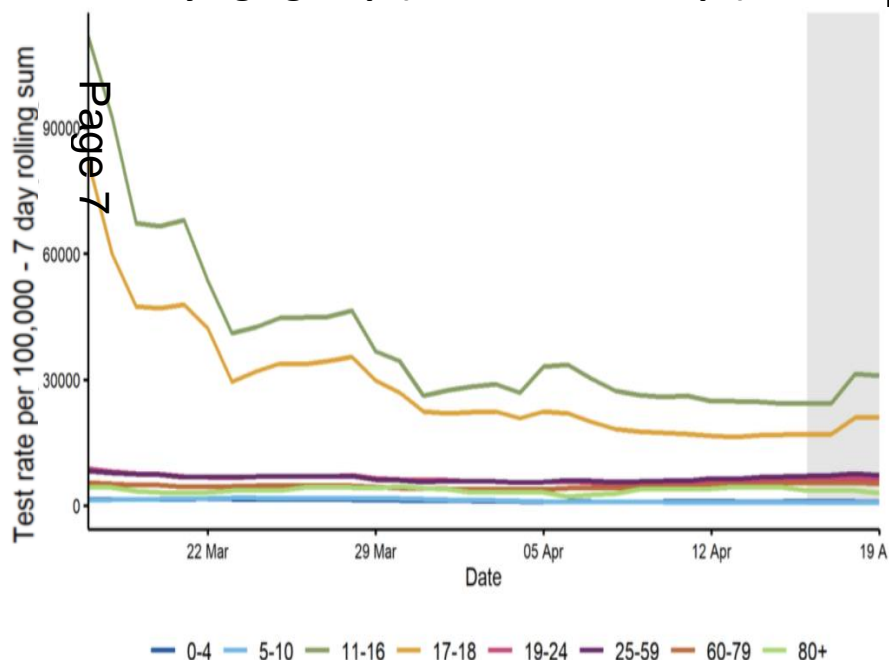
Please note there were reporting gaps – the dotted lines refers to periods when data was not available.

7-day rolling COVID-19 cases and testing rates per 100,000 in Merton by age group over time (Pillar 2 PCR only)

Key messages

- Testing among school age pupils (11-18) have declined in the last few weeks since pupils returned to the class room. There will be close monitoring of this age group and activities around schools in the forthcoming weeks.
- Overall case rates have been low over the past few weeks.
- However, case rates in younger people aged 11-16 are decreasing at a slower rate, but it is important to note these case rates are based on small numbers.

7-day rolling testing rate per 100,000 in Merton by age group (17th Mar – 19th Apr)

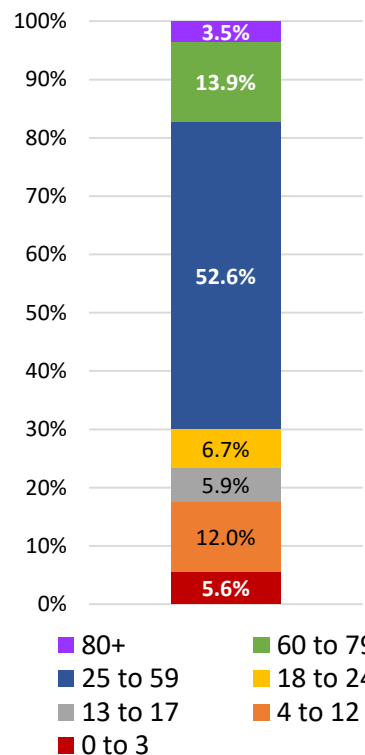


Grey shading: 4 most recent days subject to incomplete data

Note: Some categories changed since last week

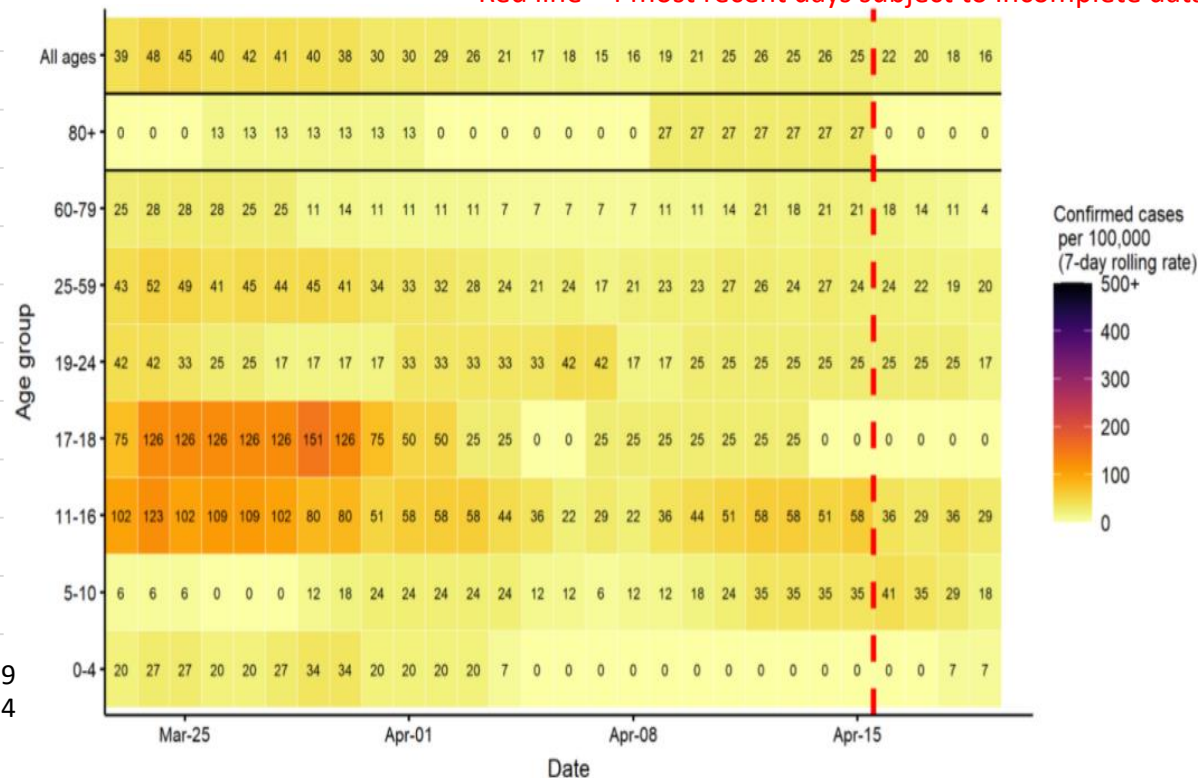
Merton breakdown by age group, 2021

Source: GLA, 2018



7-day rolling case rates per 100,000 by age group in Merton (23rd Mar – 19th Apr)

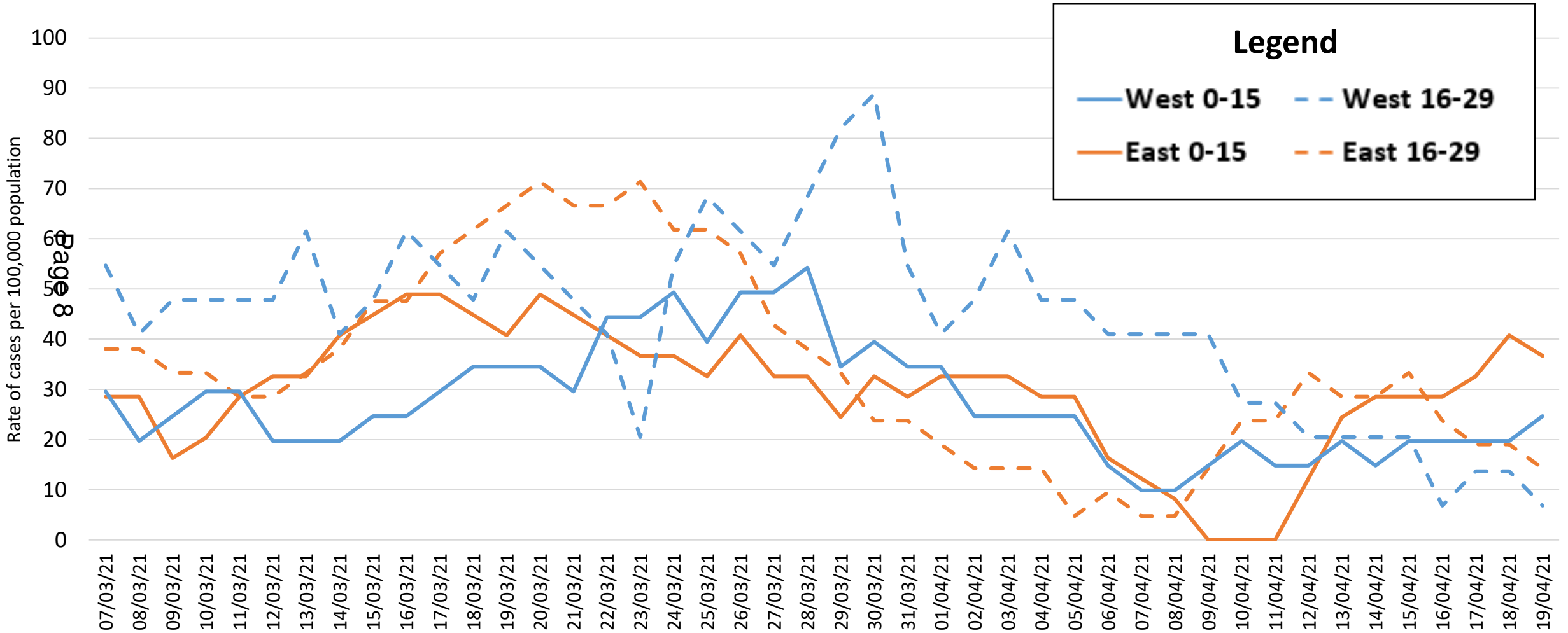
Red line - 4 most recent days subject to incomplete data



COVID-19 rate of cases per 100,000 7-day rolling rate among younger age groups in East and West Merton (Pillar 1+2, PCR+LFDs)

Source: PHE/PHEC Daily Report

Reporting frequency: Daily

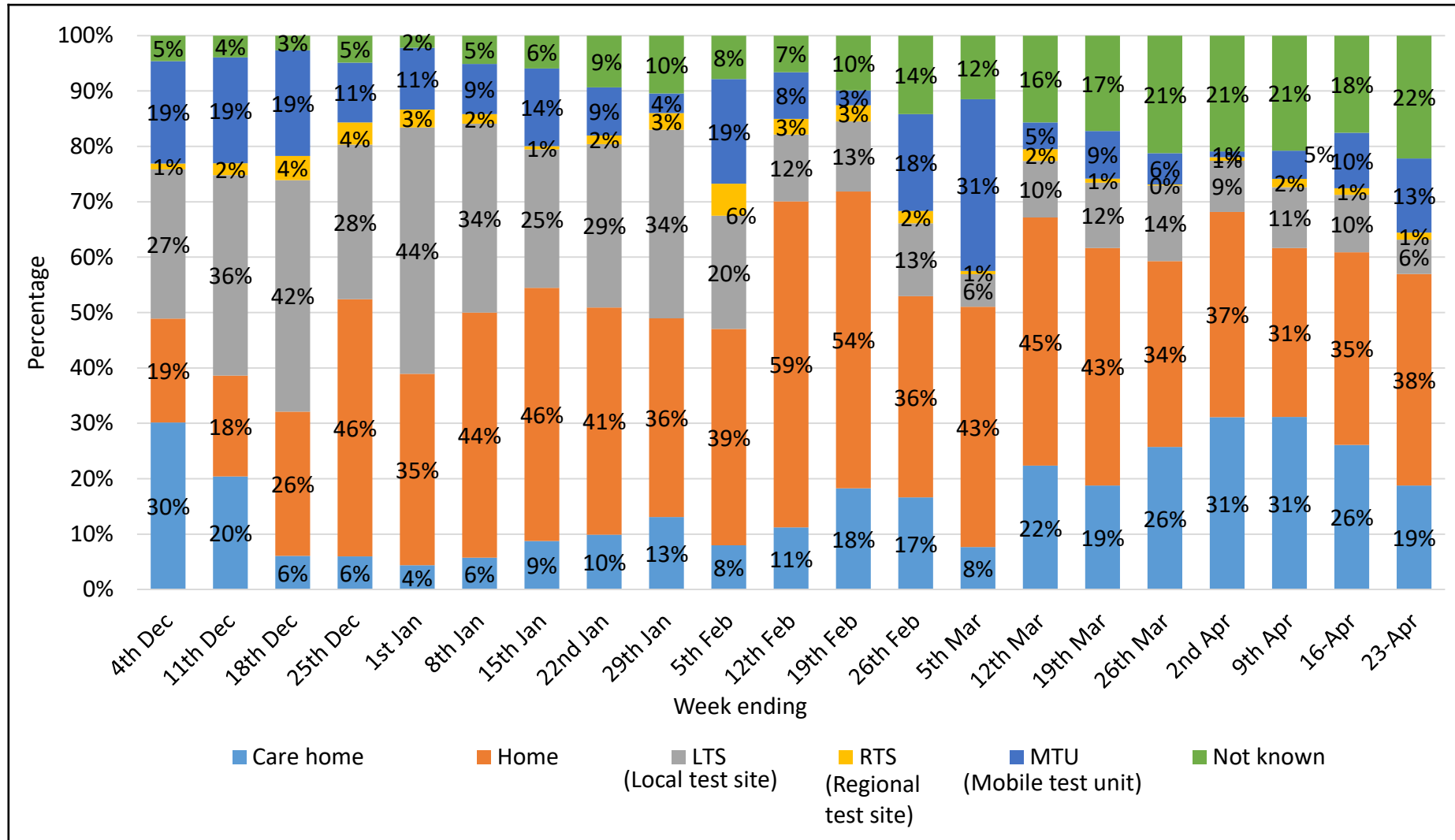


Covid-19 PCR Test Overview by Merton Residents (1st Dec 2020 – 23rd Apr* 2021)

27th Apr 2021

Key Messages:

- Between 18 -59% of tests in Merton residents are at home.
- This averages out at 39% over the 21 week period.
- MTU's account for between 1-31% of all Merton resident tests and 12% over the 21 week time period.
- RTS account for 2% of tests during the 21 week time period (n=2,009)



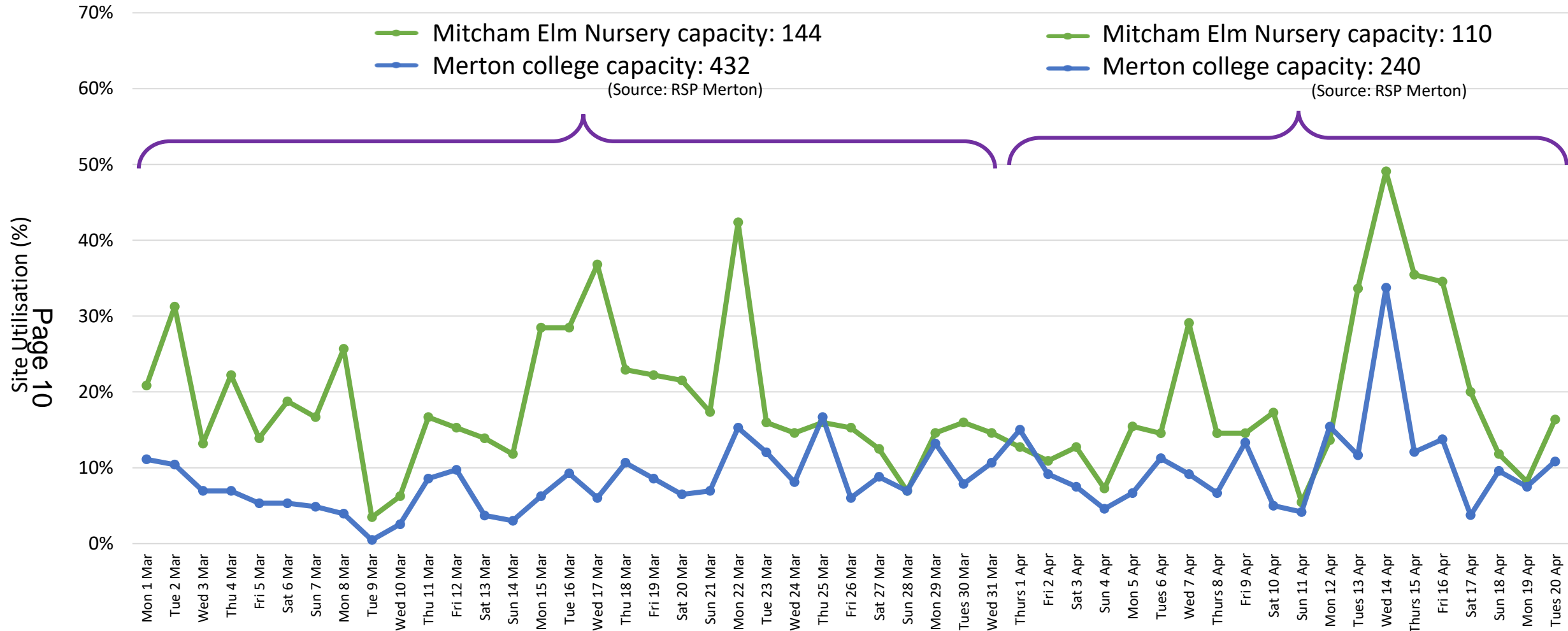
*Data for last few days not fully complete due to delay in reporting

Note: Only includes pillar 2 and PCR tests and is for tests and not persons, so multiple tests will likely exist

Source: PHE Power BI tool

Covid-19 PCR LTS Utilisation (17th Feb – 20th Apr 2021)

27th Apr 2021



Key Messages:

- Average test utilisation has dropped across both sites – please note capacity was dropped on 1st Apr
 - Mitcham Elm Nursery: 78% (Jan) → 36% (Feb) → 19% (Mar/Apr)
 - Merton College: 36% (Jan) → 8% (Feb) → 8% (Mar) → 11% (Apr)

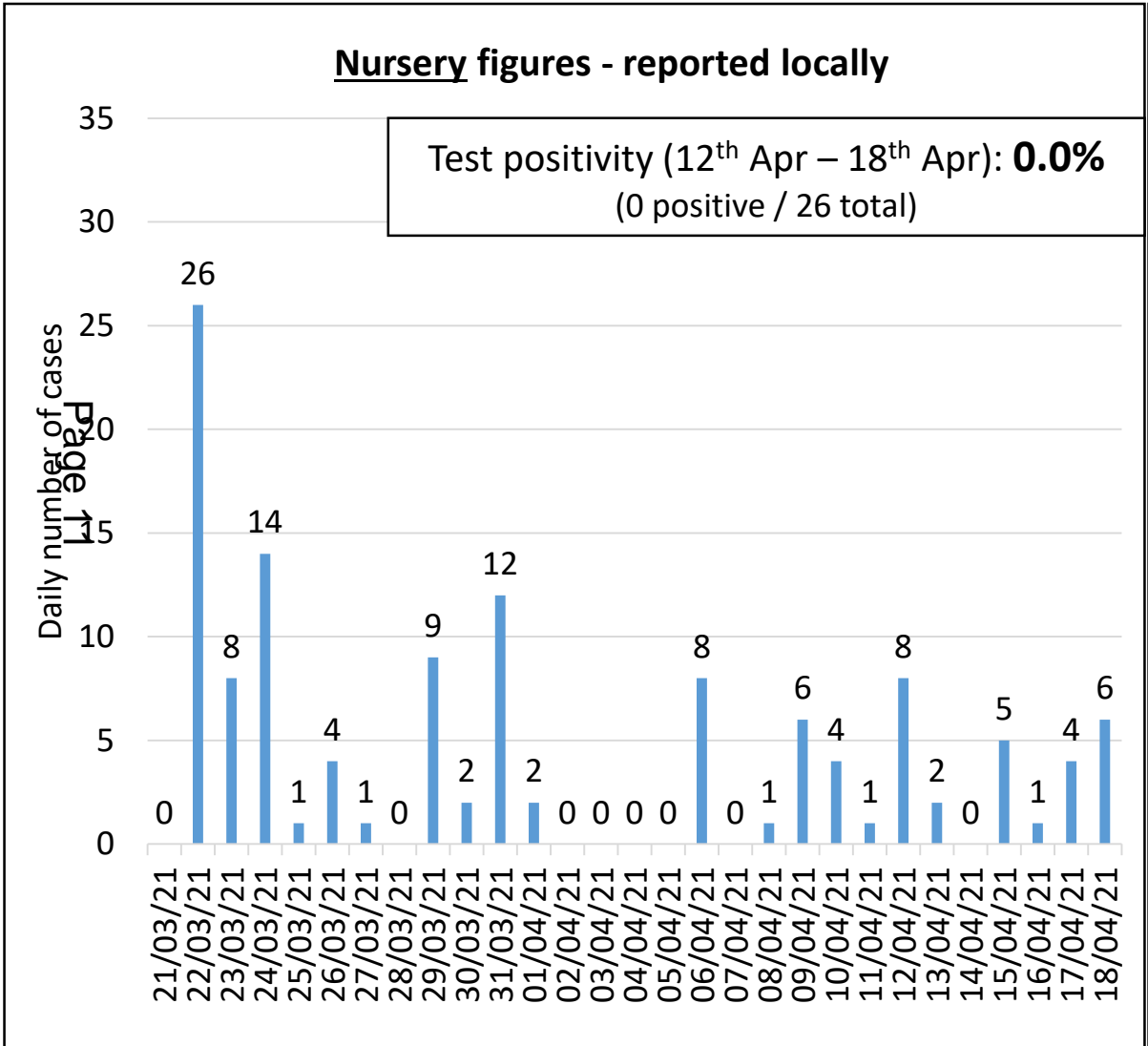
Sources: Tests: Regional Dashboard (DHSC) / Capacity: RSP - LB Merton

For internal use only. Not for wider circulation

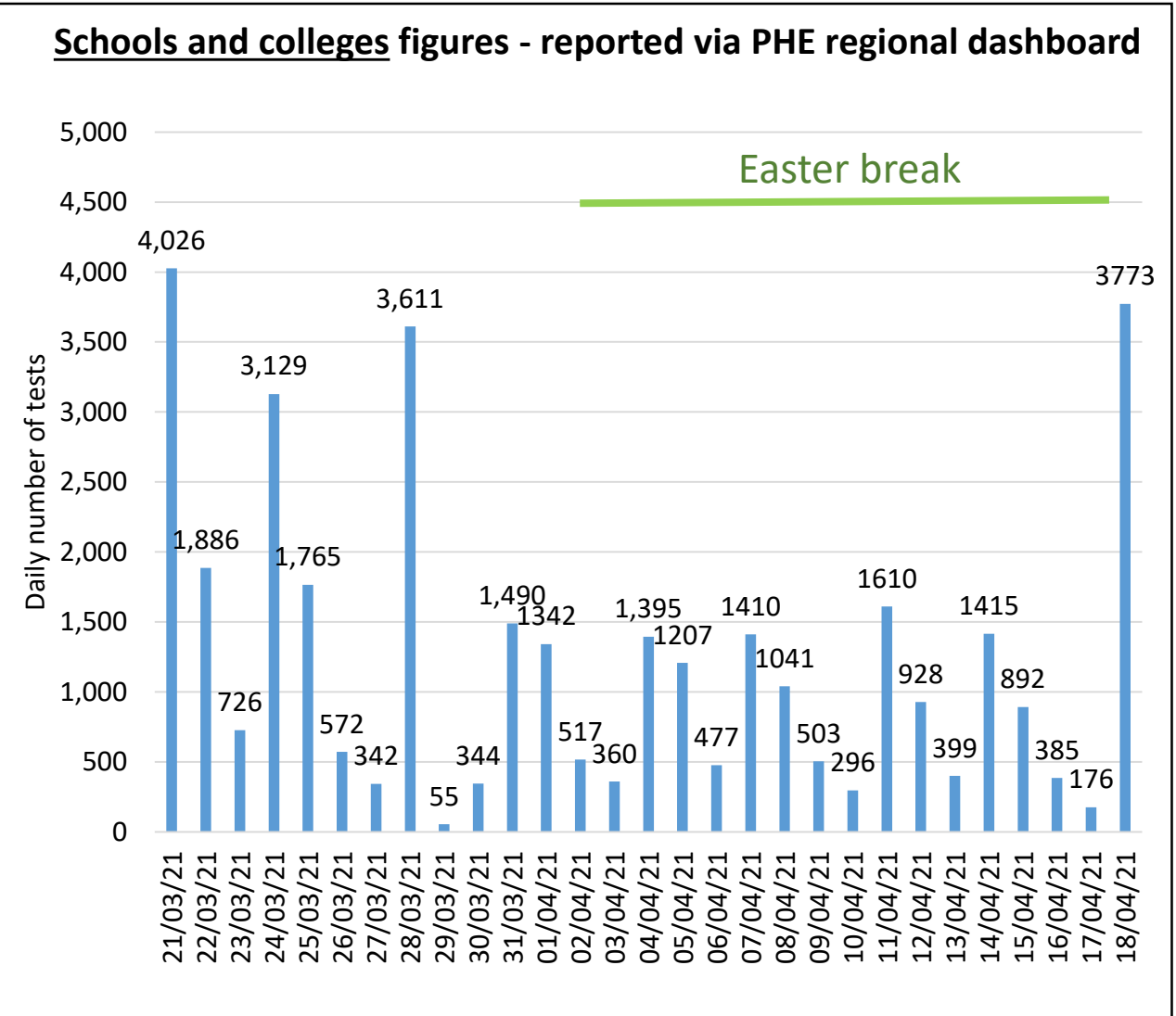
Enquiries: ben.bezuidenhout@merton.gov.uk

Daily number of completed LFDs in Merton schools, colleges, and nurseries

Figures reported locally and via PHE regional dashboard



Source: Data collected directly from Merton nurseries



Source: PHE Regional Dashboard

Merton schools update

Page 12

Key messages

Update

- Since 8th March all schools (primary, secondary, special schools and nursery classes) are open for all pupils (with the exception of students shielding up to 1st April)
- Schools (and school transport) continue to look to their updated risk assessments to ensure that measures are in line with government guidance to mitigate risk
- Systems of control remain in place – face coverings expected to no longer be recommended from 17th May
- Continued coordination with LCRC for outbreak management
- Since 12th April all parents able to access wraparound and extra-curricular provision
- Holiday and after school clubs now open (with restrictions as per guidance)
- Indoor and outdoor sports competitions now permitted (with restrictions as per guidance)
- Local educational visits now permitted as of 12th April, residential visits no earlier than 17th May

Attendance figures

- Pupil attendance since return has been good in the majority of schools.
- The average attendance (from the schools that completed the DfE return) on 20th April was 95.5%.

Testing overview in Merton schools

Key messages

Secondary schools

- Schools moved to home testing model (for pupils, following the first 3 onsite tests)
- Schools have retained small onsite ATS as per guidance
- Schools continue to provide pupils and staff with home LFD test kits to test twice weekly
- Positive LFDs are required to be followed up with a confirmatory PCR test within 2 days
- In line with national guidance, parents of pupils are also encouraged to test twice weekly

Primary schools

- Merton primary schools are providing home LFD test kits for staff to test twice weekly
- Positive LFDs are required to be followed up with a confirmatory PCR test within 2 days
- Pupils in primary schools are not conducting asymptomatic testing as per guidance. Parents of pupils encouraged to access home asymptomatic LFD testing as per national programme