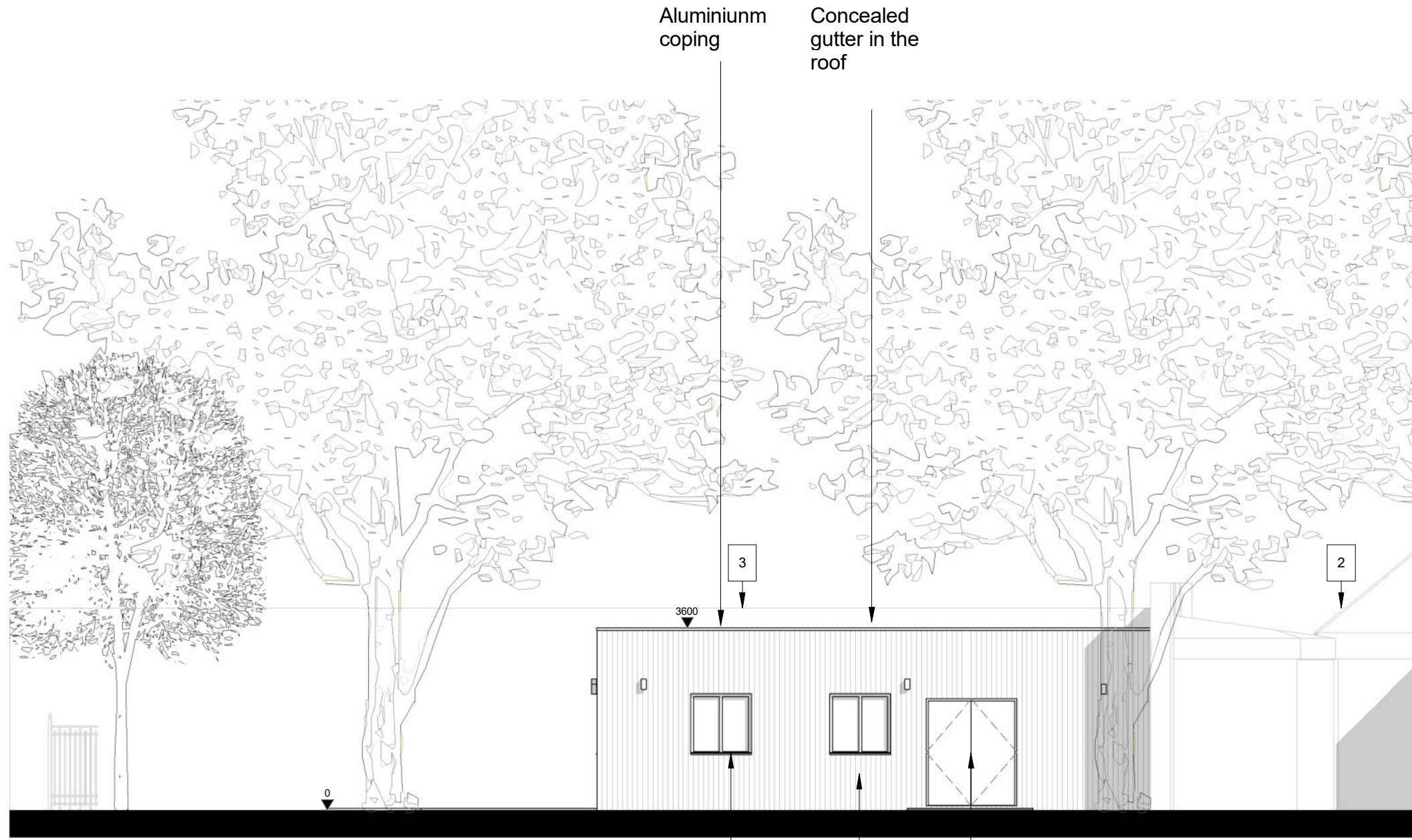


NOTES

CLADDING SURFACES COATED WITH AN ANTI-GRAFFITI GLAZE AND AS ALTERNATIVE MEASURES FOR REDUCING GRAFFITI WILL BE GROWING AN APPROPRIATE NON-INVASIVE CLIMBING PLANT UP THE WALL



- 1. EXISTING DUNDONAL SCHOOL BOUNDARY WALL
- 2. EXISTING DUNDONAL SCHOOL BUILDING
- 3. EXISTING FENCE OF TENNIS COURT

Aluminium windows frame      Aluminium door frame

Timber cladding



Proposed North Elevation from Dundonald Road

This page is intentionally left blank