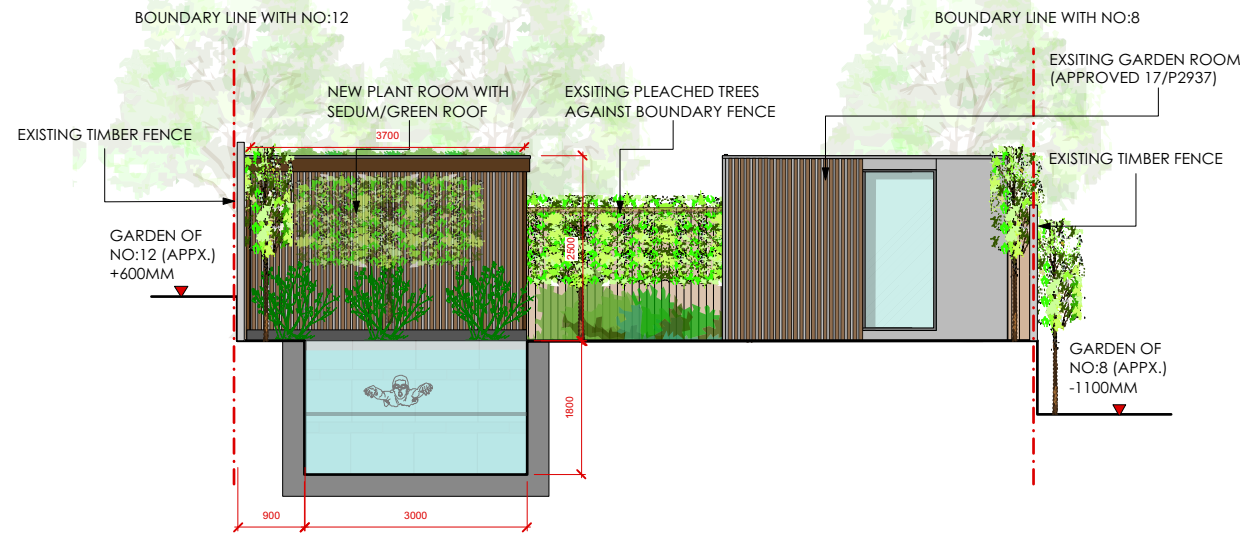
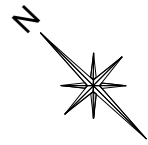


1 0 1 2 3 4 5

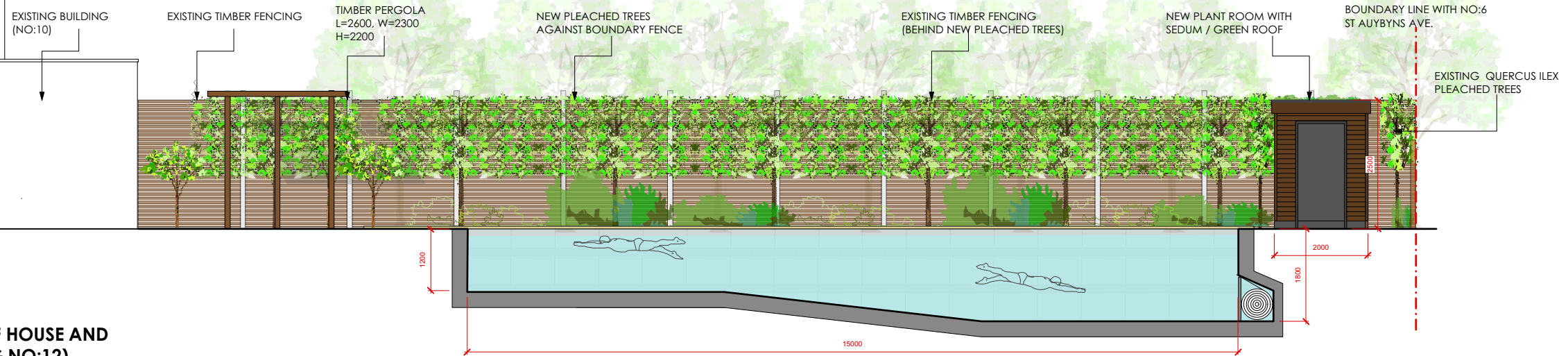


PROPOSED REAR GARDEN ELEVATION/SECTION

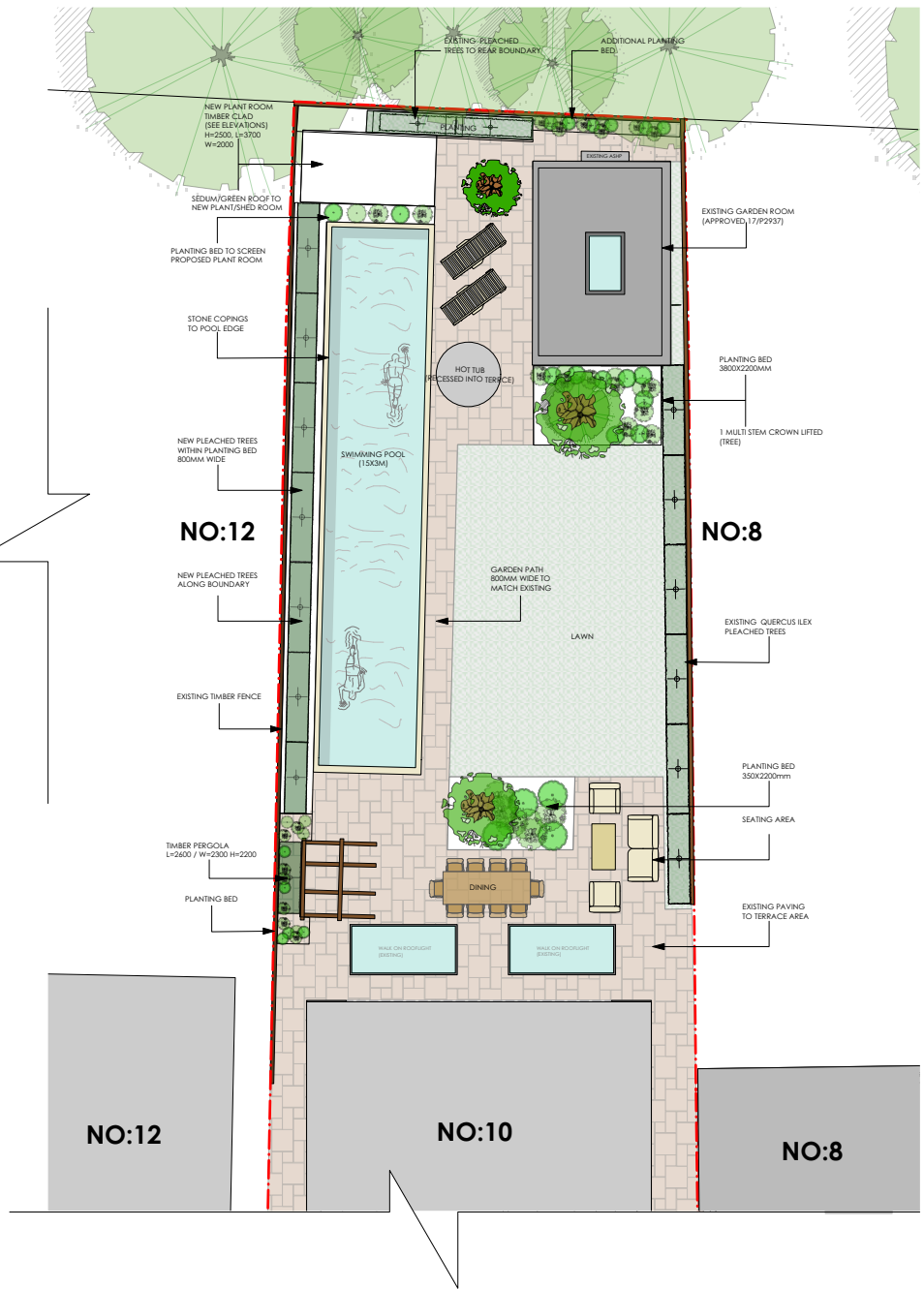


EXISTING GARDEN ELEVATION (FACING NO:8)

Page 249



PROPOSED SIDE ELEVATION OF HOUSE AND GARDEN IN CONTEXT (FACING NO:12)



NOTES:
DRAWING BASED UPON PROPOSED LANDSCAPE PLAN BY 'OUR LANDSCAPE DESIGN'

UNUSUAL RISKS IDENTIFIED IN CDM RISK ASSESSMENT:

Rev	Date	Revision	By
C	14/10/20	Update Incorporates landscaping design annotations (OLD LTD)	RF
B	15/10/20	General updates made	RF
A	13/10/20	General updates made	RF

JOB: 10 St Mary's Road, Wimbledon, London SW19

DWG: Proposed Garden Alterations

JOB NO: 601

DWG. NO: 601/P14

REVISION: C

SCALE: 1:50 @ A1

DATE: Oct 2020

DRAWN BY: RF

CHECKED BY: HH

DWG. STATUS: **PLANNING**

Do not scale this drawing

All dimensions to be checked on site

Holden Harper copyright reserved

HOLDEN HARPER
Architects | Engineers

26 High Street, Wimbledon
London SW19 5BY
Telephone: 020 8946 5502
Email: arch@holdenharper.co.uk

This page is intentionally left blank