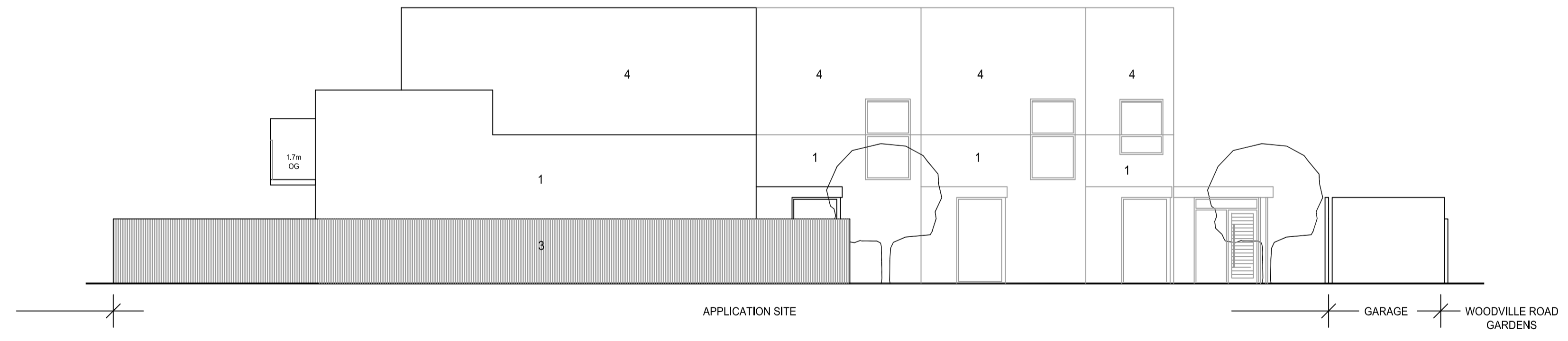


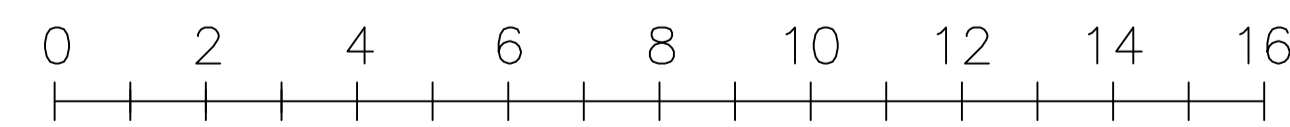
SOUTH WEST ELEVATION
 PROPOSED

NORTH WEST ELEVATION
 PROPOSED



SOUTH EAST ELEVATION
 PROPOSED

- MATERIALS (APPLIED TO ALL ELEVATIONS)
- 1: BRICK - WIENERBERGER SMEED DEAN ISLINGTON YELLOW RUSTICA STOCK
 - 2: GREY METAL FASCIAS (RAL 7021)
 - 3: 1.7m HIGH TIMBER FENCE
 - 4: DARK GREY TILES
- ALL BALCONIES: GLASS FRAMELESS BALUSTRADES
 ALL WINDOWS & FRENCH DOORS: GREY, POWDER COATED ALUMINIUM FRAMES (RAL 7021)
 FRONT DOORS: STAINED TIMBER



D RENDER & TIMBER CLADDING CHANGED TO BRICK	02-OCT-20
C REMOVE SECOND STOREY ACCOMMODATION REMOVE FIRST FLOOR ACCOMMODATION TO SOUTH WEST REDUCE HEIGHT OVERALL BY 1.9m	06-JUL-20
REV. DESCRIPTION:	BY: DATE:

SALT WHITE LTD
 19-20 GREAT SUTTON STREET
 LONDON
 EC1M 4AA

CLIENT:
 WOODVILLE MEWS LTD

PROJECT:
 LAND TO REAR OF
 2-16 WOODVILLE ROAD
 LONDON, SM4

TITLE:
 ELEVATIONS

SCALE: 1:100@A1	DATE: DEC-19	DRAWN: RS	CHECKED: RS
--------------------	-----------------	--------------	----------------

JOB NO: 0119 - P6-08
 REV: D

This page is intentionally left blank