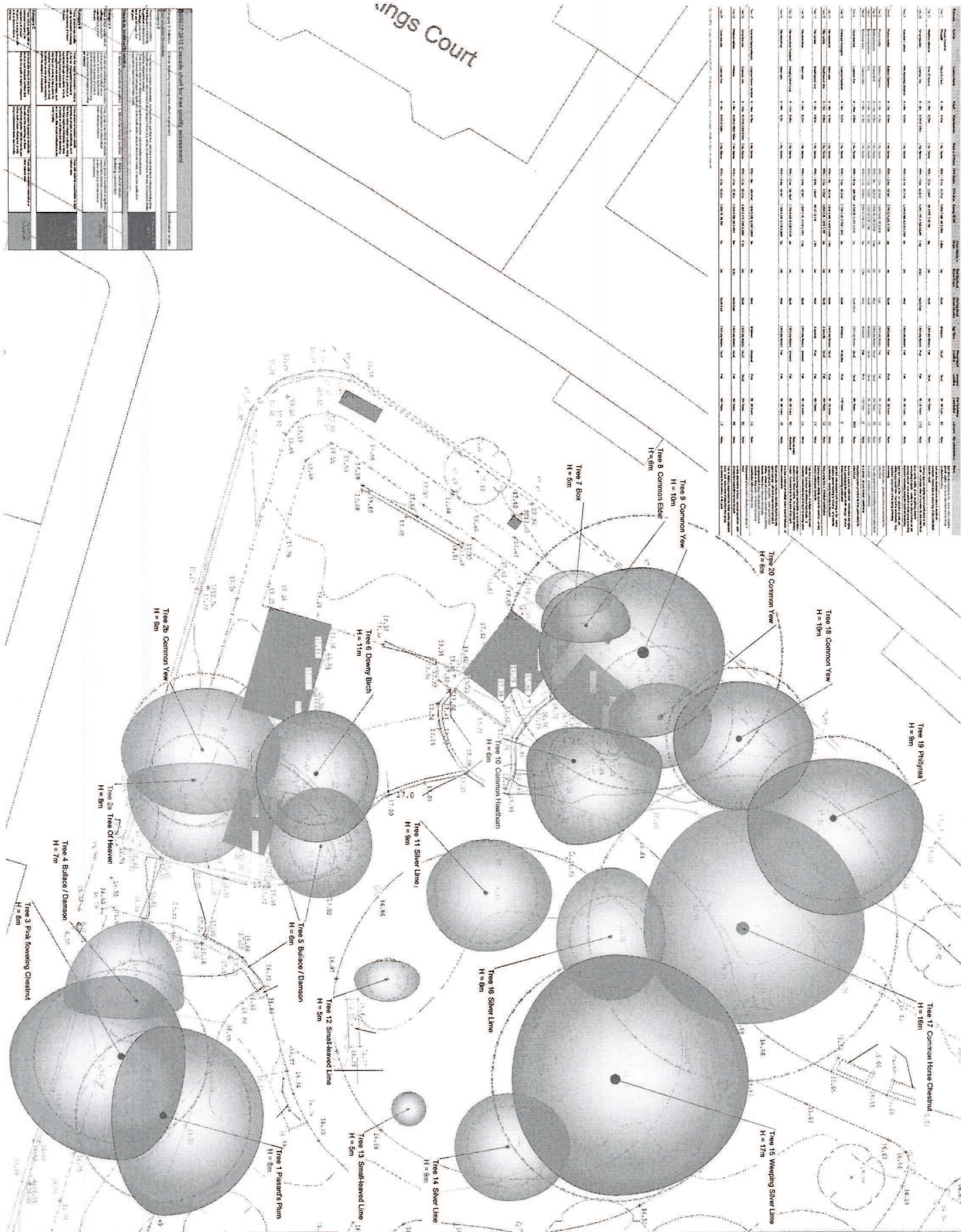


Tree ID	Species	Height (m)	DBH (cm)	Health	Notes
1	...	...	...	...	...
2	...	...	...	...	...
3	...	...	...	...	...
4	...	...	...	...	...
5	...	...	...	...	...
6	...	...	...	...	...
7	...	...	...	...	...
8	...	...	...	...	...
9	...	...	...	...	...
10	...	...	...	...	...
11	...	...	...	...	...
12	...	...	...	...	...
13	...	...	...	...	...
14	...	...	...	...	...
15	...	...	...	...	...
16	...	...	...	...	...
17	...	...	...	...	...
18	...	...	...	...	...
19	...	...	...	...	...
20	...	...	...	...	...
21	...	...	...	...	...
22	...	...	...	...	...
23	...	...	...	...	...
24	...	...	...	...	...
25	...	...	...	...	...
26	...	...	...	...	...
27	...	...	...	...	...
28	...	...	...	...	...
29	...	...	...	...	...
30	...	...	...	...	...

DRAWING MUST BE READ IN COLOUR



**South Park Gardens SW18**

Major Bowring Council

Client: K. CLEVER

Date: 22/08/15

Project: M2020307-01-001

Scale: 1:100

Author: M2020307-01-001

**BSS937/2012 Calculation of tree heights, diameters & Root Protection Areas**

Method: ...

Notes: ...

**Tree survey plan**

Scale: 1:100

North Arrow

**MANAGEMENT PLAN FOR THE PROTECTION OF TREES**

MANAGEMENT PLAN FOR THE PROTECTION OF TREES

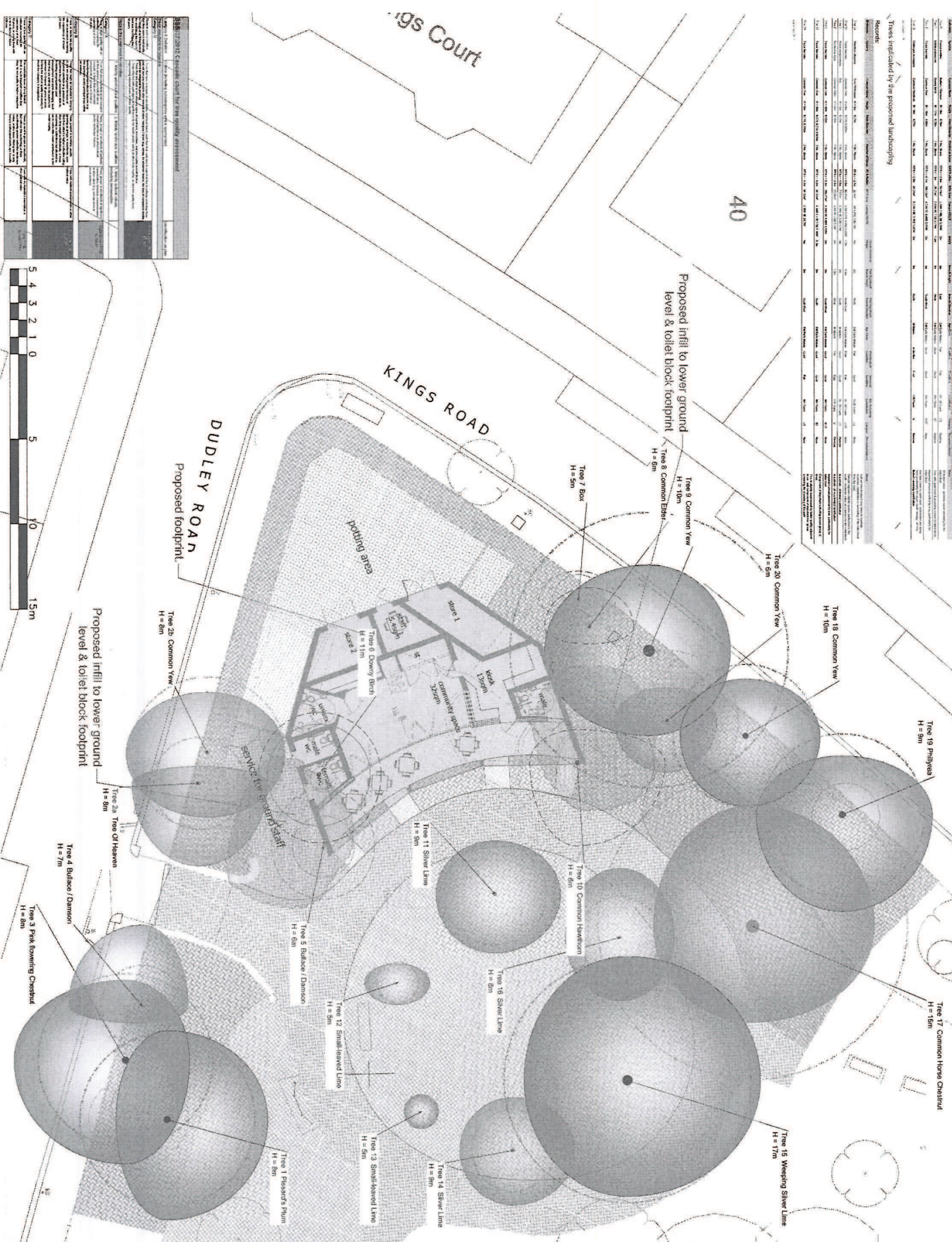
MANAGEMENT PLAN FOR THE PROTECTION OF TREES



Trees Impacted by proposed building footprint

Tree ID	Tree Name	Species	Height (m)	DBH (cm)	Health	Notes
T1	Tree 1	Platanus	11m	150	Good	Impacted by proposed building footprint
T2	Tree 2	Platanus	11m	150	Good	Impacted by proposed building footprint
T3	Tree 3	Platanus	11m	150	Good	Impacted by proposed building footprint
T4	Tree 4	Platanus	11m	150	Good	Impacted by proposed building footprint
T5	Tree 5	Platanus	11m	150	Good	Impacted by proposed building footprint
T6	Tree 6	Platanus	11m	150	Good	Impacted by proposed building footprint
T7	Tree 7	Platanus	11m	150	Good	Impacted by proposed building footprint
T8	Tree 8	Platanus	11m	150	Good	Impacted by proposed building footprint
T9	Tree 9	Platanus	11m	150	Good	Impacted by proposed building footprint
T10	Tree 10	Platanus	11m	150	Good	Impacted by proposed building footprint
T11	Tree 11	Platanus	11m	150	Good	Impacted by proposed building footprint
T12	Tree 12	Platanus	11m	150	Good	Impacted by proposed building footprint
T13	Tree 13	Platanus	11m	150	Good	Impacted by proposed building footprint
T14	Tree 14	Platanus	11m	150	Good	Impacted by proposed building footprint
T15	Tree 15	Platanus	11m	150	Good	Impacted by proposed building footprint
T16	Tree 16	Platanus	11m	150	Good	Impacted by proposed building footprint
T17	Tree 17	Platanus	11m	150	Good	Impacted by proposed building footprint
T18	Tree 18	Platanus	11m	150	Good	Impacted by proposed building footprint
T19	Tree 19	Platanus	11m	150	Good	Impacted by proposed building footprint
T20	Tree 20	Platanus	11m	150	Good	Impacted by proposed building footprint
T21	Tree 21	Platanus	11m	150	Good	Impacted by proposed building footprint
T22	Tree 22	Platanus	11m	150	Good	Impacted by proposed building footprint
T23	Tree 23	Platanus	11m	150	Good	Impacted by proposed building footprint
T24	Tree 24	Platanus	11m </tr			

DRAWING MUST BE READ IN COLOUR



Tree ID	Tree Name	Species	Height (m)	DBH (cm)	Health	Notes
T1	Tree 1	Platanus	11m	150	Good	Impacted by proposed building footprint
T2	Tree 2	Platanus	11m	150	Good	Impacted by proposed building footprint
T3	Tree 3	Platanus	11m	150	Good	Impacted by proposed building footprint
T4	Tree 4	Platanus	11m	150	Good	Impacted by proposed building footprint
T5	Tree 5	Platanus	11m	150	Good	Impacted by proposed building footprint
T6	Tree 6	Platanus	11m	150	Good	Impacted by proposed building footprint
T7	Tree 7	Platanus	11m	150	Good	Impacted by proposed building footprint
T8	Tree 8	Platanus	11m	150	Good	Impacted by proposed building footprint
T9	Tree 9	Platanus	11m	150	Good	Impacted by proposed building footprint
T10	Tree 10	Platanus	11m	150	Good	Impacted by proposed building footprint
T11	Tree 11	Platanus	11m	150	Good	Impacted by proposed building footprint
T12	Tree 12	Platanus	11m	150	Good	Impacted by proposed building footprint
T13	Tree 13	Platanus	11m	150	Good	Impacted by proposed building footprint
T14	Tree 14	Platanus	11m	150	Good	Impacted by proposed building footprint
T15	Tree 15	Platanus	11m	150	Good	Impacted by proposed building footprint
T16	Tree 16	Platanus	11m	150	Good	Impacted by proposed building footprint
T17	Tree 17	Platanus	11m	150	Good	Impacted by proposed building footprint
T18	Tree 18	Platanus	11m	150	Good	Impacted by proposed building footprint
T19	Tree 19	Platanus	11m	150	Good	Impacted by proposed building footprint
T20	Tree 20	Platanus	11m	150	Good	Impacted by proposed building footprint
T21	Tree 21	Platanus	11m	150	Good	Impacted by proposed building footprint
T22	Tree 22	Platanus	11m	150	Good	Impacted by proposed building footprint
T23	Tree 23	Platanus	11m	150	Good	Impacted by proposed building footprint
T24	Tree 24	Platanus	11m	150	Good	Impacted by proposed building footprint

BS5837:2015 Calculation of stem diameters & Root Protection Areas



**Notes:**

- The site plan shows the location of the proposed building footprint and the location of the trees to be protected.
- The trees to be protected are those that are within the Root Protection Area (RPA) of the proposed building footprint.
- The RPA is calculated based on the stem diameter of the tree and the species of the tree.
- The RPA is shown as a shaded area on the site plan.
- The trees within the RPA are those that are to be protected.
- The trees outside the RPA are those that are not to be protected.
- The trees within the RPA are those that are to be protected.
- The trees outside the RPA are those that are not to be protected.

Tree ID	Tree Name	Species	Height (m)	DBH (cm)	Health	Notes
T1	Tree 1	Platanus	11m	150	Good	Impacted by proposed building footprint
T2	Tree 2	Platanus	11m	150	Good	Impacted by proposed building footprint
T3	Tree 3	Platanus	11m	150	Good	Impacted by proposed building footprint
T4	Tree 4	Platanus	11m	150	Good	Impacted by proposed building footprint
T5	Tree 5	Platanus	11m	150	Good	Impacted by proposed building footprint
T6	Tree 6	Platanus	11m	150	Good	Impacted by proposed building footprint
T7	Tree 7	Platanus	11m	150	Good	Impacted by proposed building footprint
T8	Tree 8	Platanus	11m	150	Good	Impacted by proposed building footprint
T9	Tree 9	Platanus	11m	150	Good	Impacted by proposed building footprint
T10	Tree 10	Platanus	11m	150	Good	Impacted by proposed building footprint
T11	Tree 11	Platanus	11m	150	Good	Impacted by proposed building footprint
T12	Tree 12	Platanus	11m	150	Good	Impacted by proposed building footprint
T13	Tree 13	Platanus	11m	150	Good	Impacted by proposed building footprint
T14	Tree 14	Platanus	11m	150	Good	Impacted by proposed building footprint
T15	Tree 15	Platanus	11m	150	Good	Impacted by proposed building footprint
T16	Tree 16	Platanus	11m	150	Good	Impacted by proposed building footprint
T17	Tree 17	Platanus	11m	150	Good	Impacted by proposed building footprint
T18	Tree 18	Platanus	11m	150	Good	Impacted by proposed building footprint
T19	Tree 19	Platanus	11m	150	Good	Impacted by proposed building footprint
T20	Tree 20	Platanus	11m	150	Good	Impacted by proposed building footprint
T21	Tree 21	Platanus	11m	150	Good	Impacted by proposed building footprint
T22	Tree 22	Platanus	11m	150	Good	Impacted by proposed building footprint
T23	Tree 23	Platanus	11m	150	Good	Impacted by proposed building footprint
T24	Tree 24	Platanus	11m	150	Good	Impacted by proposed building footprint

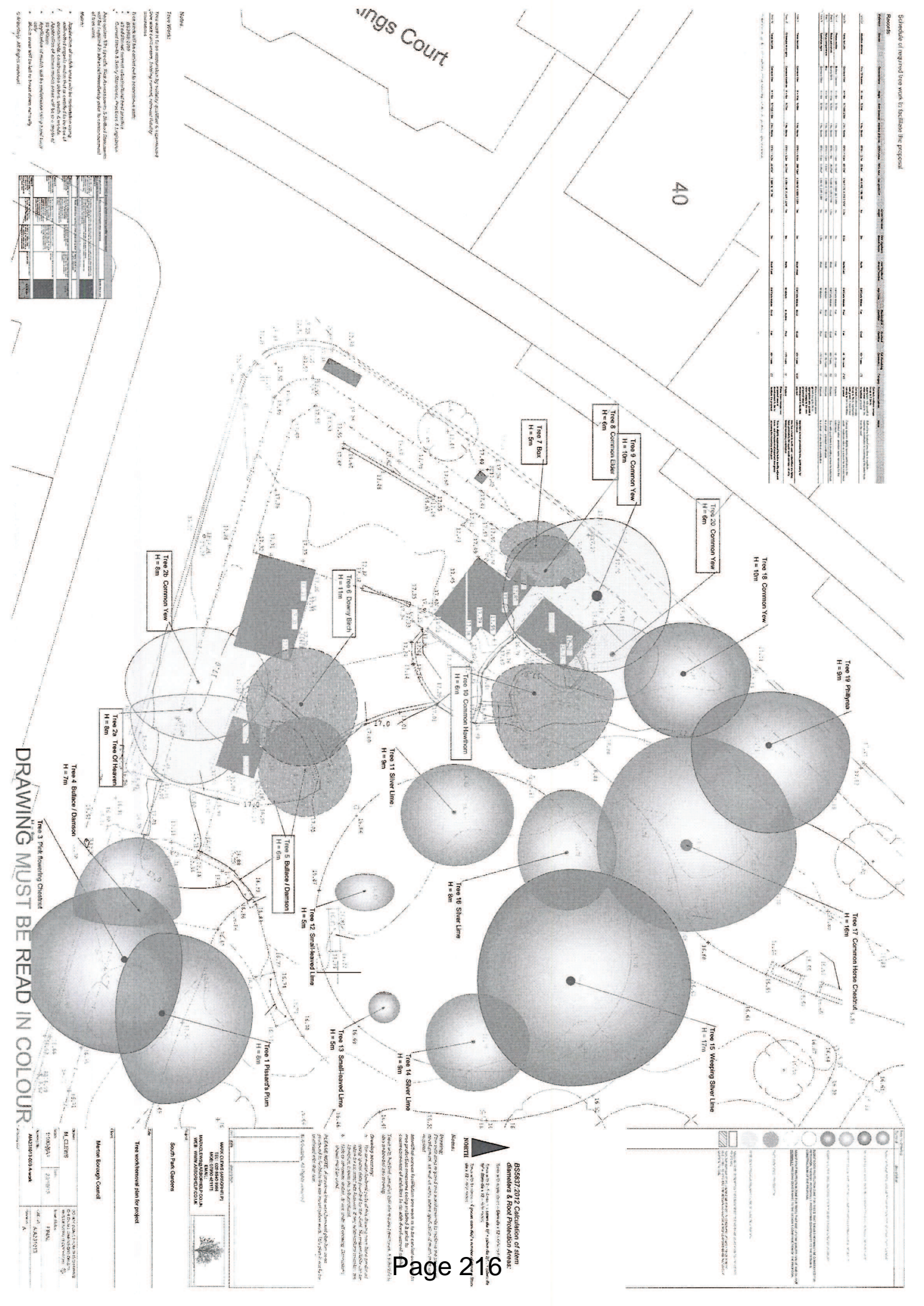






Records

Tree ID	Tree Name	Height (m)	Species	Health	Location	Notes
Tree 1	Platanus	9m	Platanus	Good	...	...
Tree 2	Common Yew	6m	Taxus	Good	...	...
Tree 3	Common Yew	6m	Taxus	Good	...	...
Tree 4	Common Yew	6m	Taxus	Good	...	...
Tree 5	Common Yew	6m	Taxus	Good	...	...
Tree 6	Common Yew	6m	Taxus	Good	...	...
Tree 7	Box	5m	Buxus	Good	...	...
Tree 8	Common Elder	6m	Sambucus	Good	...	...
Tree 9	Common Yew	10m	Taxus	Good	...	...
Tree 10	Common Hawthorn	6m	Crataegus	Good	...	...
Tree 11	Silver Birch	9m	Betula	Good	...	...
Tree 12	Small-leaved Lime	5m	Tilia	Good	...	...
Tree 13	Small-leaved Lime	5m	Tilia	Good	...	...
Tree 14	Silver Birch	9m	Betula	Good	...	...
Tree 15	Weeping Silver Birch	17m	Betula	Good	...	...
Tree 16	Silver Birch	8m	Betula	Good	...	...
Tree 17	Common Horse Chestnut	16m	Aesculus	Good	...	...
Tree 18	Common Yew	10m	Taxus	Good	...	...
Tree 19	Platanus	9m	Platanus	Good	...	...
Tree 20	Common Yew	6m	Taxus	Good	...	...
Tree 21	Common Yew	6m	Taxus	Good	...	...
Tree 22	Common Yew	6m	Taxus	Good	...	...
Tree 23	Common Yew	6m	Taxus	Good	...	...
Tree 24	Tree Of Heaven	6m	Parrotia	Good	...	...
Tree 25	Bullock / Danimon	7m	Quercus	Good	...	...
Tree 26	Pink Flowering Chestnut	5m	Aesculus	Good	...	...
Tree 27	Bullock / Danimon	6m	Quercus	Good	...	...
Tree 28	Pink Flowering Chestnut	5m	Aesculus	Good	...	...
Tree 29	Pink Flowering Chestnut	5m	Aesculus	Good	...	...
Tree 30	Pink Flowering Chestnut	5m	Aesculus	Good	...	...
Tree 31	Pink Flowering Chestnut	5m	Aesculus	Good	...	...
Tree 32	Pink Flowering Chestnut	5m	Aesculus	Good	...	...
Tree 33	Pink Flowering Chestnut	5m	Aesculus	Good	...	...
Tree 34	Pink Flowering Chestnut	5m	Aesculus	Good	...	...
Tree 35	Pink Flowering Chestnut	5m	Aesculus	Good	...	...
Tree 36	Pink Flowering Chestnut	5m	Aesculus	Good	...	...
Tree 37	Pink Flowering Chestnut	5m	Aesculus	Good	...	...
Tree 38	Pink Flowering Chestnut	5m	Aesculus	Good	...	...
Tree 39	Pink Flowering Chestnut	5m	Aesculus	Good	...	...
Tree 40	Pink Flowering Chestnut	5m	Aesculus	Good	...	...
Tree 41	Pink Flowering Chestnut	5m	Aesculus	Good	...	...
Tree 42	Pink Flowering Chestnut	5m	Aesculus	Good	...	...
Tree 43	Pink Flowering Chestnut	5m	Aesculus	Good	...	...
Tree 44	Pink Flowering Chestnut	5m	Aesculus	Good	...	...
Tree 45	Pink Flowering Chestnut	5m	Aesculus	Good	...	...
Tree 46	Pink Flowering Chestnut	5m	Aesculus	Good	...	...
Tree 47	Pink Flowering Chestnut	5m	Aesculus	Good	...	...
Tree 48	Pink Flowering Chestnut	5m	Aesculus	Good	...	...
Tree 49	Pink Flowering Chestnut	5m	Aesculus	Good	...	...
Tree 50	Pink Flowering Chestnut	5m	Aesculus	Good	...	...



**Notes:**

1. This drawing is to be read in conjunction with the Schedule of Impaired Tree Work to facilitate the proposal.
2. The drawing is to be read in conjunction with the Schedule of Impaired Tree Work to facilitate the proposal.
3. The drawing is to be read in conjunction with the Schedule of Impaired Tree Work to facilitate the proposal.
4. The drawing is to be read in conjunction with the Schedule of Impaired Tree Work to facilitate the proposal.
5. The drawing is to be read in conjunction with the Schedule of Impaired Tree Work to facilitate the proposal.
6. The drawing is to be read in conjunction with the Schedule of Impaired Tree Work to facilitate the proposal.
7. The drawing is to be read in conjunction with the Schedule of Impaired Tree Work to facilitate the proposal.
8. The drawing is to be read in conjunction with the Schedule of Impaired Tree Work to facilitate the proposal.
9. The drawing is to be read in conjunction with the Schedule of Impaired Tree Work to facilitate the proposal.
10. The drawing is to be read in conjunction with the Schedule of Impaired Tree Work to facilitate the proposal.

Tree ID	Tree Name	Height (m)	Species	Health	Location	Notes
Tree 1	Platanus	9m	Platanus	Good	...	...
Tree 2	Common Yew	6m	Taxus	Good	...	...
Tree 3	Common Yew	6m	Taxus	Good	...	...
Tree 4	Common Yew	6m	Taxus	Good	...	...
Tree 5	Common Yew	6m	Taxus	Good	...	...
Tree 6	Common Yew	6m	Taxus	Good	...	...
Tree 7	Box	5m	Buxus	Good	...	...
Tree 8	Common Elder	6m	Sambucus	Good	...	...
Tree 9	Common Yew	10m	Taxus	Good	...	...
Tree 10	Common Hawthorn	6m	Crataegus	Good	...	...
Tree 11	Silver Birch	9m	Betula	Good	...	...
Tree 12	Small-leaved Lime	5m	Tilia	Good	...	...
Tree 13	Small-leaved Lime	5m	Tilia	Good	...	...
Tree 14	Silver Birch	9m	Betula	Good	...	...
Tree 15	Weeping Silver Birch	17m	Betula	Good	...	...
Tree 16	Silver Birch	8m	Betula	Good	...	...
Tree 17	Common Horse Chestnut	16m	Aesculus	Good	...	...
Tree 18	Common Yew	10m	Taxus	Good	...	...
Tree 19	Platanus	9m	Platanus	Good	...	...
Tree 20	Common Yew	6m	Taxus	Good	...	...
Tree 21	Common Yew	6m	Taxus	Good	...	...
Tree 22	Common Yew	6m	Taxus	Good	...	...
Tree 23	Common Yew	6m	Taxus	Good	...	...
Tree 24	Tree Of Heaven	6m	Parrotia	Good	...	...
Tree 25	Bullock / Danimon	7m	Quercus	Good	...	...
Tree 26	Pink Flowering Chestnut	5m	Aesculus	Good	...	...
Tree 27	Bullock / Danimon	6m	Quercus	Good	...	...
Tree 28	Pink Flowering Chestnut	5m	Aesculus	Good	...	...
Tree 29	Pink Flowering Chestnut	5m	Aesculus	Good	...	...
Tree 30	Pink Flowering Chestnut	5m	Aesculus	Good	...	...
Tree 31	Pink Flowering Chestnut	5m	Aesculus	Good	...	...
Tree 32	Pink Flowering Chestnut	5m	Aesculus	Good	...	...
Tree 33	Pink Flowering Chestnut	5m	Aesculus	Good	...	...
Tree 34	Pink Flowering Chestnut	5m	Aesculus	Good	...	...
Tree 35	Pink Flowering Chestnut	5m	Aesculus	Good	...	...
Tree 36	Pink Flowering Chestnut	5m	Aesculus	Good	...	...
Tree 37	Pink Flowering Chestnut	5m	Aesculus	Good	...	...
Tree 38	Pink Flowering Chestnut	5m	Aesculus	Good	...	...
Tree 39	Pink Flowering Chestnut	5m	Aesculus	Good	...	...
Tree 40	Pink Flowering Chestnut	5m	Aesculus	Good	...	...
Tree 41	Pink Flowering Chestnut	5m	Aesculus	Good	...	...
Tree 42	Pink Flowering Chestnut	5m	Aesculus	Good	...	...
Tree 43	Pink Flowering Chestnut	5m	Aesculus	Good	...	...
Tree 44	Pink Flowering Chestnut	5m	Aesculus	Good	...	...
Tree 45	Pink Flowering Chestnut	5m	Aesculus	Good	...	...
Tree 46	Pink Flowering Chestnut	5m	Aesculus	Good	...	...
Tree 47	Pink Flowering Chestnut	5m	Aesculus	Good	...	...
Tree 48	Pink Flowering Chestnut	5m	Aesculus	Good	...	...
Tree 49	Pink Flowering Chestnut	5m	Aesculus	Good	...	...
Tree 50	Pink Flowering Chestnut	5m	Aesculus	Good	...	...

**DRAWING MUST BE READ IN COLOUR**

**South Park Gardens**

Tree work schedule plan for project

Master Ecology Council

Project Name: Kings Court

Client: [Name]

Project No: [Number]

Date: [Date]

Scale: 1:500

Author: [Name]

Check: [Name]

Approved: [Name]

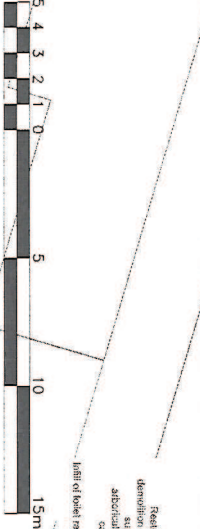
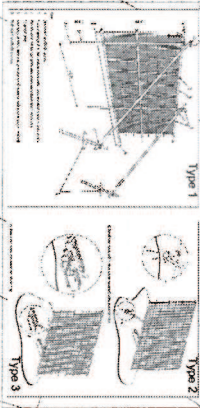


Tree No.	Tree Name	Species	DBH (cm)	Height (m)	Health	Notes
1	Tree 1	...	...	...	...	...
2	Tree 2	...	...	...	...	...
3	Tree 3	...	...	...	...	...
4	Tree 4	...	...	...	...	...
5	Tree 5	...	...	...	...	...
6	Tree 6	...	...	...	...	...
7	Tree 7	...	...	...	...	...
8	Tree 8	...	...	...	...	...
9	Tree 9	...	...	...	...	...
10	Tree 10	...	...	...	...	...
11	Tree 11	...	...	...	...	...
12	Tree 12	...	...	...	...	...
13	Tree 13	...	...	...	...	...
14	Tree 14	...	...	...	...	...
15	Tree 15	...	...	...	...	...
16	Tree 16	...	...	...	...	...
17	Tree 17	...	...	...	...	...
18	Tree 18	...	...	...	...	...
19	Tree 19	...	...	...	...	...
20	Tree 20	...	...	...	...	...
21	Tree 21	...	...	...	...	...
22	Tree 22	...	...	...	...	...
23	Tree 23	...	...	...	...	...
24	Tree 24	...	...	...	...	...
25	Tree 25	...	...	...	...	...
26	Tree 26	...	...	...	...	...
27	Tree 27	...	...	...	...	...
28	Tree 28	...	...	...	...	...
29	Tree 29	...	...	...	...	...
30	Tree 30	...	...	...	...	...

# Wings Court

Tree No.	Tree Name	Species	DBH (cm)	Height (m)	Health	Notes
1	Tree 1	...	...	...	...	...
2	Tree 2	...	...	...	...	...
3	Tree 3	...	...	...	...	...
4	Tree 4	...	...	...	...	...
5	Tree 5	...	...	...	...	...
6	Tree 6	...	...	...	...	...
7	Tree 7	...	...	...	...	...
8	Tree 8	...	...	...	...	...
9	Tree 9	...	...	...	...	...
10	Tree 10	...	...	...	...	...
11	Tree 11	...	...	...	...	...
12	Tree 12	...	...	...	...	...
13	Tree 13	...	...	...	...	...
14	Tree 14	...	...	...	...	...
15	Tree 15	...	...	...	...	...
16	Tree 16	...	...	...	...	...
17	Tree 17	...	...	...	...	...
18	Tree 18	...	...	...	...	...
19	Tree 19	...	...	...	...	...
20	Tree 20	...	...	...	...	...
21	Tree 21	...	...	...	...	...
22	Tree 22	...	...	...	...	...
23	Tree 23	...	...	...	...	...
24	Tree 24	...	...	...	...	...
25	Tree 25	...	...	...	...	...
26	Tree 26	...	...	...	...	...
27	Tree 27	...	...	...	...	...
28	Tree 28	...	...	...	...	...
29	Tree 29	...	...	...	...	...
30	Tree 30	...	...	...	...	...

Principles to be adopted for protective fencing:



Restricted working area. All demolition work within this will be supervised by the project architectural. Plant equipment cannot access this area. Infill of kerel ramps will comprise of a structural hoil.

BS5837 compliant tree protection fencing to follow construction detail embedded. Fencing to be placed in specified locations.

BS5837 compliant tree protection fencing to follow construction detail embedded. Fencing to be placed in specified locations.

BS5837 compliant tree protection fencing to follow construction detail embedded. Fencing to be placed in specified locations.

BS5837 compliant tree protection fencing to follow construction detail embedded. Fencing to be placed in specified locations.

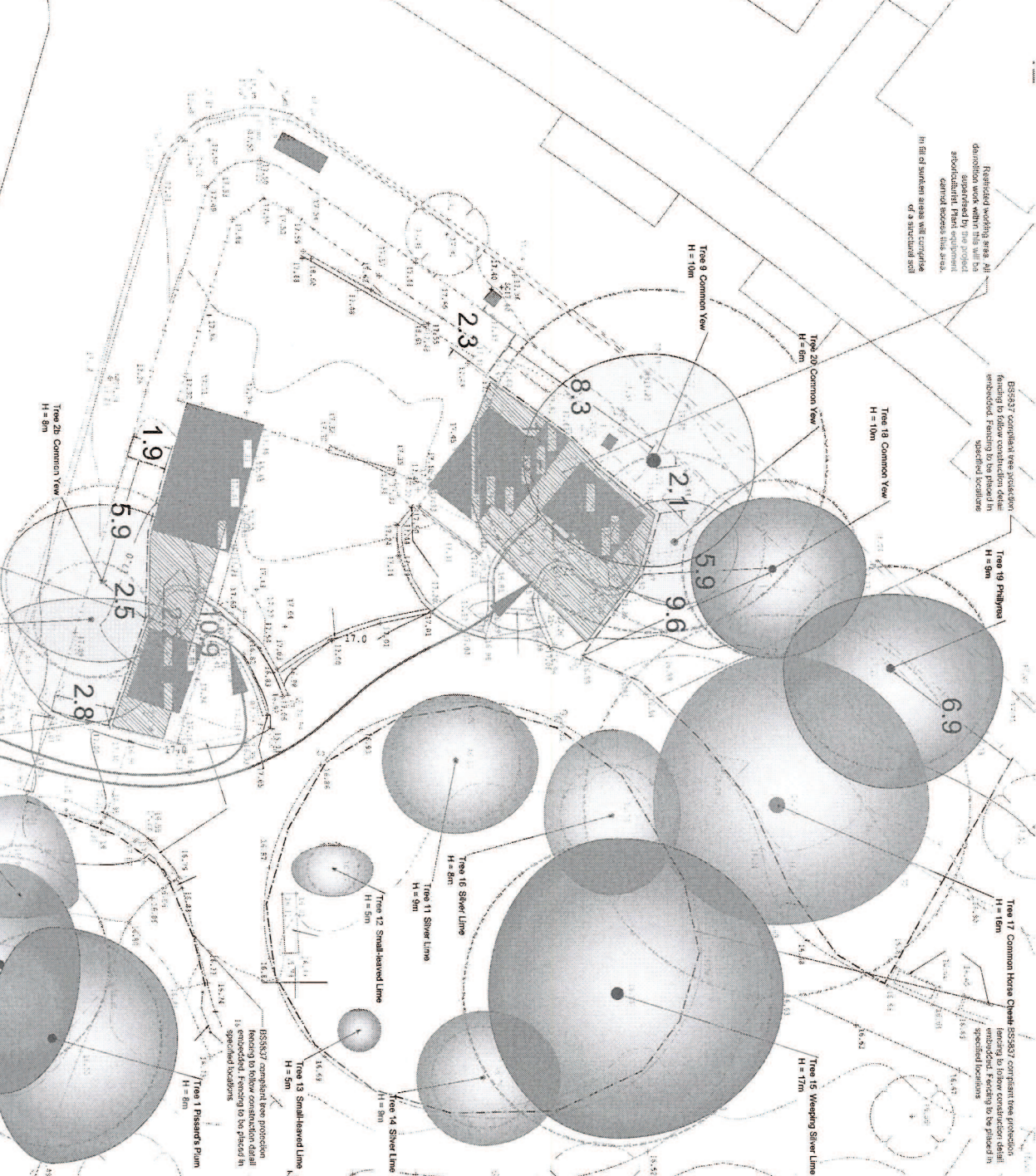
BS5837 compliant tree protection fencing to follow construction detail embedded. Fencing to be placed in specified locations.

BS5837 compliant tree protection fencing to follow construction detail embedded. Fencing to be placed in specified locations.

BS5837 compliant tree protection fencing to follow construction detail embedded. Fencing to be placed in specified locations.

BS5837 compliant tree protection fencing to follow construction detail embedded. Fencing to be placed in specified locations.

BS5837 compliant tree protection fencing to follow construction detail embedded. Fencing to be placed in specified locations.



**BS5837-2012 Calculation of stem diameters & Root Protection Areas:**

North

Scale: 1:100

Drawn by: [Name]

Checked by: [Name]

Date: [Date]

**South Park Gardens**

Tree Protection Plan for South Park Gardens

Client: [Name]

Address: [Address]

Project: [Project Name]

Drawn by: [Name]

Checked by: [Name]

Date: [Date]

DRAWING MUST BE READ IN COLOUR







**1. Aerial-ground interface:**

- 1.1. Aerial-ground interface: The aerial-ground interface is the interface between the aerial and ground components of a system. It is the point where the aerial and ground components meet and interact. The aerial-ground interface is a critical part of the system and must be designed and implemented carefully to ensure the system operates reliably and efficiently.
- 1.2. Aerial-ground interface: The aerial-ground interface is the interface between the aerial and ground components of a system. It is the point where the aerial and ground components meet and interact. The aerial-ground interface is a critical part of the system and must be designed and implemented carefully to ensure the system operates reliably and efficiently.
- 1.3. Aerial-ground interface: The aerial-ground interface is the interface between the aerial and ground components of a system. It is the point where the aerial and ground components meet and interact. The aerial-ground interface is a critical part of the system and must be designed and implemented carefully to ensure the system operates reliably and efficiently.

**2. Access facilitation:**

- 2.1. Access facilitation: Access facilitation is the process of providing access to a system or component. It involves designing and implementing mechanisms that allow users to interact with the system and its components. Access facilitation is a key part of the user experience and must be designed and implemented carefully to ensure the system is easy to use and accessible to all users.
- 2.2. Access facilitation: Access facilitation is the process of providing access to a system or component. It involves designing and implementing mechanisms that allow users to interact with the system and its components. Access facilitation is a key part of the user experience and must be designed and implemented carefully to ensure the system is easy to use and accessible to all users.
- 2.3. Access facilitation: Access facilitation is the process of providing access to a system or component. It involves designing and implementing mechanisms that allow users to interact with the system and its components. Access facilitation is a key part of the user experience and must be designed and implemented carefully to ensure the system is easy to use and accessible to all users.

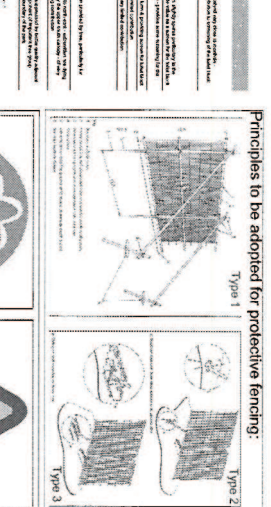
**3. Records:**

Item	Description	Quantity	Unit	Notes
1	Access facilitation	1	unit	
2	Access facilitation	1	unit	
3	Access facilitation	1	unit	
4	Access facilitation	1	unit	
5	Access facilitation	1	unit	
6	Access facilitation	1	unit	
7	Access facilitation	1	unit	
8	Access facilitation	1	unit	
9	Access facilitation	1	unit	
10	Access facilitation	1	unit	

**4. Free Protectional Finishing detail:**

- 4.1. Free Protectional Finishing detail: This detail shows the connection between the aerial and ground components of a system. It is designed to provide a secure and reliable connection that can withstand the forces and stresses of the system. The detail is shown in a perspective view, highlighting the various components and their assembly.
- 4.2. Free Protectional Finishing detail: This detail shows the connection between the aerial and ground components of a system. It is designed to provide a secure and reliable connection that can withstand the forces and stresses of the system. The detail is shown in a perspective view, highlighting the various components and their assembly.
- 4.3. Free Protectional Finishing detail: This detail shows the connection between the aerial and ground components of a system. It is designed to provide a secure and reliable connection that can withstand the forces and stresses of the system. The detail is shown in a perspective view, highlighting the various components and their assembly.

**Principles to be adopted for protective fencing:**



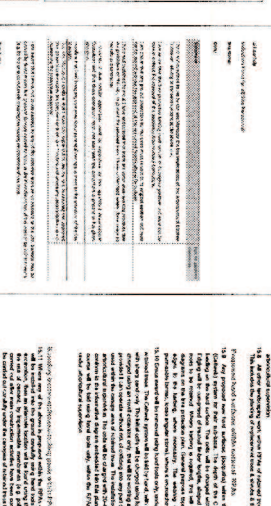
**5. Protectional Signage:**

Item	Description	Quantity	Unit	Notes
1	Protectional Signage	1	unit	
2	Protectional Signage	1	unit	
3	Protectional Signage	1	unit	
4	Protectional Signage	1	unit	
5	Protectional Signage	1	unit	
6	Protectional Signage	1	unit	
7	Protectional Signage	1	unit	
8	Protectional Signage	1	unit	
9	Protectional Signage	1	unit	
10	Protectional Signage	1	unit	

**6. Protectional Signage:**

- 6.1. Protectional Signage: This section details the requirements for the signage used in the protective fencing. It includes specifications for the size, color, and placement of the signs, as well as the materials used for the signs. The signage is designed to be highly visible and legible, ensuring that the purpose of the fencing is clear to all users.
- 6.2. Protectional Signage: This section details the requirements for the signage used in the protective fencing. It includes specifications for the size, color, and placement of the signs, as well as the materials used for the signs. The signage is designed to be highly visible and legible, ensuring that the purpose of the fencing is clear to all users.
- 6.3. Protectional Signage: This section details the requirements for the signage used in the protective fencing. It includes specifications for the size, color, and placement of the signs, as well as the materials used for the signs. The signage is designed to be highly visible and legible, ensuring that the purpose of the fencing is clear to all users.

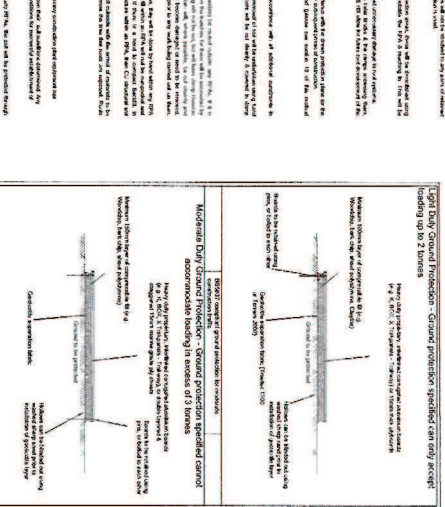
**7. Protectional Signage:**



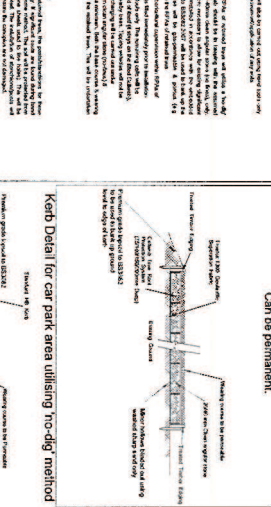
**8. Protectional Signage:**

Item	Description	Quantity	Unit	Notes
1	Protectional Signage	1	unit	
2	Protectional Signage	1	unit	
3	Protectional Signage	1	unit	
4	Protectional Signage	1	unit	
5	Protectional Signage	1	unit	
6	Protectional Signage	1	unit	
7	Protectional Signage	1	unit	
8	Protectional Signage	1	unit	
9	Protectional Signage	1	unit	
10	Protectional Signage	1	unit	

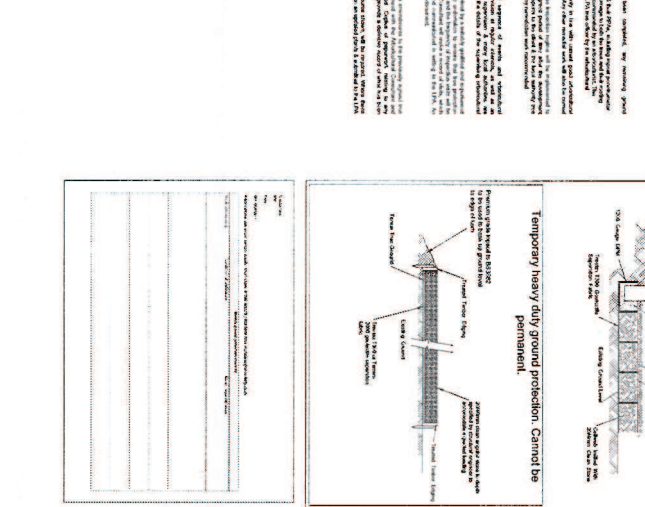
**9. Heavy duty ground protection detail:**



**10. Heavy duty ground protection detail:**



**11. Heavy duty ground protection detail:**



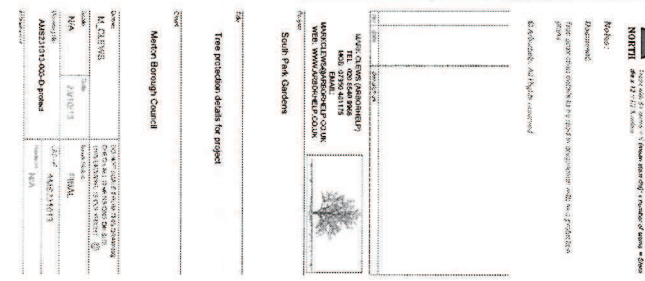
**12. Heavy duty ground protection detail:**



**13. Heavy duty ground protection detail:**



**14. Heavy duty ground protection detail:**





This page is intentionally left blank