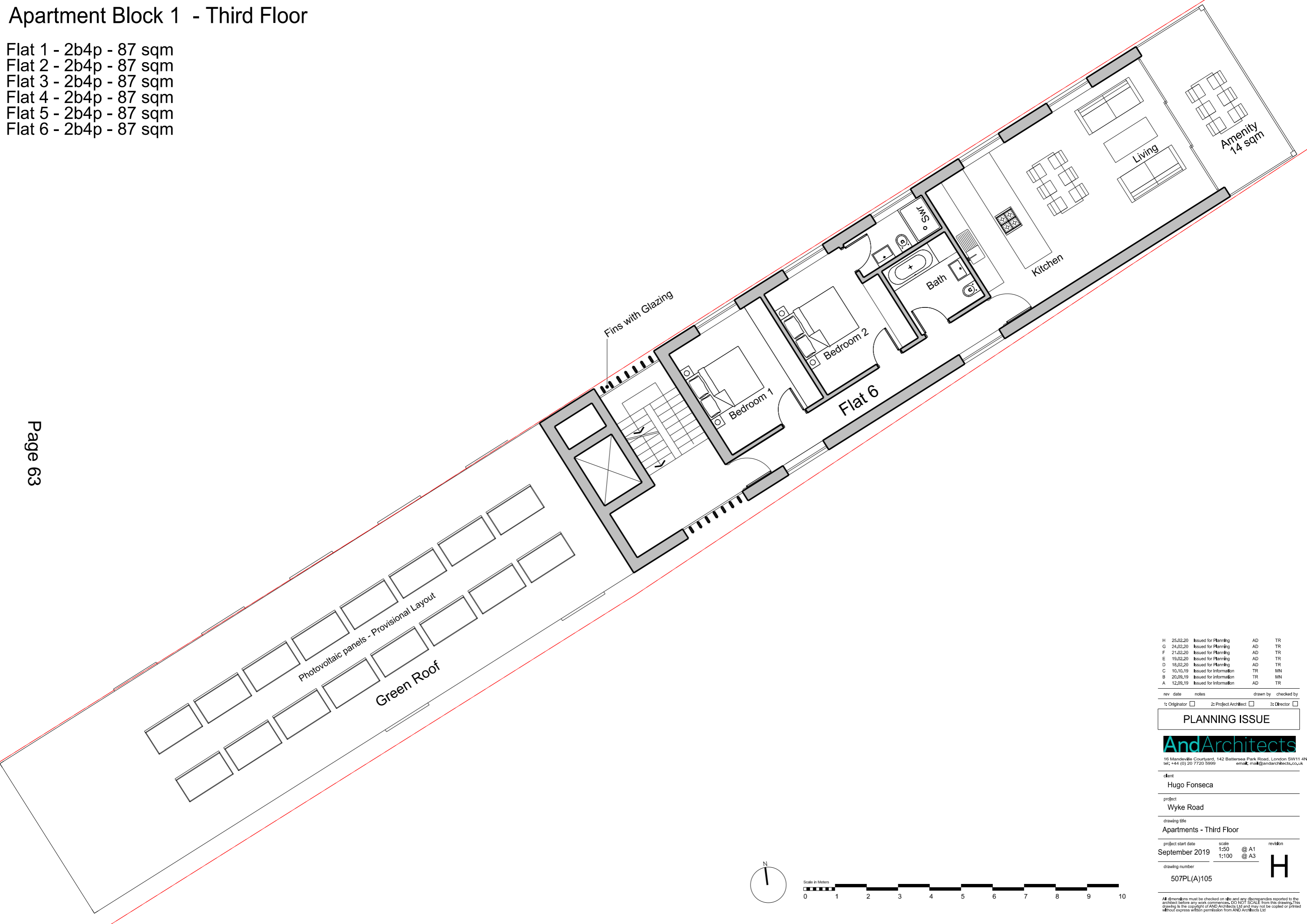


Apartment Block 1 - Third Floor

- Flat 1 - 2b4p - 87 sqm
- Flat 2 - 2b4p - 87 sqm
- Flat 3 - 2b4p - 87 sqm
- Flat 4 - 2b4p - 87 sqm
- Flat 5 - 2b4p - 87 sqm
- Flat 6 - 2b4p - 87 sqm



Page 63

rev	date	notes	drawn by	checked by
H	25.02.20	Issued for Planning	AD	TR
G	24.02.20	Issued for Planning	AD	TR
F	21.02.20	Issued for Planning	AD	TR
E	19.02.20	Issued for Planning	AD	TR
D	18.02.20	Issued for Planning	AD	TR
C	10.10.19	Issued for Information	TR	MN
B	20.09.19	Issued for Information	TR	MN
A	12.09.19	Issued for Information	AD	TR

rev	date	notes	drawn by	checked by
1:		Originator	<input type="checkbox"/>	
2:		Project Architect	<input type="checkbox"/>	
3:		Director	<input type="checkbox"/>	

PLANNING ISSUE

AndArchitects
 16 Mandeville Courtyard, 142 Battersea Park Road, London SW11 4NF
 tel: +44 (0) 20 7720 5999 email: ma@andarchitects.co.uk

client
 Hugo Fonseca

project
 Wyke Road

drawing title
 Apartments - Third Floor

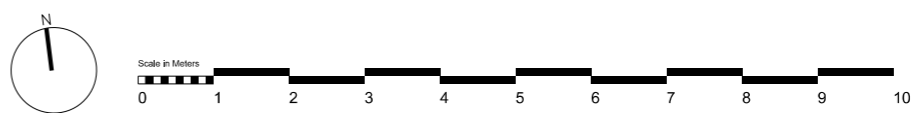
project start date
 September 2019

scale
 1:50 @ A1
 1:100 @ A3

revision
H

drawing number
 507PL(A)105

All dimensions must be checked on site and any discrepancies reported to the architect before any work commences. DO NOT SCALE from this drawing. This drawing is the copyright of AND Architects Ltd and may not be copied or printed without express written permission from AND Architects Ltd.



This page is intentionally left blank