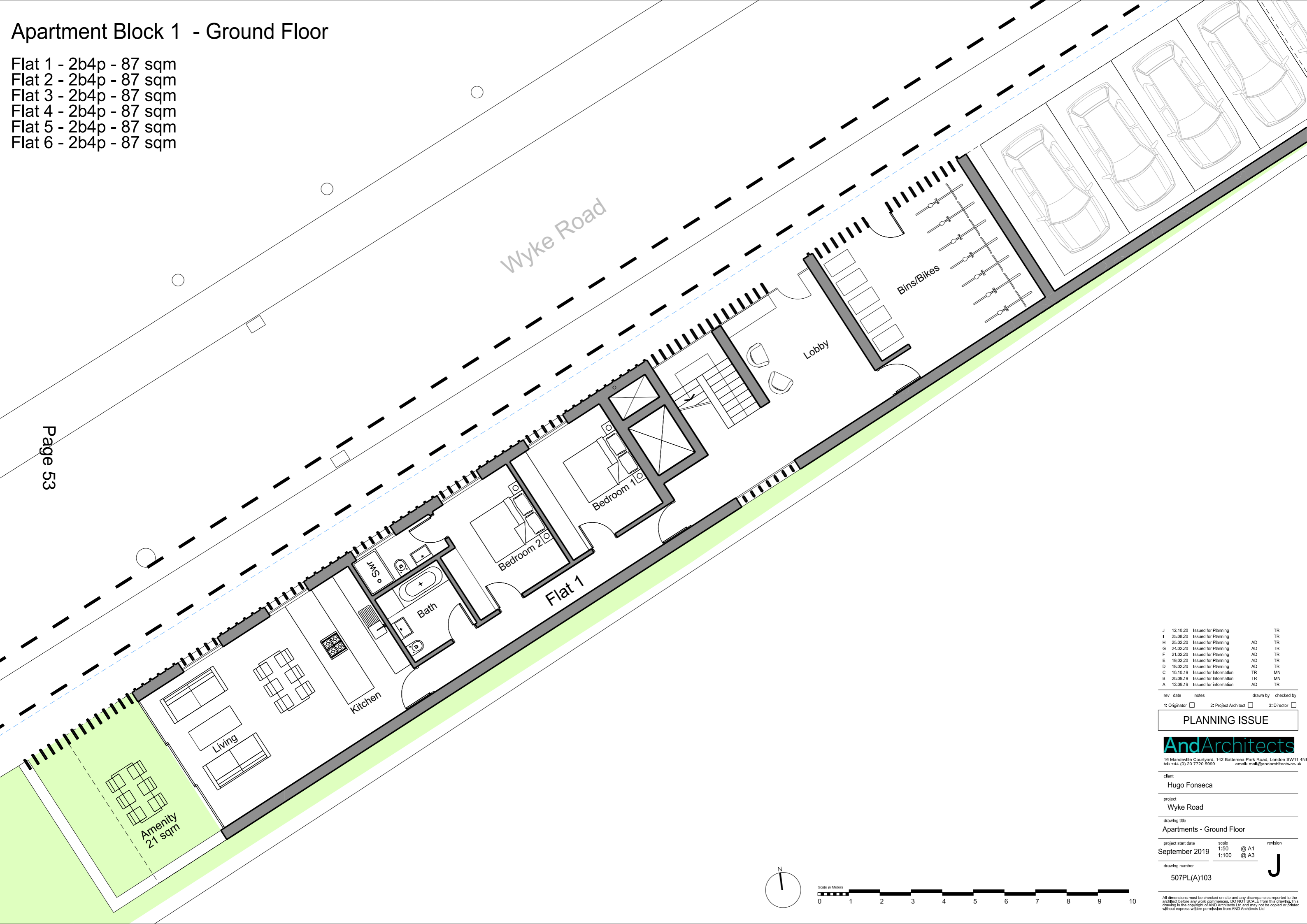


# Apartment Block 1 - Ground Floor

- Flat 1 - 2b4p - 87 sqm
- Flat 2 - 2b4p - 87 sqm
- Flat 3 - 2b4p - 87 sqm
- Flat 4 - 2b4p - 87 sqm
- Flat 5 - 2b4p - 87 sqm
- Flat 6 - 2b4p - 87 sqm

Page 53



rev	date	notes	drawn by	checked by
J	12.10.20	Issued for Planning		TR
I	25.08.20	Issued for Planning		TR
H	25.02.20	Issued for Planning	AD	TR
G	24.02.20	Issued for Planning	AD	TR
F	21.02.20	Issued for Planning	AD	TR
E	19.02.20	Issued for Planning	AD	TR
D	18.02.20	Issued for Planning	AD	TR
C	10.10.19	Issued for Information	TR	MN
B	20.09.19	Issued for Information	TR	MN
A	12.09.19	Issued for information	AD	TR

rev	date	notes	drawn by	checked by
1:		Originator	<input type="checkbox"/>	
2:		Project Architect	<input type="checkbox"/>	
3:		Director	<input type="checkbox"/>	

**PLANNING ISSUE**

**AndArchitects**

16 Mandeville Courtyard, 142 Battersea Park Road, London SW11 4NL  
 tel: +44 (0) 20 7720 5999 email: mail@andarchitects.co.uk

client  
 Hugo Fonseca

project  
 Wyke Road

drawing title  
 Apartments - Ground Floor

project start date  
 September 2019

scale  
 1:50 @ A1  
 1:100 @ A3

revision  
**J**

drawing number  
 507PL(A)103

All dimensions must be checked on site and any discrepancies reported to the architect before any work commences. DO NOT SCALE from this drawing. This drawing is the copyright of AND Architects Ltd and may not be copied or printed without express written permission from AND Architects Ltd.

This page is intentionally left blank