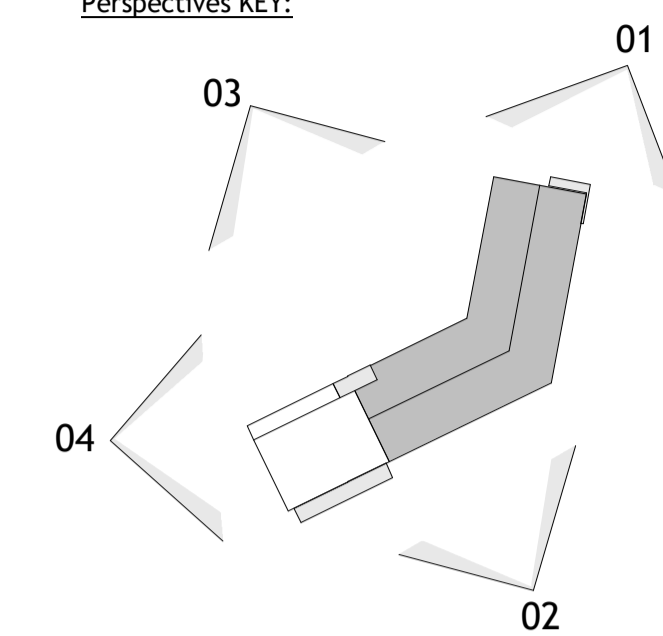


Notes  
Contractors must verify all dimensions on site before commencing any work on shop drawings Do not scale from this drawing  
McBains Ltd copyright

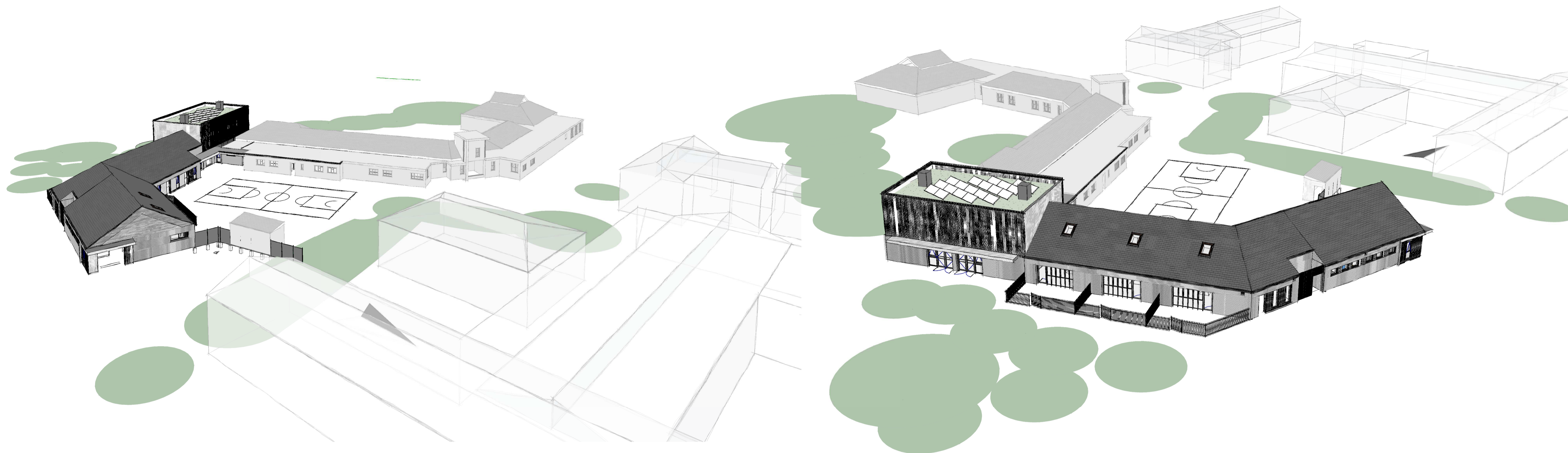
BM Transmittal Disclaimer  
McBains Ltd makes no express or implied warranties with respect to the character, function, or capabilities of the data (inclusive of 3rd party data incorporated within), or the suitability of the data for any particular purpose beyond those originally intended by McBains Ltd. please refer to our standard terms and conditions for further details.

Perspectives KEY:



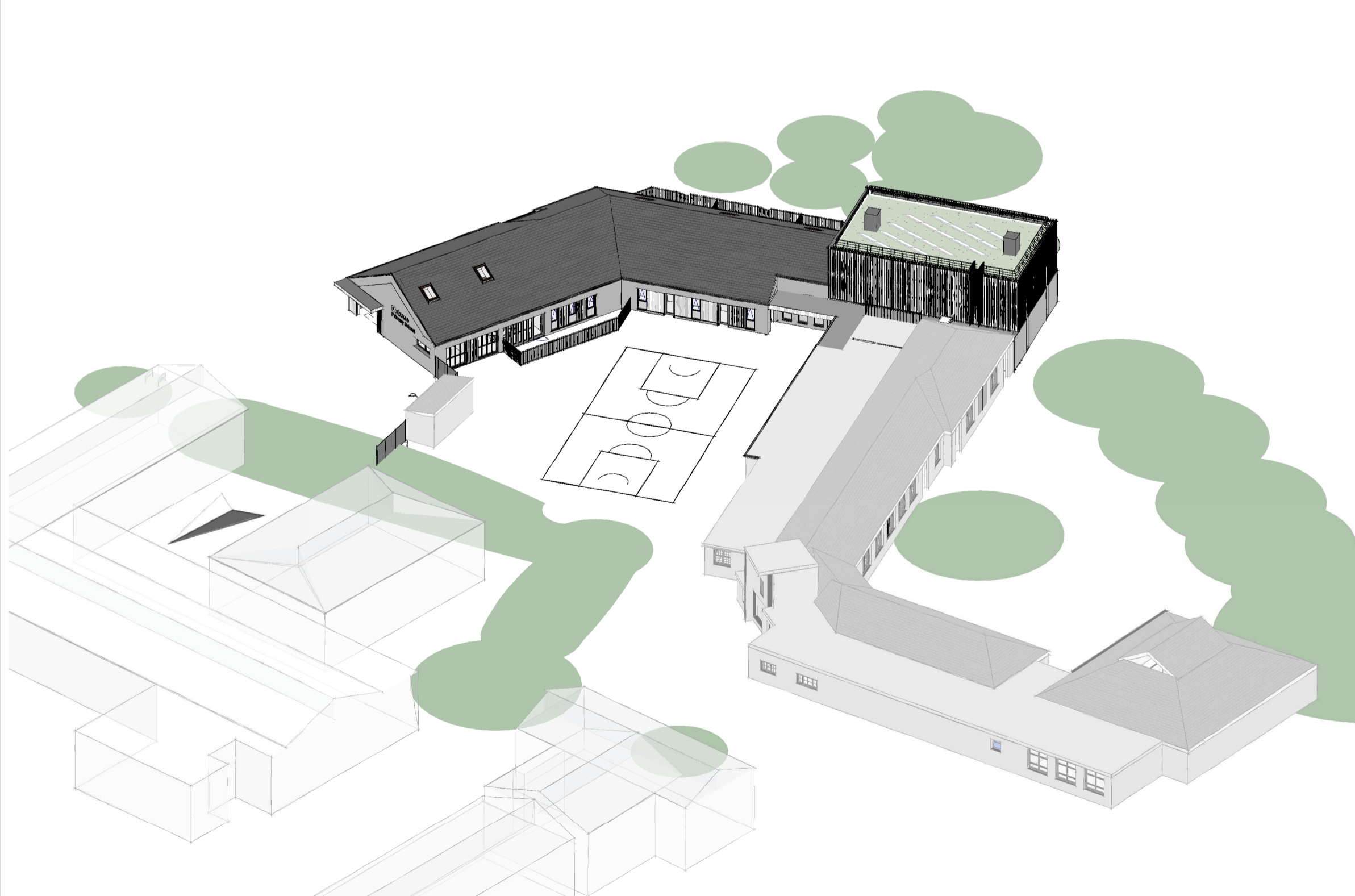
KEY:

- Site Application Boundary
- Extent of Works

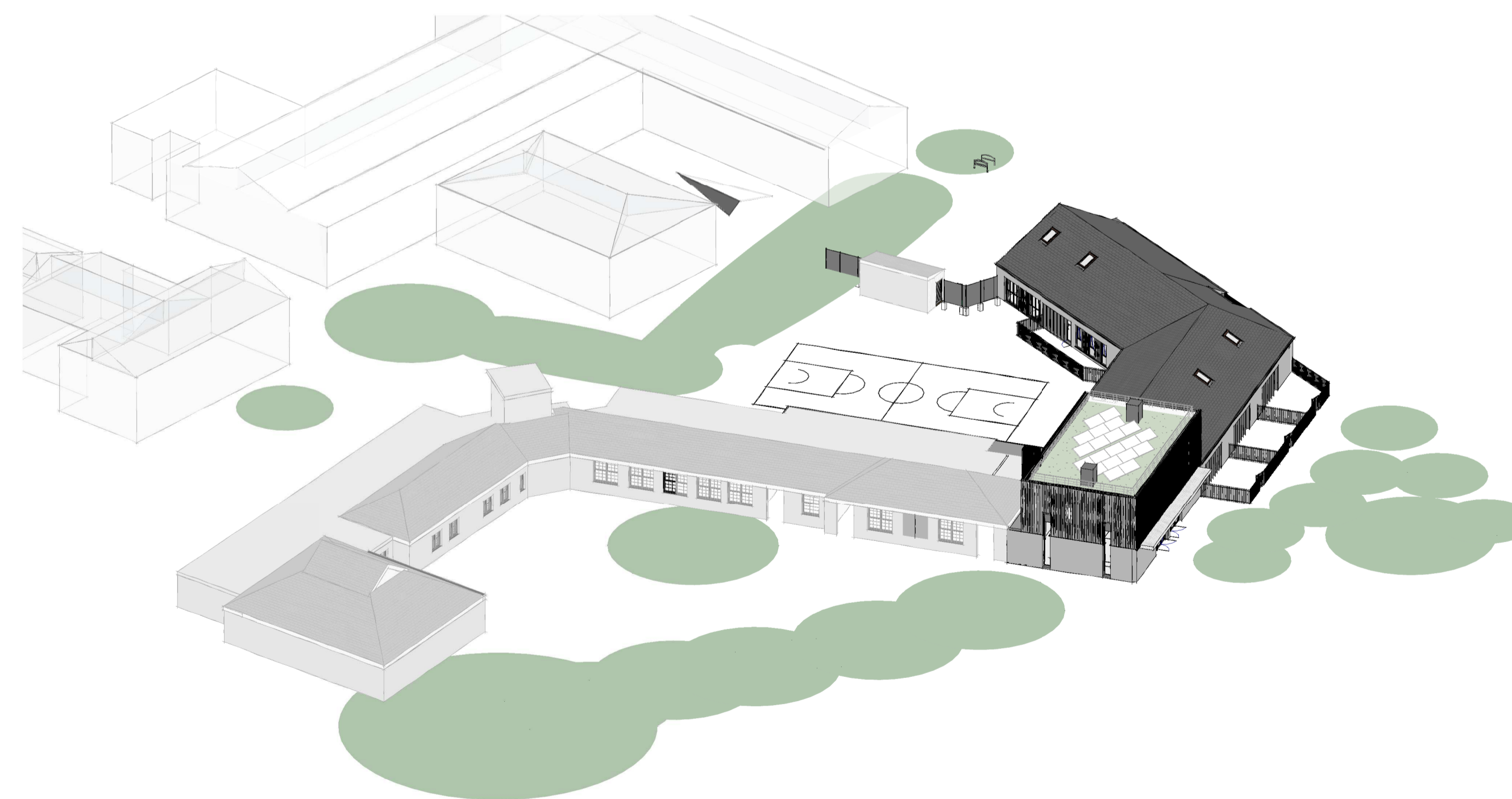


Perspective View 01 - North East view

Perspective View 02 - South East view



Perspective View 03 - North view



Perspective View 04 - West view

P7	Updates from DRP incorporated	24.08.20
P6	Planning Submission	19.06.20
P5	Planning Issue	04.06.20
P4	Draft Planning Issue	02.06.20
P3	Issued for Information	26.05.20
P2	Issued for Information	06.05.20
P1	Internal Review	01.04.20

Revision	Amendment	Date
CI	MEPB	MB
Drawn by	Reviewed by	Approved by
61207	APR 20	As indicated @ A1
MCB Number	Date Created	Scale @ A1

**McBains**

McBains Ltd  
5th Fl, 26 Finsbury Square London EC2A 1DS  
+44 (0)20 7786 7900 mcbains.co.uk

Client  
Melrose School

Project  
MELROSE SCHOOL  
Church Rd, Mitcham CR4 3BE

Drawing Title  
AERIAL VIEWS

**ARCHITECTURE**

Drawing / Document Reference							Status
MEL01	MCB	XX	XX	DR	A	0150	D5 - P7
Project Idn	Originator	Zone	Level	Type	Discipline	Number	Suitability Revision

This page is intentionally left blank