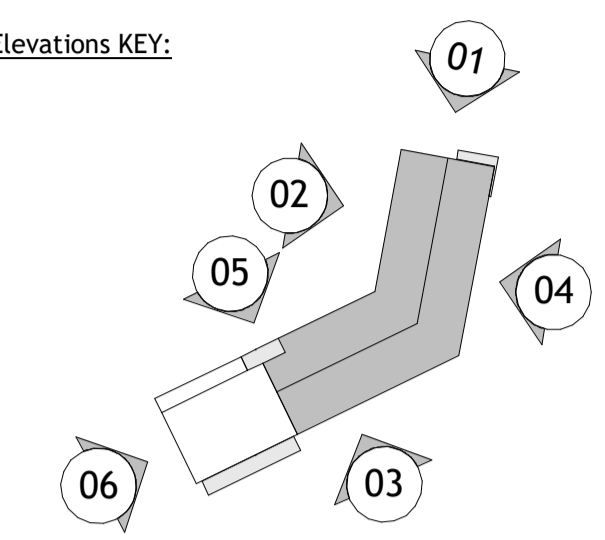


Notes  
Contractors must verify all dimensions on site before commencing any work on shop drawings Do not scale from this drawing  
McBains Ltd copyright

BM Transmittal Disclaimer  
McBains Ltd makes no express or implied warranties with respect to the character, function, or capabilities of the data (inclusive of 3rd party data incorporated within), or the suitability of the data for any particular purpose beyond those originally intended by McBains Ltd. please refer to our standard terms and conditions for further details.

Elevations KEY:

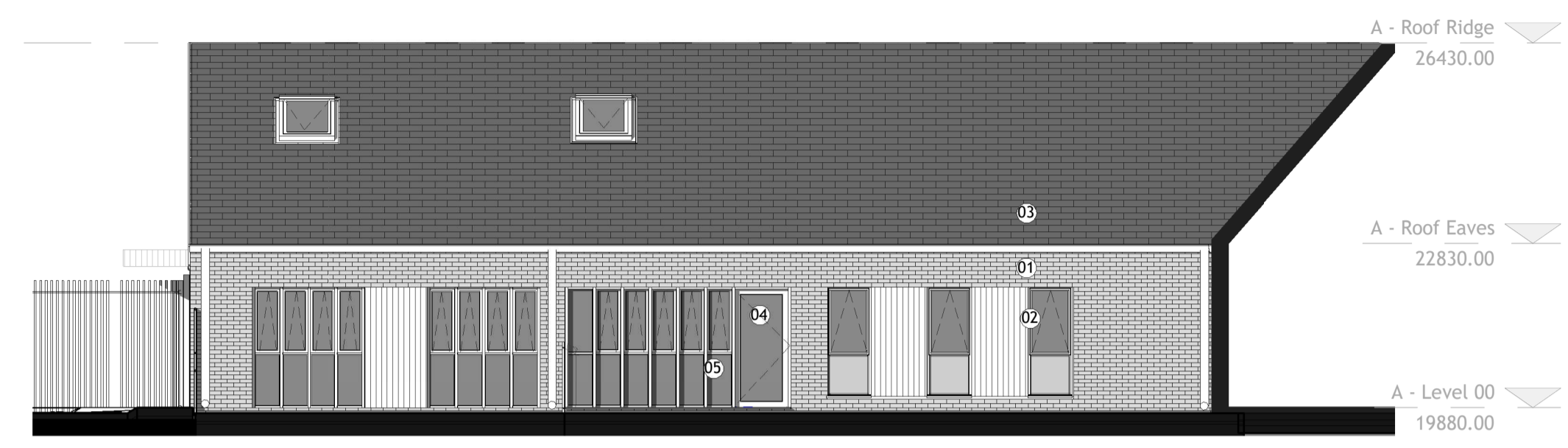


Building Materials KEY:

- 01 External walls: Red / Brown facing brick in stretcher bond with smaller panels in English / Flemish bond.
- 02 Wall Cladding: Timber panel cladding Thermowood or similar.
- 03 Roof: Terracotta Pantile
- 04 Glazed openings: Aluminum curtain walling system
- 05 Solar Shading solution: Timber fins.



1 North East Elevation  
1 : 100



2 West Elevation  
1 : 100

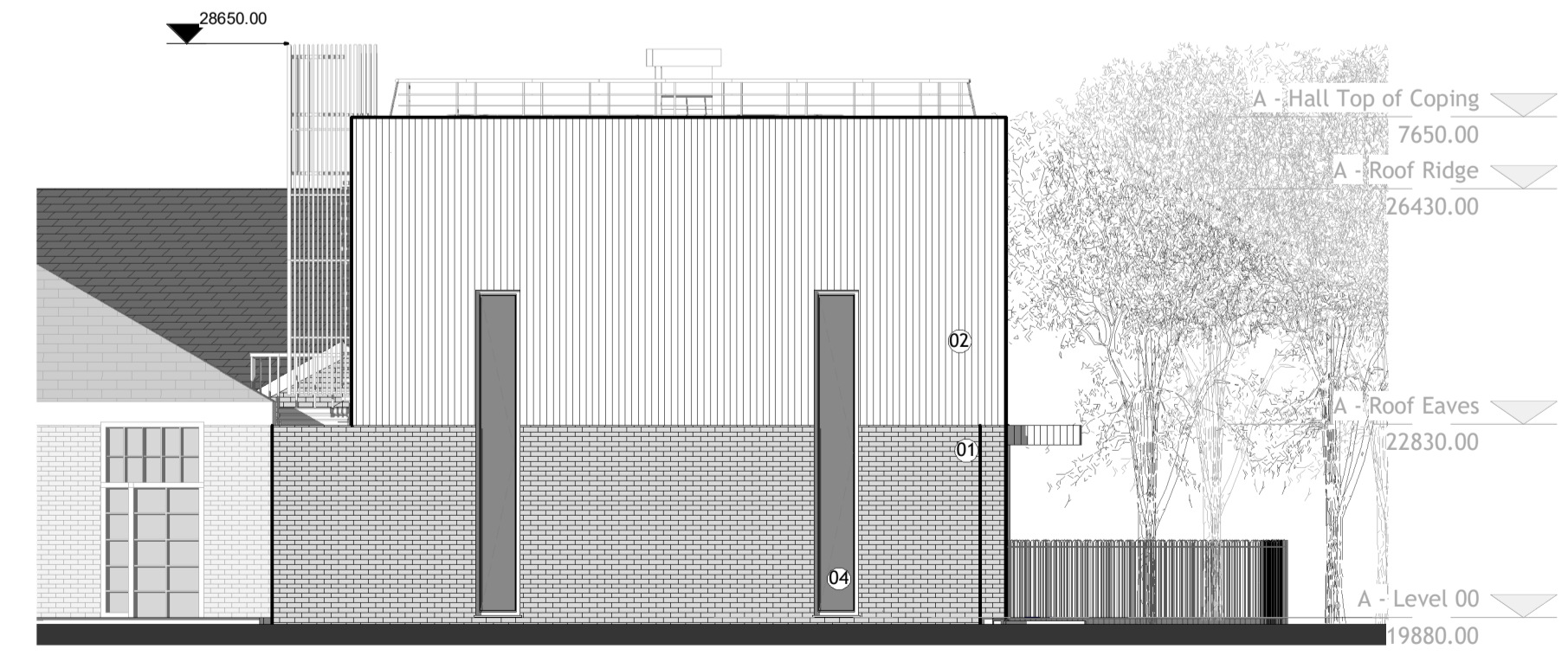


3 South East Elevation  
1 : 100

4 East Elevation  
1 : 100



5 North Elevation  
1 : 100



6 South West Elevation  
1 : 100

Revision	Amendment	Date
P7	Updates from DRP incorporated	24.08.20
P6	Planning Submission	19.06.20
P5	Planning Issue	04.06.20
P4	Draft Planning Issue	02.06.20
P3	Issued for Information	26.05.20
P2	Issued for Information	06.05.20
P1	Issued for Information	04.05.20

Drawn by	Reviewed by	Approved by
61207	APR 20	As indicated @ A1

**McBains**  
McBains Ltd  
5th Fl, 26 Finsbury Square London EC2A 1DS  
+44 (0)20 7786 7900  
mcbains.co.uk

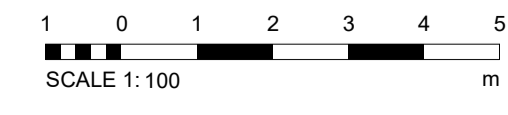
Client  
Melrose School

Project  
MELROSE SCHOOL  
Church Rd, Mitcham CR4 3BE

Drawing Title  
PROPOSED ELEVATIONS

ARCHITECTURE

Project Id	Originator	Zone	Level	Type	Discipline	Number	Suitability	Revision
MEL01	MCB	XX	XX	DR	A	0125	D5	P7



This page is intentionally left blank