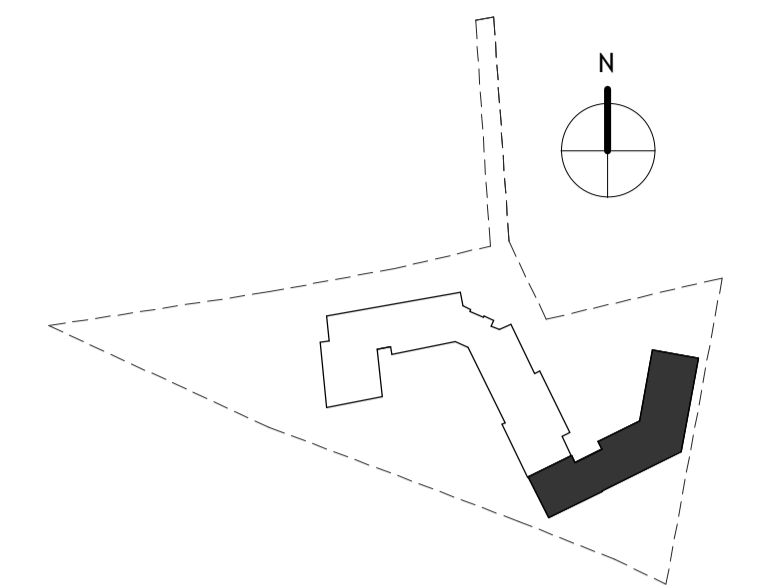


Notes  
Contractors must verify all dimensions on site before commencing any work on shop drawings. Do not scale from this drawing. McBains Ltd copyright.

BIM Transmittal Disclaimer  
McBains Ltd makes no express or implied warranties with respect to the character, function, or capabilities of the data (inclusive of 3rd party data incorporated within), or the suitability of the data for any particular purpose beyond those originally intended by McBains Ltd. please refer to our standard terms and conditions for further details.



- KEY:**
- Site Application Boundary
  - Extent of Works
  - Wall - Existing to be demolished
  - Site - Fence
  - Existing trees to retain
  - Tree to be removed
  - ▲ Main Entrance
  - Area of Refurbishment
  - Out of Scope

Revision	Amendment	Date
P8	Updates from DRP incorporated	24.08.20
P7	Planning Amendments Issue	24.07.20
P6	Planning Submission	19.06.20
P5	Planning Issue	04.06.20
P4	Draft Planning Issue	02.06.20
P3	Issued for Information	26.05.20
P2	Issued for Information	06.05.20
P1	Internal Review	01.04.20

Revision	Amendment	Date
CI	MEPB	MB
Drawn by	Reviewed by	Approved by
61207	MAR 20	As indicated @ A1
MCB Number	Date Created	Scale @ A1

**McBains**  
McBains Ltd  
5th Fl, 26 Finsbury Square London EC2A 1DS  
+44 (0)20 7786 7900  
mcbains.co.uk

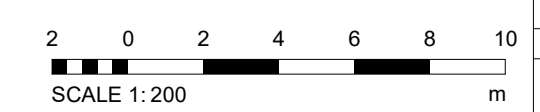
Client  
Melrose School

Project  
MELROSE SCHOOL  
Church Rd, Mitcham CR4 3BE

Drawing Title  
PROPOSED SITE PLAN

**ARCHITECTURE**

Project Ref	Originator	Zone	Level	Type	Discipline	Number	Suitability	Revision
MEL01	MCB	SI	ZZ	DR	A	0102	D5	P8



This page is intentionally left blank