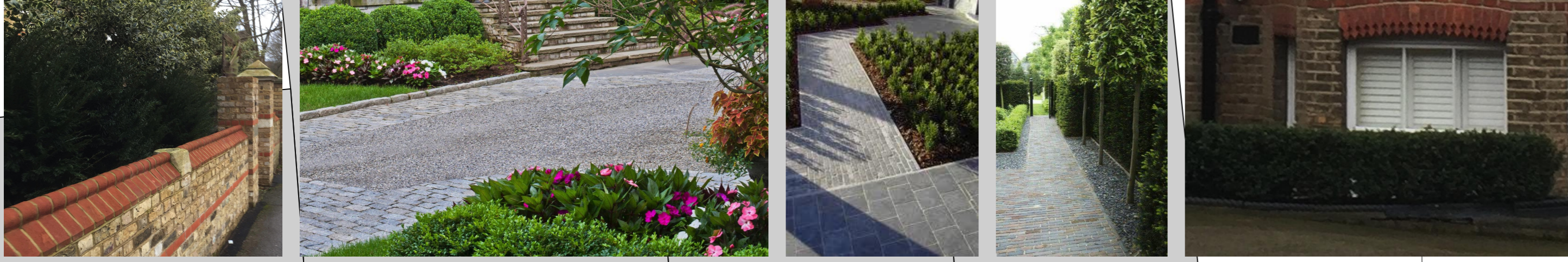
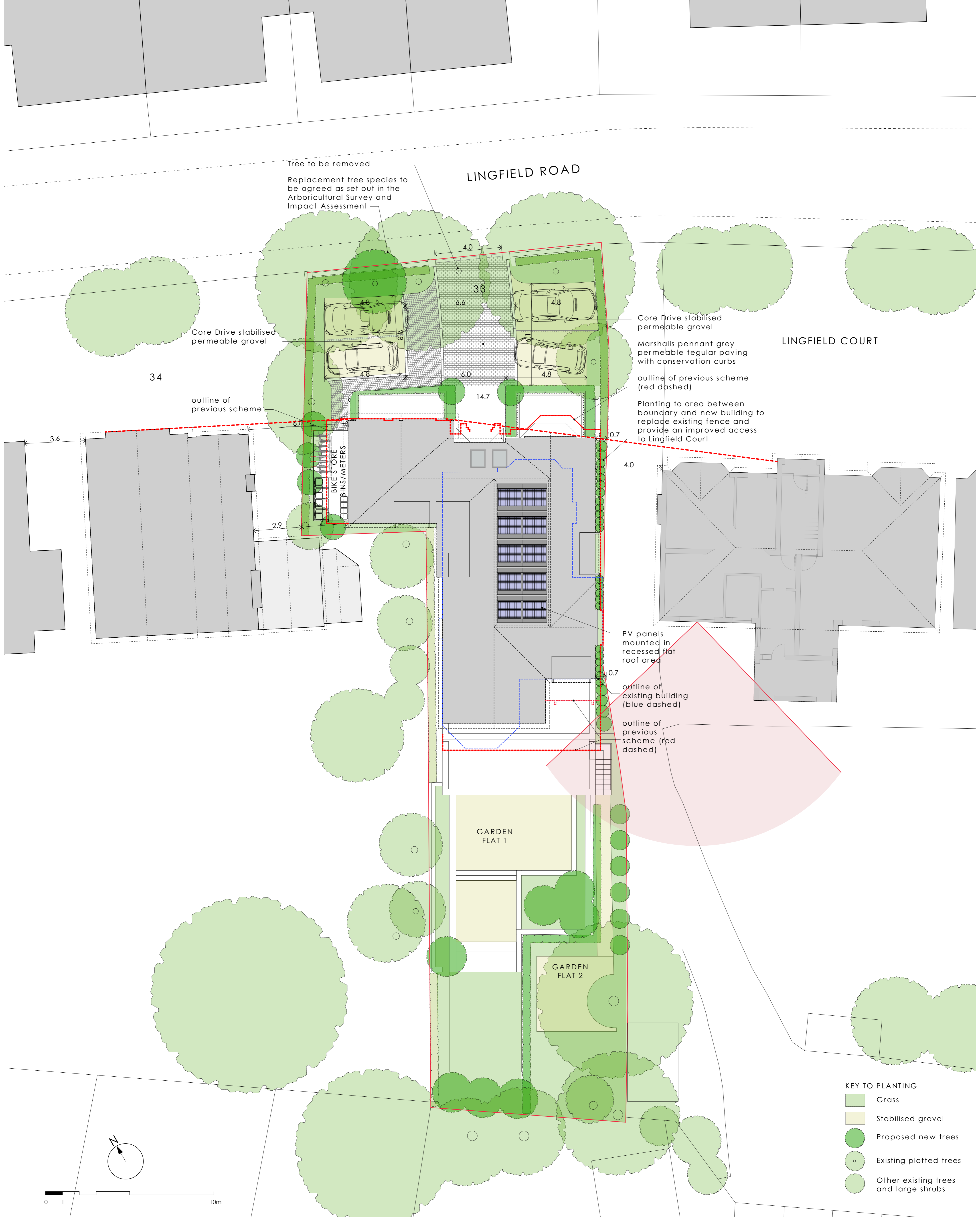


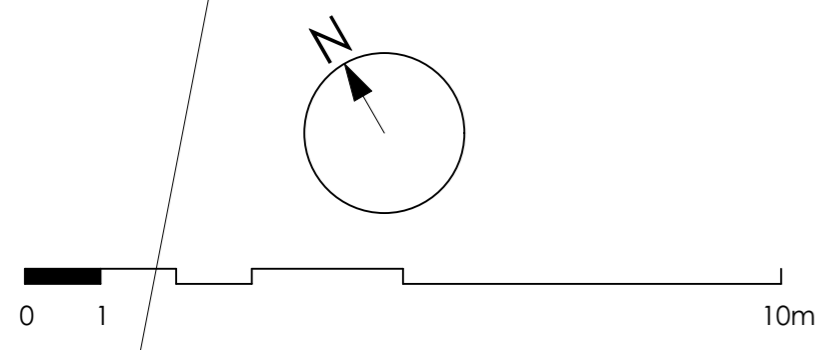
EXTERNAL HARD AND SOFT LANDSCAPING TO FRONT GARDEN



Front garden and parking area to be a combination of permeable cobble paving, stabilised gravel and planting to provide a soft landscape where the parking is secondary to the plants and trees. Note proposed planting beds in front of light wells which is a feature of the original villas in the road and planting behind the brick boundary walls again similar to the original villas.



- KEY TO PLANTING**
- Grass
 - Stabilised gravel
 - Proposed new trees
 - Existing plotted trees
 - Other existing trees and large shrubs



This page is intentionally left blank