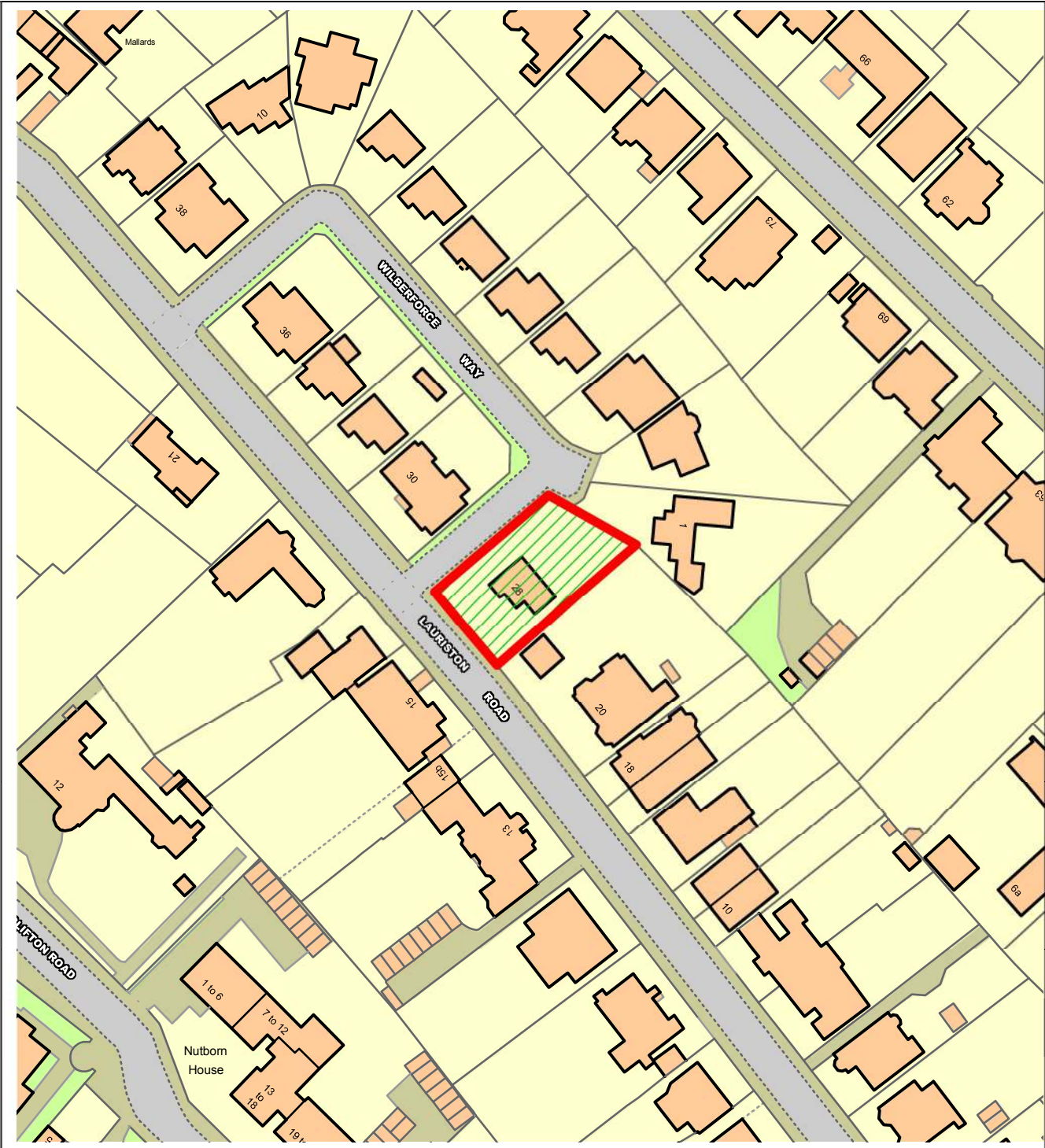
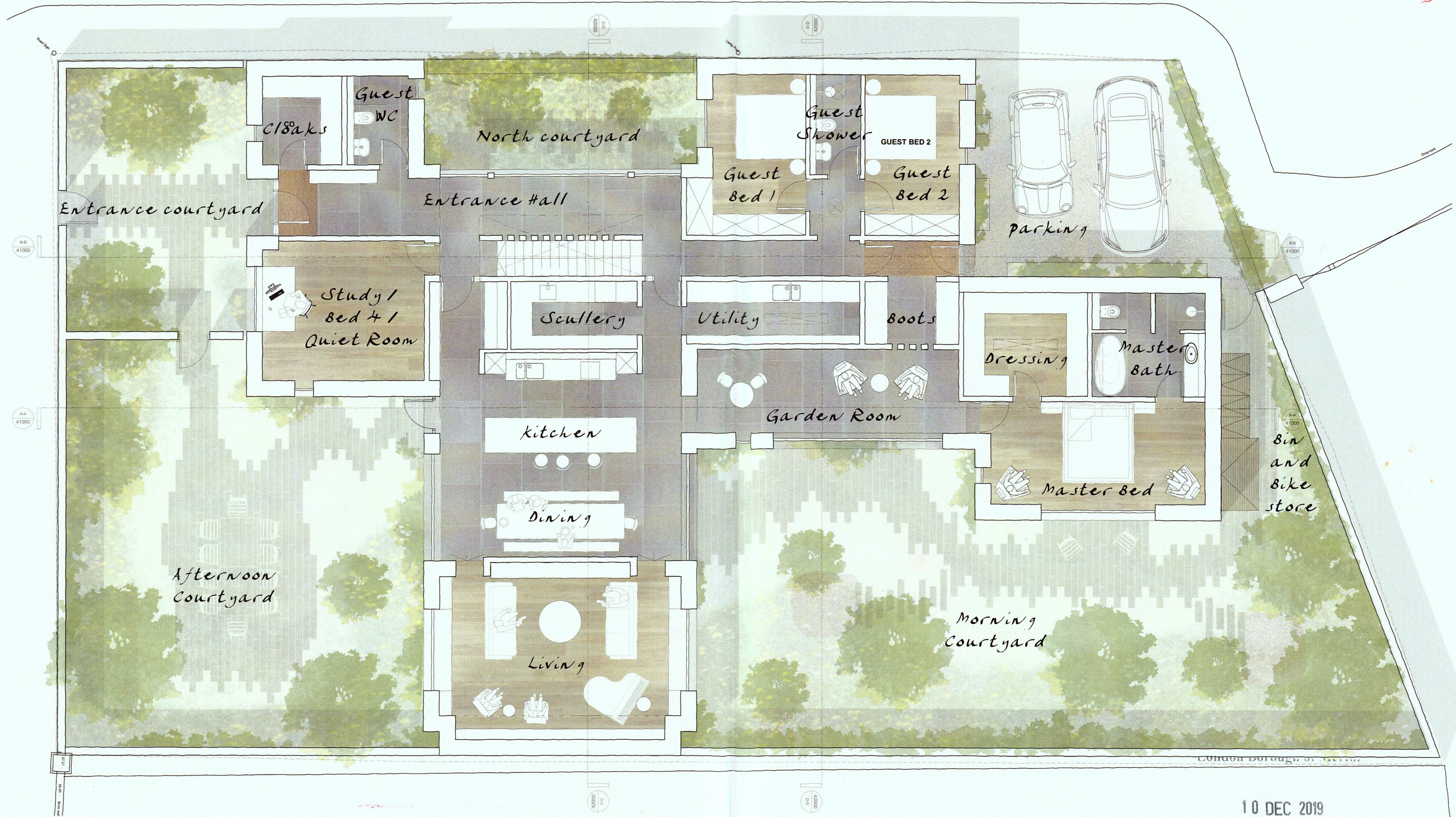


# NORTHGATE SE GIS Print Template

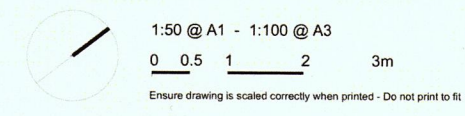


This material has been reproduced from Ordnance Survey digital map data with the permission of the controller of Her Majesty's Stationery Office, © Crown Copyright.





**AMENDED**



<b>NOTES</b> Do not scale from this drawing. All discrepancies must be reported to the Architect immediately. All subcontractors must check dimensions on site before the production of shop drawings for the approval of the architect.		<b>PROJECT DETAILS</b> 28 Lauriston Road Wimbledon London SW19 4TQ		<b>DRAWING DETAILS</b> Ground Floor Plan PRELIMINARY Planning Development Control		<b>MCLEAN QUINLAN</b> 2 The Corner   Gordon Road   Winchester   Hampshire   SO23 7DD +44 (0)1962 842 520   winchester@mcleanquinlan.com 1 Milliners House   Riverside Quarter   Eastfields Av.   London   SW18 1LP +44 (0)208 870 8600   studio@mcleanquinlan.com RIBA Chartered Practice   VAT No. 237 9889 931   mcleanquinlan.com
REV P1   22.08.19   Planning REV P2   07.11.19   Planning Amendment		SCALE ISSUED AT 1:50 @ A1 1:100 @ A3		DATE May 2019		
REV   DATE   DESCRIPTION		DRAWING NO. 219.07.21000.PL		REVISION P2		10 DEC 2019 Proposed Ground Floor - Amended 10.12.19





Page 131

AMENDED

1:50 @ A1 - 1:100 @ A3  
 0 0.5 1 2 3m  
 Ensure drawing is scaled correctly when printed - Do not print to fit

**NOTES**

Do not scale from this drawing.  
 All discrepancies must be reported to the Architect immediately.  
 All subcontractors must check dimensions on site before the production of shop drawings for the approval of the architect.

REV P1 | 22.08.19 | Planning  
 REV P2 | 07.11.19 | Planning Amendment

REV	DATE	DESCRIPTION

**PROJECT DETAILS**

28 Lauriston Road  
 Wimbledon  
 London  
 SW19 4TQ

**DRAWING DETAILS**

Roof Plan  
 PRELIMINARY

SCALE	DATE
ISSUED AT 1:50 @ A1 1:100 @ A3	May 2019
DRAWING NO.	REVISION
219.07.24000.PL	P2

**McLEAN QUINLAN**

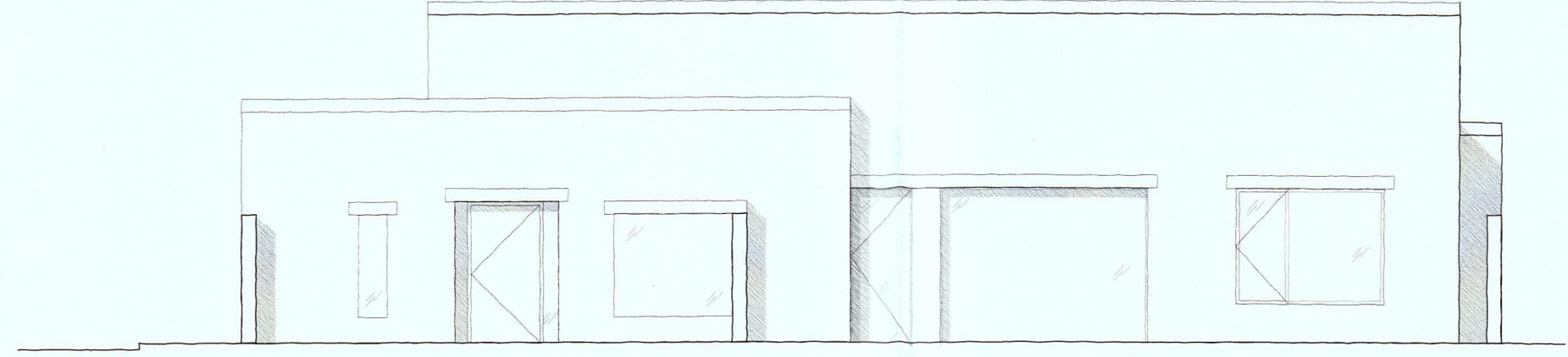
2 The Corner | Gordon Road | Winchester | Hampshire | SO23 7DD  
 +44 (0)1962 842 520 | winchester@mcleanquinlan.com  
 1 Milliners House | Riverside Quarter | Eastfields Av. | London | SW18 1LP  
 +44 (0)208 870 8600 | studio@mcleanquinlan.com

RIBA Chartered Practice VAT No. 237 9889 93 | mcleanquinlan.com

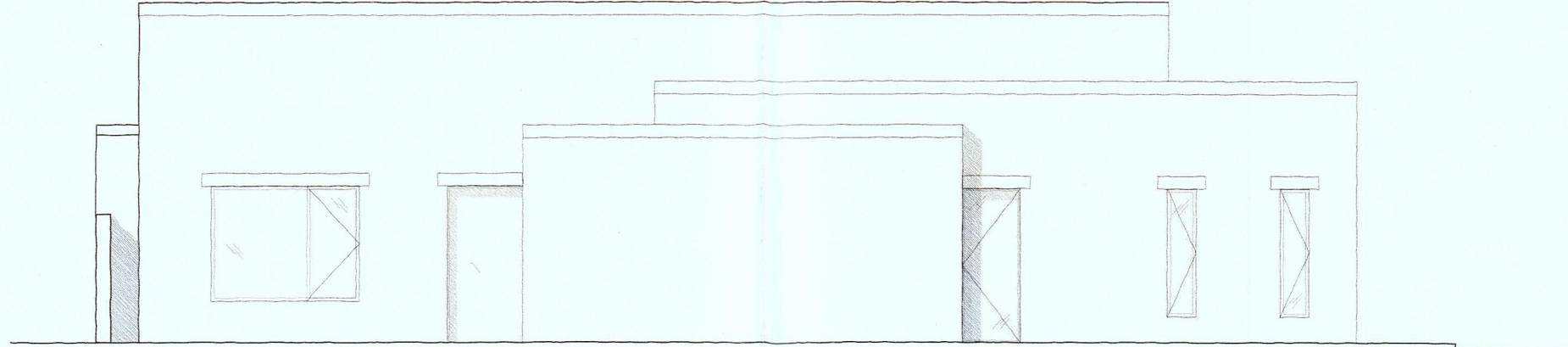
10 DEC 2019

Proposed Roof Plan - Amended 10.12.19

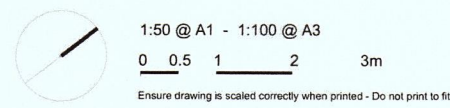




WEST ELEVATION



EAST ELEVATION



1:50 @ A1 - 1:100 @ A3  
0 0.5 1 2 3m  
Ensure drawing is scaled correctly when printed - Do not print to fit

**AMENDED**

KEY PLAN



**NOTES**  
Do not scale from this drawing.  
All discrepancies must be reported to the Architect immediately.  
All subcontractors must check dimensions on site before the production of shop drawings for the approval of the architect.

REV P1 | 22.08.19 | Planning  
REV P2 | 07.11.19 | Planning Amendment

REV	DATE	DESCRIPTION

**PROJECT DETAILS**  
28 Lauriston Road  
Wimbledon  
London  
SW19 4TQ

**DRAWING DETAILS**  
Building Elevations  
East and West - PRELIMINARY

SCALE ISSUED AT 1:50 @ A1 1:100 @ A3	DATE May 2019
DRAWING NO. 219.07.32000.EL	REVISION P2

**MCLEAN QUINLAN**

2 The Corner | Gordon Road | Winchester | Hampshire | SO23 7DD  
+44 (0)1962 842 520 | winchester@mcleanquinlan.com  
1 Millers House | Riverside Quarter | Eastfields Av. | London | SW16 1LP  
+44 (0)208 870 8500 | studio@mcleanquinlan.com

RIBA Chartered Practical VAT No. 237 9689 93 | mcleanquinlan.com

10 DEC 2019

*Proposed Amendment Revoked - Amended 10-12-19*





**NORTH ELEVATION**

Page 133



**SOUTH ELEVATION**

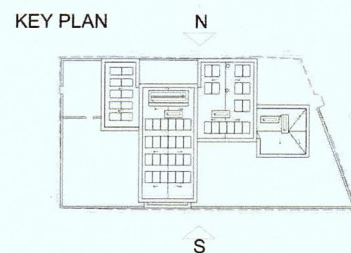
**AMENDED**

London Borough of Merton

10 DEC 2019

Planning Department

1:50 @ A1 - 1:100 @ A3  
 0 0.5 1 2 3m  
 Ensure drawing is scaled correctly when printed - Do not print to fit



**NOTES**

Do not scale from this drawing.  
 All discrepancies must be reported to the Architect immediately.  
 All subcontractors must check dimensions on site before the production of shop drawings for the approval of the architect.

REV P1 | 22.08.19 | Planning  
 REV P2 | 07.11.19 | Planning Amendment

REV	DATE	DESCRIPTION

**PROJECT DETAILS**

28 Lauriston Road  
 Wimbledon  
 London  
 SW19 4TQ

**DRAWING DETAILS**

Building Elevations  
 North and South - PRELIMINARY

SCALE ISSUED AT 1:50 @ A1 1:100 @ A3	DATE May 2019
DRAWING NO. 219.07.31000.EL	REVISION P2

**MCLEAN QUINLAN**

2 The Corner | Gordon Road | Winchester | Hampshire | SO23 7DD  
 +44 (0)1962 842 520 | winchester@mcleanquinlan.com  
 1 Milliners House | Riverside Quarter | Eastfields Av. | London | SW18 1LP  
 +44 (0)208 870 8600 | studio@mcleanquinlan.com

RIBA Chartered Practice | VAT No. 237 9889 931 | mcleanquinlan.com

*Proposed Building Elevations - Amended 10-12-19*



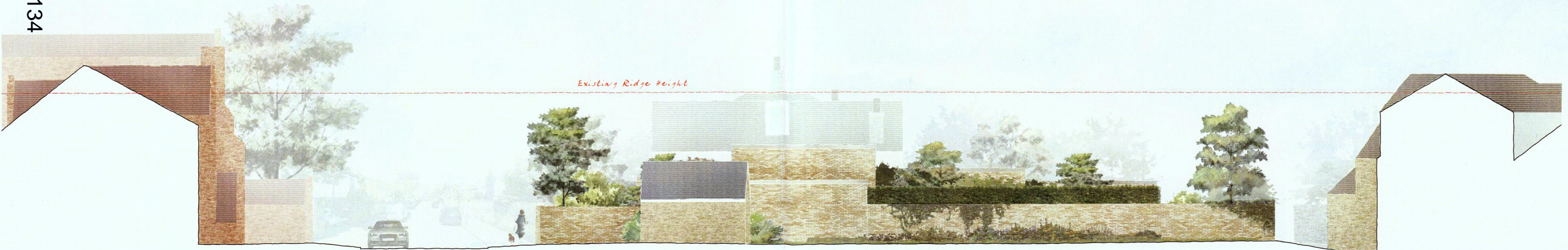


**ELEVATION FROM WILBERFORCE WAY AND NO. 30. LAURISTON ROAD**

Wilberforce Way

Lauriston Road

Page 134



**ELEVATION FROM NO. 20 LAURISTON ROAD**

Lauriston Road

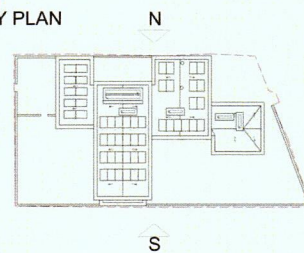
Garden of No 20 Lauriston Road

London Borough of Merton

10 DEC 2019

**AMENDED**

KEY PLAN



1:100 @ A1 - 1:200 @ A3

0 1 2 3 4 5m

Ensure drawing is scaled correctly when printed - Do not print to fit

**NOTES**

Do not scale from this drawing.  
All discrepancies must be reported to the Architect immediately.  
All subcontractors must check dimensions on site before the production of shop drawings for the approval of the architect.

REV P1 | 22.08.19 | Planning  
REV P2 | 07.11.19 | Planning Amendment

REV	DATE	DESCRIPTION

**PROJECT DETAILS**

28 Lauriston Road  
Wimbledon  
London  
SW19 4TQ

**DRAWING DETAILS**

Street Elevations  
North & South - PRELIMINARY

SCALE  
**ISSUED AT 1:100 @ A1**  
1:200 @ A3

DATE  
May 2019

DRAWING NO.  
219.07.34000.EL

REVISION  
**P2**

Planning Development Co.

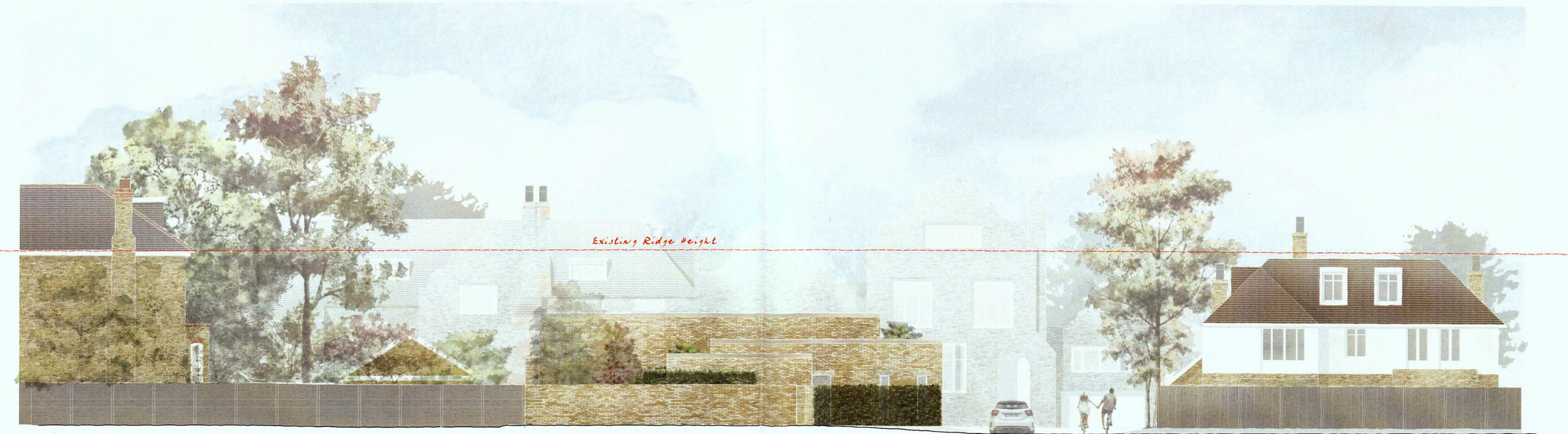
**MCLEAN QUINLAN**

2 The Corner | Gordon Road | Winchester | Hampshire | SO23 7DD  
+44 (0)1962 842 520 | winchester@mcleanquinlan.com  
1 Milliners House | Riverside Quarter | Eastfields Av. | London | SW18 1LP  
+44 (0)208 870 8600 | studio@mcleanquinlan.com

RIBA Chartered Practice | VAT No. 237 9889 93 | mcleanquinlan.com

*Proposed Street Elevations 01 - Amended 10.12.19*





ELEVATION FROM NO 1 WILBERFORCE WAY

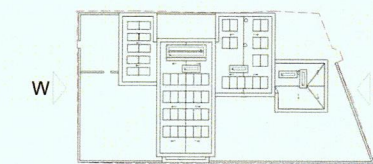


ELEVATION FROM LAURISTON ROAD

**AMENDED**

1:100 @ A1 - 1:200 @ A3  
0 1 2 3 4 5m  
Ensure drawing is scaled correctly when printed - Do not print to fit

KEY PLAN



**NOTES**  
Do not scale from this drawing.  
All discrepancies must be reported to the Architect immediately.  
All subcontractors must check dimensions on site before the production of shop drawings for the approval of the architect.

REV P1 | 22.08.19 | Planning  
REV P2 | 07.11.19 | Planning Amendment

REV	DATE	DESCRIPTION

**PROJECT DETAILS**  
28 Lauriston Road  
Wimbledon  
London  
SW19 4TQ

**DRAWING DETAILS**  
Street Elevations  
East +West - PRELIMINARY

SCALE	DATE
ISSUED AT 1:100 @ A1 1:200 @ A3	May 2019
DRAWING NO.	REVISION
219.07.33000.EL	P2

Planning Department of

**MCLEAN QUINLAN**

2 The Corner | Gordon Road | Winchester | Hampshire | SO23 7DD  
+44 (0)1962 842 520 | winchester@mcleanquinlan.com  
1 Milliners House | Riverside Quarter | Eastfields Av. | London | SW18 1LP  
+44 (0)208 870 9600 | studio@mcleanquinlan.com

RIBA Chartered Practitioner VAT No. 237 9889 631 | mcleanquinlan.com

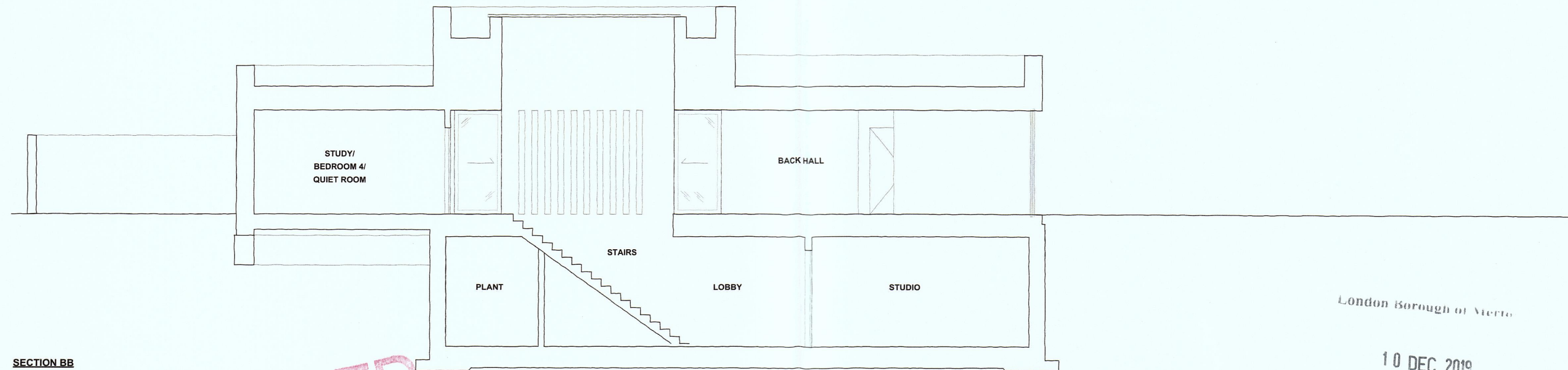
10 DEC 2019

*Proposed Street Elevations CR - Amended  
10-12-19*





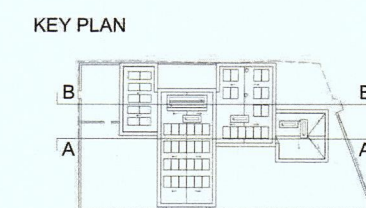
SECTION AA



SECTION BB

AMENDED

1:50 @ A1 - 1:100 @ A3  
 0 0.5 1 2 3m  
 Ensure drawing is scaled correctly when printed - Do not print to fit



NOTES

Do not scale from this drawing.  
 All discrepancies must be reported to the Architect immediately.  
 All subcontractors must check dimensions on site before the production of shop drawings for the approval of the architect.

REV P1 | 22.08.19 | Planning  
 REV P2 | 07.11.19 | Planning Amendment

REV	DATE	DESCRIPTION

PROJECT DETAILS

28 Lauriston Road  
 Wimbledon  
 London  
 SW19 4TQ

DRAWING DETAILS

Building Sections  
 AA-BB - PRELIMINARY

SCALE	DATE
ISSUED AT 1:50 @ A1 1:100 @ A3	May 2019
DRAWING NO.	REVISION
219.07.41000.SEC	P2

London Borough of Merton

10 DEC 2019

**MCLEAN QUINLAN**

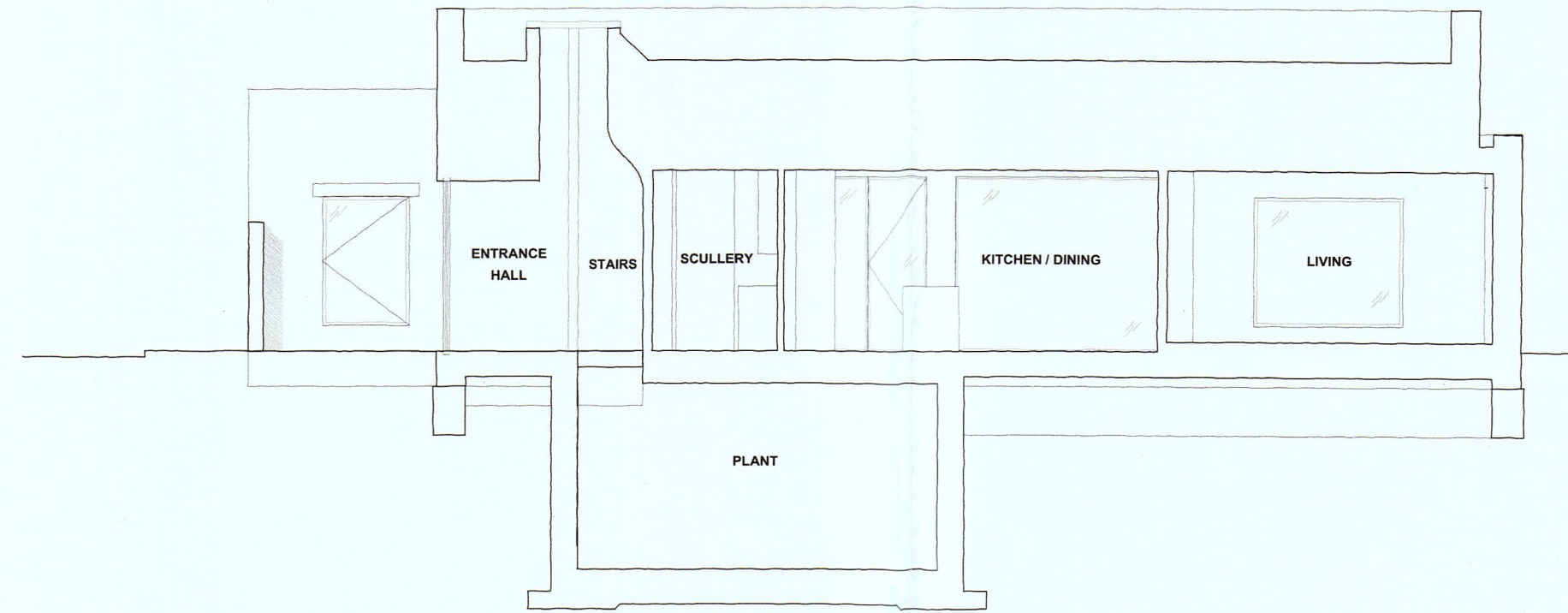
2 The Cornhill London Road | Winchester | Hampshire | SO23 7DD  
 +44 (0)1962 842 820 | winchester@mcleanquinlan.com

1 Minerva House | Riverside Quarter | Eastfields Av | London | SW18 1LP  
 +44 (0)208 970 8000 | london@mcleanquinlan.com

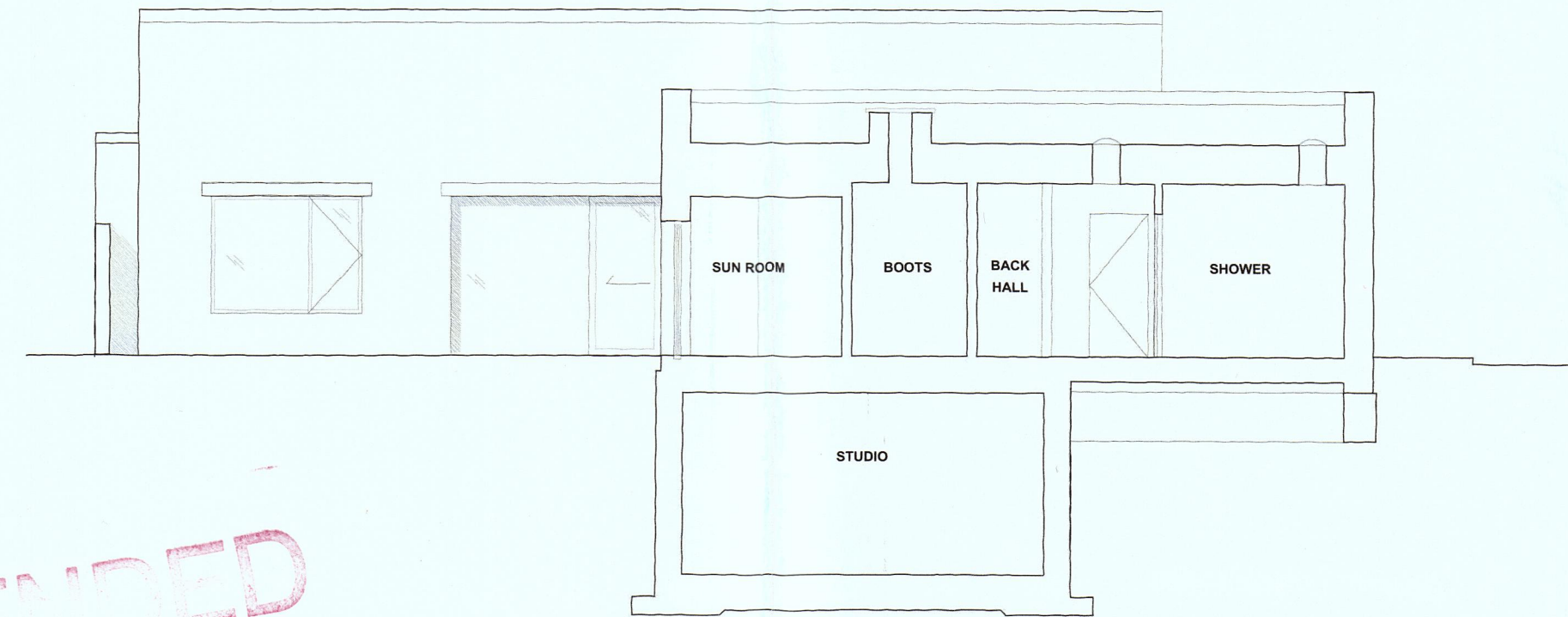
RIBA Chartered Practice VAT No. 237 6889 931 | mcleanquinlan.com

Proposed Building Sections - Amended 10.12.19





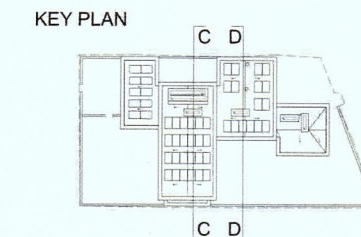
SECTION CC



SECTION DD

**AMENDED**

1:50 @ A1 - 1:100 @ A3  
 0 0.5 1 2 3m  
 Ensure drawing is scaled correctly when printed - Do not print to fit



**NOTES**  
 Do not scale from this drawing.  
 All discrepancies must be reported to the Architect immediately.  
 All subcontractors must check dimensions on site before the production of shop drawings for the approval of the architect.

REV	DATE	DESCRIPTION
REV P1	22.08.19	Planning
REV P2	07.11.19	Planning Amendment

**PROJECT DETAILS**  
 28 Lauriston Road  
 Wimbledon  
 London  
 SW19 4TQ

**DRAWING DETAILS**  
 Building Sections  
 CC-DD - PRELIMINARY

SCALE	DATE
ISSUED AT 1:50 @ A1 1:100 @ A3	May 2019
DRAWING NO.	REVISION
219.07.42000.SEC	P2

**MCLEAN QUINLAN**

2 The Corner | Gordon Road | Winchester | Hampshire | SO23 7DD  
 +44 (0)1962 842 520 | winchester@mcleanquinlan.com  
 1 Milliners House | Riverside Quarter | Eastfields Av. | London | SW18 1LP  
 +44 (0)208 870 8800 | studio@mcleanquinlan.com

RIBA Chartered Practice VAT No. 237 9889 93 | mcleanquinlan.com

London Borough of Merton  
 10 DEC 2019  
 Planning Department

*Proposed Sections 02 - Amended - 10.12.19*



This page is intentionally left blank