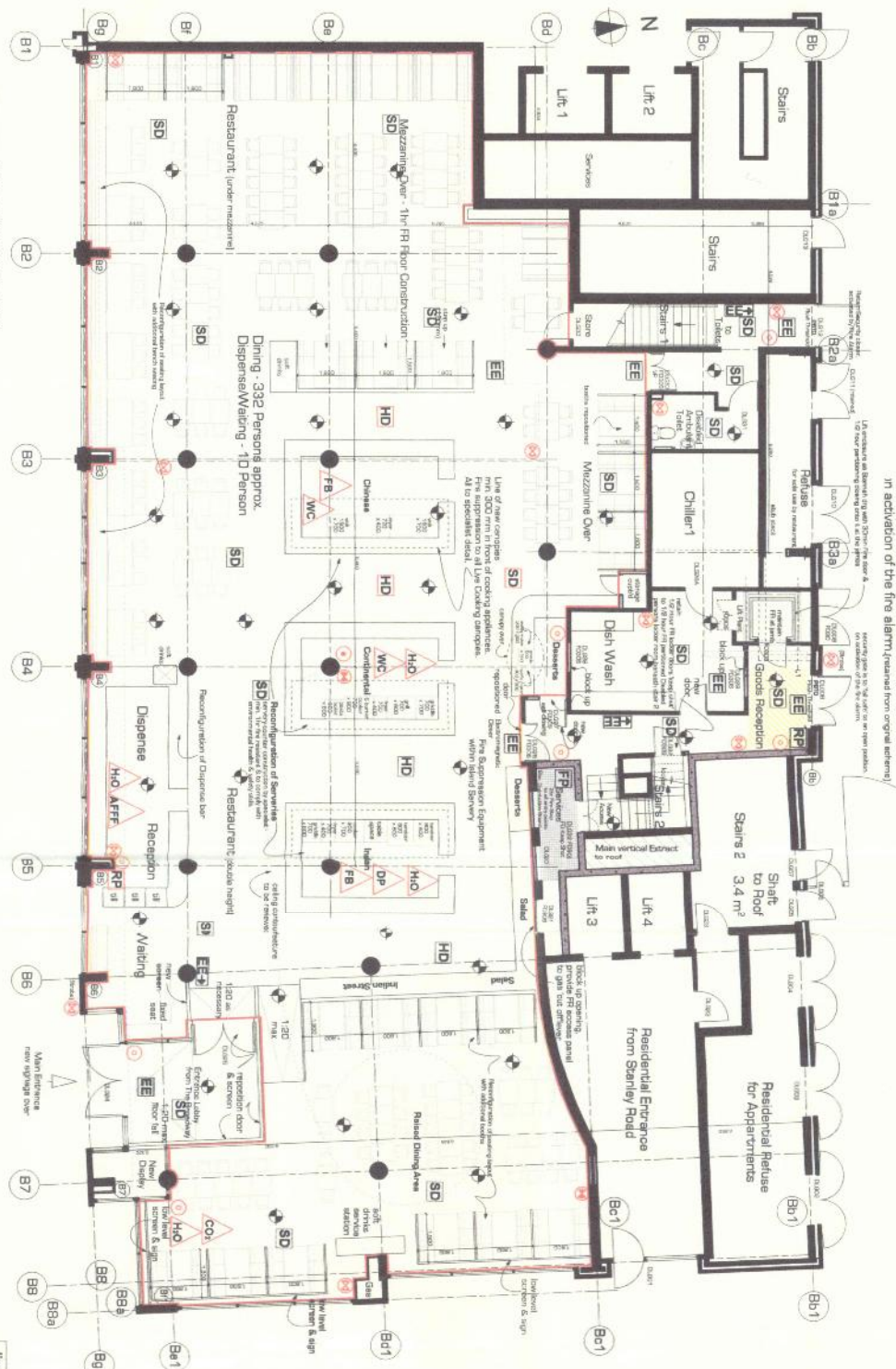


- AFFE** Fire Alarm - Fire Alarm Control Panel
- CO2** New CO2 Gas Cylinder - 2.1m
- WC** New WC - 2.1m
- H/O** New Fire Alarm - Fire Alarm Control Panel
- WM** New Fire Alarm - Fire Alarm Control Panel
- FB** Fire Alarm - Fire Alarm Control Panel
- DP** Fire Alarm - Fire Alarm Control Panel
- VP** New Fire Alarm - Fire Alarm Control Panel
- FP** Fire Alarm - Fire Alarm Control Panel
- RP** Fire Alarm - Fire Alarm Control Panel
- PATO** Fire Alarm - Fire Alarm Control Panel



**FIRE SAFETY AND MEANS OF ESCAPE** [to comply with part B1 (Egress, Refuge)]  
Refer General Specification, Fire Strategy, Electrical etc

**Fire Fighting Equipment** is to comply with BS EN 3-1:2008 and BS 5306 Part 8:2012

Approved existing furniture must satisfy as a minimum Standard Ignitor Source C (ignitance level) and C80 Ignitor Source 5 as specified in BS 5852:2008

With a suitable fire alarm triggering must be inherently resistant to the relevant performance requirements of BS 5857 Part 2:2005 or comply with the Type E Artificial foliage and other decorative effects are to be fire resistant to the satisfaction of the Fire Authority.

Roof floor covering should conform to BS 5287:1989 when tested in accordance with BS 5857 Part 2:2005

Wall finishes to public corridors & kitchen are to comprise of a high quality impervious surface, resistant to chemical & impact attack, and comply with BS 475 Part 7:1997

Wall and ceiling surface spread of flame Class 0 local to cooking areas in kitchen and service, protected escape routes & staircases, Class 1 to all other areas inc. The Cooling Area at sensory counters to be protected with either a Fire Suppression System or Annual B102 (or equal approved as detailed by specialist) or Resistant Existing Network System if acceptable. Protection to be provided by Fire Check, etc Fire Stop any additional duct/ Services to the ceiling of any Fire Division Wall/ Gateway / Pyro Shield fire-resistant Fire Dampers Units changed to new services

Quality / Pyro Shield fire-resistant Fire Dampers Units changed to new services

All Steel Columns to be protected with fire resistant COTV to be installed in liaison with and to meet the requirements of the Police Authority. Refer to drawings BS 475 Section 3.1.1:2008 and BS 475:1989-4.1:2009 as amended

**ALL BRITISH STANDARDS MENTIONED TO BE CHECKED THAT THEY STILL CONFORM TO CURRENT REGULATION**

**FIRE ALARM**  
Fire alarm system to comply with BS 5839:2013 Part 1 Code of Practice. (system to be identified with adjacent tenancies). Fire Sirens at old entrance to be maintained in closed position prior to 1hr enclosure.

**FIRE FIGHTING EQUIPMENT**  
Portable fire extinguishers to be hung on wall brackets with the carrying handle of the extinguisher at about 1.1m from floor level. Fire extinguishers to be in quick-release containers, hung on wall brackets with the base of the container at about 1.8m from floor level. Equipment to be placed so as to be readily accessible for use. At least one extinguisher should be placed at or near to each exit from upper and lower ground floor, and where extinguishers are provided for special risks, as far as practicable, these should be placed in conspicuous locations. Members of the Fire Protection Association qualified in the relevant fire extinguisher, their Report on provision of fire-fighting equipment to be provided and all areas of the residential for use by the Fire Authority.

**NOTICES & EMERGENCY LIGHTING**  
GENERAL FIRE NOTICE OR PICTORIAL FIRE ACTION NOTICE, which sets out the procedures to be followed in the event of fire to be provided & identification to each fire alarm call point. All safety signs & notices to comply with BS 5499:4:2013

All subject to Fire Officer's approval and statutory approvals.

Systems to be finally designed and installed by contractors being members of the NICEIC or equal approved association of electrical contractors and to comply with BS 5499:4:2013 for Emergency Lighting

BS 5498:4:2013 for Fire Alarms, Fire Alarm to be incorporated to that of main building fire alarm system as for main premises. Fire alarm to have service conductors that fall safe open position as for main premises. Fire alarm to have service conductors that fall safe open position as for main premises. Fire alarm to have service conductors that fall safe open position as for main premises.

CCTV to be installed to detailed requirements of Metropolitan Police Force.

**PRELIMINARY**

Jimmy's  
Block B  
The Broadway  
Wynbodon  
SW19 1RH  
Refurbishment to Restaurant  
Licensing - Ground Floor

**BMJD architects**  
84 Barkers Lane, Wythall, Birmingham, B47 6BU  
Tel: 01546292773 Fax: 01546 823821  
scale: 1:1000 date: APRIL 15 2014  
11

This page is intentionally left blank