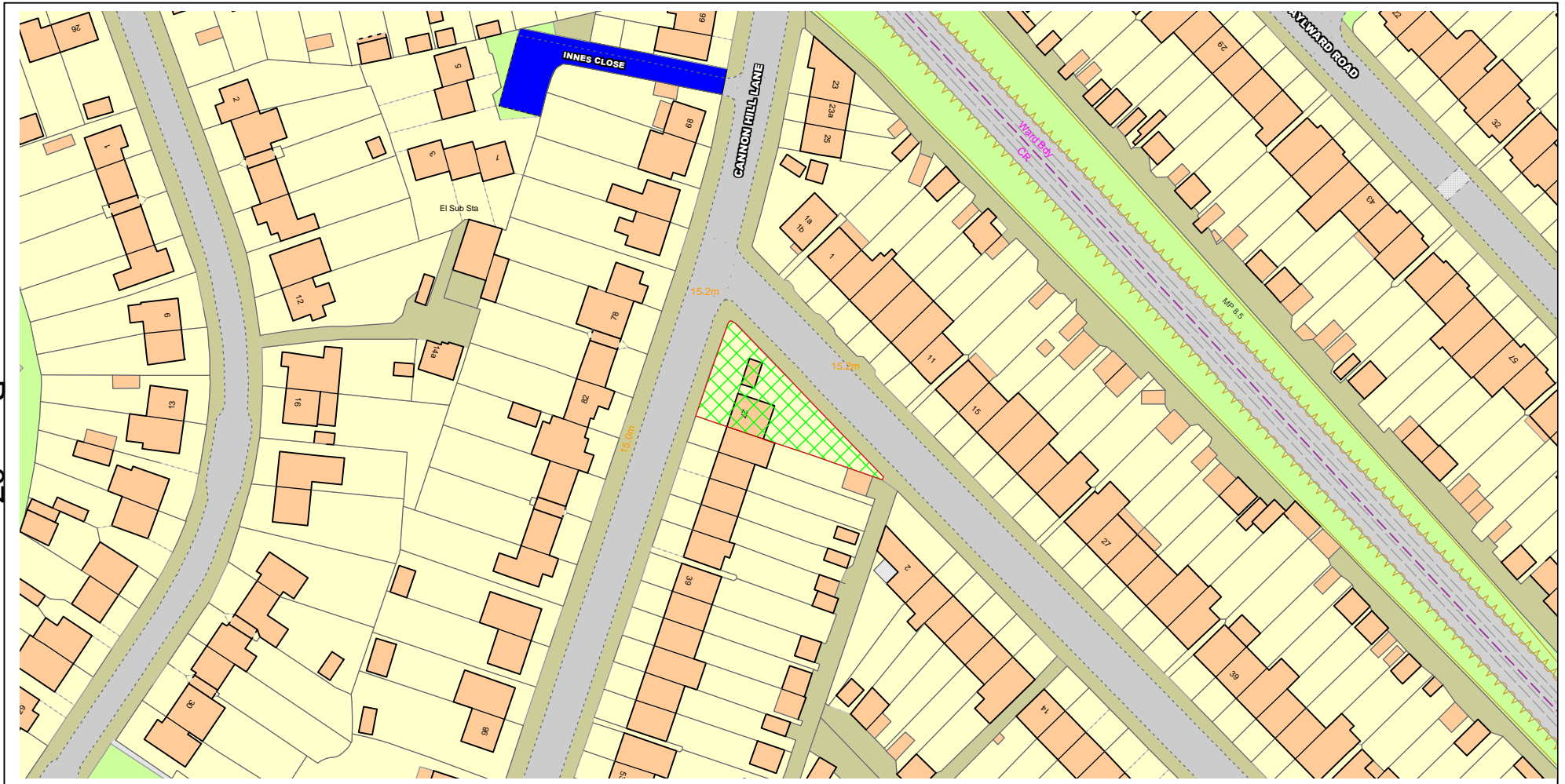


NORTHGATE SE GIS Print Template

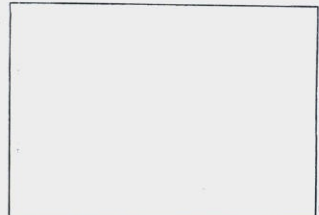
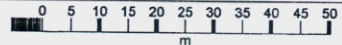


Page 87

Text Details 27 Cannon Hill Lane

This material has been reproduced from Ordnance Survey digital map data with the permission of the controller of Her Majesty's Stationery Office, © Crown Copyright.

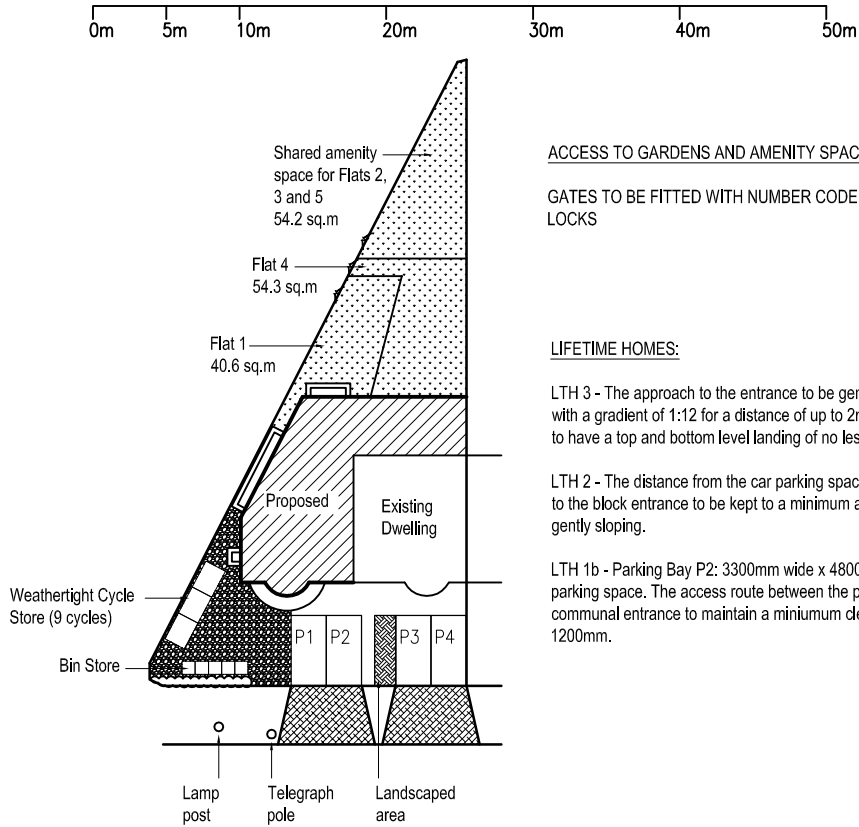
17 MAY 2012



OS Mastermap
 01 November 2011, ID: BW1-00105983
 maps.blackwell.co.uk
 1:1250 scale print at A4, Centre: 524488 E, 168988 N
 ©Crown Copyright. Licence no. 100041040



BLACKWELL'S
 www.blackwellmapping.co.uk
 TEL: 0113 245 2623
 maps.leeds@blackwell.co.uk



ACCESS TO GARDENS AND AMENITY SPACE:

GATES TO BE FITTED WITH NUMBER CODE LOCKS

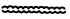




LIFETIME HOMES:

LTH 3 - The approach to the entrance to be gently sloping with a gradient of 1:12 for a distance of up to 2m. All slopes to have a top and bottom level landing of no less than 1.2m.

LTH 2 - The distance from the car parking space of Criterion 1 to the block entrance to be kept to a minimum and be level or gently sloping.

LTH 1b - Parking Bay P2: 3300mm wide x 4800mm deep parking space. The access route between the parking and the communal entrance to maintain a minimum clear width of 1200mm.

KEY:

-  Hedge
-  Gravel in Groundtrax Systems Ltd "Groundgridz" or similar permeable paving solution. 62.5 sq.m
-  Grass (Outdoor amenity areas). 149.1 sq.m
-  Proposed vehicle crossover
-  P4 Parking bay

SITE PLAN

(Scale 1:500)

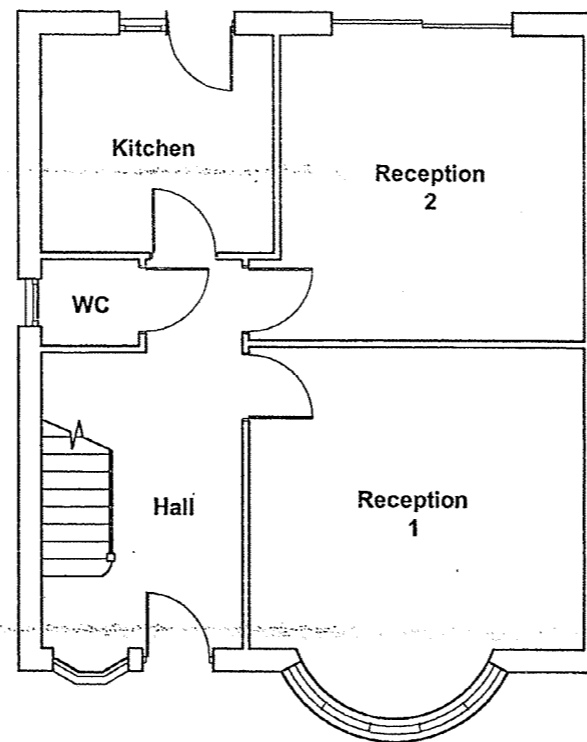
HERBERT STUMPP
PROJECTS

Civil & Structural Engineers - Construction Health and Safety
Land & Building Surveys - Architectural Services
Project & Construction Management
Party Wall Surveyors

07921 214399
Email: info@herbertstumpp.co.uk

REVISION B: SIDE LIGHTWELL EXTENDED
REVISION A: CYCLE STORE ADDED, BIN STORE RELOCATED

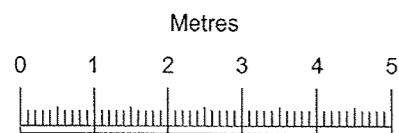
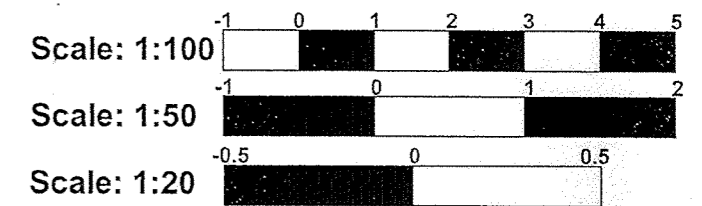
Project 27 CANNON HILL LANE LONDON SW20 9JY SITE PLAN		Drawing No 004B
Scale Page 89	Drawing Size A4	Date Oct 2015



London Borough of Merton

17 MAY 2012

Planning Development Control



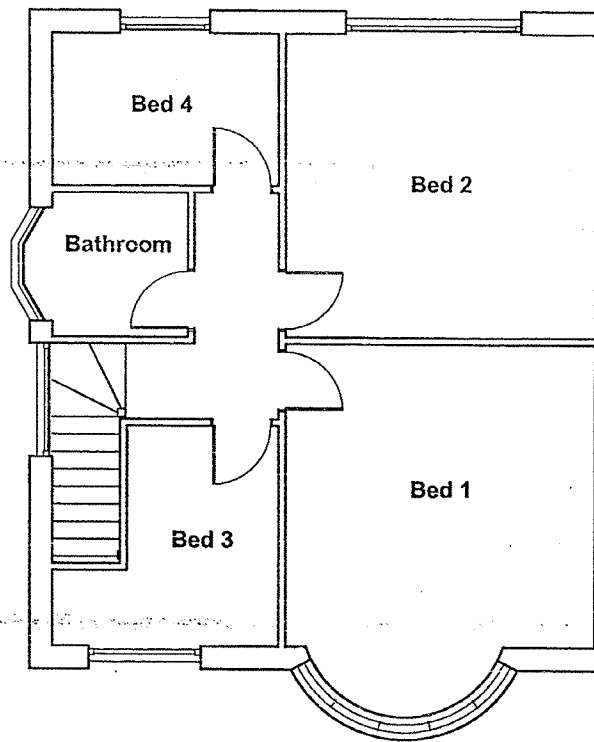
All dimensions shown are approximate and are to be confirmed by working drawings.

Maple



Manufacturers of fine Timber Frame Homes
 Tamacre Hall Business Park, Tamacre Lane, St. Michaels, Preston PR3 0SZ Tel: 01995 679444

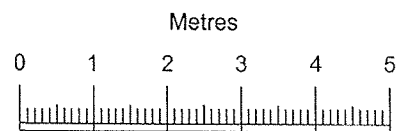
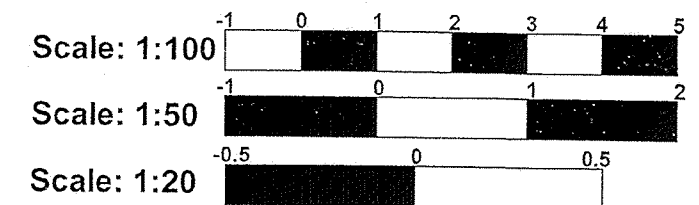
Client	Mr Gary Clark	©Maple Timber Systems Ltd. This drawing may not be reproduced in any material form or passed to a third party without the prior written permission of Maple Timber Systems Ltd. SupaWall System is covered by UK Patent no.'s 2415714 / 2436989.			
Drawing Title	Ground Floor Layout - Existing	Site			
Drawn	MB	Checked	Scale 1:100 @ A3	Drg. No.	7951/EX/02G
				Date	April 2012



London Borough of Merton

17 MAY 2012

Planning Development Control



All dimensions shown are approximate and are to be confirmed by working drawings.

Maple



Manufacturers of fine Timber Frame Homes
Tarnacre Hall Business Park, Tarnacre Lane, St. Michaels, Preston PR3 0SZ. Tel: 01995 679444

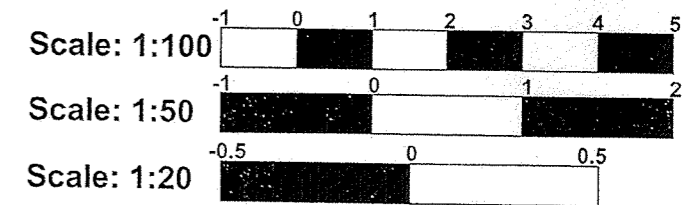
Client	Mr Gary Clark	©Maple Timber Systems Ltd. This drawing may not be reproduced in any material form or passed to a third party without the prior written permission of Maple Timber Systems Ltd. SupaWall System is covered by UK Patent no.'s 2415714 / 2436989.			
Drawing Title	First Floor Layout	Site			
Drawn	MB	Checked	Scale 1:100 @ A3	Drg. No. 7951/EX/03G	Date April 2012



London Borough of Merton

17 MAY 2012

Planning Development Control

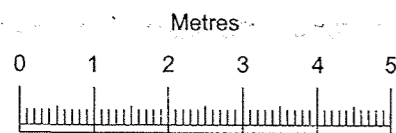


Maple



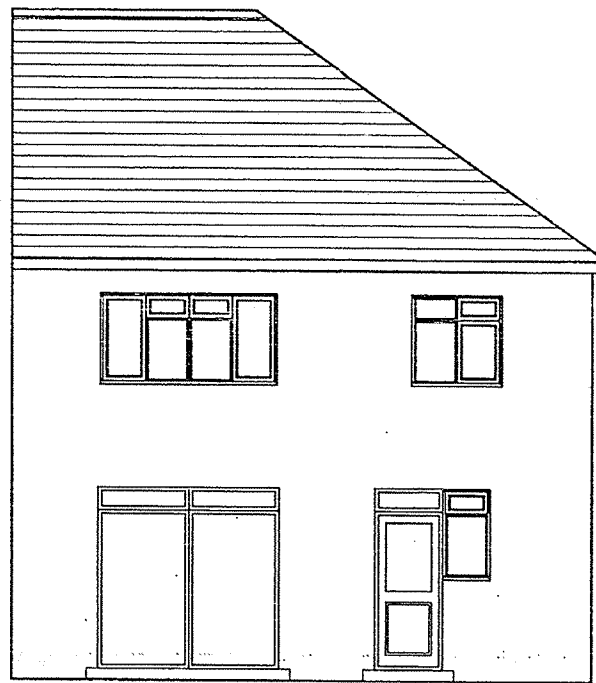
Manufacturers of fine Timber Frame Homes

Tarnacre Hall Business Park, Tarnacre Lane, St. Michaels, Preston PR3 0SZ Tel: 01995 679444



All dimensions shown are approximate and are to be confirmed by working drawings.

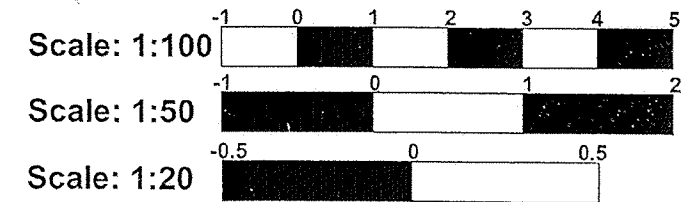
Client	Mr Gary Clark	©Maple Timber Systems Ltd. This drawing may not be reproduced in any material form or passed to a third party without the prior written permission of Maple Timber Systems Ltd. SupaWall System is covered by UK Patent no.s 2415714 / 2436989.			
Drawing Title	Front Elevation - Existing	Site			
Drawn	MB	Checked	Scale 1:100 @ A3	Drg. No. 7951/EX/04G	Date April 2012



London Borough of Merton

17 MAY 2012

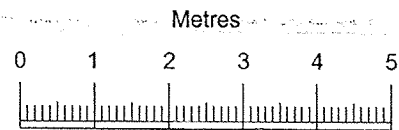
Planning Development Control



Maple

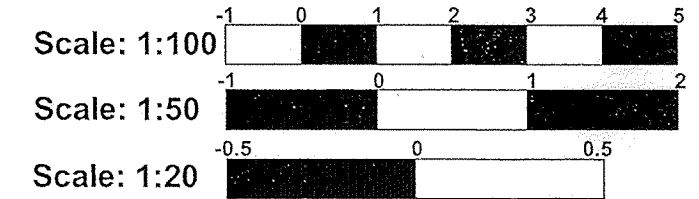
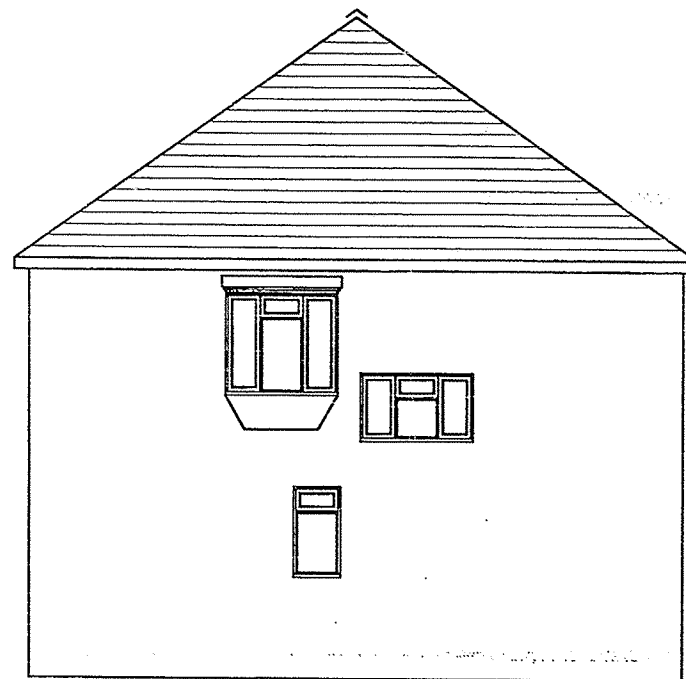


Manufacturers of fine Timber Frame Homes
 Tamacre Hall Business Park, Tamacre Lane, St. Michaels, Preston PR3 0SZ Tel: 01995 679444



All dimensions shown are approximate and are to be confirmed by working drawings.

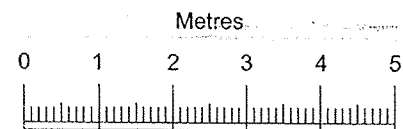
Client	Mr Gary Clark	©Maple Timber Systems Ltd. This drawing may not be reproduced in any material form or passed to a third party without the prior written permission of Maple Timber Systems Ltd. SupaWall System is covered by UK Patent no.'s 2415714 / 2436989.			
Drawing Title	Rear Elevation - Existing	Site			
Drawn	MB	Checked	Scale 1:100 @ A3	Drg. No. 7951/EX/07G	Date April 2012



London Borough of Merton

17 MAY 2012

Planning Development Control



All dimensions shown are approximate and are to be confirmed by working drawings.



Manufacturers of fine Timber Frame Homes
Tarnacre Hall Business Park, Tarnacre Lane, St. Michaels, Preston PR3 0SZ Tel: 01995 679444

Client	Mr Gary Clark	©Maple Timber Systems Ltd. This drawing may not be reproduced in any material form or passed to a third party without the prior written permission of Maple Timber Systems Ltd. SuperWall System is covered by UK Patent no.'s 2415714 / 2436989.			
Drawing Title	Side Elevation 1 - Existing	Site			
Drawn	MB	Checked	Scale 1:100 @ A3	Drg. No.	7951/EX/08G
			Date	April 2012	