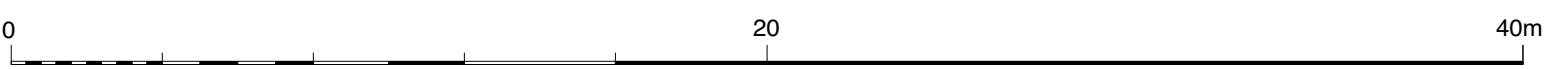


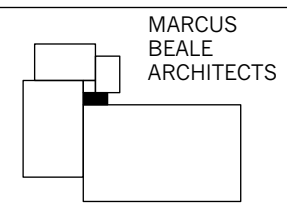
- CIRCULATION
- BEDROOMS
- LIVING SPACES
- BATHROOMS AND WET AREAS
- KITCHENS AND HOT AREAS
- STORE

APPROVED PLANNING APPLICATION 08/P3096 FOOTPRINT

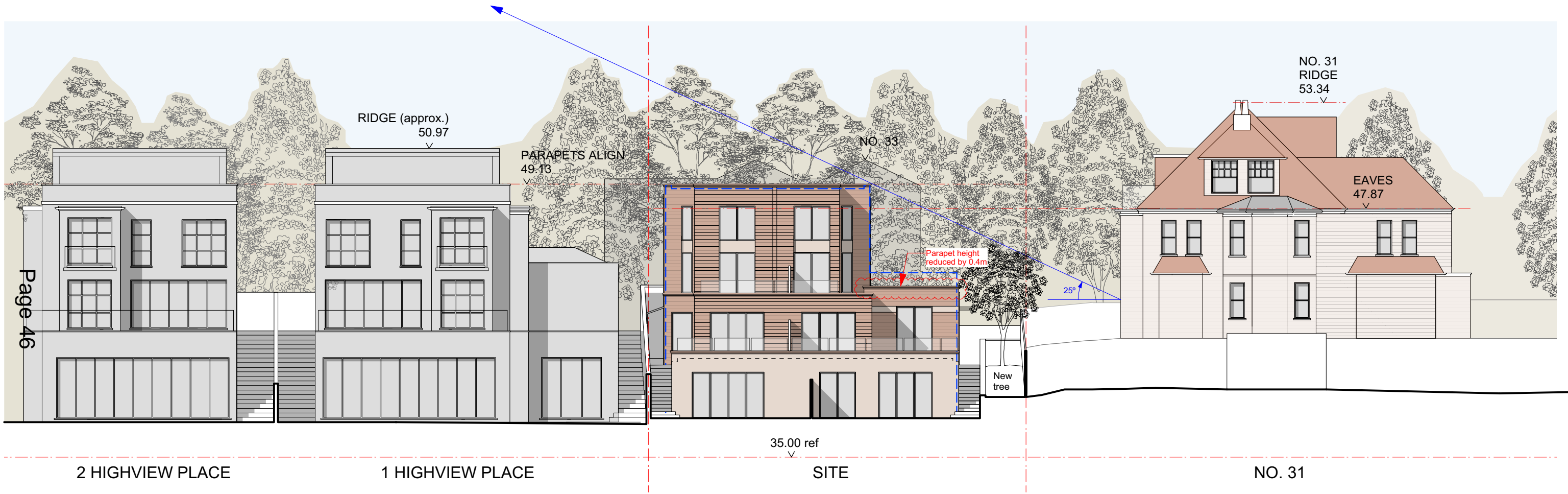


REV P2 - 24/02/16 - Reduced height of single storey east wing by 0.4m
 REV P1 - 07/12/15 - Issued for planning
 Revisions

MBA, 1 Compton Road
 Wimbledon, London SW19 7QA
 Phone +44 (0) 20 8946 4141
 Fax +44 (0) 20 8946 2299
 Email mba@marcus-beale.co.uk
 www.marcus-beale.co.uk



31B ARTERBERRY ROAD		SITE ELEVATION NORTH	PROPOSED
Scale 1:200@A3	Drawn PM		664/ 016 P2
Date NOV 2015	Check AS		



Page 46

2 HIGHVIEW PLACE

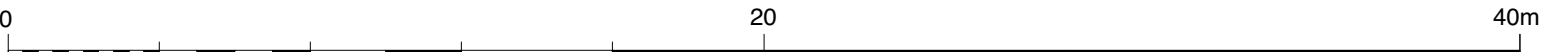
1 HIGHVIEW PLACE

35.00 ref

SITE

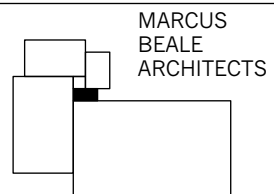
NO. 31

APPROVED PLANNING APPLICATION 08/P3096 FOOTPRINT



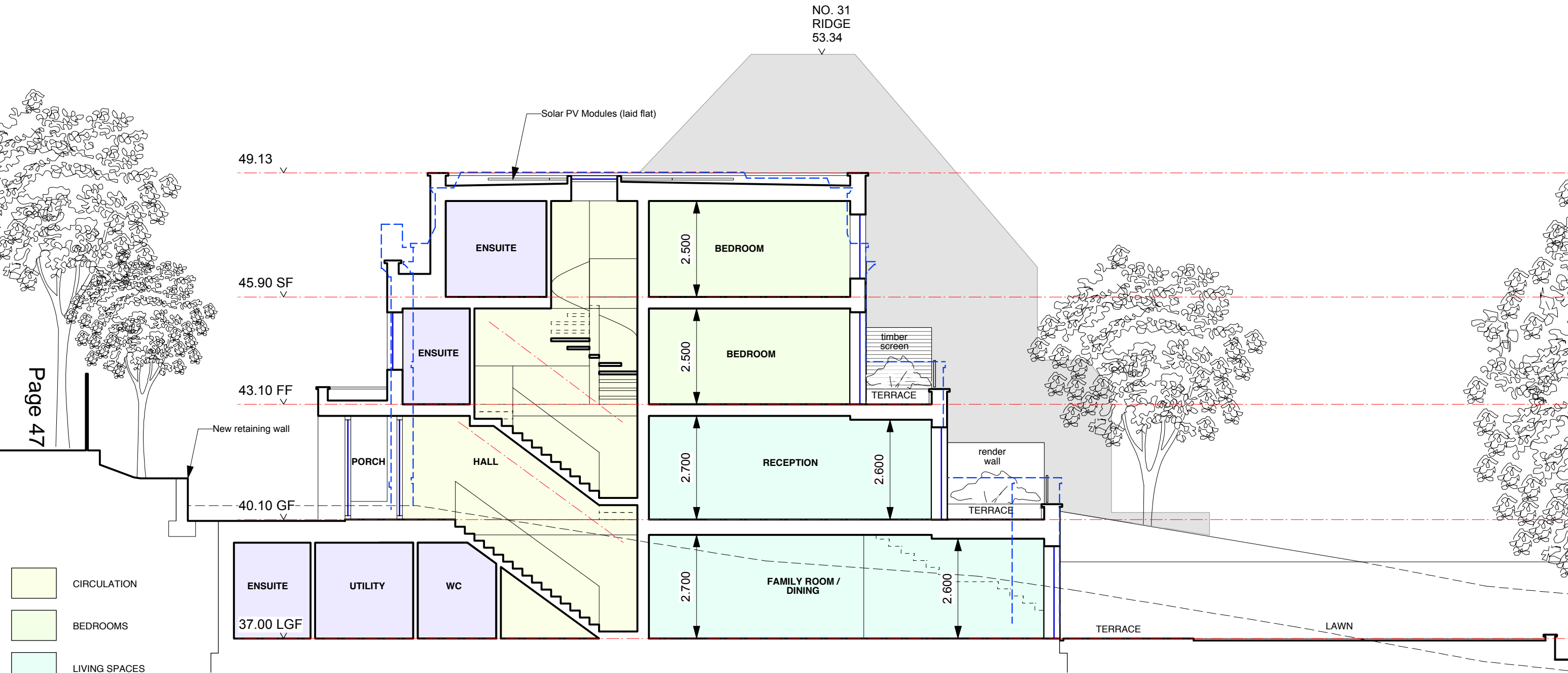
REV P2 - 24/02/16 - Reduced height of single storey east wing by 0.4m
 REV P1 - 07/12/15 - Issued for planning
 Revisions

MBA, 1 Compton Road
 Wimbledon, London SW19 7QA
 Phone +44 (0) 20 8946 4141
 Fax +44 (0) 20 8946 2299
 Email mba@marcus-beale.co.uk
 www.marcus-beale.co.uk

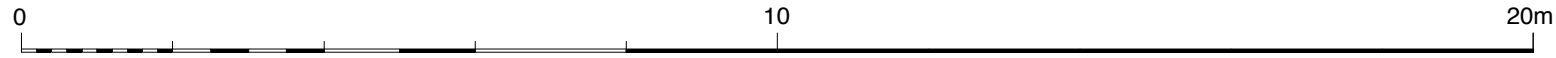


MARCUS
 BEALE
 ARCHITECTS

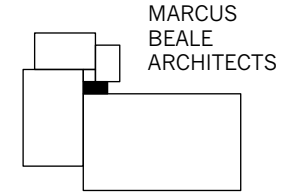
31B ARTERBERRY ROAD		PROPOSED
SITE ELEVATION SOUTH		
Scale 1:200@A3	Drawn PM	664/ 014 P2
Date NOV 2015	Check AS	



- CIRCULATION
- BEDROOMS
- LIVING SPACES
- BATHROOMS AND WET AREAS
- KITCHENS AND HOT AREAS
- STORE
- APPROVED PLANNING APPLICATION 09/P1295 FOOTPRINT



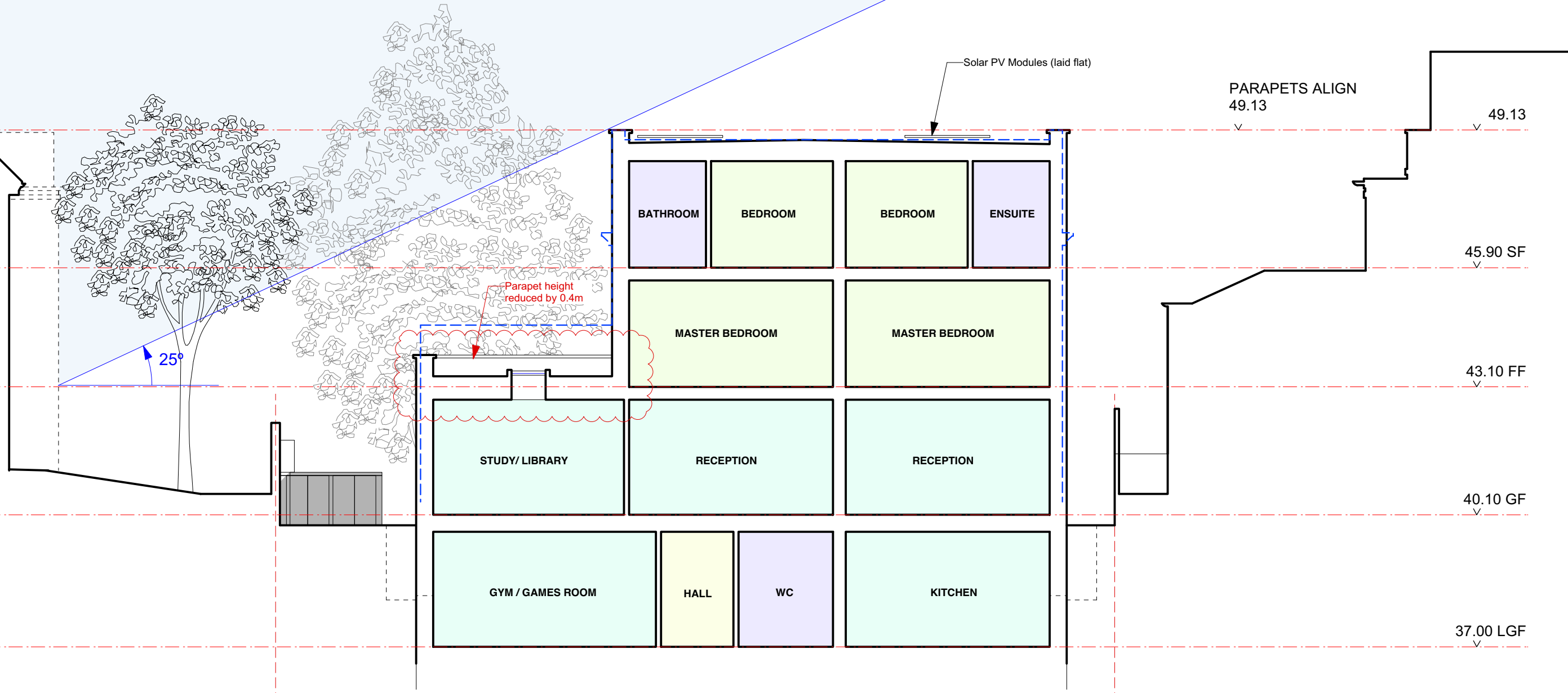
MBA, 1 Compton Road
Wimbledon, London SW19 7QA
Phone +44 (0) 20 8946 4141
Fax +44 (0) 20 8946 2299
Email mba@marcus-beale.co.uk
www.marcus-beale.co.uk



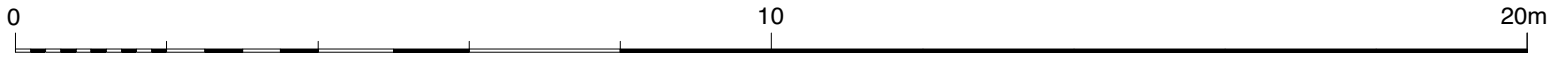
MARCUS
BEALE
ARCHITECTS

REV P1 - 07/12/15 - Issued for planning
Revisions

31B ARTERBERRY ROAD		PROPOSED
SECTION AA		
Scale 1:100@A3	Drawn PM	664/ 007 P1
Date NOV 2015	Check AS	



- CIRCULATION
- BEDROOMS
- LIVING SPACES
- BATHROOMS AND WET AREAS
- KITCHENS AND HOT AREAS
- STORE
- APPROVED PLANNING APPLICATION 09/P1295 FOOTPRINT

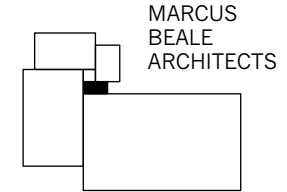


NO. 31

S I T E

1 HIGHVIEW PLACE

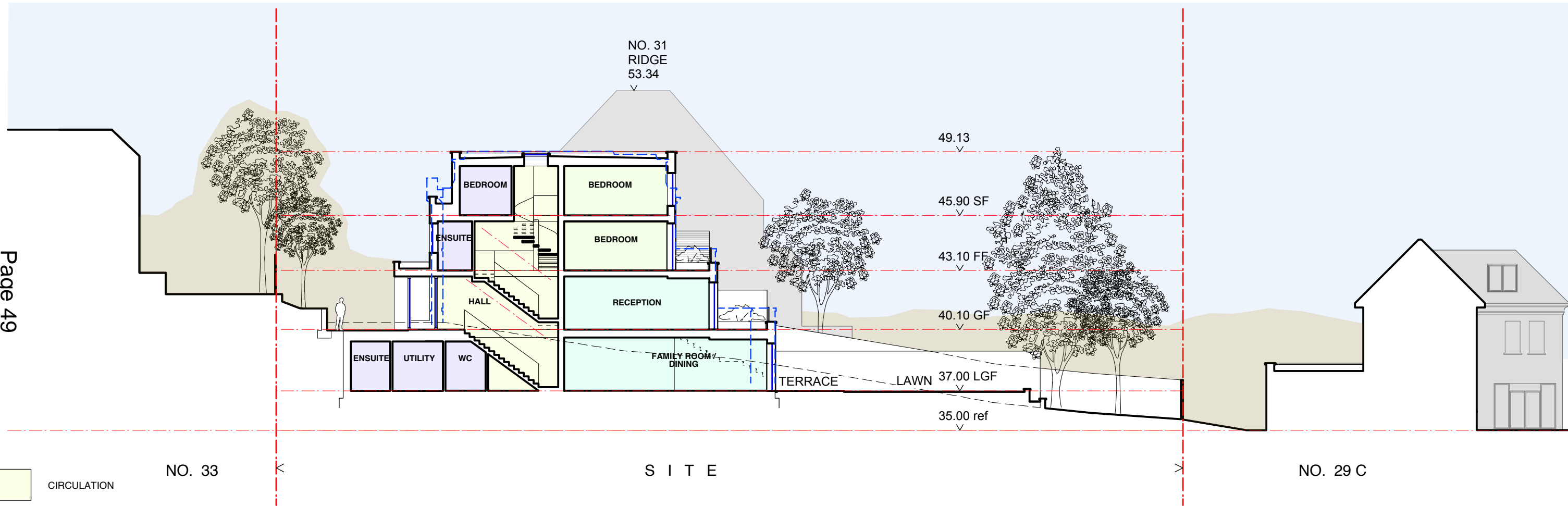
MBA, 1 Compton Road
Wimbledon, London SW19 7QA
Phone +44 (0) 20 8946 4141
Fax +44 (0) 20 8946 2299
Email mba@marcus-beale.co.uk
www.marcus-beale.co.uk



MARCUS
BEALE
ARCHITECTS

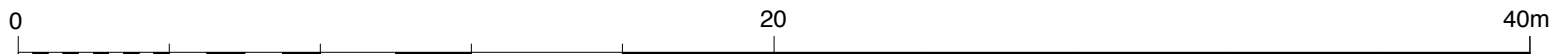
REV P2 - 24/02/16 - Reduced height of single storey east wing by 0.4m
REV P1 - 07/12/15 - Issued for planning
Revisions

31B ARTERBERRY ROAD		SECTION BB	PROPOSED
Scale 1:100@A3	Drawn PM		
Date NOV 2015	Check AS	664/ 012 P2	

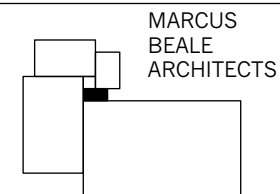


- CIRCULATION
- BEDROOMS
- LIVING SPACES
- BATHROOMS AND WET AREAS
- KITCHENS AND HOT AREAS
- STORE

APPROVED PLANNING APPLICATION 08/P3096 FOOTPRINT



MBA, 1 Compton Road
Wimbledon, London SW19 7QA
Phone +44 (0) 20 8946 4141
Fax +44 (0) 20 8946 2299
Email mba@marcus-beale.co.uk
www.marcus-beale.co.uk



MARCUS
BEALE
ARCHITECTS

REV P1 - 07/12/15 - Issued for planning
Revisions

31B ARTERBERRY ROAD		PROPOSED
SITE SECTION A		
Scale 1:200@A3	Drawn PM	664/ 013 P1
Date NOV 2015	Check AS	

This page is intentionally left blank