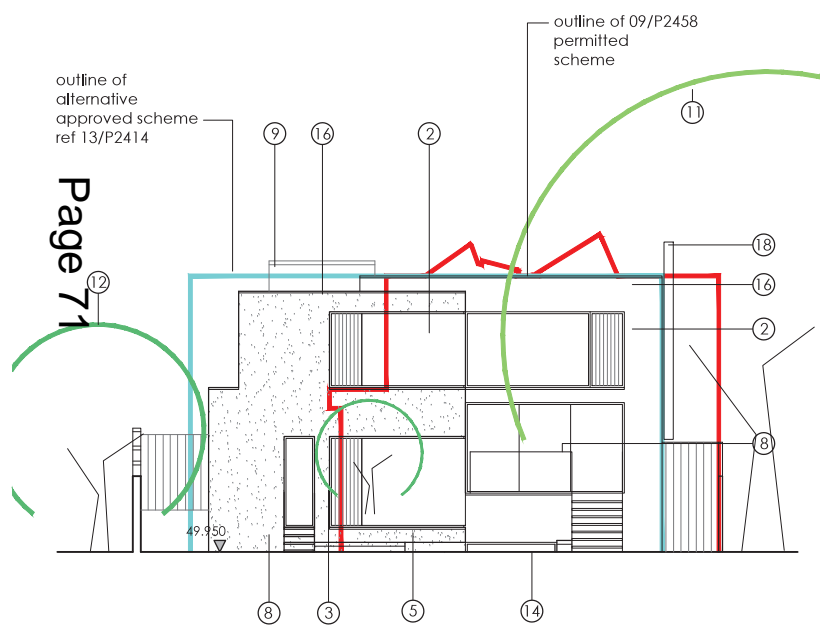
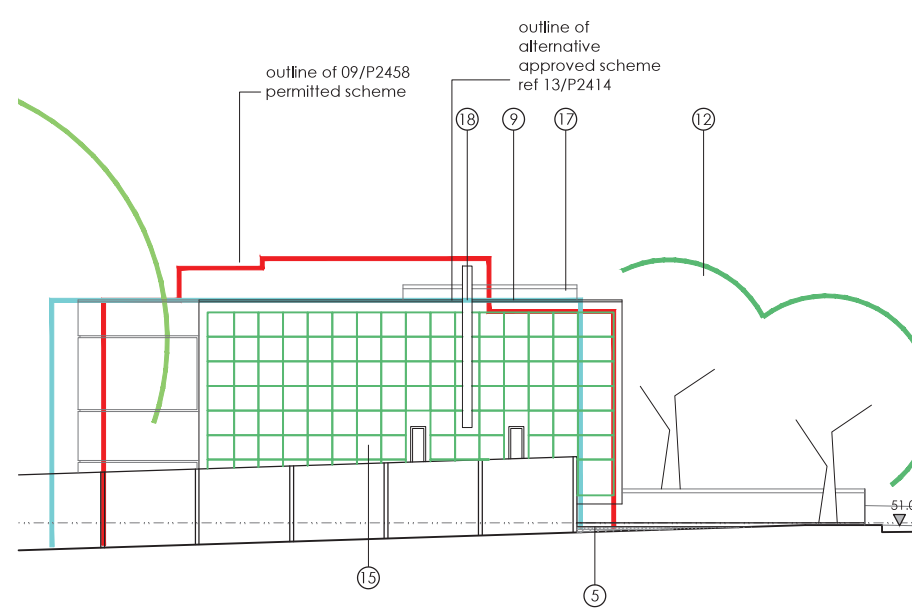


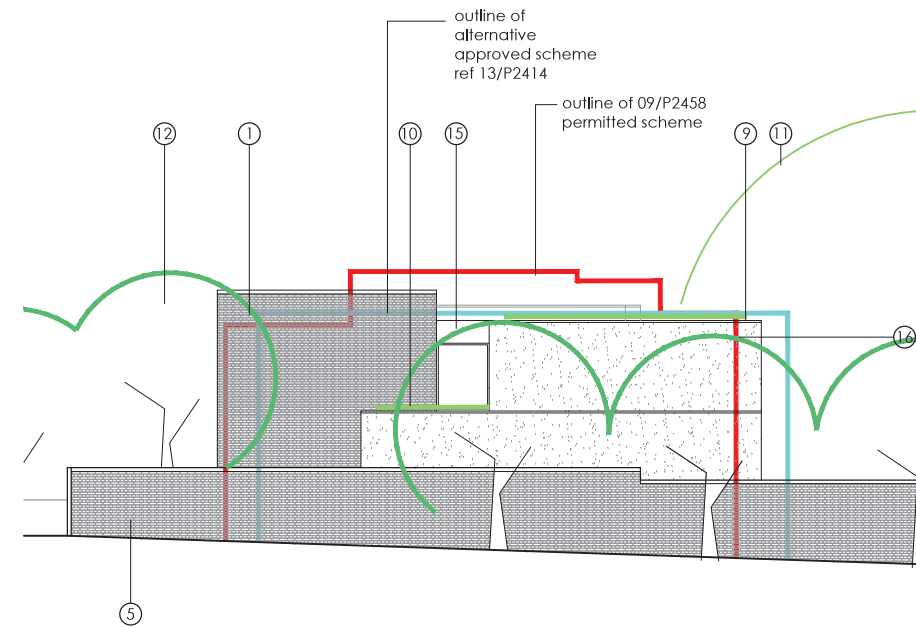
elevation to lincoln avenue [west] 1:100



elevation to rear garden [east] 1:100

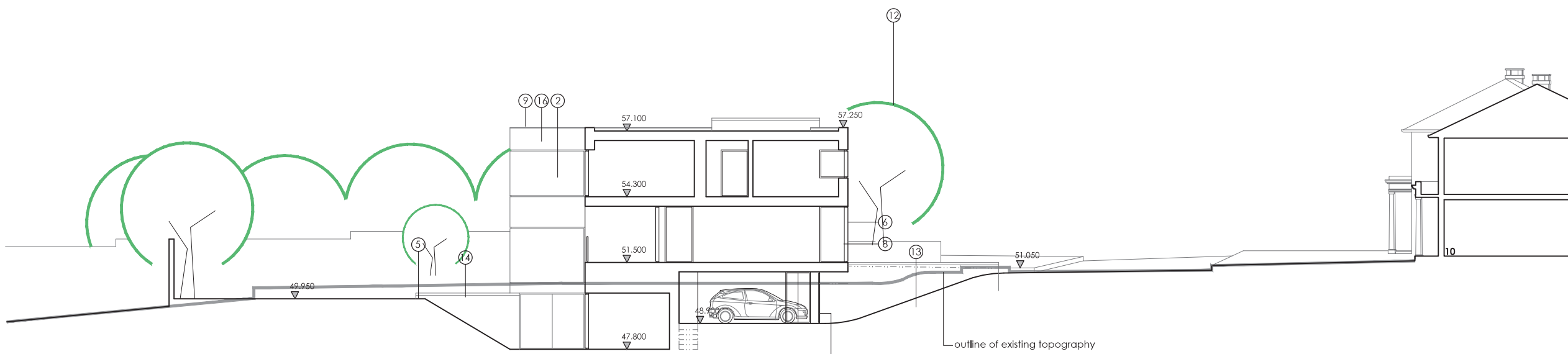


side elevation [north] 1:100



side elevation [south] 1:100

- materials:
1. fairfaced brickwork in buff colour (type: t.b.c.)
 2. aluminium framed windows in grey (type: t.b.c.)
 3. timber doors/ windows
 5. masonry walls + planters to match house
 6. timber louvres on mechanical device
 7. timber clad garage doors + walls (type: t.b.c.)
 8. steel + glass balustrades + steps down to garden
 9. aluminium copings in grey
 10. green roofs
 11. existing trees
 12. new trees
 13. permeable surfaced driveway + terraces
 14. masonry stairs up from courtyard
 15. obscured glazing
 16. white render finish
 17. render finish w. stainless steel planting grid for climbers
 18. external chimney flue



site section a.a. [east to west] 1:100

proposed

rev h	issued for planning approval	06.10.15
rev g	issued for planning approval	13.06.12
rev f	issued for comment	11.06.12
rev e	issued for comment	28.05.12
rev d	issued for comment	15.05.12
rev c	issued for comment	01.05.12
rev b	issued for planning consent	27.01.12
rev a	issued for planning consent	05.12.11

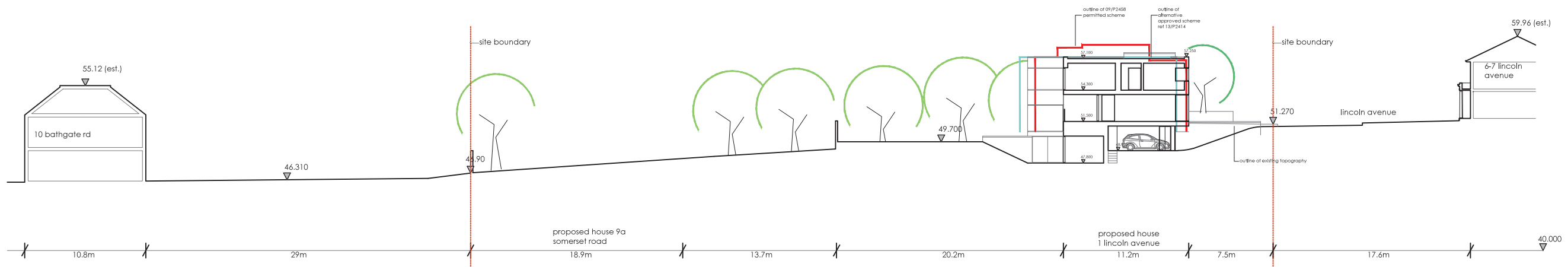
h2 architectur
12 LADDERSTILE RIDE KINGSTON-UPON-THAMES KT2 7LP 1.0845 053 C

PROJECT 0193
7 somerset road wimbledon sw19

CLIENT
kubik konstruktion

proposed (dwg no. 0193_p102)
elevations and site section

SCALE	DATE	DRAWN	REVISI
100@a1	sep 2011	mh	h



section a.a



section b.b

Page 72



key plan (n.t.s)

NOTES:
all dimensions and levels shown are approximate only.

Rev b issued for planning 06.10.15
Rev a issued for planning 23.09.15

h2 architecture
12 LADDERSTILE RIDGE KINGSTON-UPON-THAMES KT2 7LP 1.020 8974 8731

PROJECT 0193
7 - 9 somerset road wimbledon sw19

CLIENT
kubic construction

sketch (dwg no. 0193_sk059)
proposed site sections

SCALE DATE DRAWN REVISION
1:200@A1/1:400@A3 sep 15 mh 8