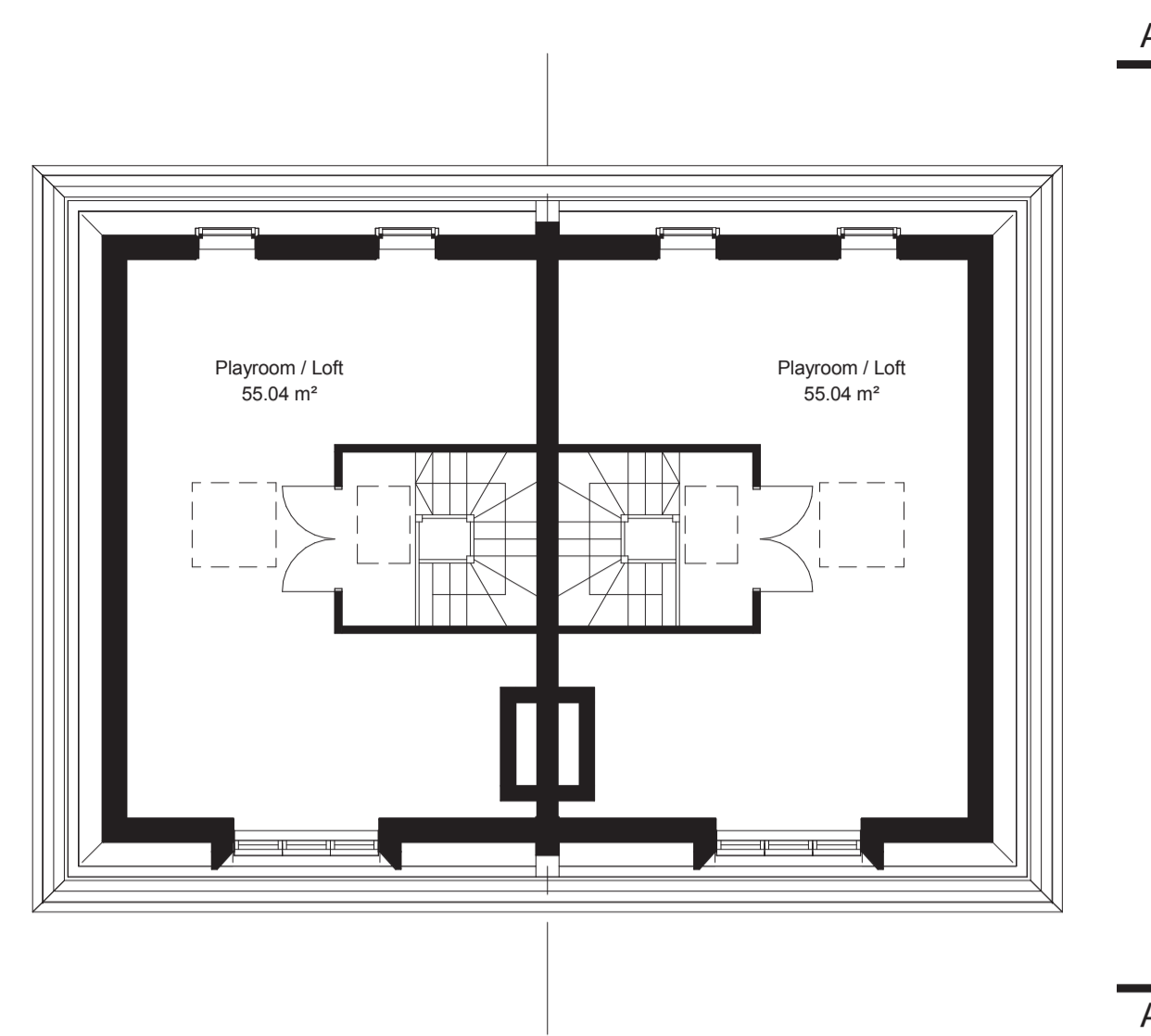
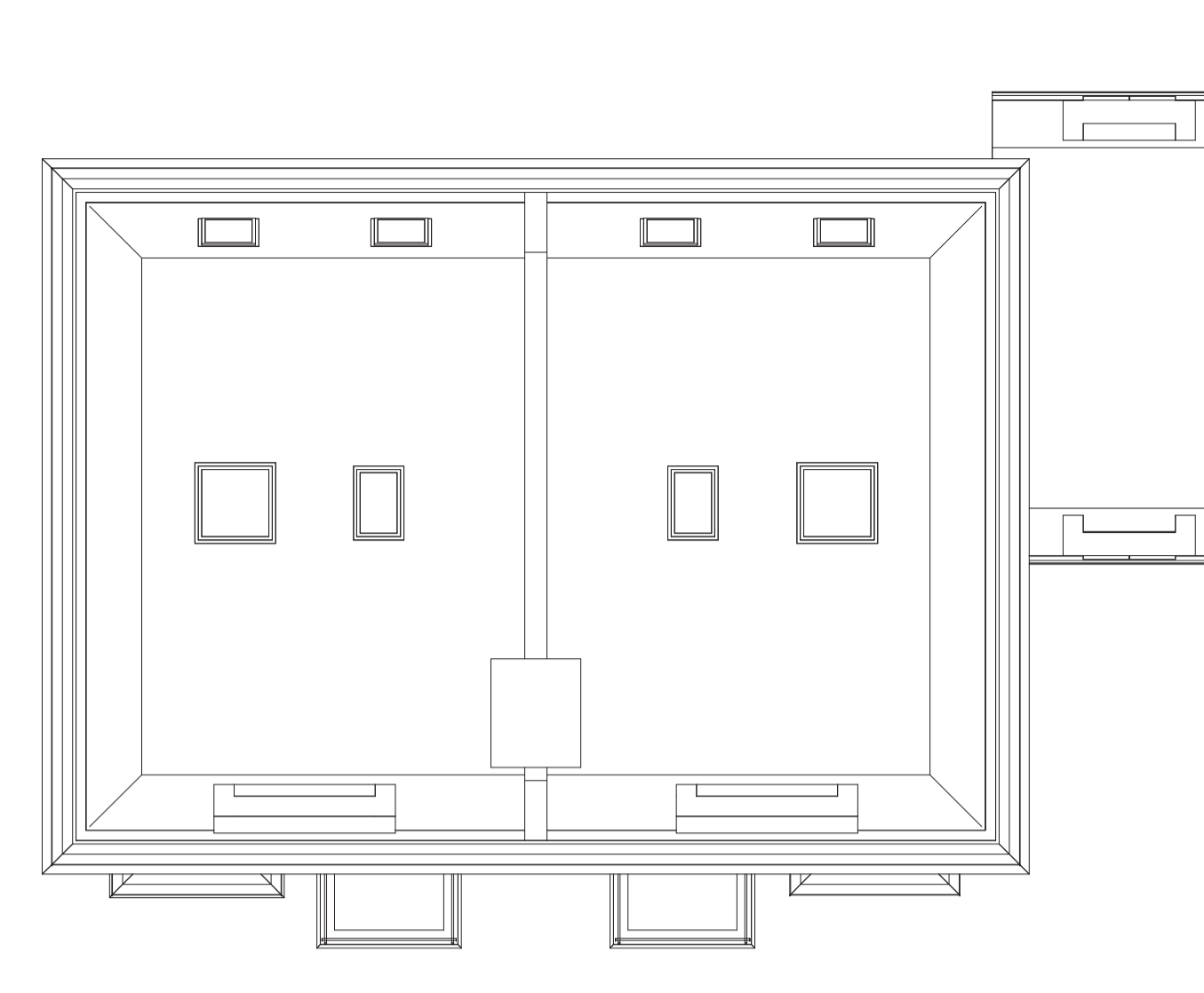


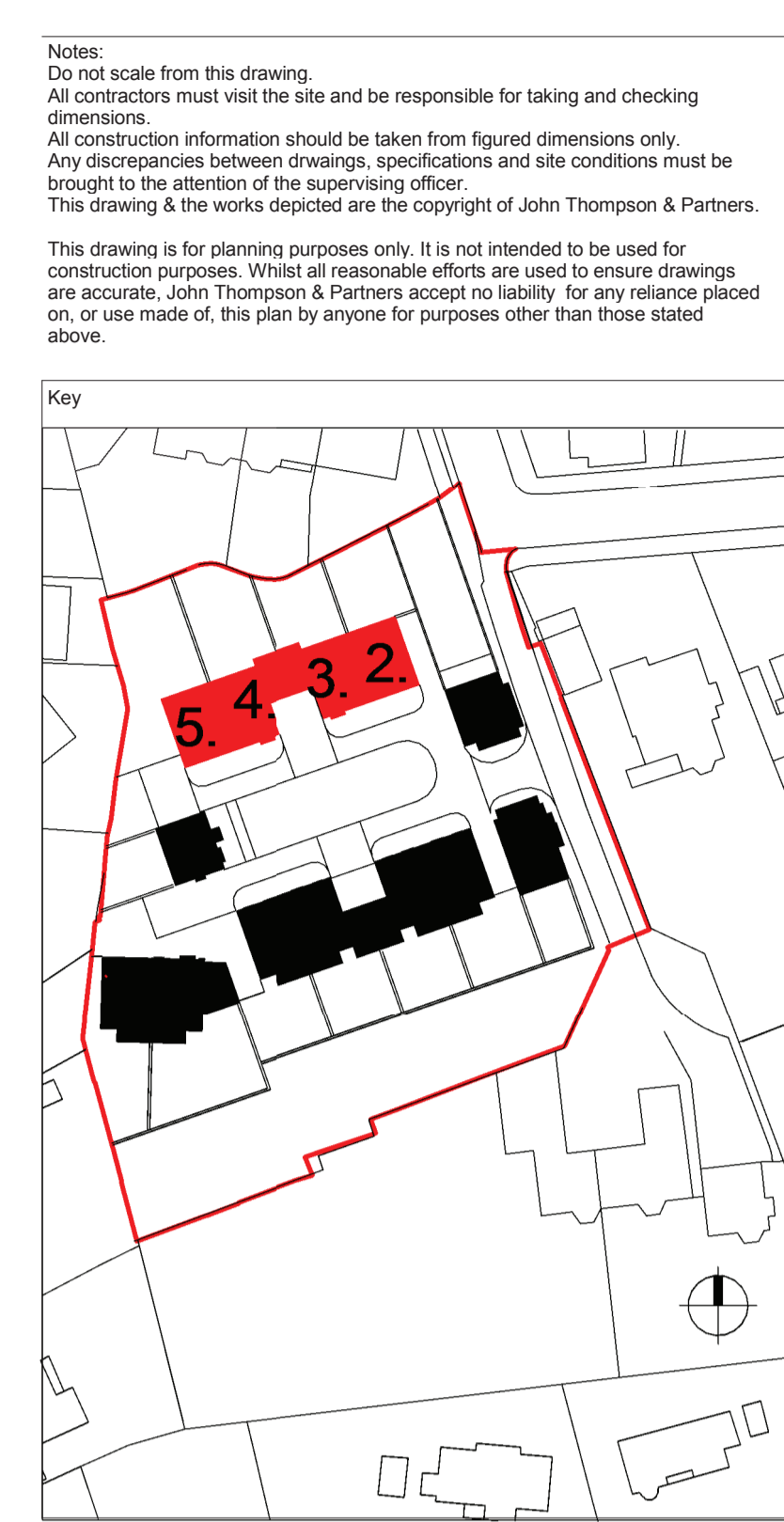
Ground Floor



Third Floor



Roof Plan



Area Schedule (GIA)		
Name	Level	Area
4 Bed 8 Person		
Plots 2, 5	Ground	64.99 m ²
Plots 2, 5	First	64.99 m ²
Plots 2, 5	Second	60.85 m ²
Plots 2, 5	Third	49.80 m ²
		240.64 m ²
4 Bed 8 Person		
Plots 3, 4	Ground	64.99 m ²
Plots 3, 4	First	85.20 m ²
Plots 3, 4	Second	60.85 m ²
Plots 3, 4	Third	49.80 m ²
		260.84 m ²

- Materials
1. Red Brick
 2. Yellow Buff Brick
 3. Stone
 4. Black RWP's/Goods
 5. White Window Frames
 6. Slate Roofs
 7. Metal Railings

PL01 05.05.15 Planning Issue LS/PC

Rev	Date	Description	Drawn / Chkd
		Planning	

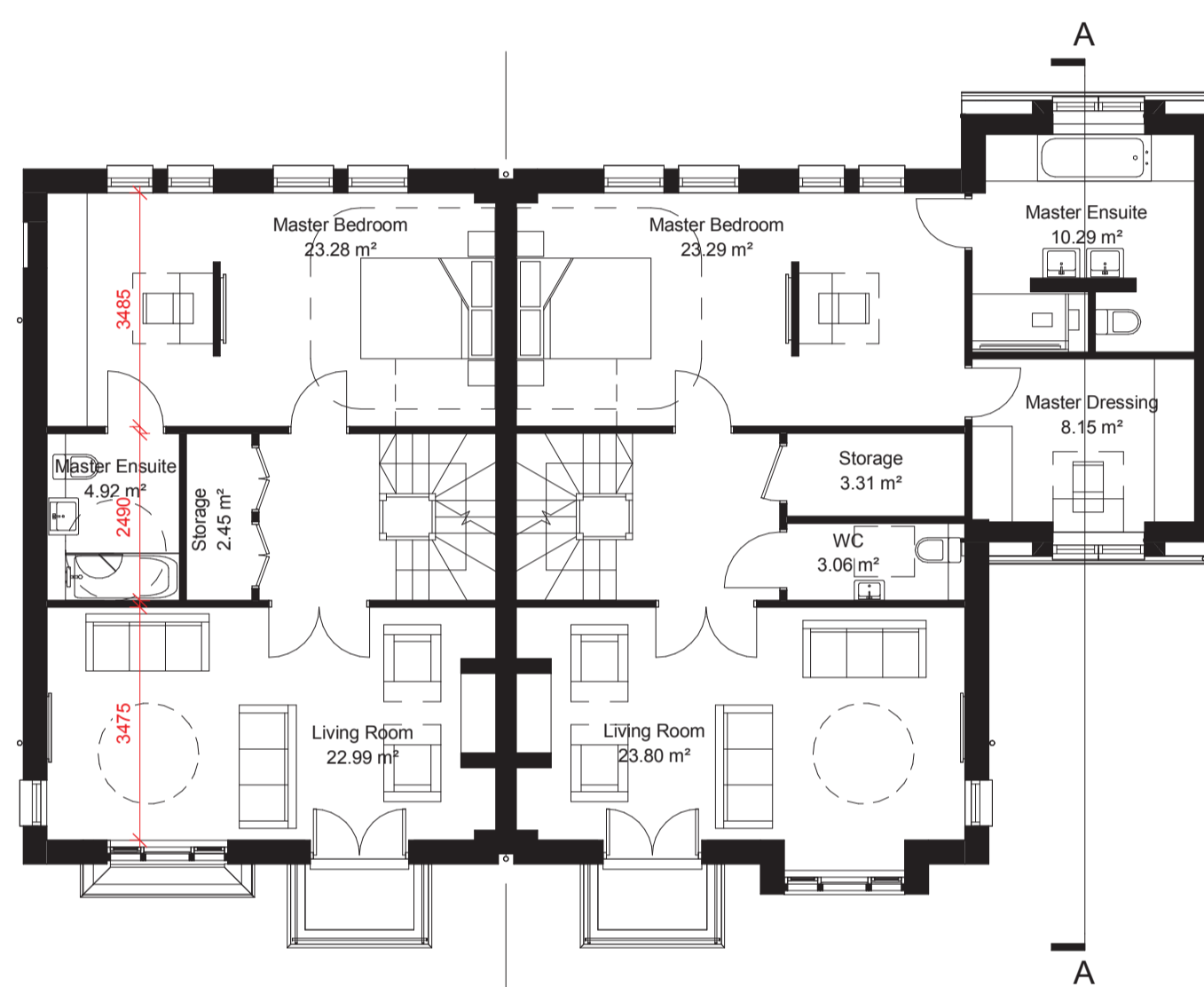
Client
Blossom House School



Project
Proposed Residential Development at Blossom House School
Drawing Title
Plots 2 to 5 - Proposed Floor Plans, Elevations and Sections

Scale @A1 1 : 100 Job Ref 00925
Drawing No. HT2_01 Revision: PL01
Scale Bar 0 50 100 150 200 250 mm

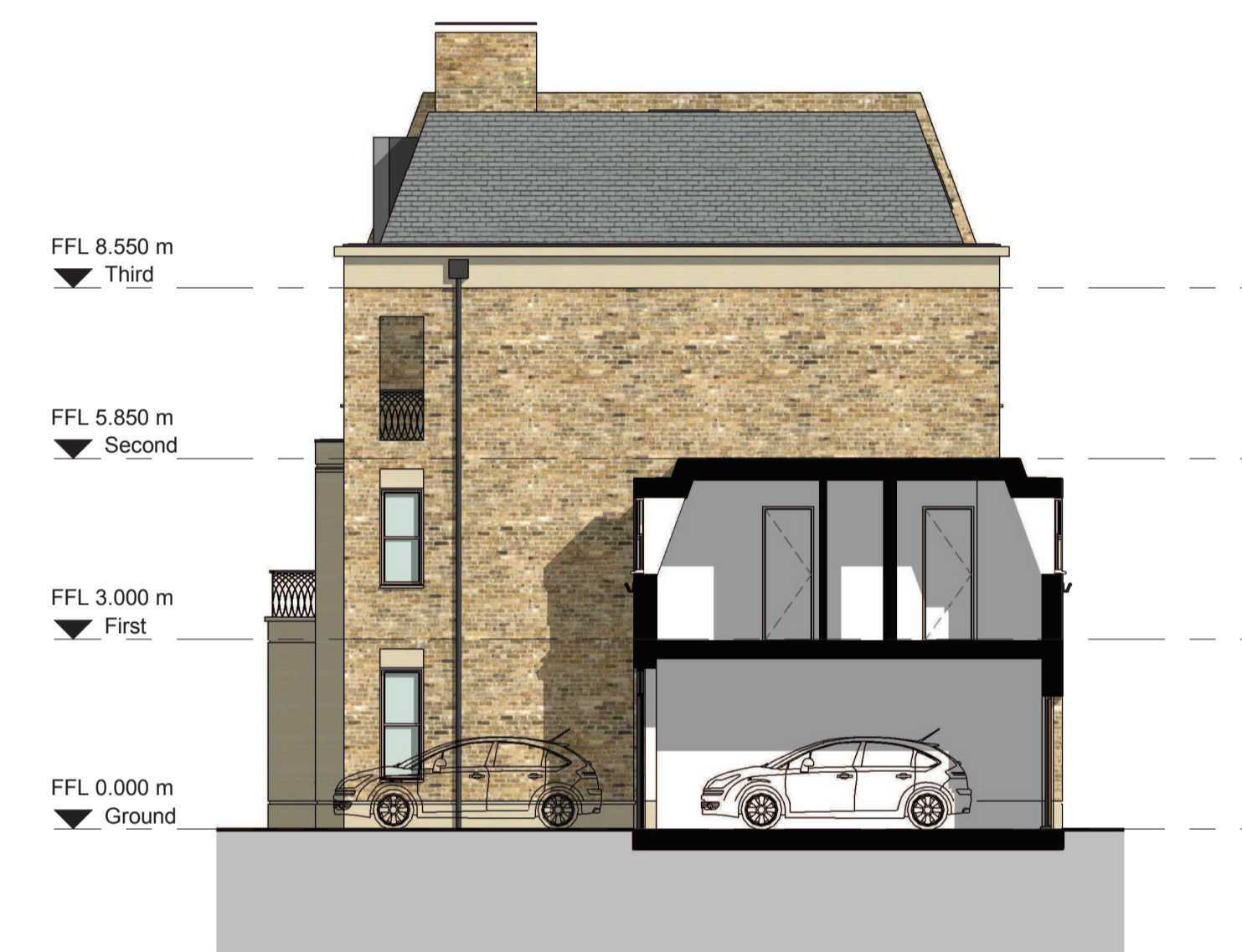
Page 95



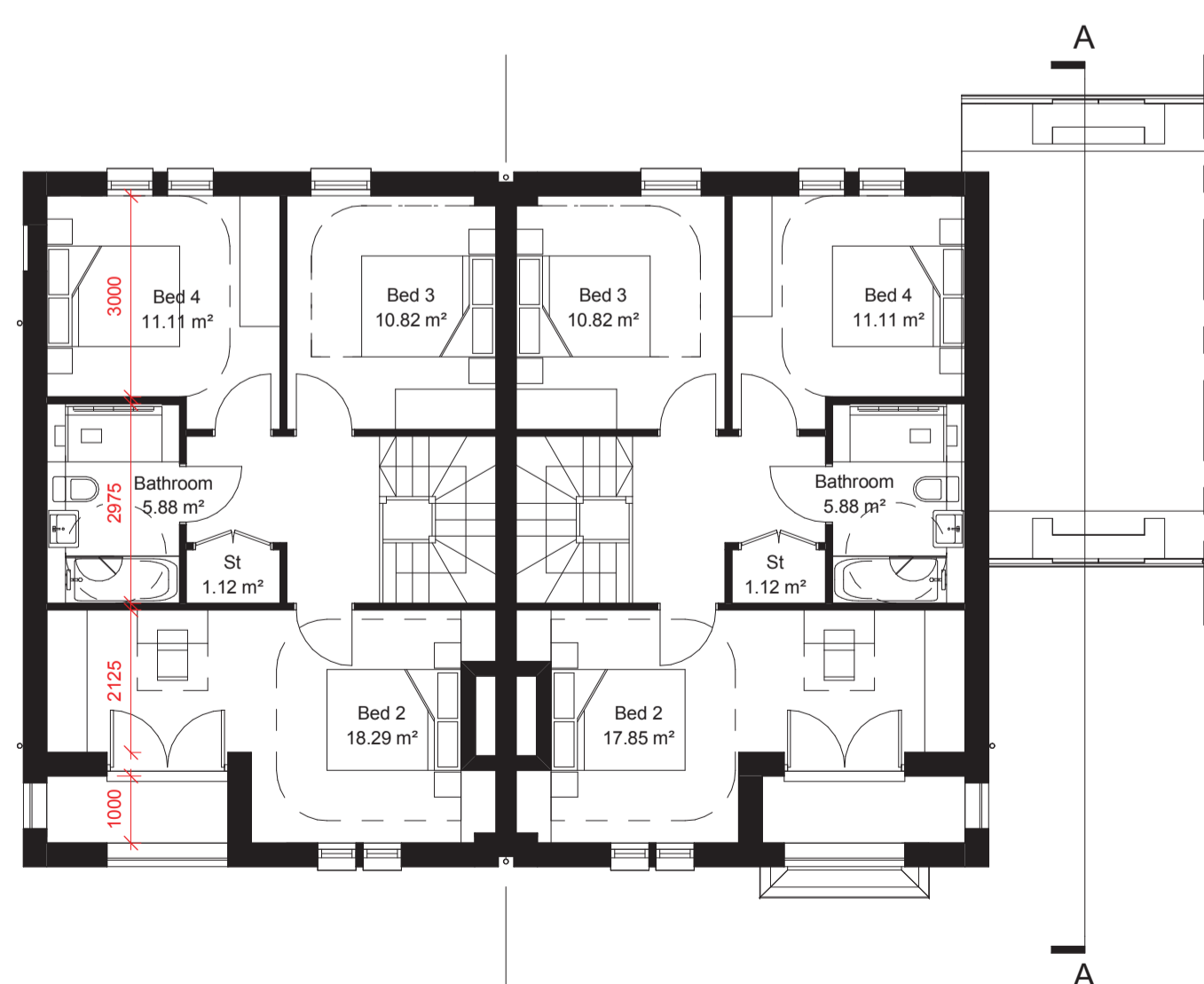
First Floor



Plot 4 and 5 South Elevation (Plot 2 and 3 handed)



Plot 4 East Elevation & Section A-A (Plot 3 Handed)



Second Floor



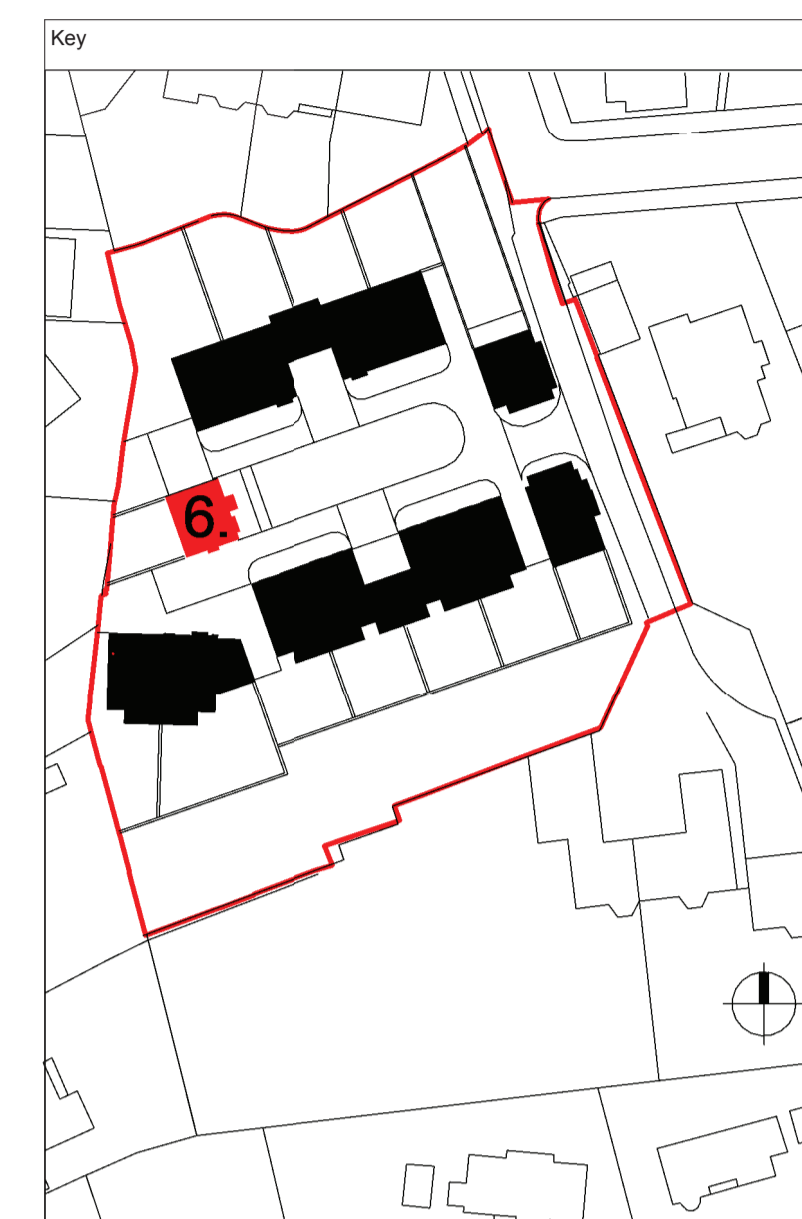
Plot 4 and 5 North Elevation (Plot 2 and 3 handed)



Plot 5 West Elevation (Plot 2 Handed)

Notes:
 Do not scale from this drawing.
 All contractors must visit the site and be responsible for taking and checking dimensions.
 All construction information should be taken from figured dimensions only.
 Any discrepancies between drawings, specifications and site conditions must be brought to the attention of the supervising officer.
 This drawing & the works depicted are the copyright of John Thompson & Partners.

This drawing is for planning purposes only. It is not intended to be used for construction purposes. Whilst all reasonable efforts are used to ensure drawings are accurate, John Thompson & Partners accept no liability for any reliance placed on, or use made of, this plan by anyone for purposes other than those stated above.



Area Schedule (GIA) Total	
Level	Area
Lower Ground Floor	52.65 m ²
Ground Floor	52.65 m ²
First Floor	52.65 m ²
Second Floor	37.34 m ²
	195.27 m ²

Materials

1. Red Brick
2. Yellow Buff Brick
3. Stone
4. Black RWP's/Goods
5. White Window Frames
6. Slate Roofs
7. Metal Railings

PL01 05.05.15 Planning Issue LS/IF

Rev	Date	Description	Drawn / Chkd
		Planning	

Client

Blossom House School

JOHN THOMPSON & PARTNERS

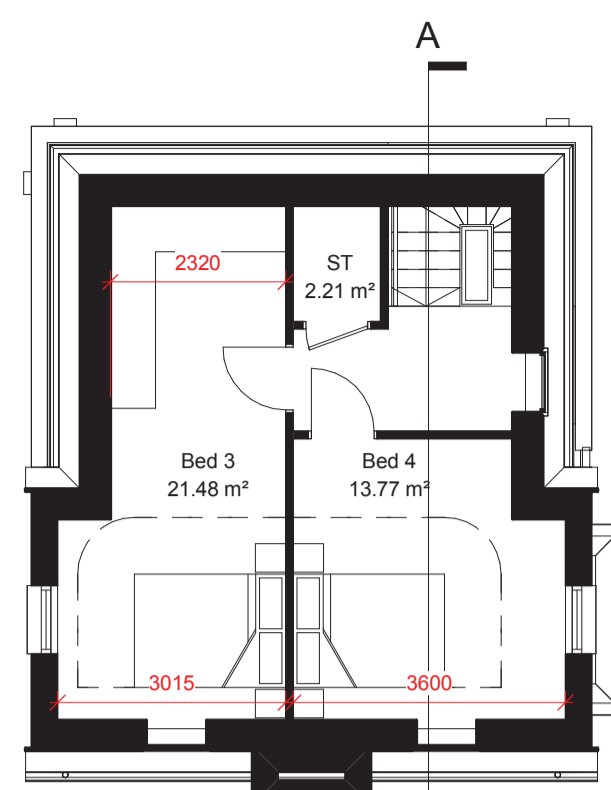
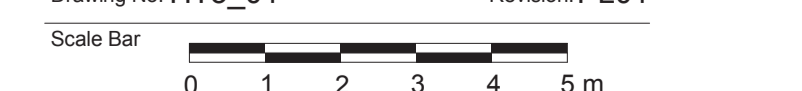


Project
 Proposed Residential
 Development at Blossom House
 School

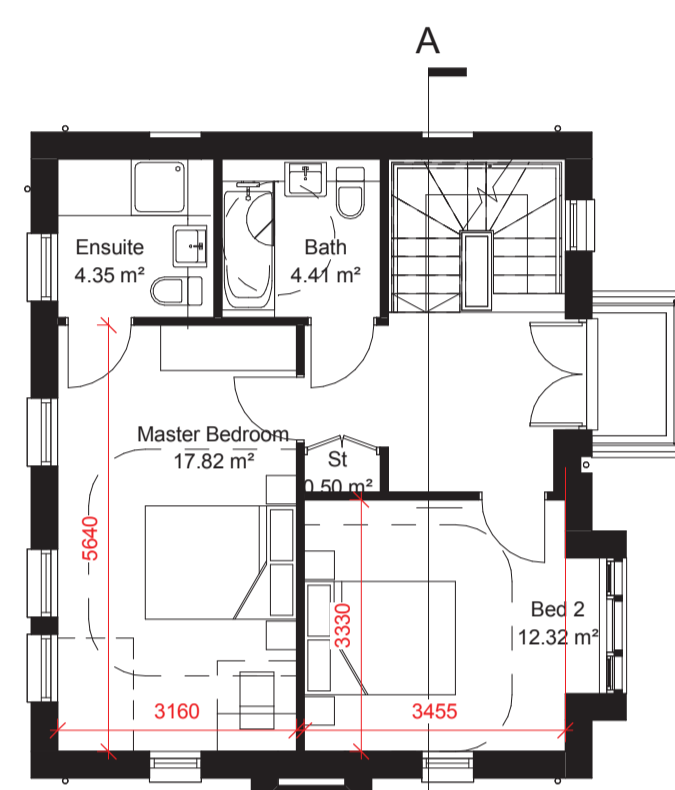
Drawing Title
 Plot 6 - Proposed Floor Plans,
 Elevations and Sections

Scale @A1 1 : 100 Job Ref 00925

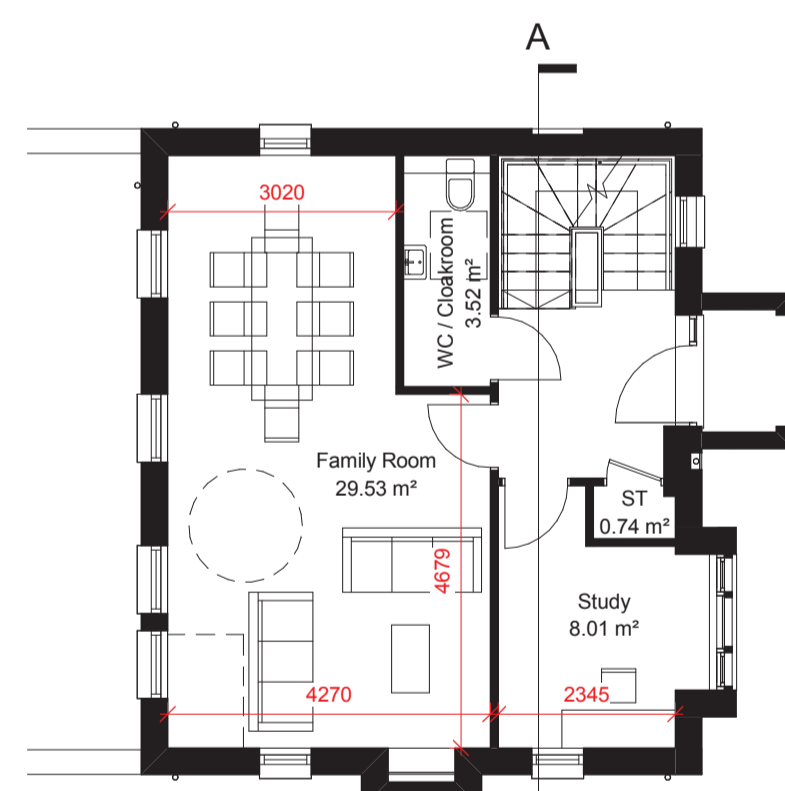
Drawing No. HT3_01 Revision.PL01



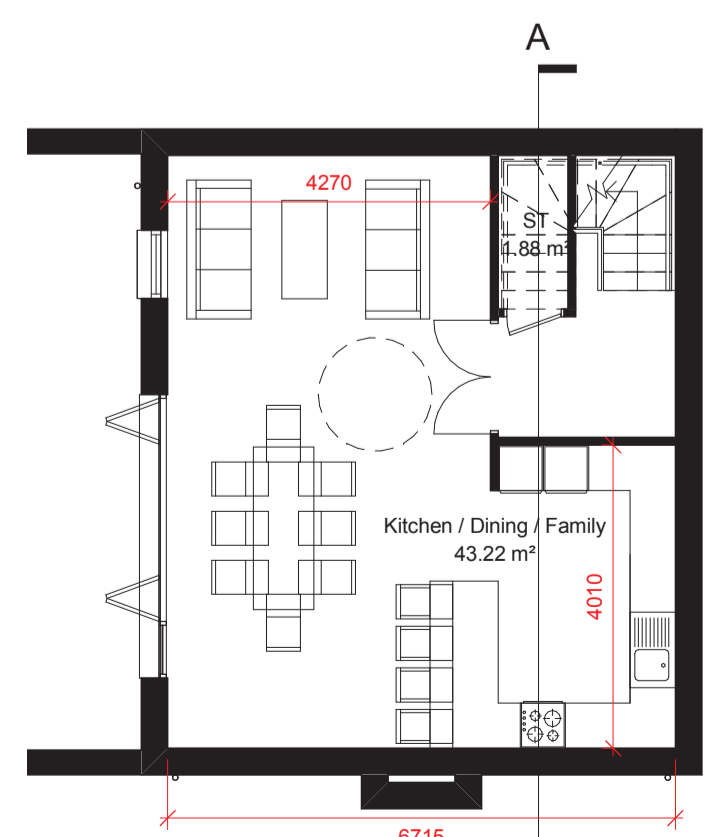
Second Floor



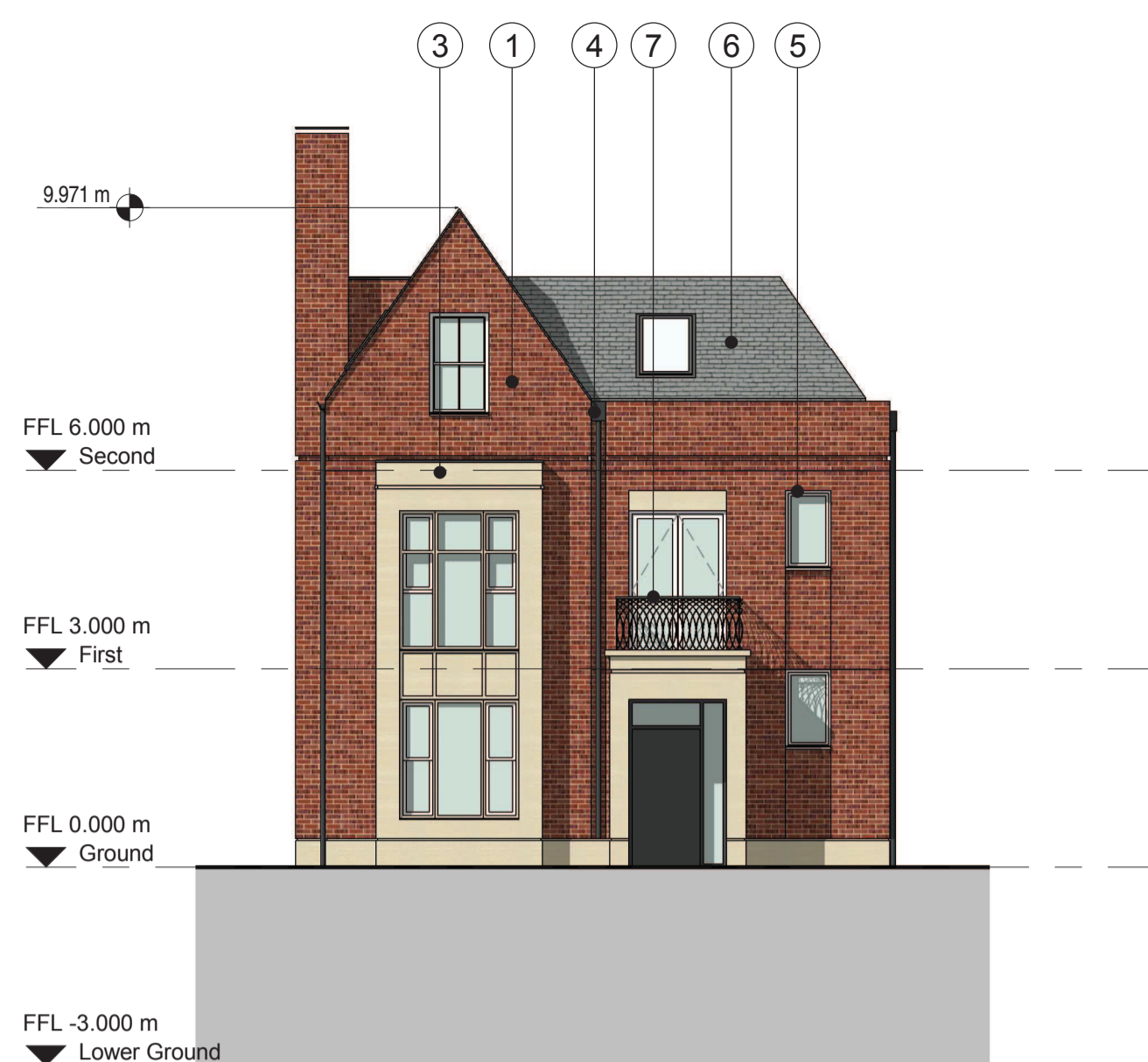
First Floor



Ground Floor



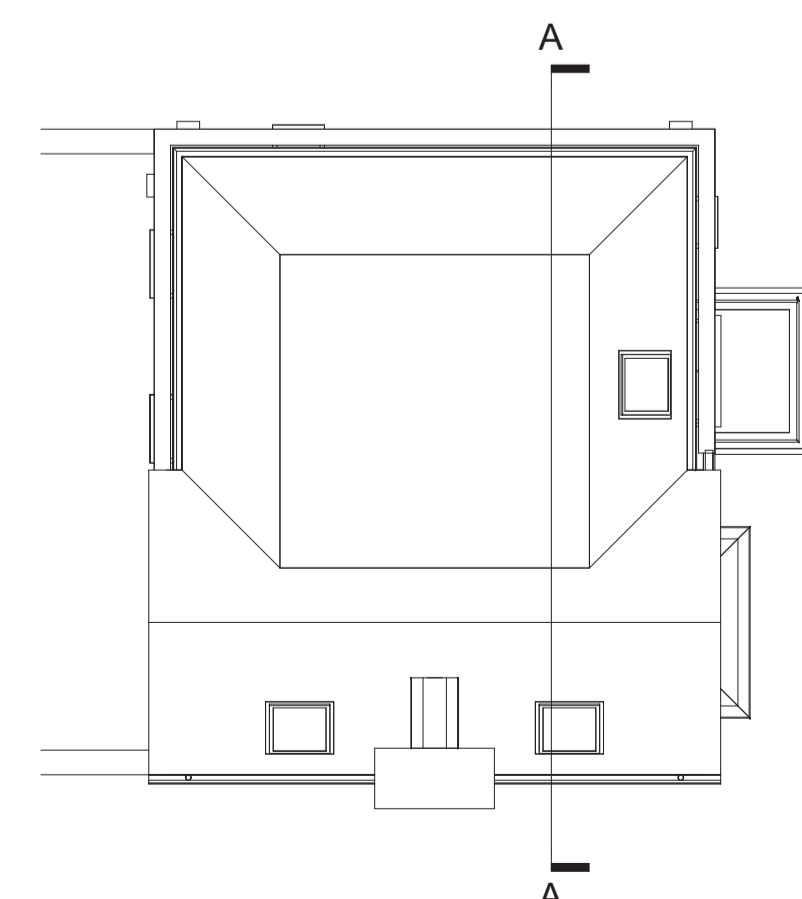
Lower Ground Floor



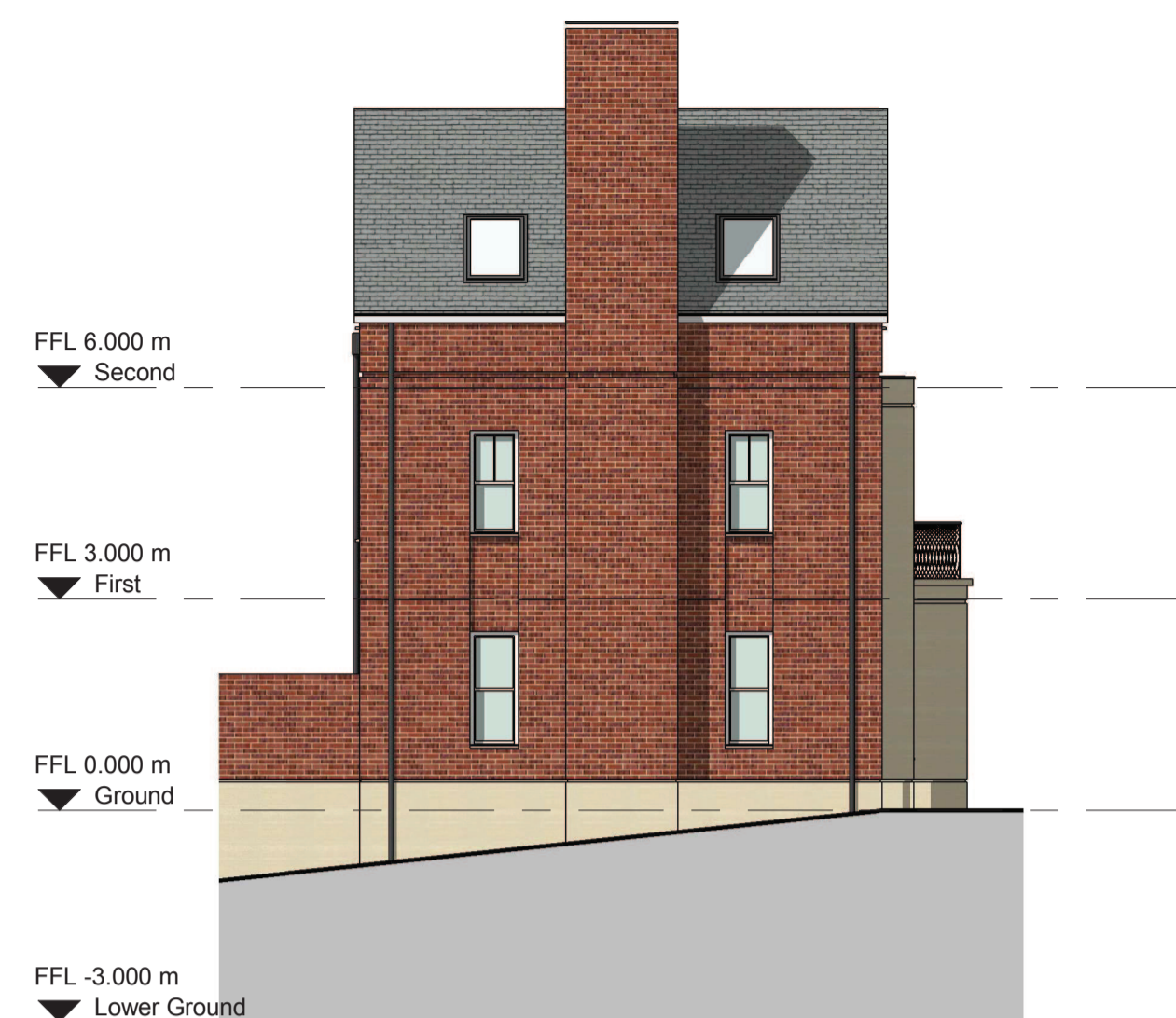
East



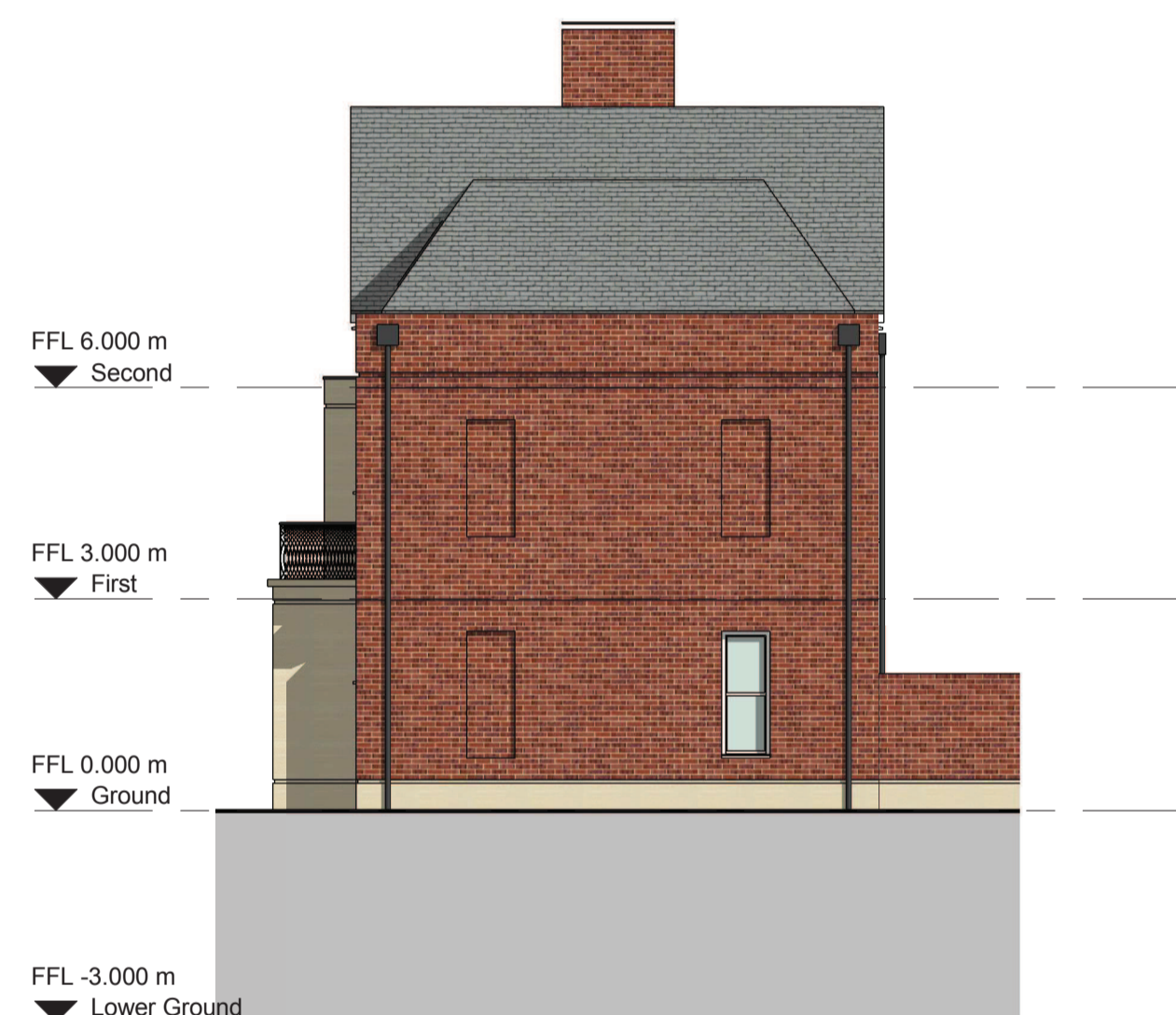
West



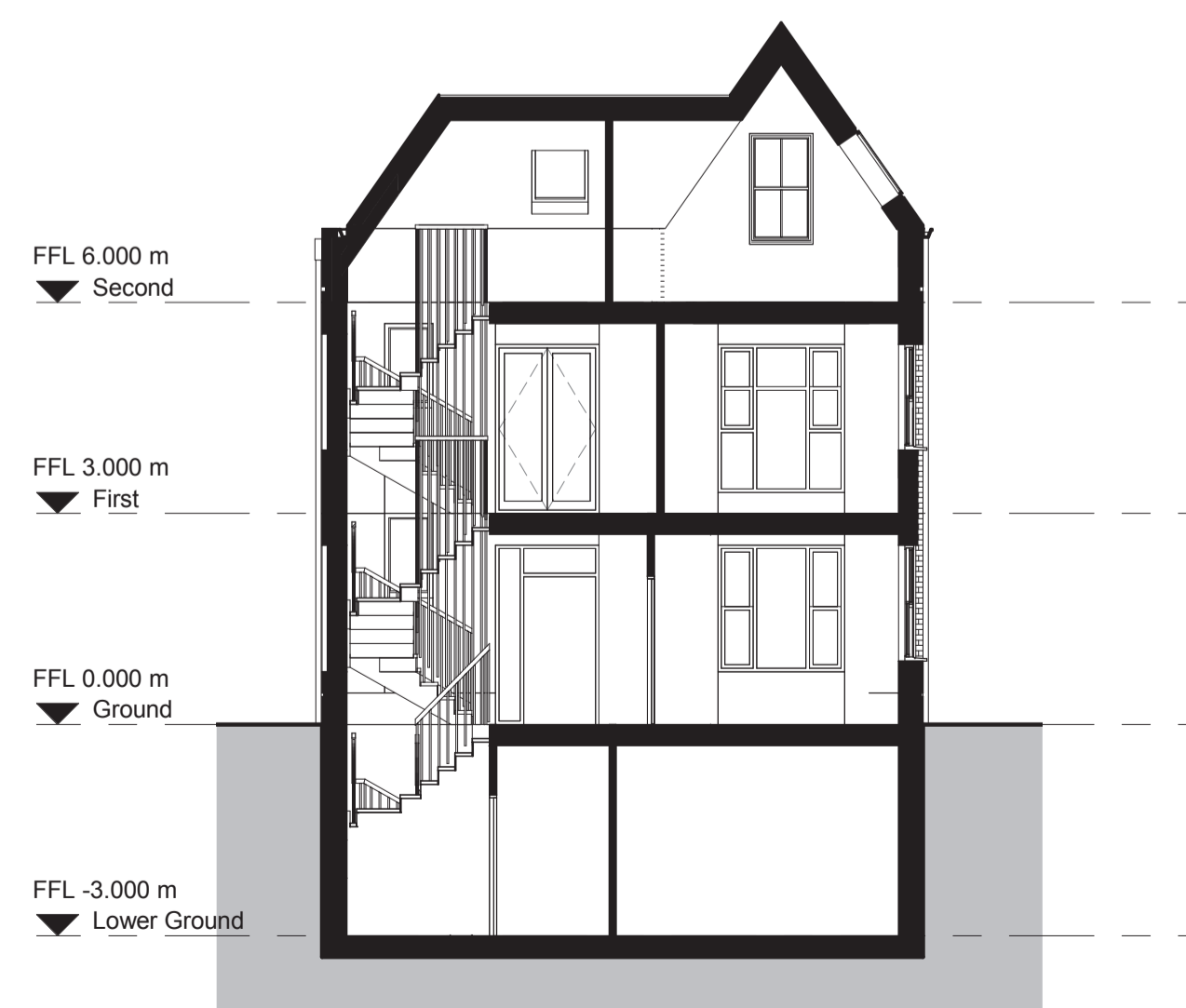
Roof Plan



South



North



Section A - A