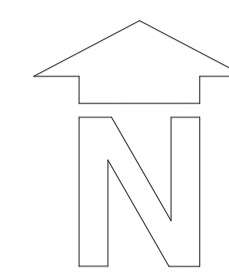


PROPOSED LANDSCAPING



Ground Cover Mix			
HEU PP	Heuchera Plum Pudding	2L	5/m2
BER5	Bergenia Silberlicht	2L	5/m2
VINC	Vinca minor la Grave	2L	5/m2
Ground cover			
AJU R	Ajuga Reptans	3L	5/m2
COR K	Cornus s. Keiseyi	3L	5/m2
HYP M	Hypericum moserianum	3L	5/m2
SHRUBS			
ABG	Abellaxgrandi flora	10L	2/m2
BERT	Berberis t.t. atropurpurea	10L	1/m2
CHOT	Choisya t.Sundance	10L	2/m2
CORE	Cornus alba Elegantislima	10L	1/m2
COR5P	Cornus Siberian Pearls	3L	3/m2
CORME	Cornus sanguinea Midwinter Fire	10L	3/m2
COTRP	Cotinus coggygria Royal Purple	10L	1/m2
EUOSQ	Euonymus Silver Queen	10L	2/m2
OLEM	Olearia Macrodonata Major	10L	1/m2
PHORR	Phytolaxia F. Red Robin	10L	2/m2
PYR	Pyracantha Rogersiana	2L	1/m2
VIBC	Viburnum Carlesii	5L	2/m2
VIBT	Viburnum Tinus	10L	1/m2
WEIPP	Weigela F.Purpurea	10L	3/m2
TREES			
BETE	Betula Pendula	10/12	165
HEDGING CAR			
	Carinus betulus	80/100	5/m2
CLIMBERS			
LONC	Lonicera Halliana	2L	2/m2
CLEM C	Clematis Mrs Cholmondeley	2L	2/m2
CLEM J	Clematis s Jackmanii	2L	2/m2
ROS GD	Rose Gloire de Dijon	4L	1/m2
ROS C	Rose Compassion	4L	1/m2
Standard Roses			
SR CM	"Champagne Moment"	4L	1/m2
SR HC	"Hot Chocolate"	4L	1/m2
SR R	"Rachel"	4L	1/m2
SR ST	"Super Trouper"	4L	1/m2

Concrete Block pavers - To be placed on 50mm thick gravel laying course over 200mm min open graded sub-base placed on permeable geotextile fabric.

Paving slabs over soil - To be placed on 50mm thick gravel laying course over 200mm min open graded sub-base placed on permeable geotextile fabric.

Paving slabs over concrete deck - To be supported by proprietary slab system with under slab drainage.

Grasscrete - To be placed on suitable Geotextile over 200mm minimum type 3 aggregate sub base on a second Geotextile layer. Planting cells to be partially filled with a mixture of graded soil, alpine gravel and sand with added lime to suit prostrate Thyme. Cells to be planted with varieties of prostrate Thyme and top dressed with Alpine gravel so that the plants are in the void between the concrete so that they are not crushed by pedestrian or vehicular traffic.

Rainwater harvesting system to capture surface water from roofs and rear terrace for use as "grey water" for WCs and garden watering. Overflow water to be disposed of in the rear garden by means of storm cells and bore holes to meet statutory requirements.

Surface water from driveway and parking area to pass through an approved petrol interceptor before passing into the overflow water disposal system.

Grasscrete area allows disabled access to front door from any car door, or from the rear of a wheel chair ramped vehicle.

Hard landscaping materials:
 Paving slabs to be Marshalls "St George Smooth Ground Flag Paving" 400mm x 400mm x 35mm in "Oyster Beige" colour.
 Block Paving to be Marshalls "Original Tegula Priora" Concrete Block Permeable Paving in "Harvest" colour.
 Concrete vehicle ramp to be finished with a special proprietary anti slip coating suitable in a similar colour to the Blocks.
 Concrete pedestrian ramps to be finished with a proprietary anti slip coating suitable in a similar colour to the Blocks.

notes:
 1. This drawing is copyright and must not be copied or reproduced without written consent.
 2. The builder is to work to figured dimensions and must not scale the drawing.

revisions:
 A: ADDITIONAL NOTES 28-6-15
 B: FRONT LIGHTWELLS REDUCED 27-7-15

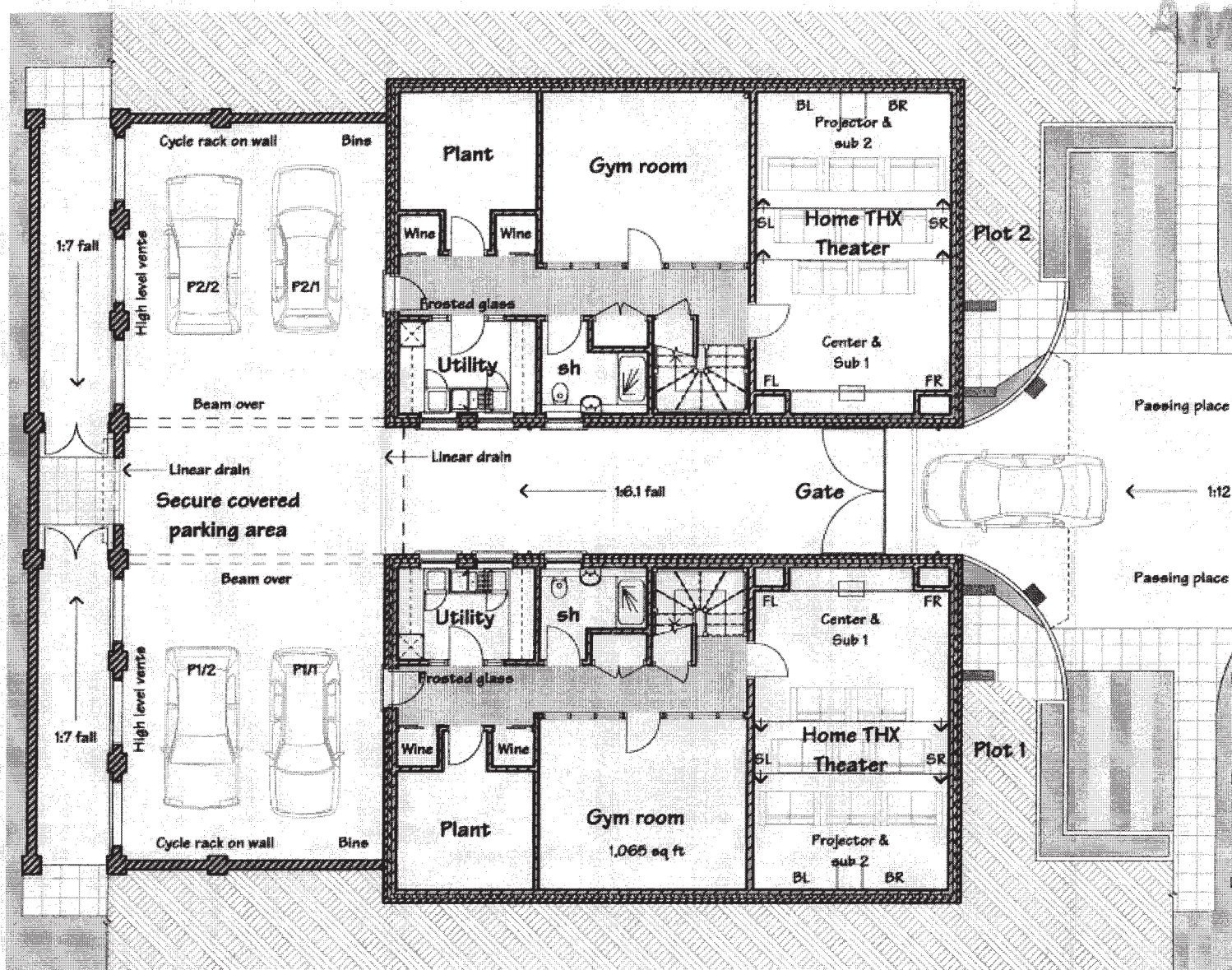
ronald fender designs
 architectural and interior design consultants
 focus house first floor, 23-25 bell street, reigate, surrey. tel. (01737 228487)

title:
 46 BARHAM ROAD
 LONDON, SW20 0ES
 PROPOSED LANDSCAPING

drw no: RF40/67B
 scale: 1:100 @ A1
 date: 26-3-15
 drawn by: NGH

LOWER GROUND FLOOR PLAN

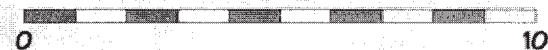
13/P3&27. CURRENT APPROVAL LOWER GROUND FLOOR



ENDED



RECEIVED
- 6 MAR 2014



Page 50
Scale: 1:100
Scale: 1:50
Scale: 1:20

Index	Revision: D. GENERAL UPDATE 31/9/13 E. BUILDING REDUCED IN SIZE 01/12/14 F. UNITS CLOSER TOGETHER 9/9/14
-------	-------------------------------------------------------------------------------------------------------------------

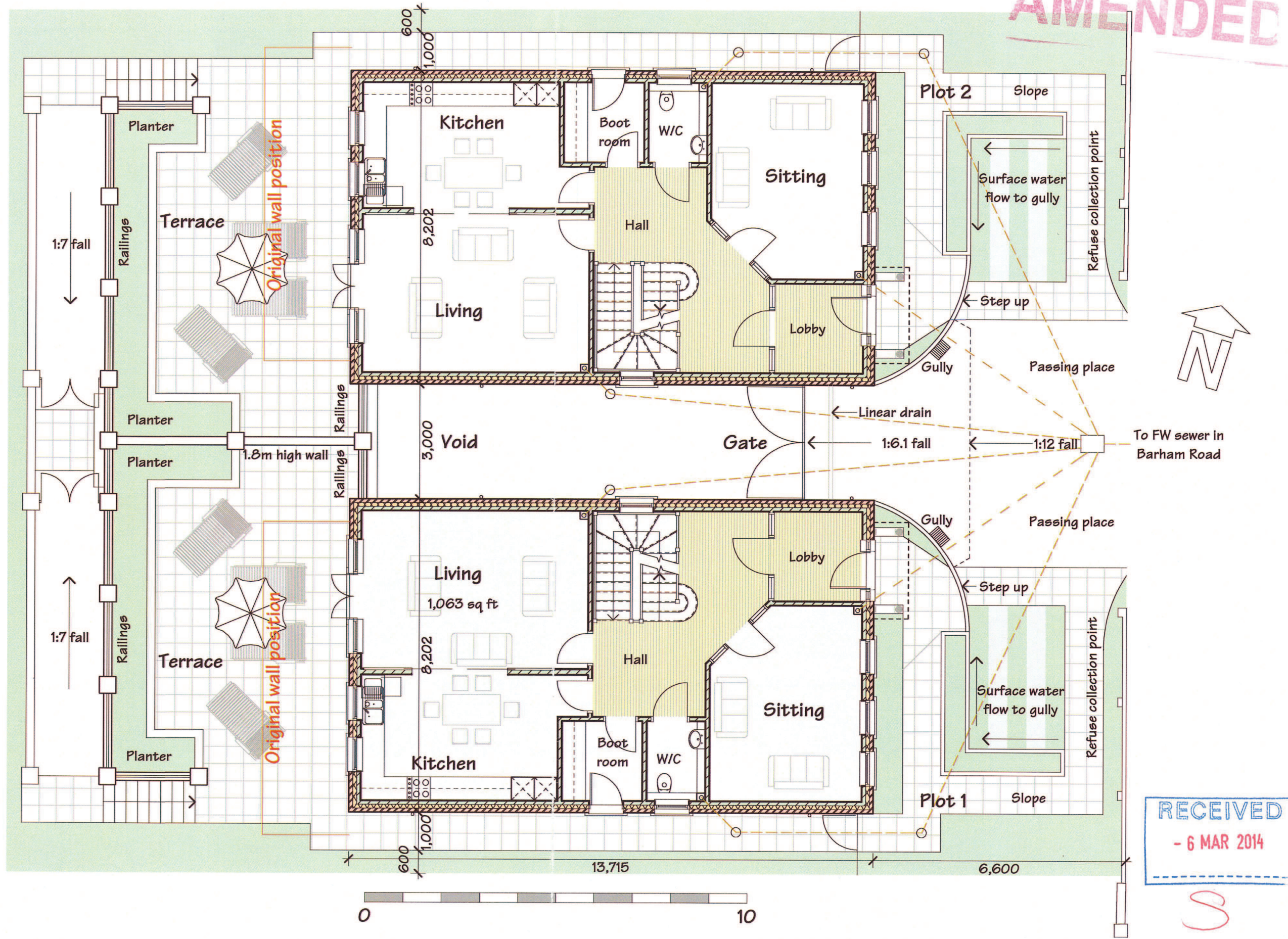
ronald fender designs
 40 BARKHAM ROAD
 LONDON, SW20 0ES
 020 8750 0000
 www.ronaldfenderdesigns.co.uk

File:	40 BARKHAM ROAD LONDON, SW20 0ES LOWER GROUND FLOOR PLAN	Job no:	RT35/04F 1:100 GP A3 JULY 09/13 NGH
Scale:		Drawn by:	

Lower Ground Floor - Awarded 6/6

GROUND FLOOR PLAN

AMENDED



Scale: 1:100
 Scale: 1:50
 Scale: 1:20
 Page 51

RECEIVED
 - 6 MAR 2014

ronald fender designs
 architectural and interior design consultants
 focus house first floor, 23-25 bell street, reigate, surrey tel: (01737 226487)

file: 46 BARHAM ROAD LONDON, SW20 0ES GROUND FLOOR PLAN
 drg no: RF35/05F
 scale: 1:100 @ A3
 date: JULY 2013
 drawn by: NGH

notes:
 revisions:
 D: GENERAL UPDATE 11-8-13
 E: BUILDING REDUCED IN SIZE 11-2-14
 F: UNITS CLOSER TOGETHER 5-3-14

Ground Floor-Amended-0603-16

This page is intentionally left blank