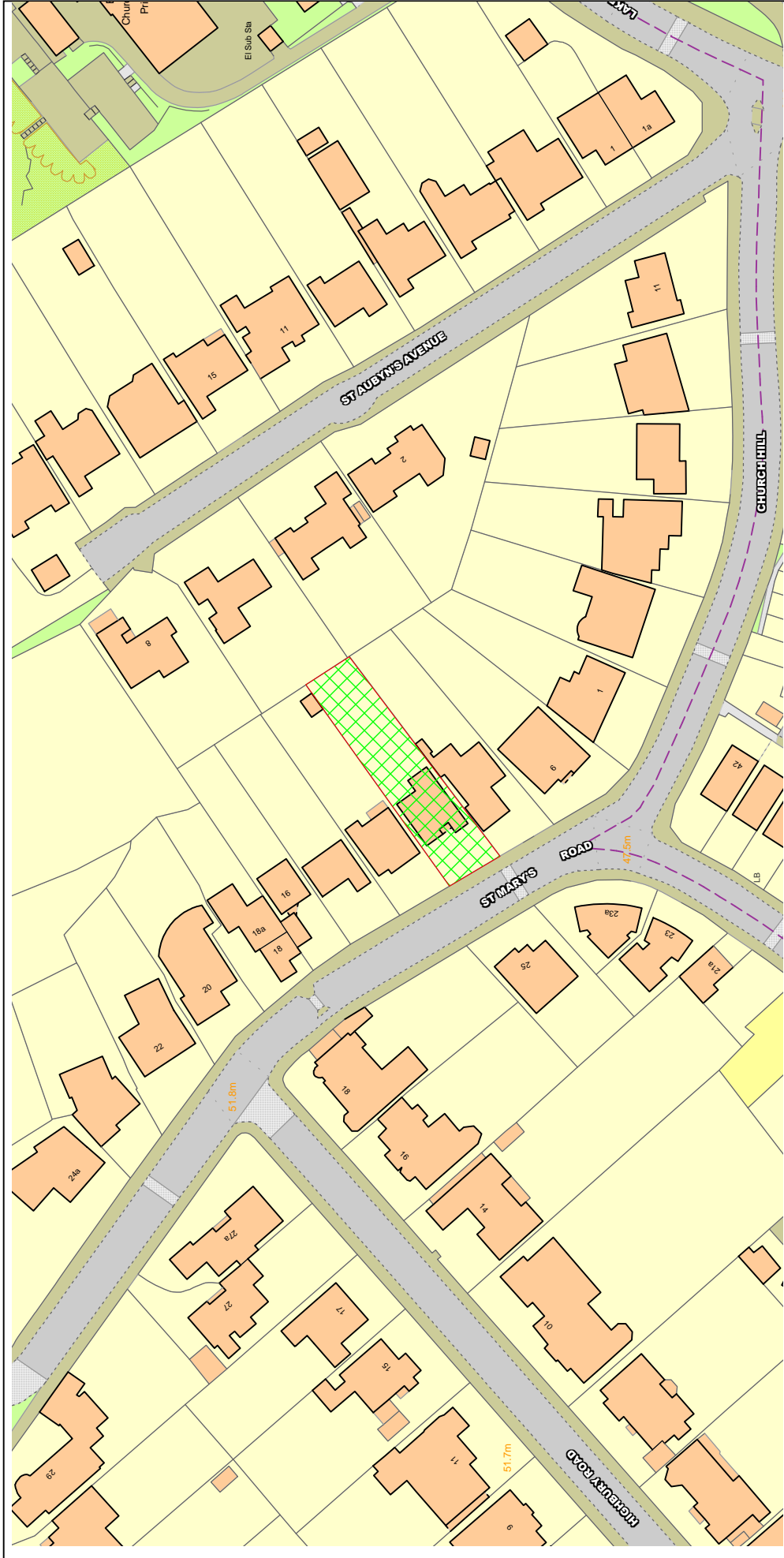


# NORTHGATE SE GIS Print Template



Text Details **10 St Marys Road**

This material has been reproduced from Ordnance Survey digital map data with the permission of the controller of Her Majesty's Stationery Office, © Crown Copyright.

**NOTES:**

Site Area: 338m<sup>2</sup>

UNUSUAL RISKS IDENTIFIED IN CDM RISK ASSESSMENT:

Rev	Date	Revision	By

**JOB:** 10 St Mary's Road, Wimbledon, London SW19

**DWG:** Proposed Elevations

**JOB NO.:** 601

**DWG NO.:** 601/P01

**REVISION:**

**SCALE:** 1:100 @ A1

**DATE:** Sept 2015

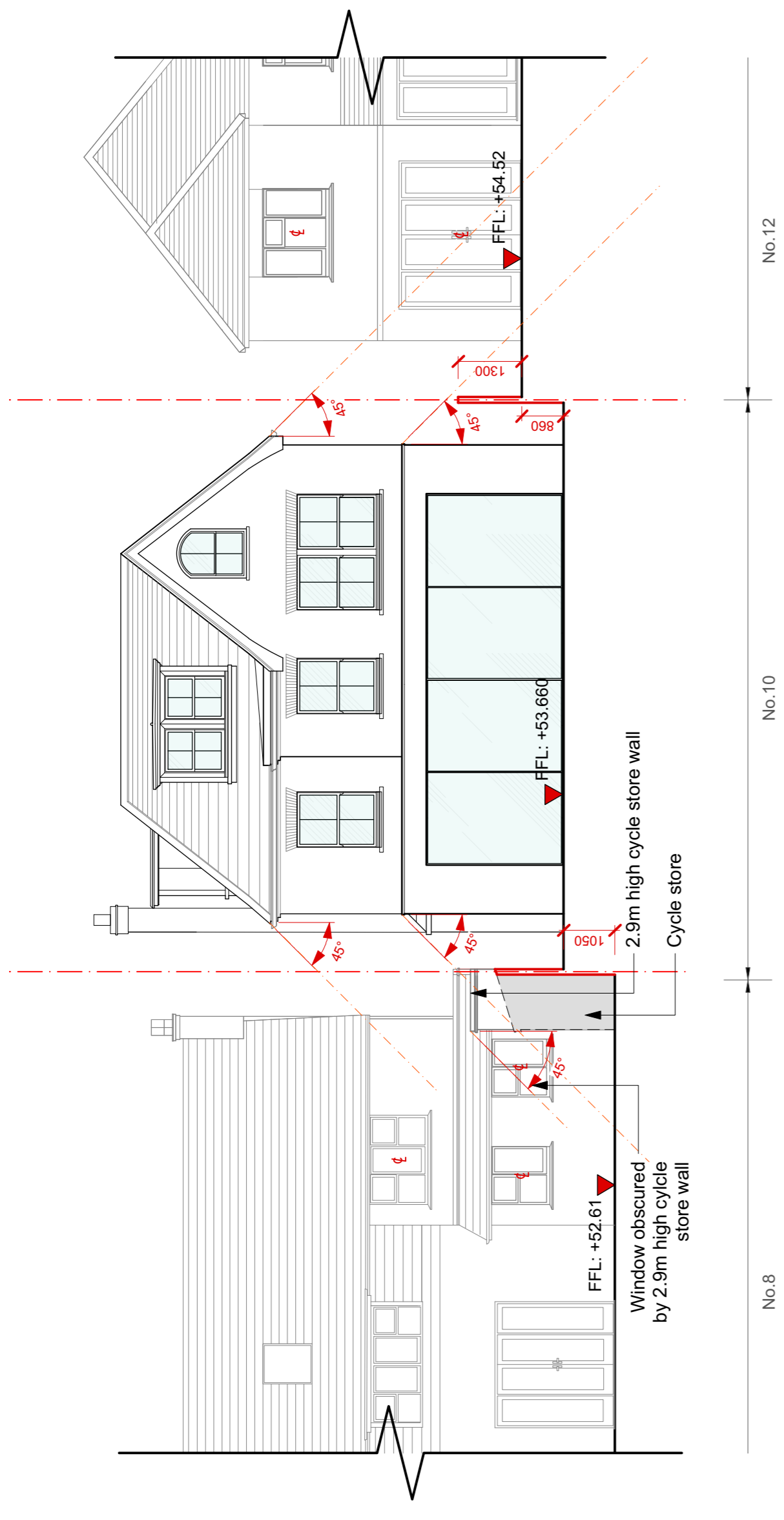
**DRAWN BY:** KR

**CHECKED BY:** HH

**DWG STATUS:** **PLANNING**

Do not scale this drawing  
All dimensions to be checked on site  
Holden Harper copyright reserved

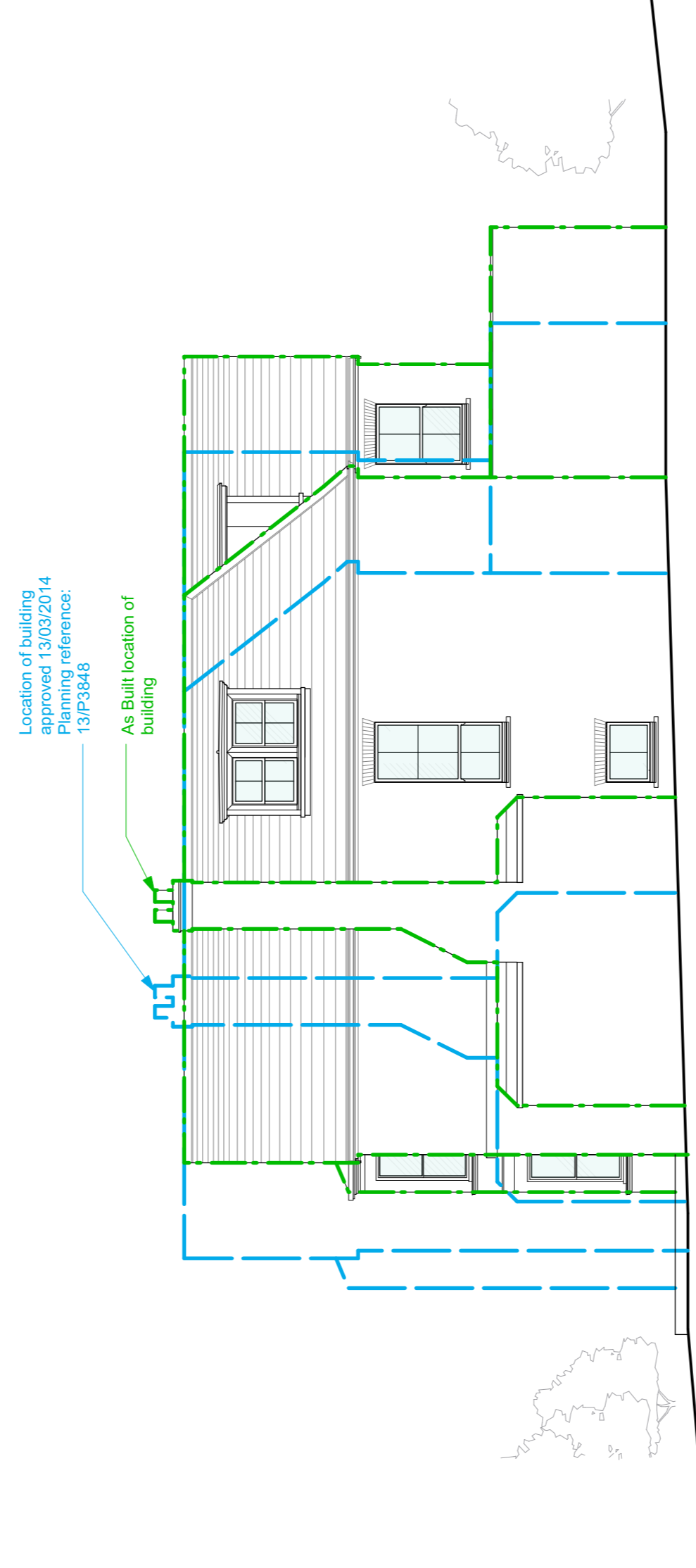
**Holden Harper**  
 chartered  
 architects & engineers  
 26 High Street Wimbledon  
 London SW19 5BY  
 Telephone: 020 8946 5502  
 Email: arch@holdenharper.co.uk



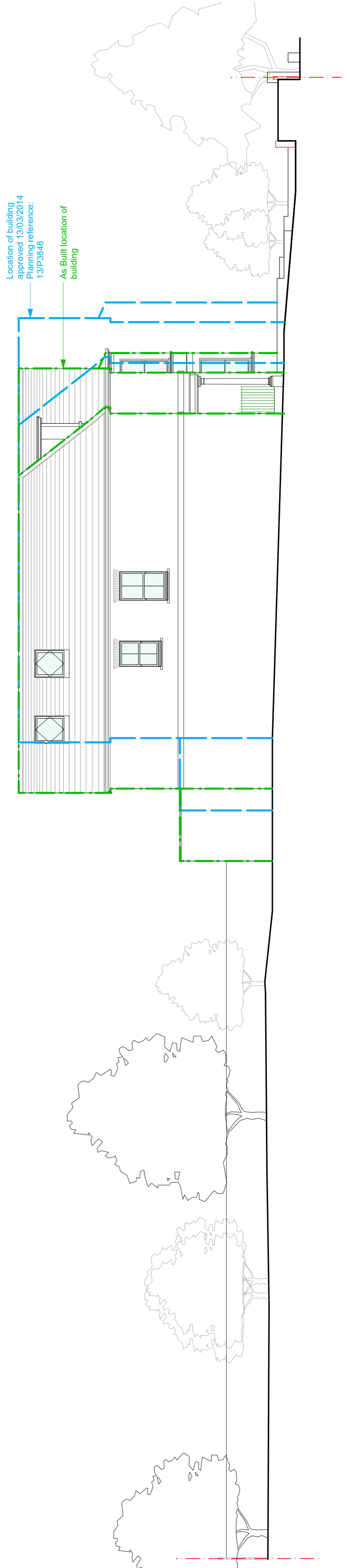
**REAR ELEVATION**



**FRONT ELEVATION**



**SIDE ELEVATION**



**SIDE ELEVATION**