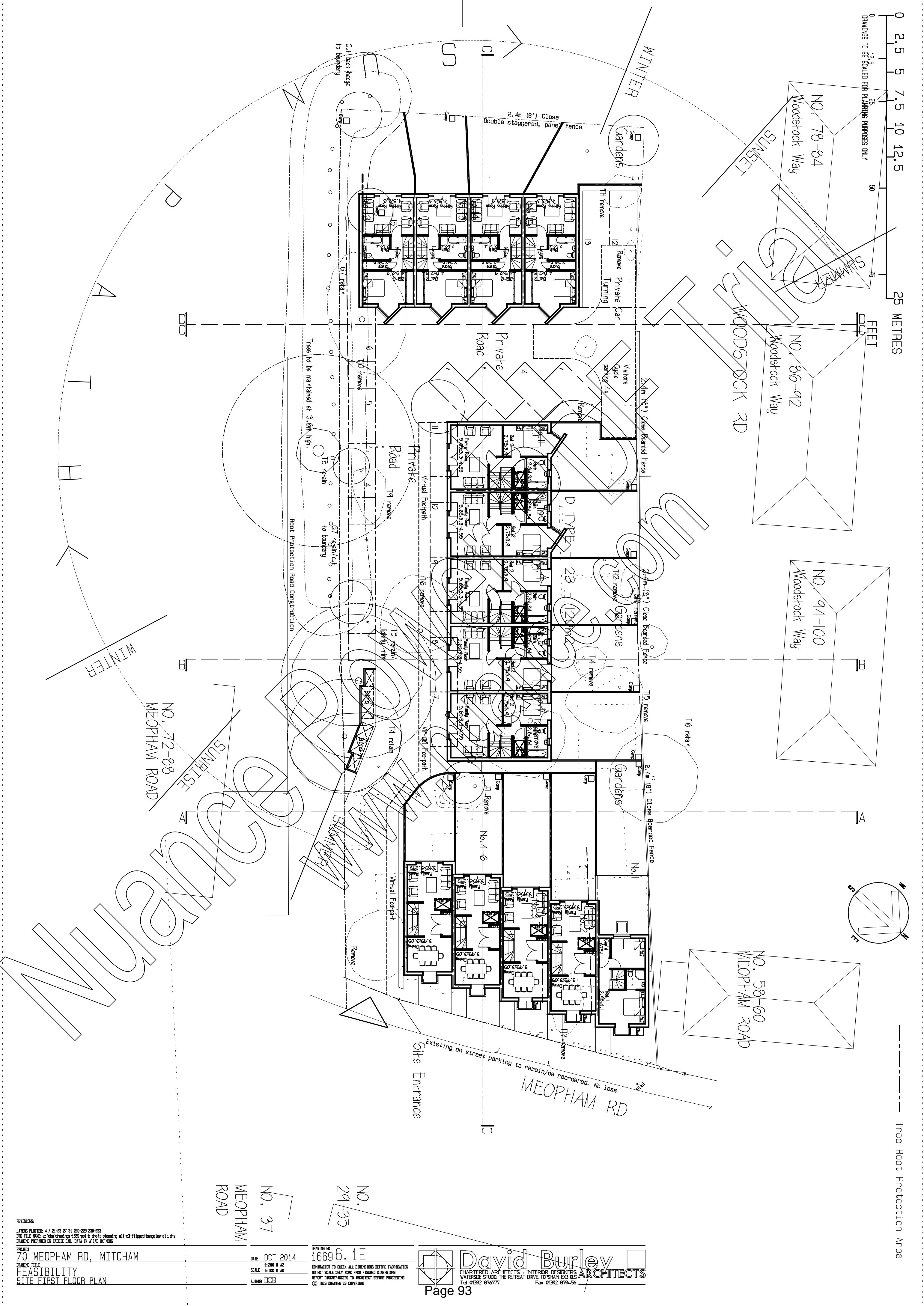


Tree Root Protection Area



NO. 37
MEOPHAM
ROAD

NO.
29-35

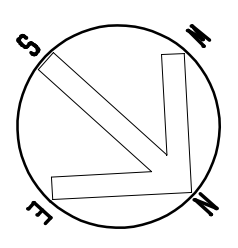
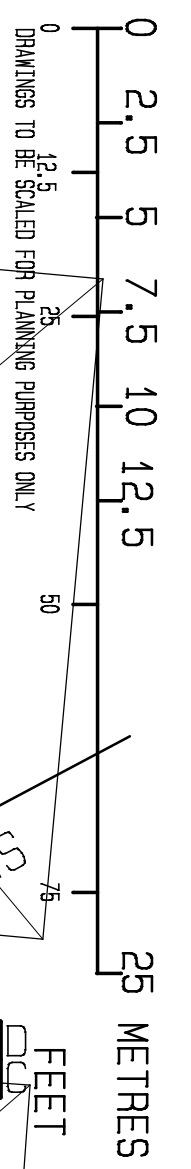
REVISIONS:
LAYERING PLOTTED: 4 7 21-23 27 31 220-223 230-233
DWG FILE NAME: z:\cda\drawings\1669\p1-0.dwg
DRAWING PREPARED ON CADDE CAD. DATA IN A CAD 2016/2016

PROJECT
70 MEOPHAM RD, MITCHAM
DRAWING TITLE
FEASIBILITY
SITE FIRST FLOOR PLAN

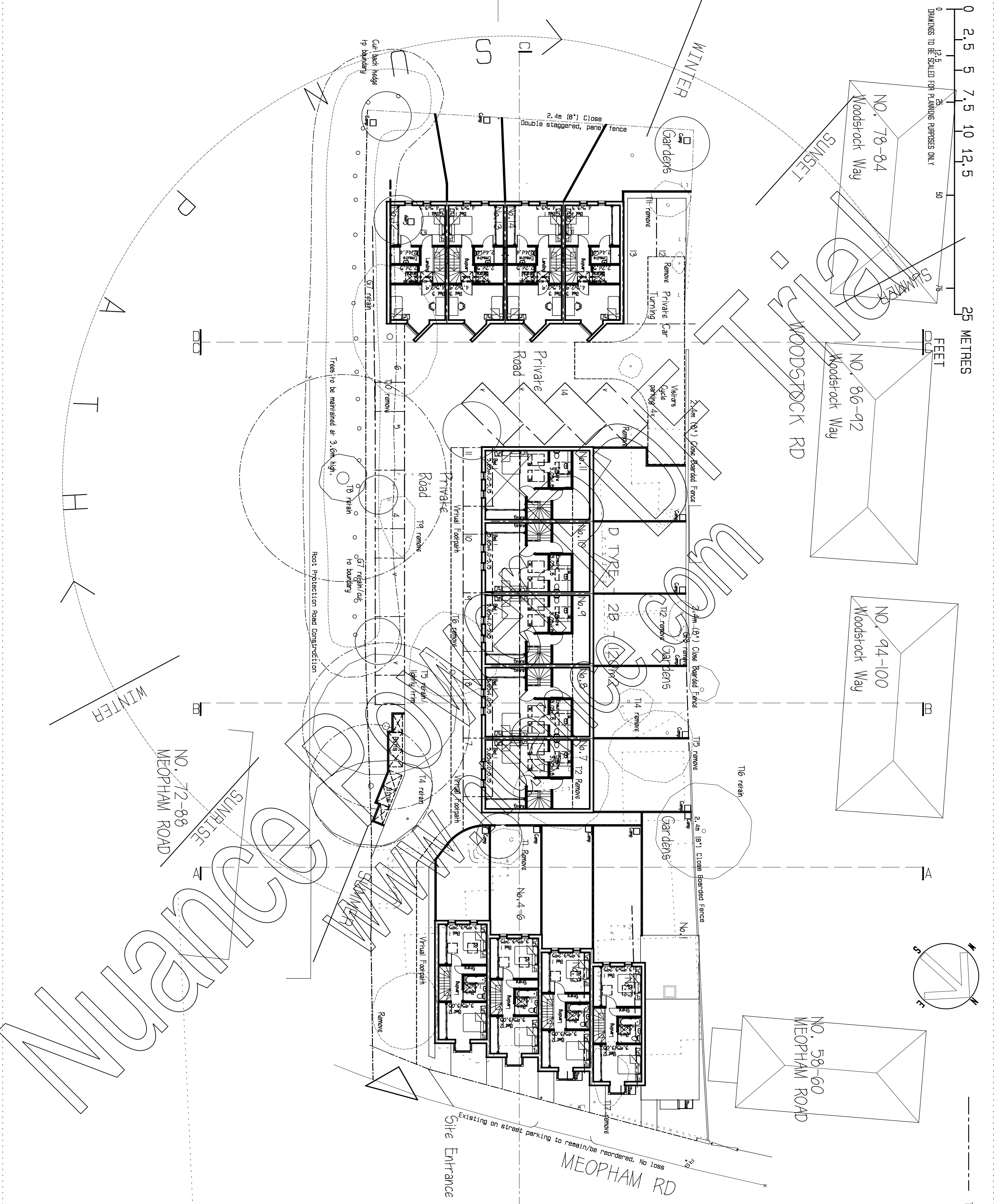
DATE OCT 2014
SCALE 1:200 # A2
1:100 # A0
AUTHOR DCB

DRAWING NO
16696.1E
CONTRACTOR TO CHECK ALL DIMENSIONS BEFORE FABRICATION
DO NOT SCALE ONLY WORK FROM FIGURED DIMENSIONS
REPORT DISCREPANCIES TO ARCHITECT BEFORE PROCEEDING
© THIS DRAWING IS COPYRIGHT

David Burley ARCHITECTS
CHARTERED ARCHITECTS + INTERIOR DESIGNERS
WATERSIDE STUDIO, THE RETREAT DRIVE, TOPSHAM, EX3 0LS
Tel: 01992 676777 Fax: 01992 679436



Tree Root Protection Area



NO. 37
MEOPHAM
ROAD

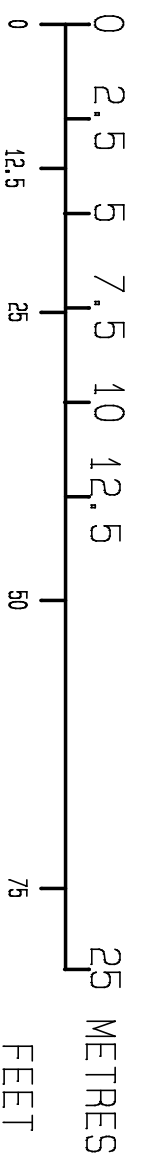
NO.
29-35

REVISIONS:
LAYERS PLOTTED: 4 7 21-23 27 31 220-223 230-233
DWG FILE NAME: z:\cda\drawings\1669\ppt-0 draft\planning\sl1-c3-11pped-burley-ar1.dwg
DRAWING PREPARED ON CADDE CAD. DATA IN A CAD DSE/DMS
PROJECT
70 MEOPHAM RD, MITCHAM
DRAWING TITLE
FEASIBILITY
SITE SECOND FLOOR PLAN

DATE OCT 2014
SCALE 1:200 # A2
1:100 # A0
AUTHOR DCB

DRAWING NO
16696.2E
CONTRACTOR TO CHECK ALL DIMENSIONS BEFORE FABRICATION
DO NOT SCALE ONLY WORK FROM FIGURED DIMENSIONS
REPORT DISCREPANCIES TO ARCHITECT BEFORE PROCEEDING
© THIS DRAWING IS COPYRIGHT

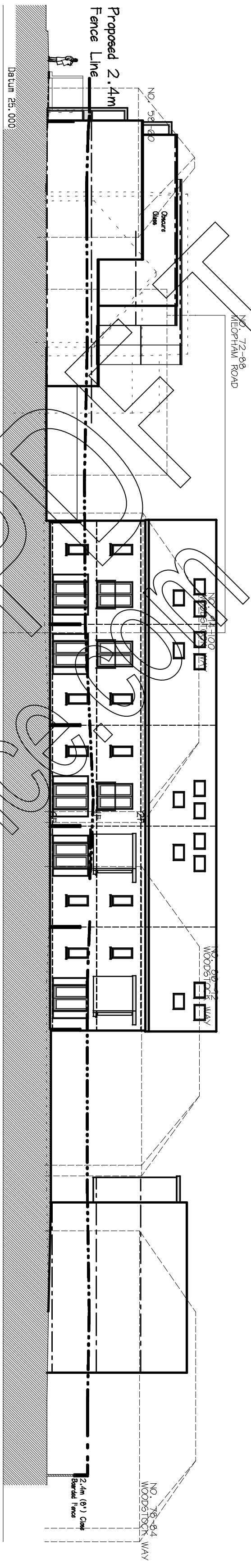
David Burley ARCHITECTS
CHARTERED ARCHITECTS • INTERIOR DESIGNERS
WATERSIDE STUDIO, THE RETREAT DRIVE, TOPSHAM EX3 0LS
Tel: 01392 876777 Fax: 01392 879456



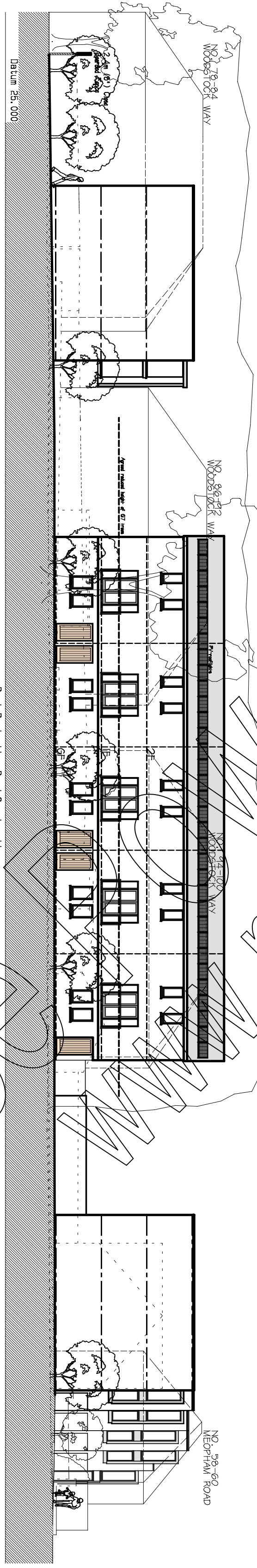
Burley

- Schedule of Materials:**
- Roof: Stranding Seam aluminium
 - Walls: Brick
 - Bays: Vertical Boarded Cedar
 - Fasciae/Barges: Zinc coated Steel
 - Windows/Doors: Vertical Oak & Grey PPC Aluminium
 - Balustrades: Mill Finished Aluminium

-----Proposed 2.4m Fence Line



North West Elevation
View from Woodstock Way



South East Elevation
View From Graveyard

REVISIONS:
LAYERS PLOTTED:
DWG FILE NAME: z:\dwg\drawings\1689\ppt-0-draft\planning\ml-c3-flipped-bungalow-ml.dwg
DRAWING PREPARED ON CADDTIE CAD. DATA IN A CAD DIF/DWG

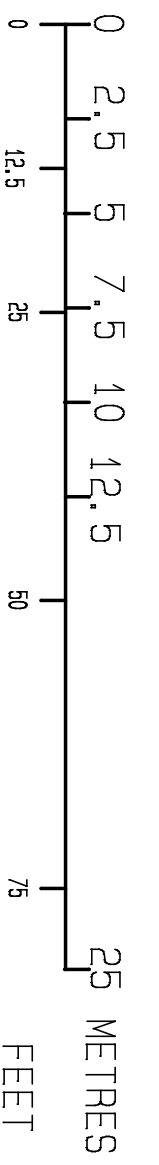
PROJECT
70 MEOPHAM RD, MITCHAM
DRAWING TITLE
PROPOSALS
ELEVATIONS

DATE AUG 2014
SCALE 1:200 # A2
1:100 # A0
AUTHOR DCB

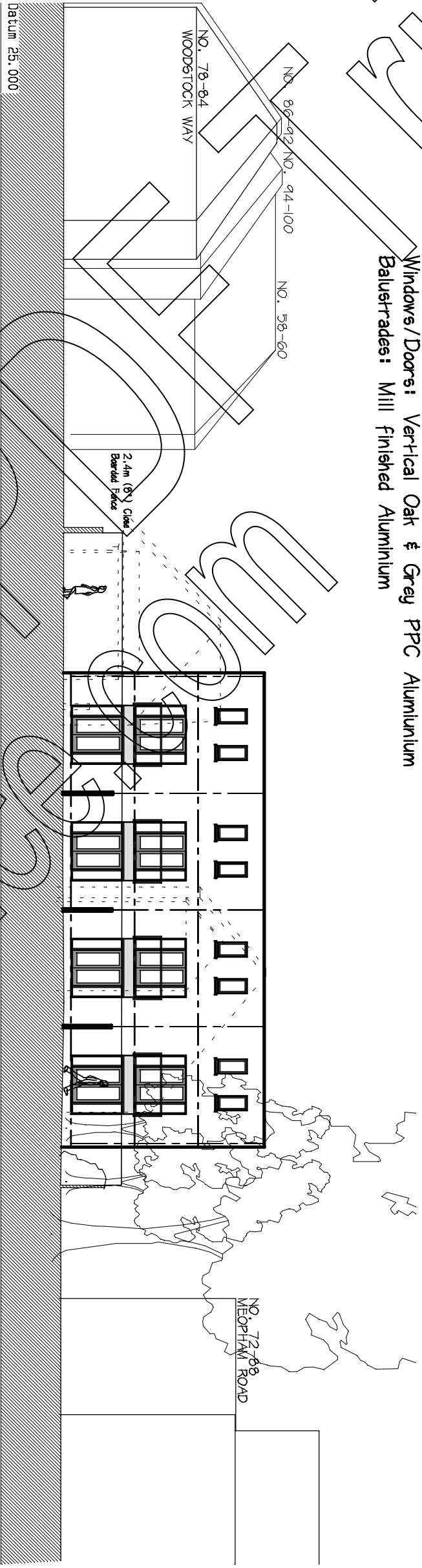
DRAWING NO
16696.9.1D
CONTRACTOR TO CHECK ALL DIMENSIONS BEFORE FABRICATION
DO NOT SCALE ONLY WORK FROM FIGURED DIMENSIONS
REPORT DISCREPANCIES TO ARCHITECT BEFORE PROCEEDING
© THIS DRAWING IS COPYRIGHT



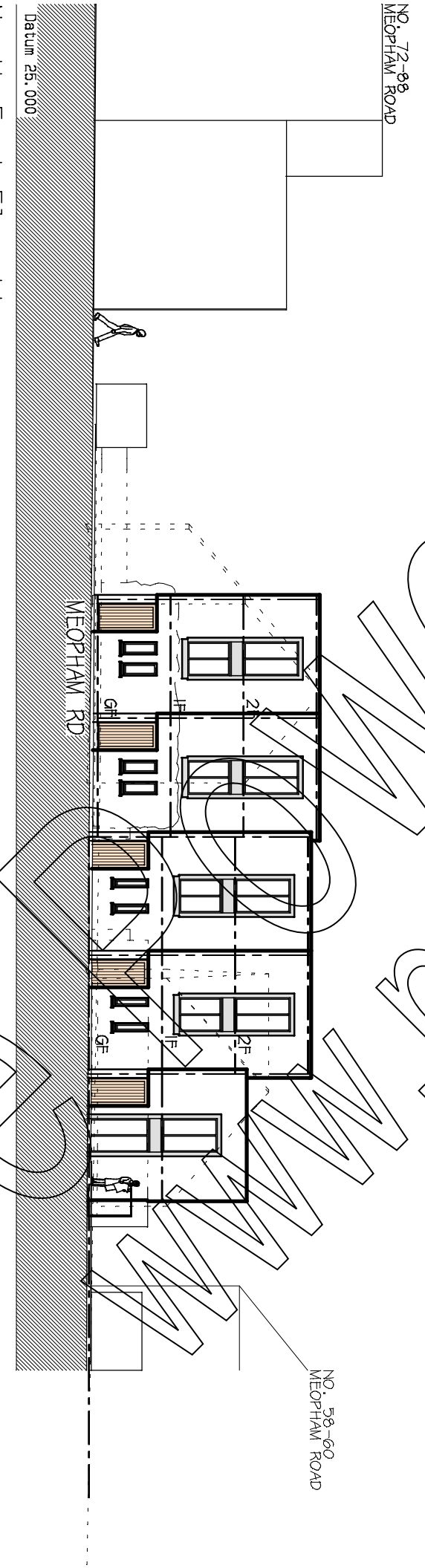
David Burley ARCHITECTS
CHARTERED ARCHITECTS & INTERIOR DESIGNERS
WATERSIDE STUDIO, THE RETREAT DRIVE, TOPSHAM, EX3 0LS
Tel: 01392 876777 Fax: 01392 879456



- Schedule of Materials:**
- Roof: Standing Seam aluminium
 - Walls: Brick
 - Bays: Vertical Boarded Cedar
 - Fascias/Barges: Zinc coated Steel
 - Windows/Doors: Vertical Oak & Grey PPC Aluminium
 - Balustrades: Mill finished Aluminium



South West Elevation
View from Graveyard



North East Elevation
View from Meopham Road

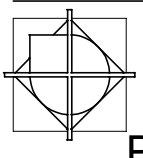
www.advancearchitects.com

REVISIONS:
LAYERS PLOTTED: 0
DWG FILE NAME: z:\04a drawings\1669\ppt-0 draft planning ml1-c3-flipped-bungalow-ml1.dwg
DRAWING PREPARED ON CADTIE CAD. DATA IN A CAD DIF/DWG

PROJECT: 70 MEOPHAM RD, MITCHAM
DRAWING TITLE: PROPOSALS ELEVATIONS
AUTHOR: DCB

DATE: AUG 2014
SCALE: 1:200 # A2
1:100 # A0
CONTRACTOR TO CHECK ALL DIMENSIONS BEFORE FABRICATION
DO NOT SCALE ONLY WORK FROM FIGURED DIMENSIONS
REPORT DISCREPANCIES TO ARCHITECT BEFORE PROCEEDING
© THIS DRAWING IS COPYRIGHT

DRAWING NO: 16696.9.2D



David Burley ARCHITECTS
CHARTERED ARCHITECTS & INTERIOR DESIGNERS
WATERSIDE STUDIO, THE RETREAT DRIVE, TOPSHAM, EX3 0LS
Tel: 01392 876777 Fax: 01392 879456