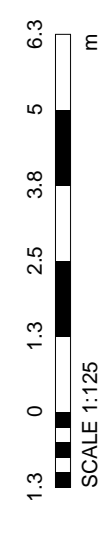
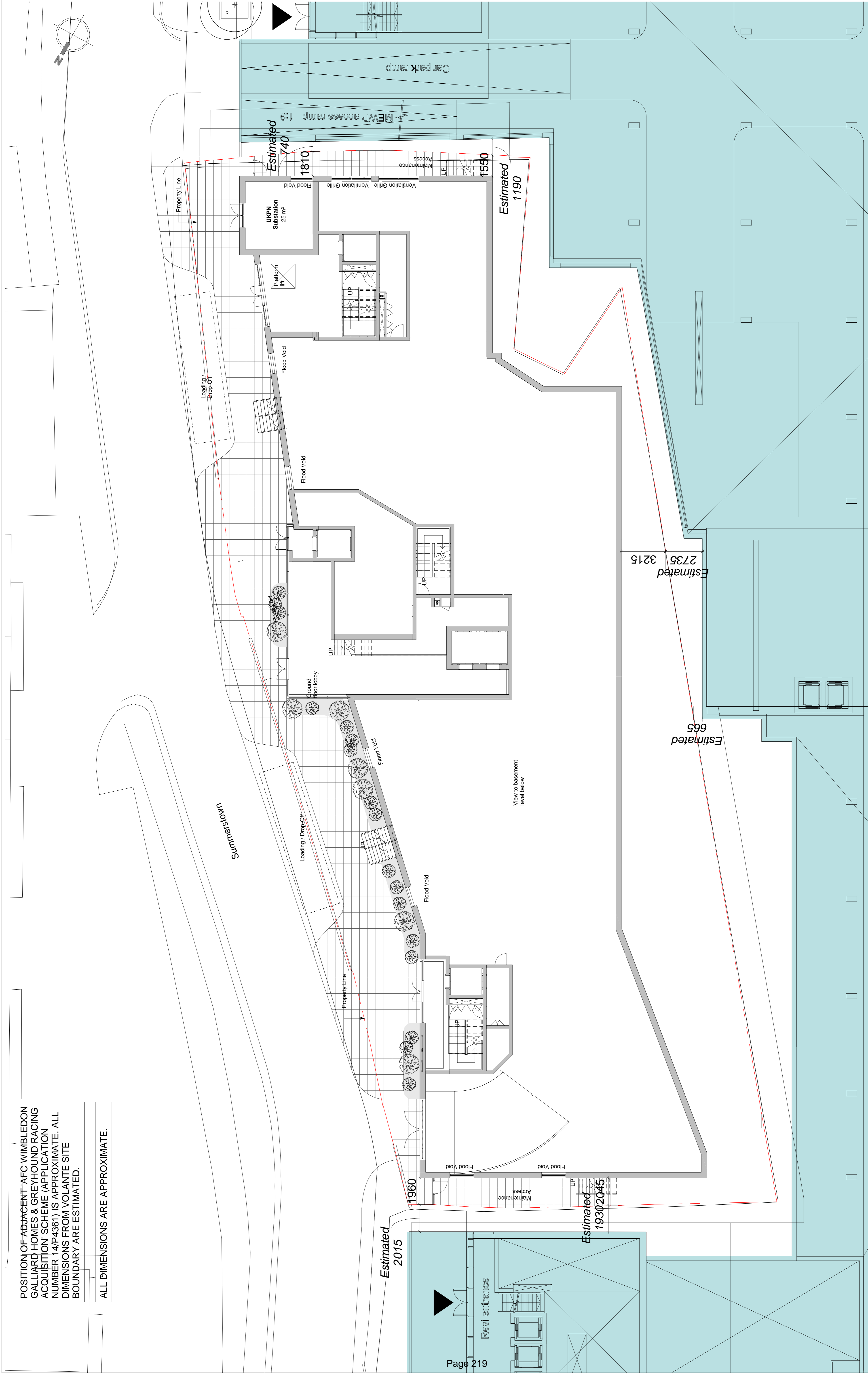


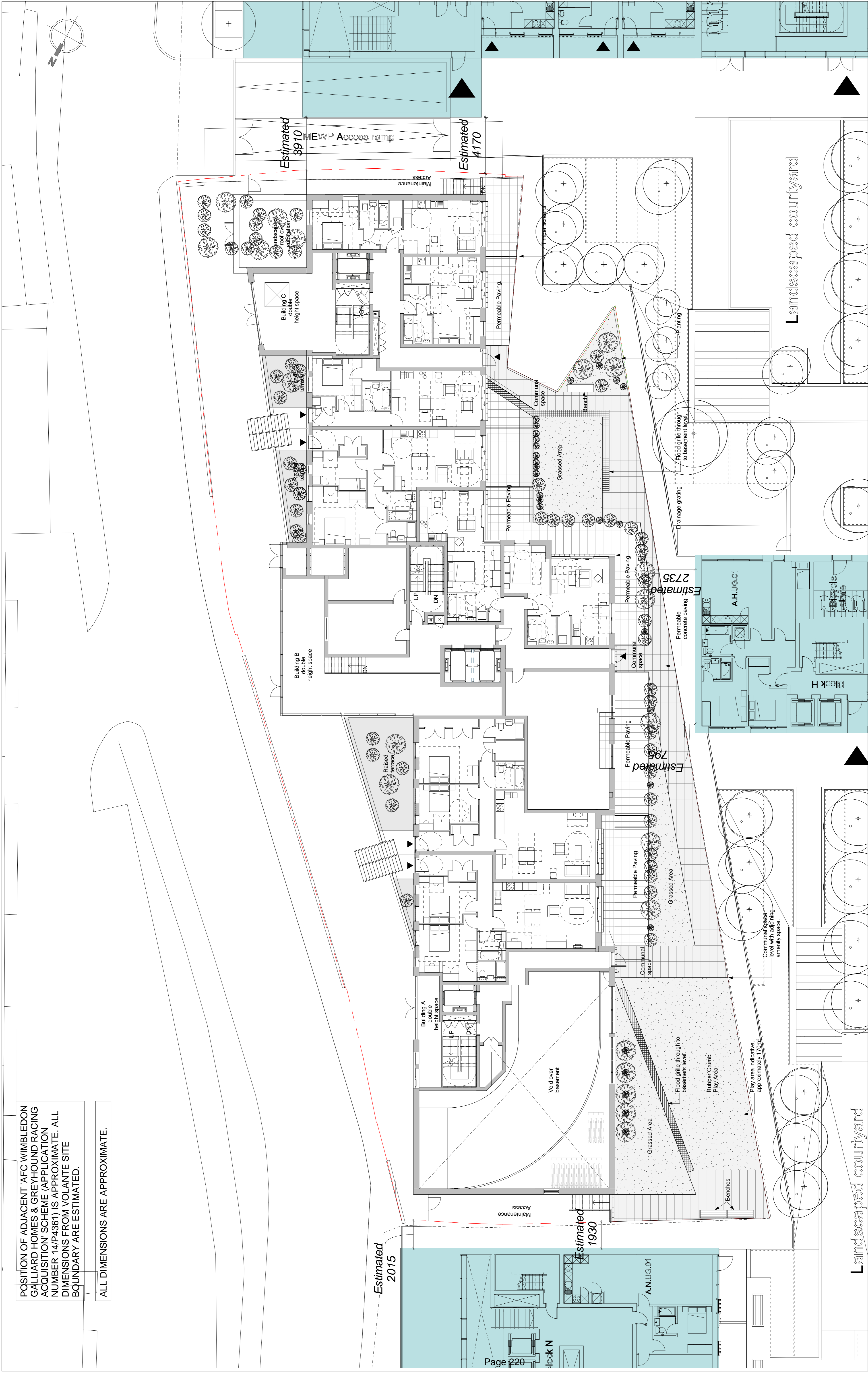
POSITION OF ADJACENT AFC WIMBLEDON GALLIARD HOMES & GREYHOUND RACING ACQUISITION SCHEME (APPLICATION NUMBER 14/P4361) IS APPROXIMATE. ALL DIMENSIONS FROM VOLANTE SITE BOUNDARY ARE ESTIMATED.

ALL DIMENSIONS ARE APPROXIMATE.



POSITION OF ADJACENT AFC WIMBLEDON GALLIARD HOMES & GREYHOUND RACING ACQUISITION' SCHEME (APPLICATION NUMBER 14/P4361) IS APPROXIMATE. ALL DIMENSIONS FROM VOLANTE SITE BOUNDARY ARE ESTIMATED.

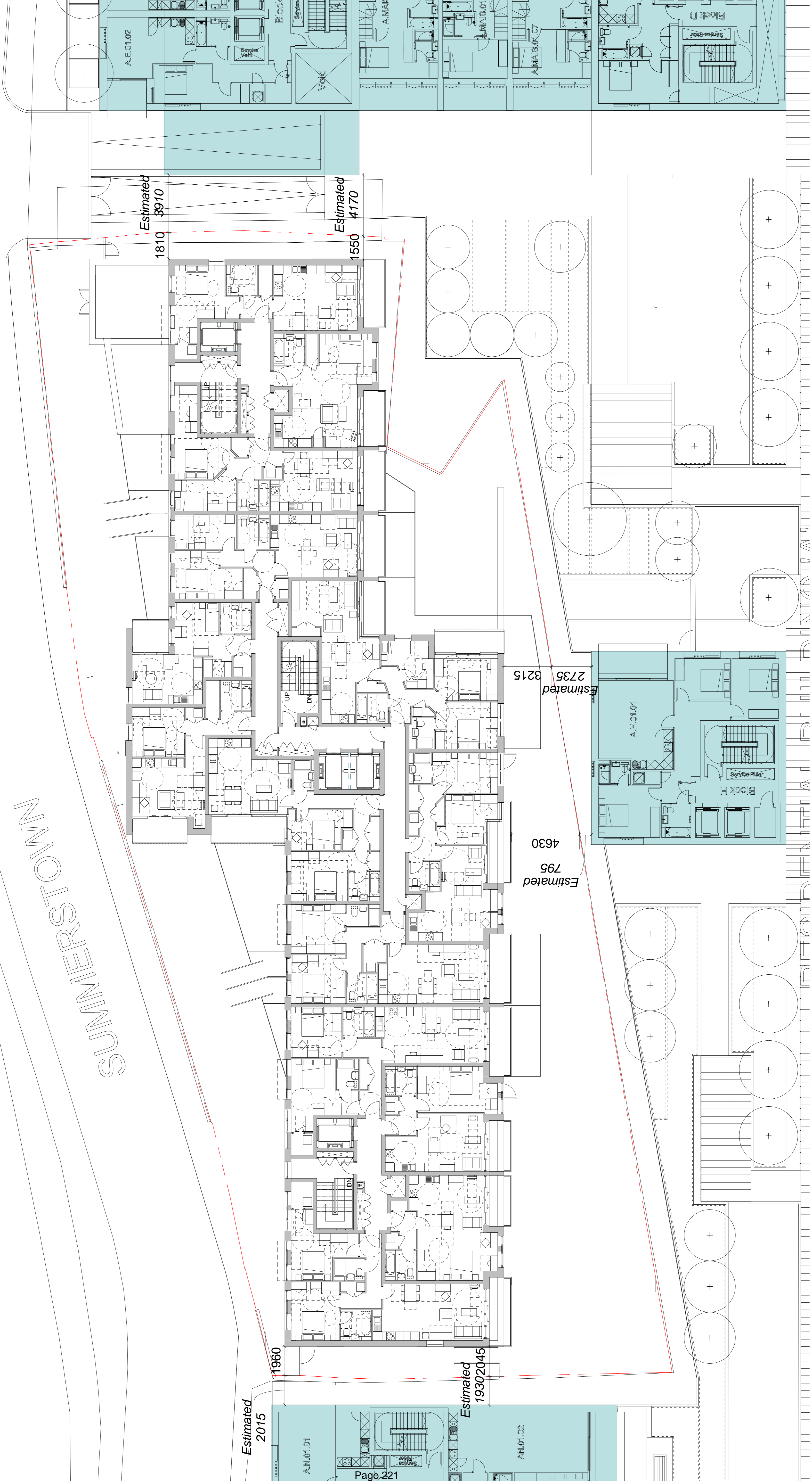
ALL DIMENSIONS ARE APPROXIMATE.



POSITION OF ADJACENT AFC WIMBLEDON GALLIARD HOMES & GREYHOUND RACING ACQUISITION' SCHEME (APPLICATION NUMBER 14/P4361) IS APPROXIMATE. ALL DIMENSIONS FROM VOLANTE SITE BOUNDARY ARE ESTIMATED.

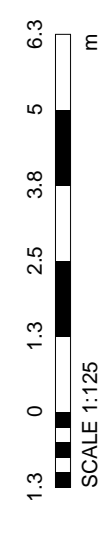
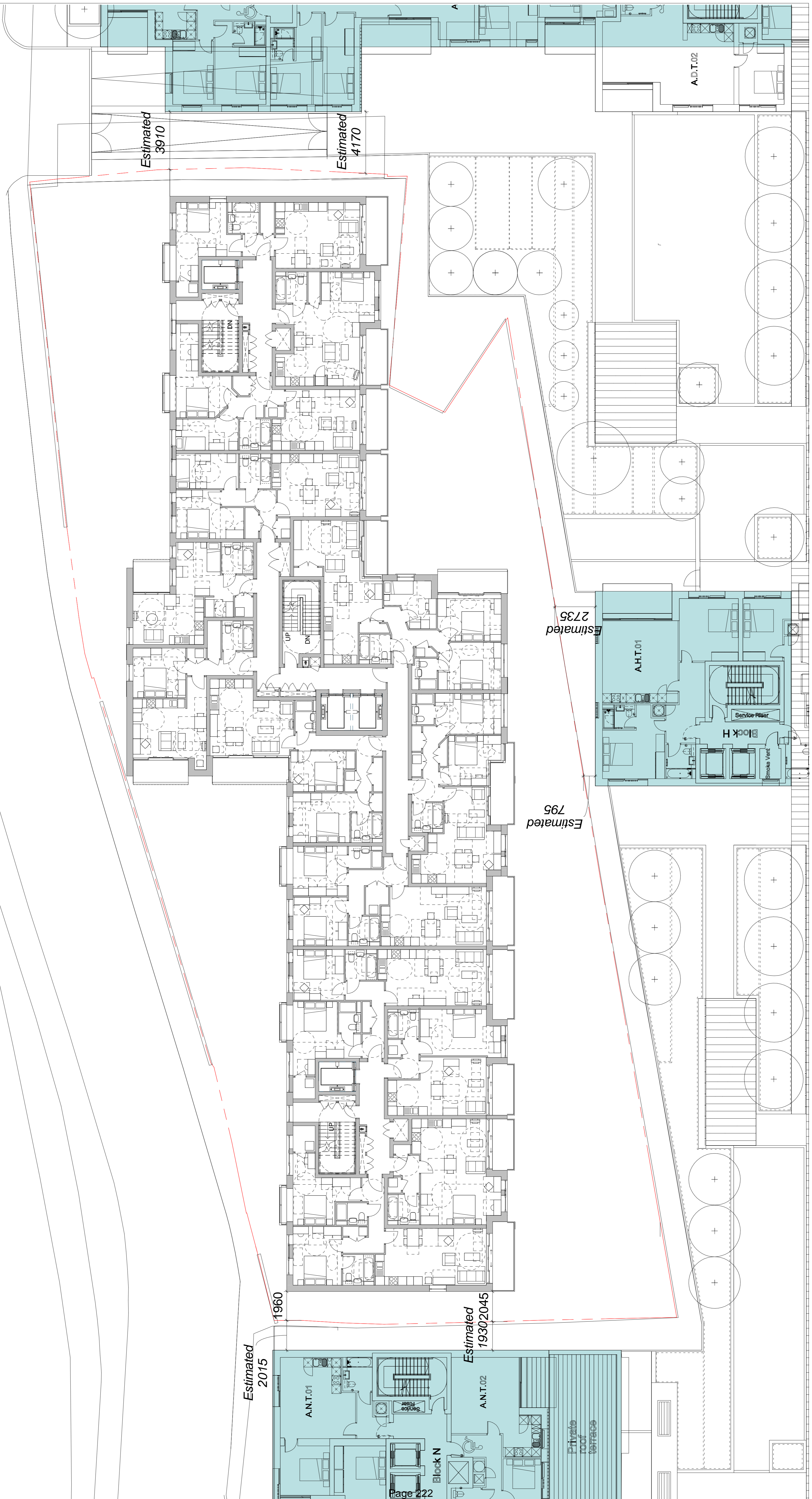
ALL DIMENSIONS ARE APPROXIMATE.

SUMMERSTOWN



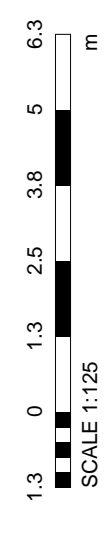
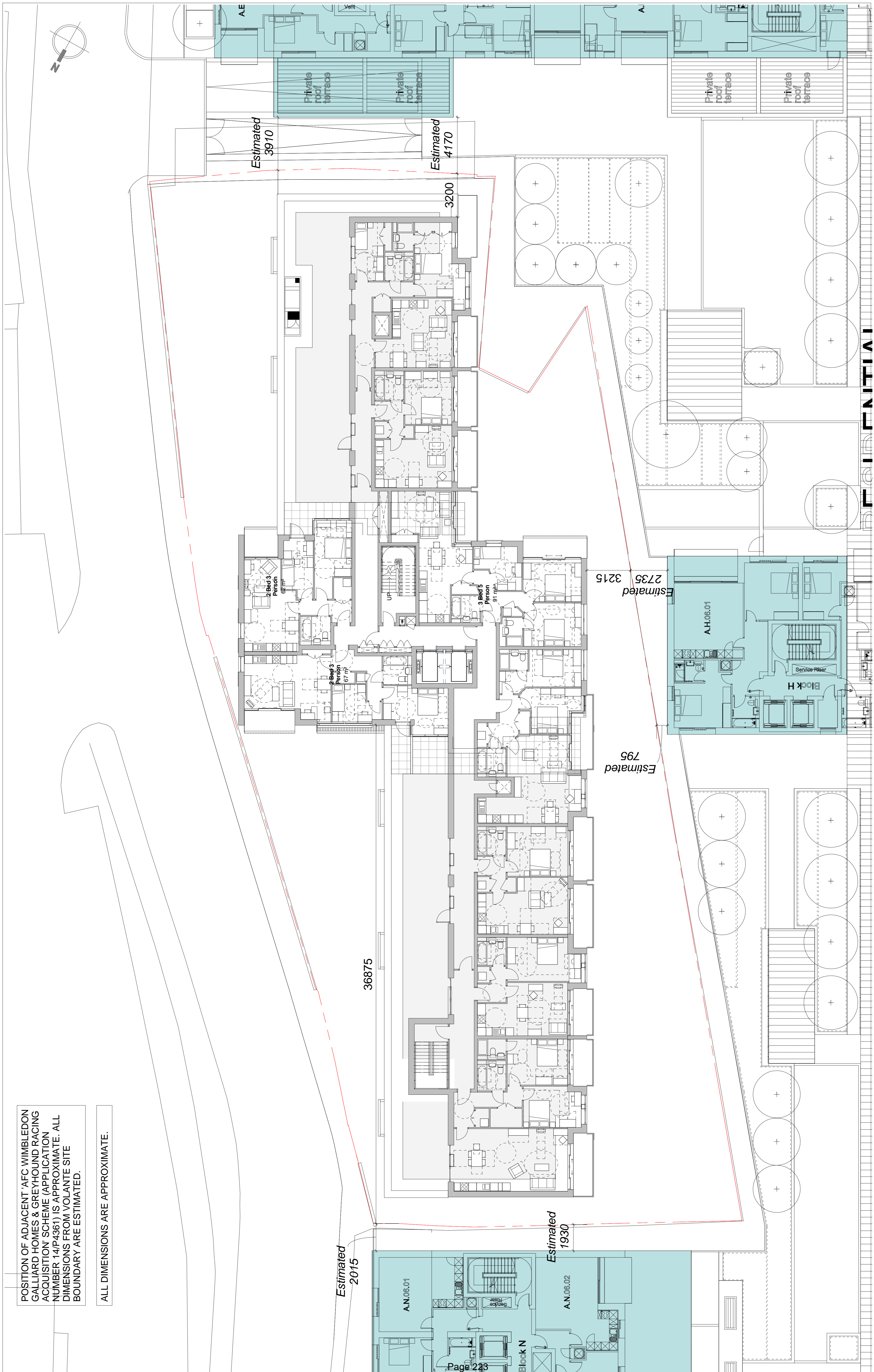
POSITION OF ADJACENT AFC WIMBLEDON GALLIARD HOMES & GREYHOUND RACING ACQUISITION SCHEME (APPLICATION NUMBER 14/P4361) IS APPROXIMATE. ALL DIMENSIONS FROM VOLANTE SITE BOUNDARY ARE ESTIMATED.

ALL DIMENSIONS ARE APPROXIMATE.



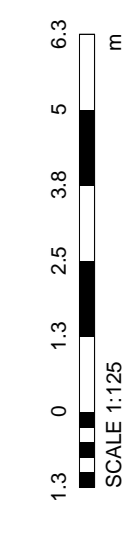
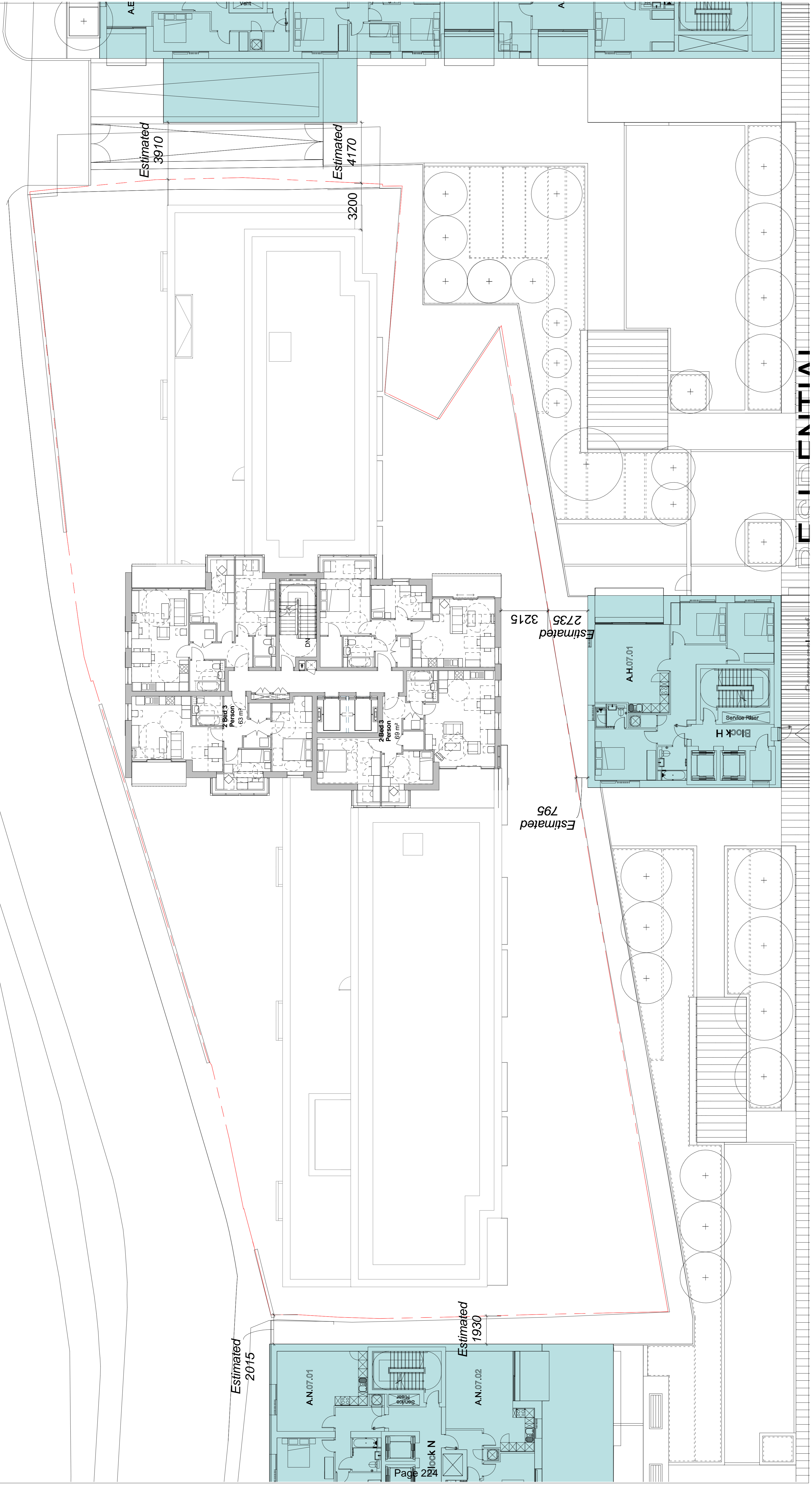
POSITION OF ADJACENT AFC WIMBLEDON GALLIARD HOMES & GREYHOUND RACING ACQUISITION' SCHEME (APPLICATION NUMBER 14/P/4361) IS APPROXIMATE. ALL DIMENSIONS FROM VOLANTE SITE BOUNDARY ARE ESTIMATED.

ALL DIMENSIONS ARE APPROXIMATE.



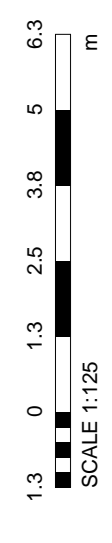
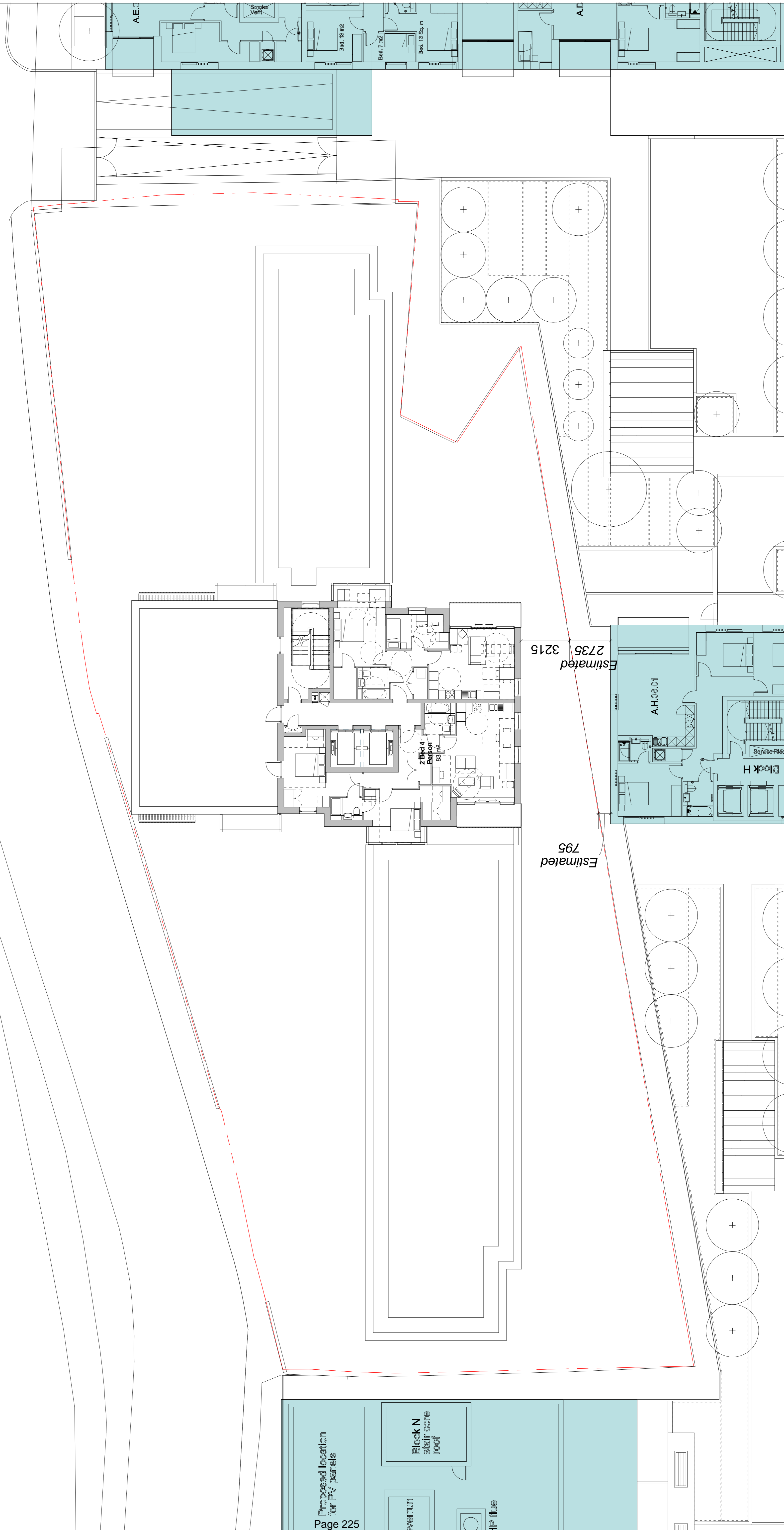
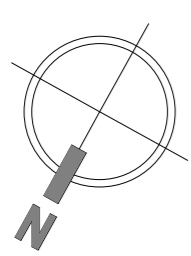
POSITION OF ADJACENT AFC WIMBLEDON GALLIARD HOMES & GREYHOUND RACING ACQUISITION' SCHEME (APPLICATION NUMBER 14/P4361) IS APPROXIMATE. ALL DIMENSIONS FROM VOLANTE SITE BOUNDARY ARE ESTIMATED.

ALL DIMENSIONS ARE APPROXIMATE.



POSITION OF ADJACENT AFC WIMBLEDON
GALLIARD HOMES & GREYHOUND RACING
ACQUISITION' SCHEME (APPLICATION
NUMBER 14/P4361) IS APPROXIMATE. ALL
DIMENSIONS FROM VOLANTE SITE
BOUNDARY ARE ESTIMATED.

ALL DIMENSIONS ARE APPROXIMATE.



This page is intentionally left blank