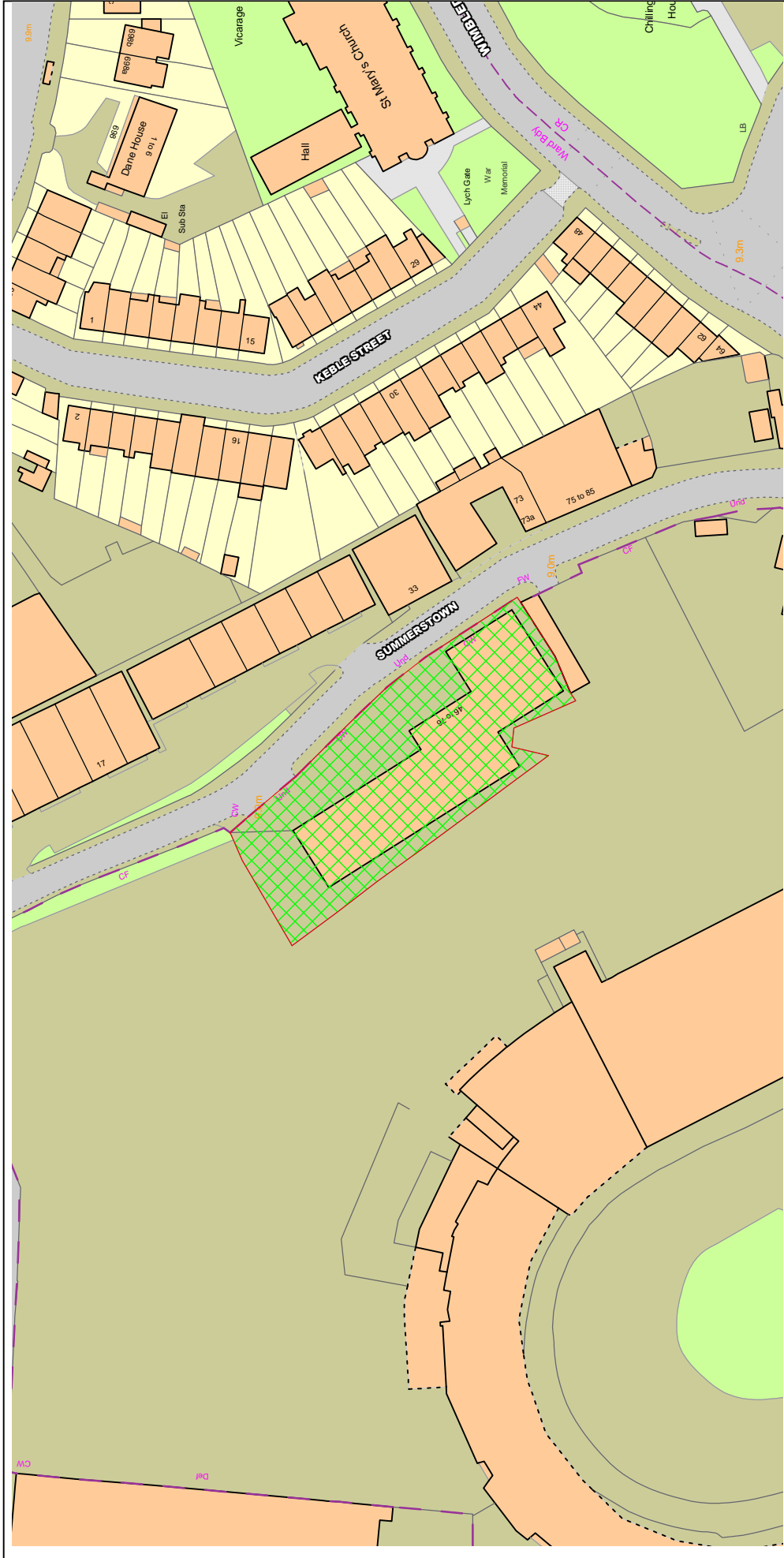
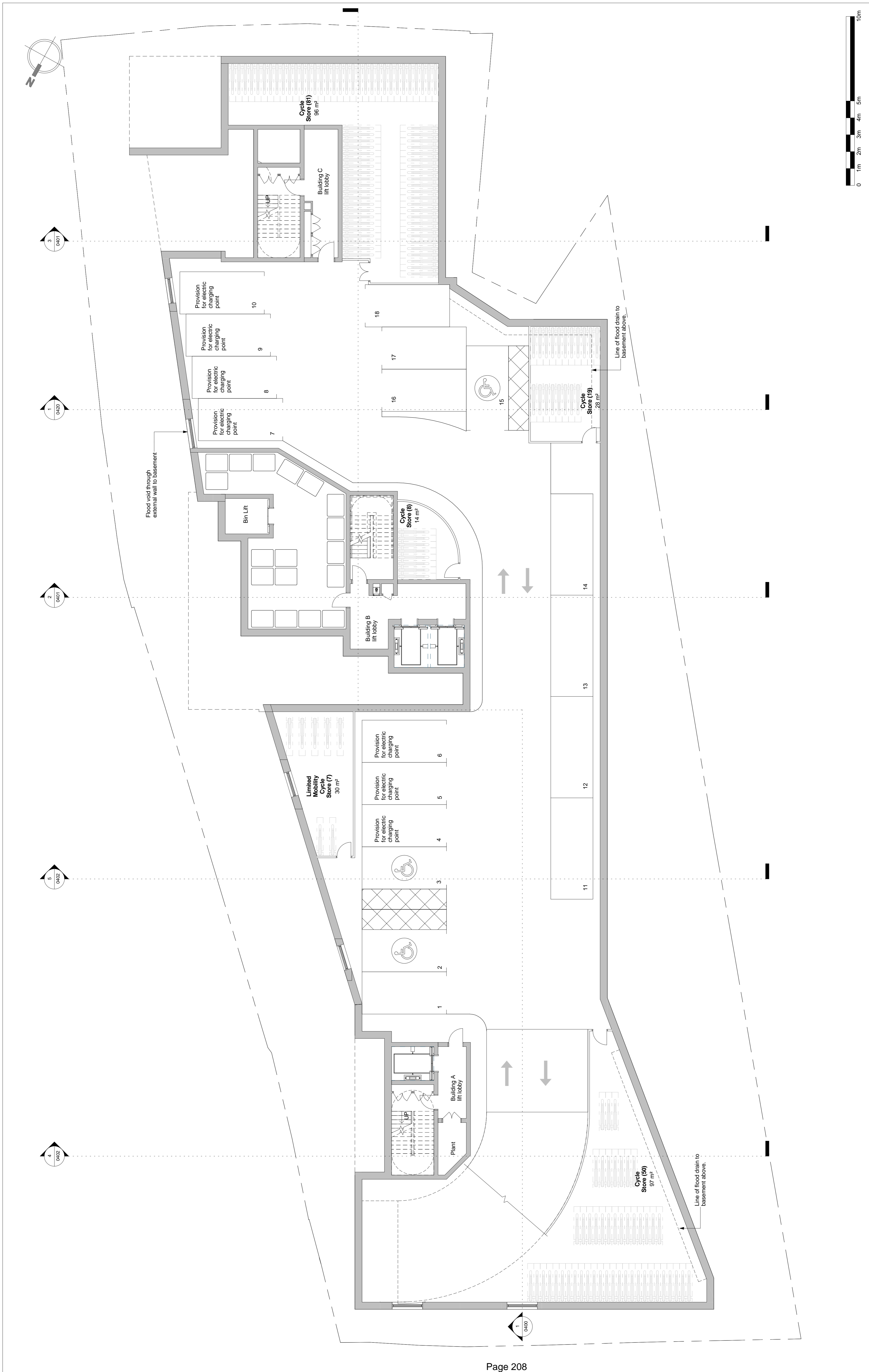


# NORTHGATE SE GIS Print Template



Text Details **Volante Site, 46-76 Summerstown**

This material has been reproduced from Ordnance Survey digital map data with the permission of the controller of Her Majesty's Stationery Office, © Crown Copyright.

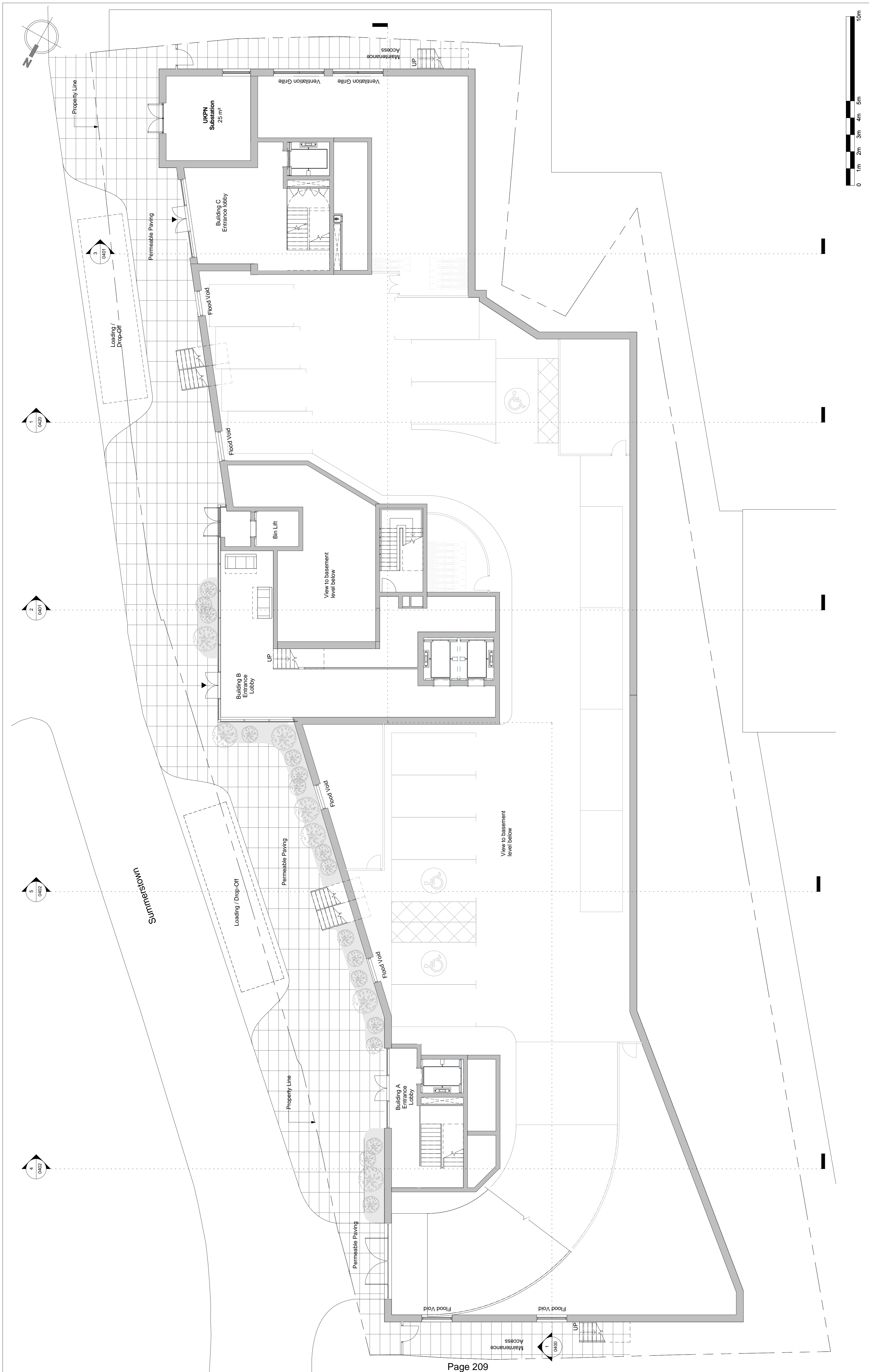


Rev: P01	Date: 29.04.2016	Drw: LC	Chk: SR
Issued for Planning			
Rev: P02	Date: 29.04.2016	Drw: LC	Chk: SR
Substation Amended and Bikes Stands Relocated			
Rev: P03	Date: 10.05.16	Drw: PA	Chk: SR
Issued for Planning			

Client: Volante Limited  
Project: 46-76 Summerstown, SW17

Title: Basement Plan  
Drawing status: Planning



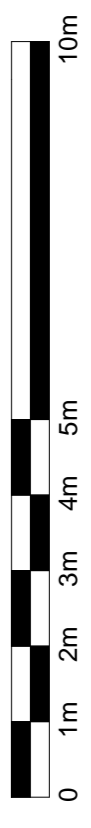
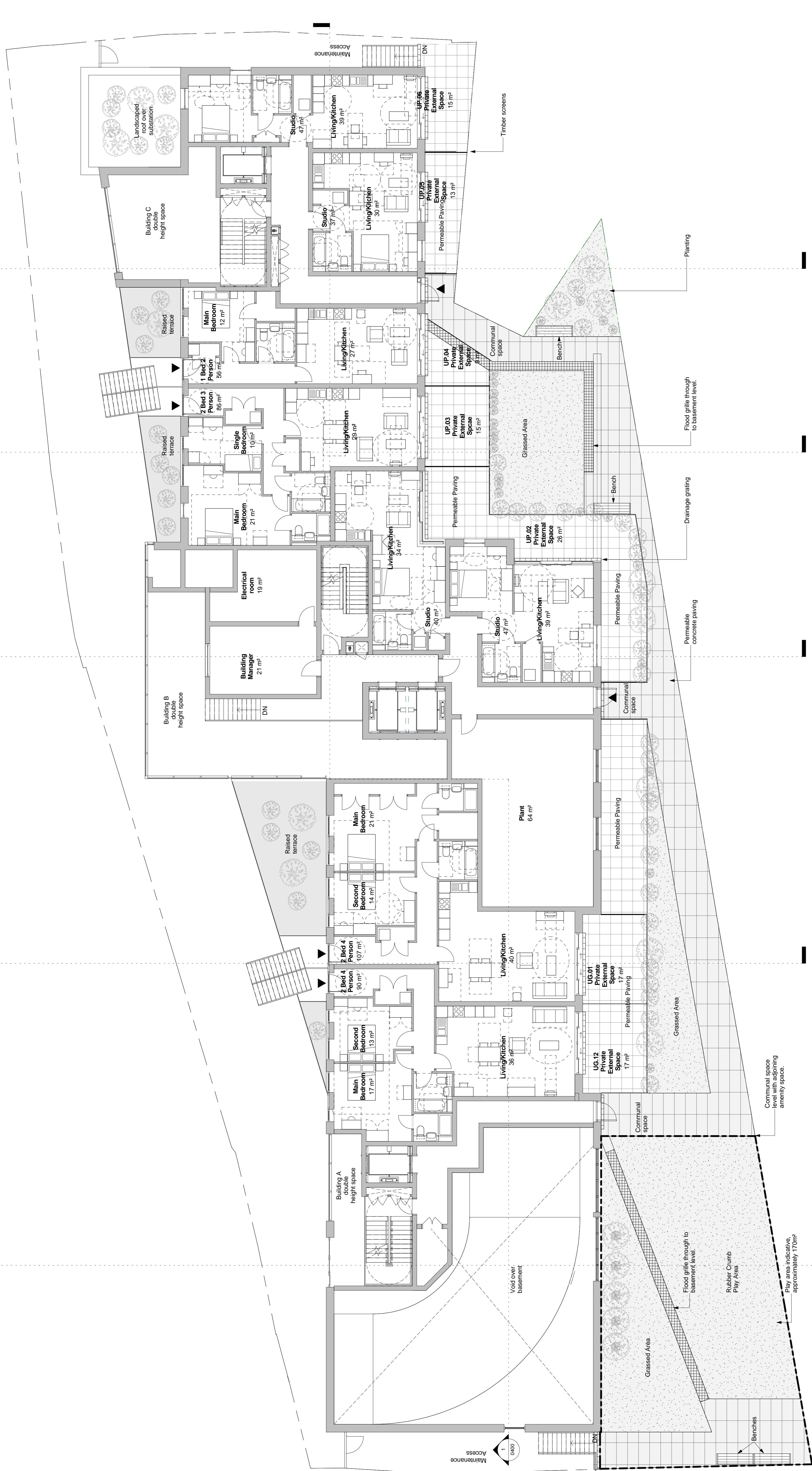
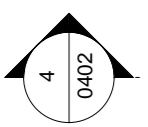
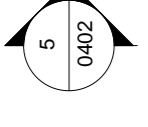
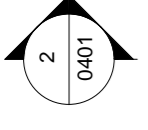
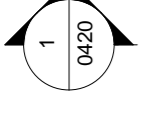
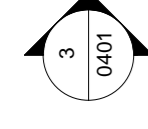
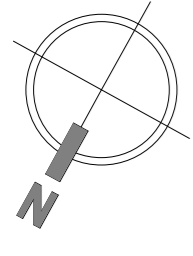


Rev: P01	Date: 29.04.2016	Dw: LC	Chk: SR
Issued for Planning			
Rev: P02	Date: 29.04.2016	Dw: LC	Chk: SR
Substation Amended			
Rev: P03	Date: 10.05.16	Dw: PA	Chk: SR
Issued for Planning			

Client: Volante Limited  
Project: 46-76 Summerstown, SW17

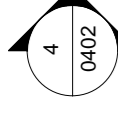
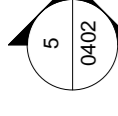
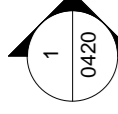
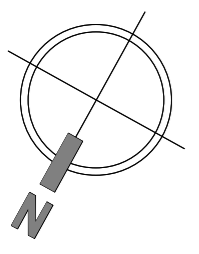
Title: Ground Floor Plan  
Drawing status: Planning

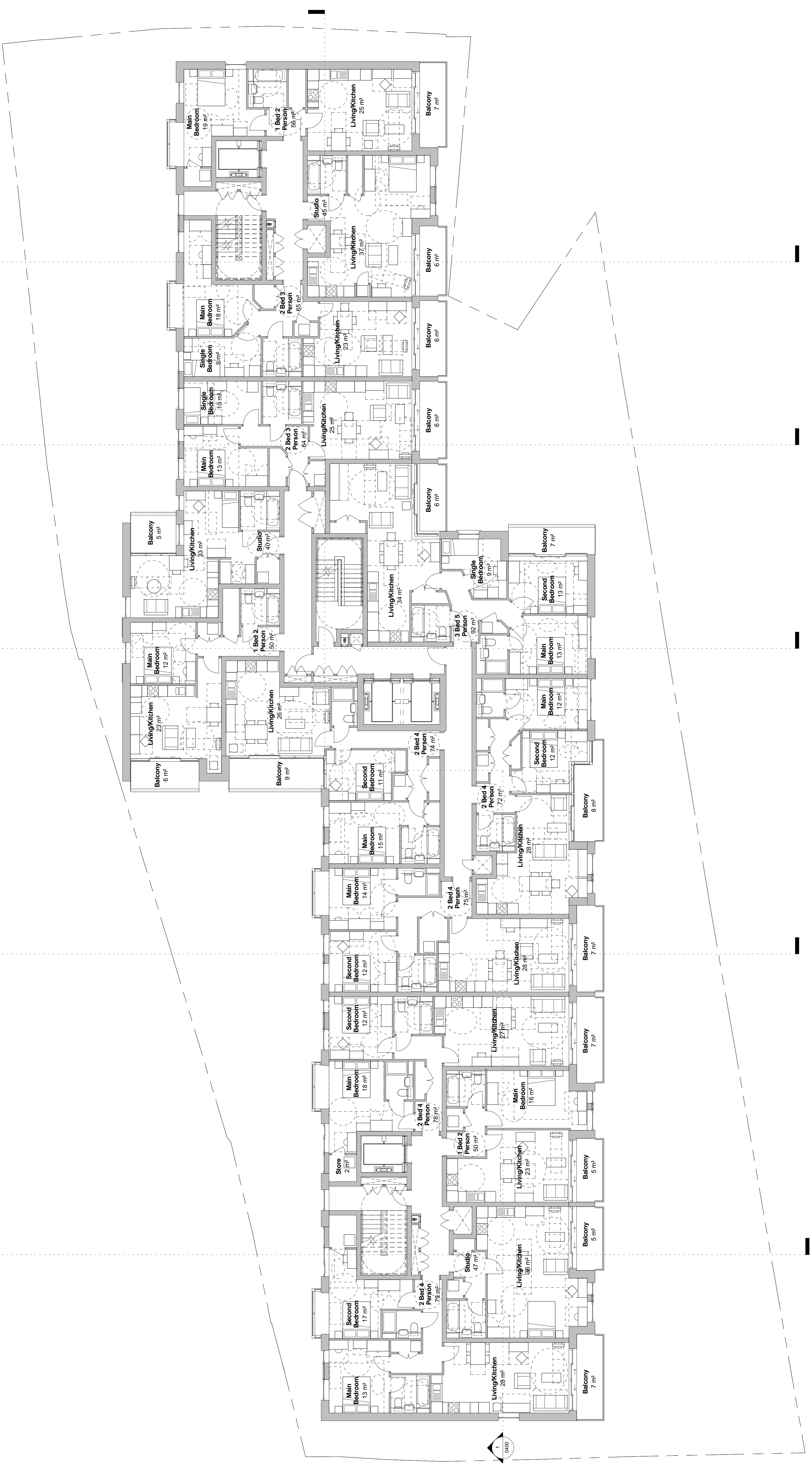
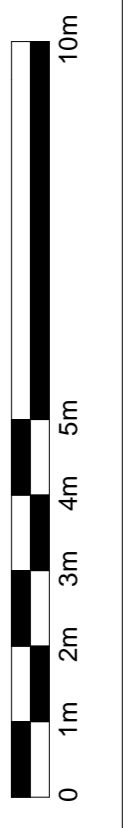
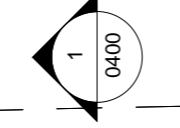
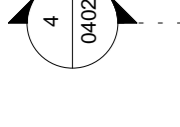
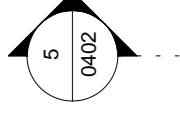
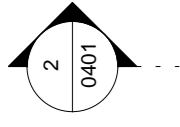
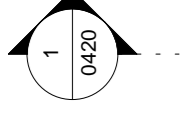
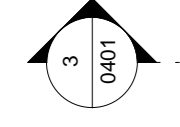
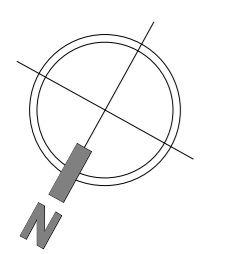


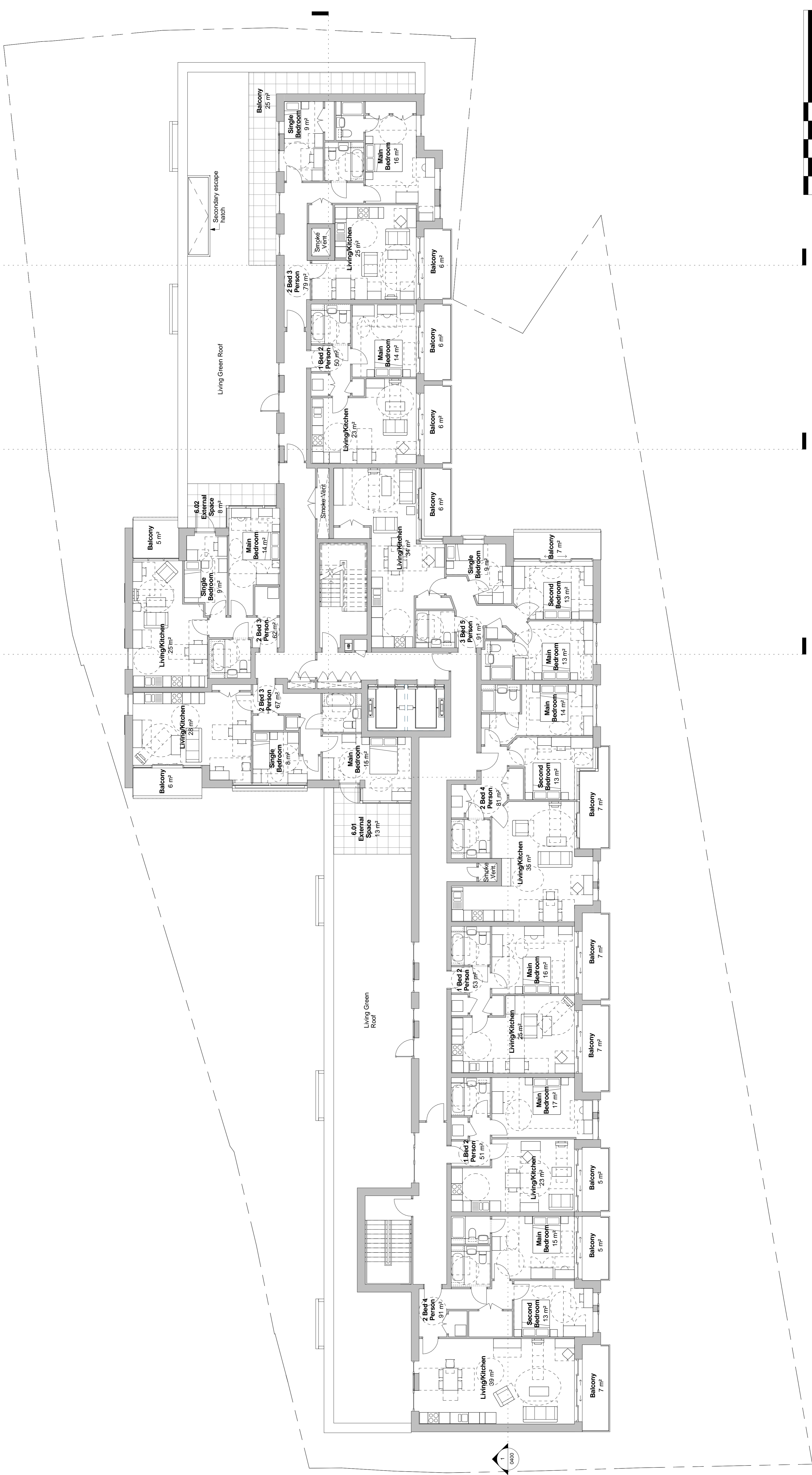
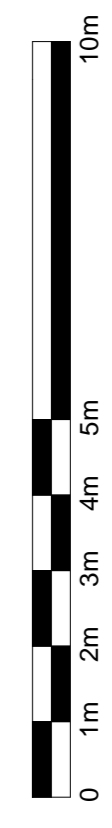
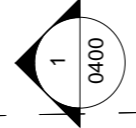
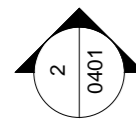
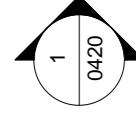
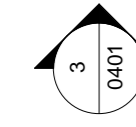
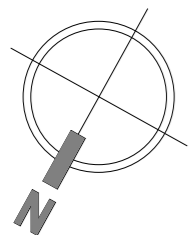


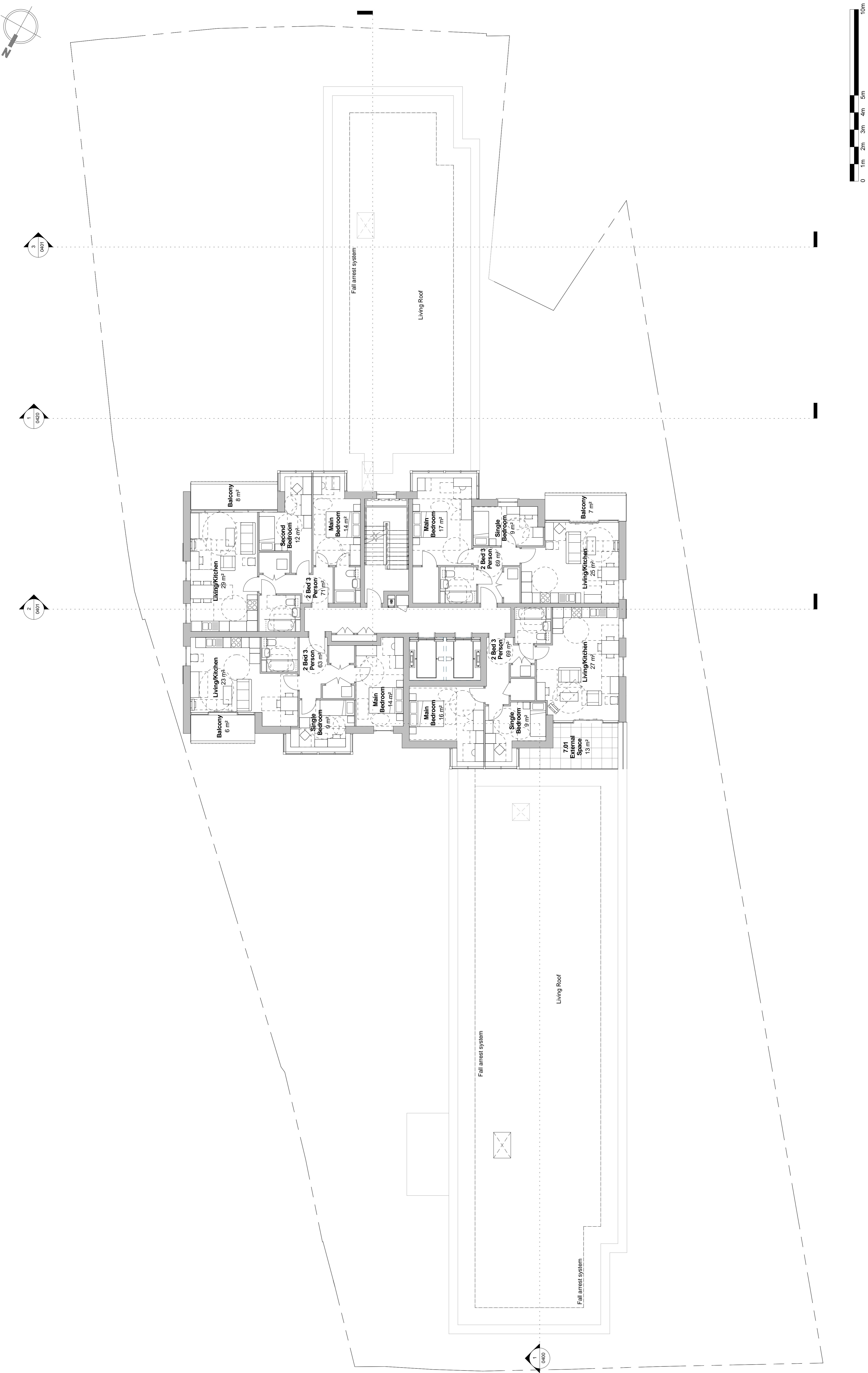
Rev: P01	Date: 29.04.2016	Drw: LC	Chk: SR
Issued for Planning			
Rev: P02	Date: 29.04.2016	Drw: LC	Chk: SR
Substation Amended			
Rev: P03	Date: 10.05.16	Drw: PA	Chk: SR
Issued for Planning			

Do not scale off this drawing  
 Dimensions to be checked on site  
 File date: 10/05/2016 16:07:20

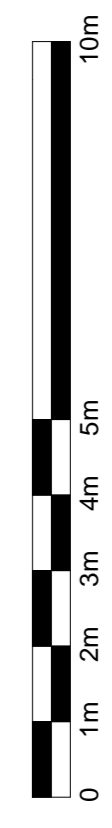
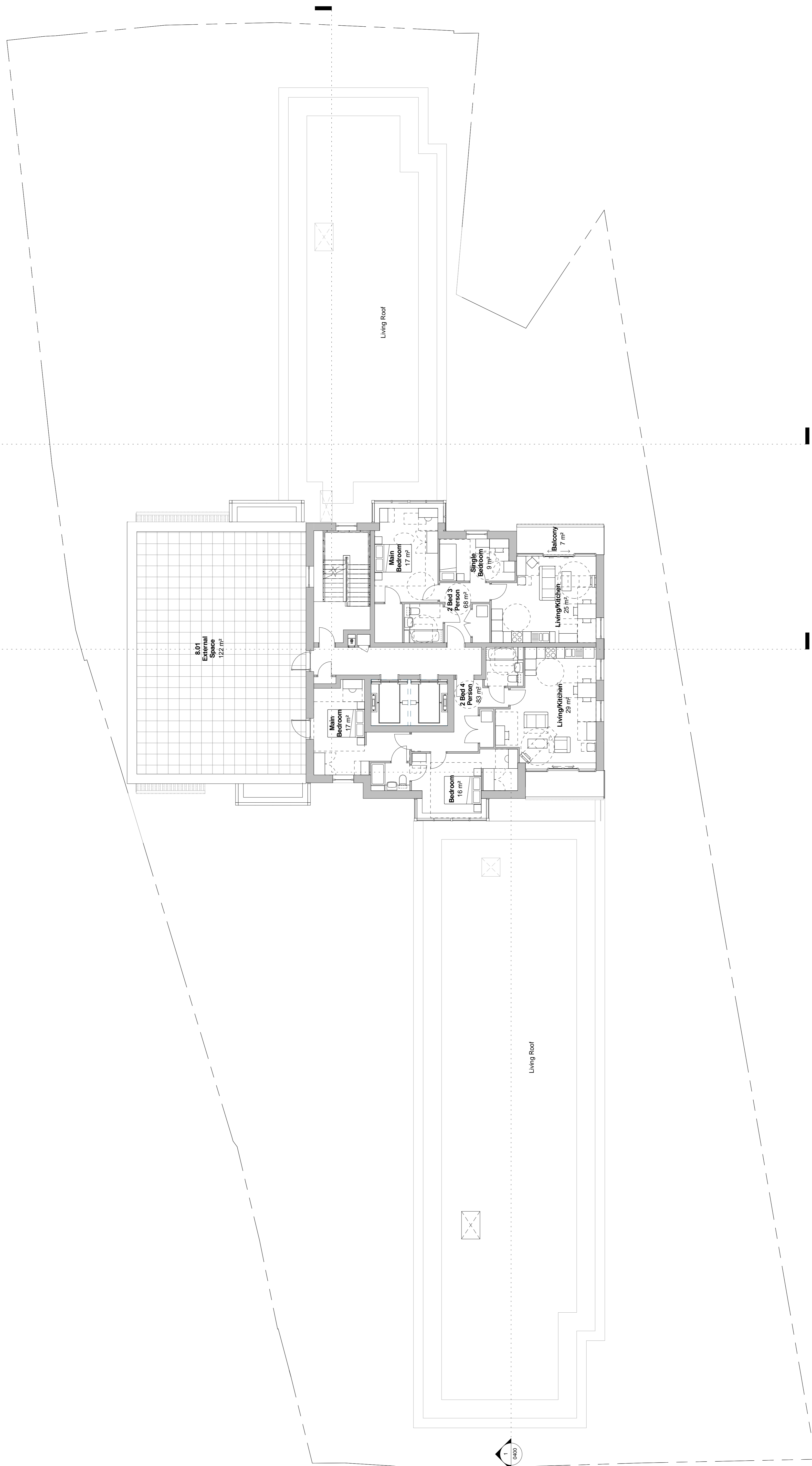
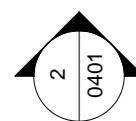
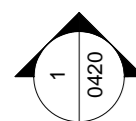
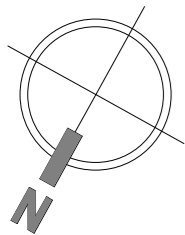


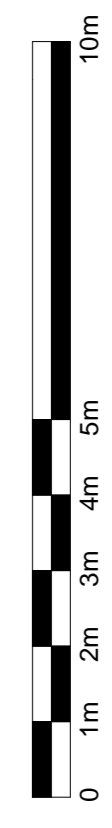
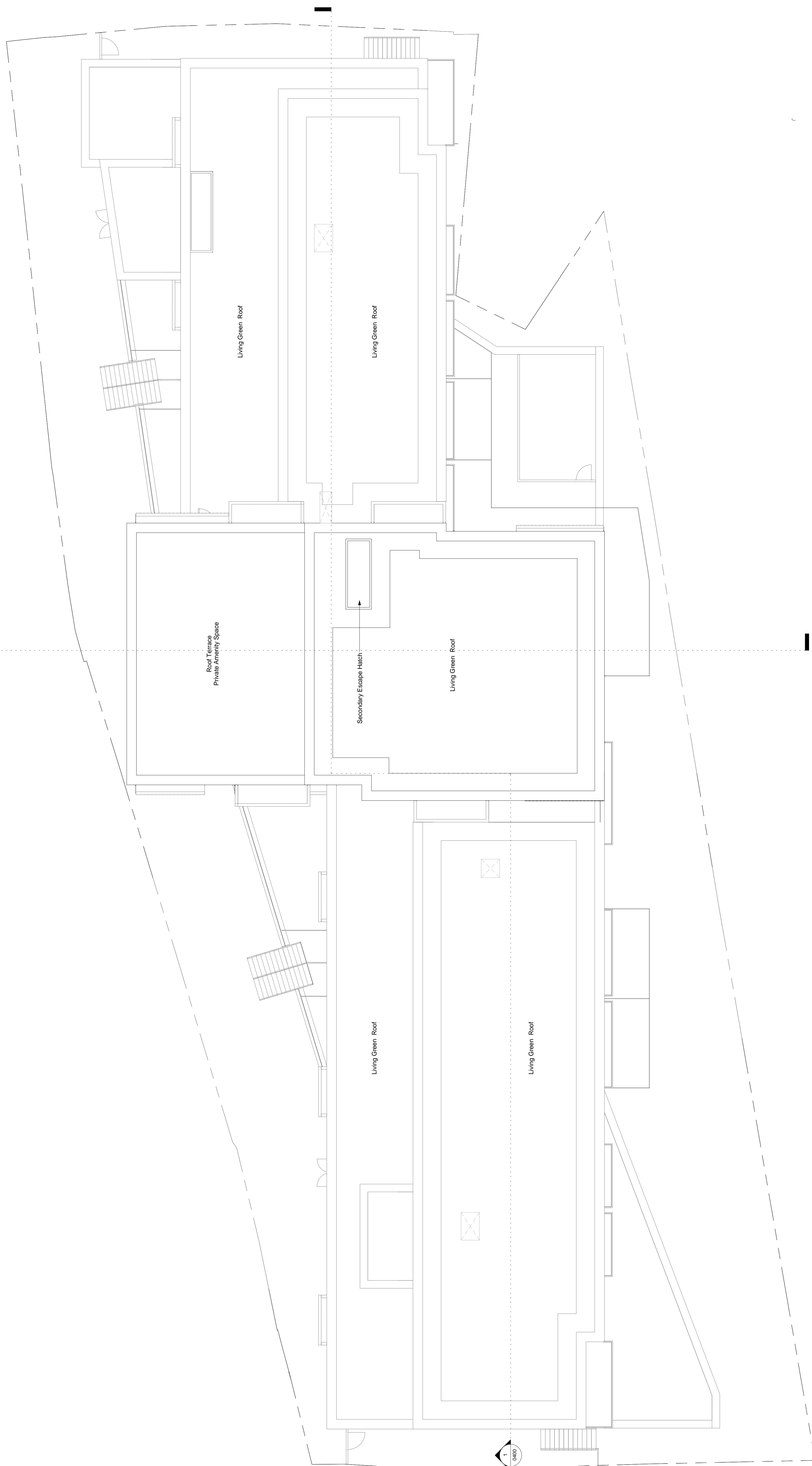
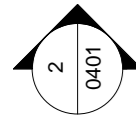
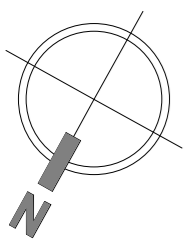






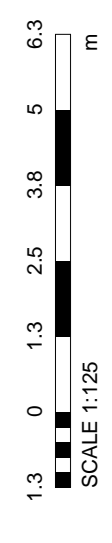
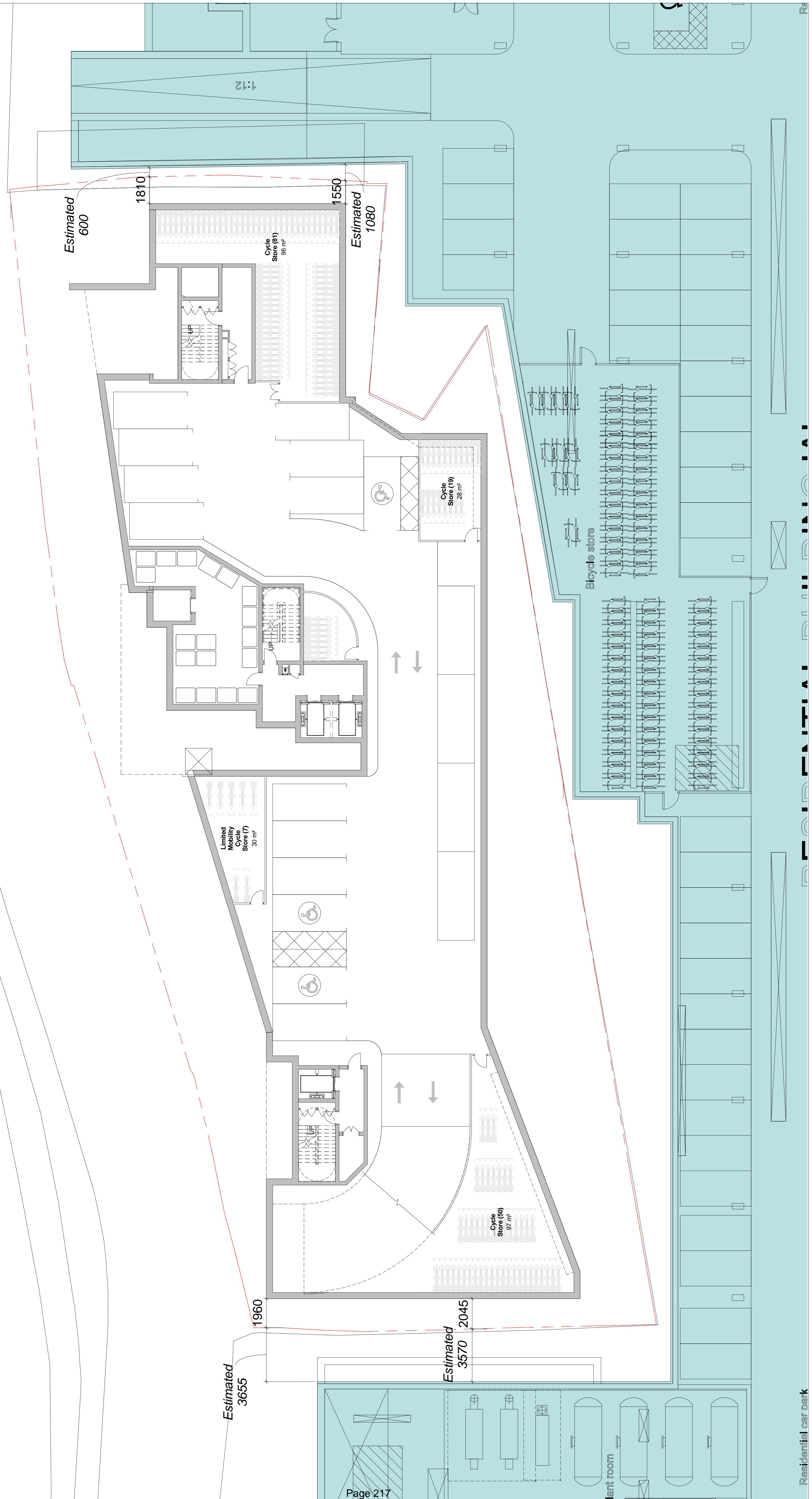
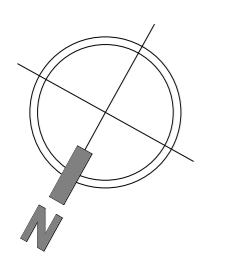






POSITION OF ADJACENT AFC WIMBLEDON GALLIARD HOMES & GREYHOUND RACING ACQUISITION SCHEME (APPLICATION NUMBER 14/P4361) IS APPROXIMATE. ALL DIMENSIONS FROM VOLANTE SITE BOUNDARY ARE ESTIMATED.

ALL DIMENSIONS ARE APPROXIMATE.



This page is intentionally left blank