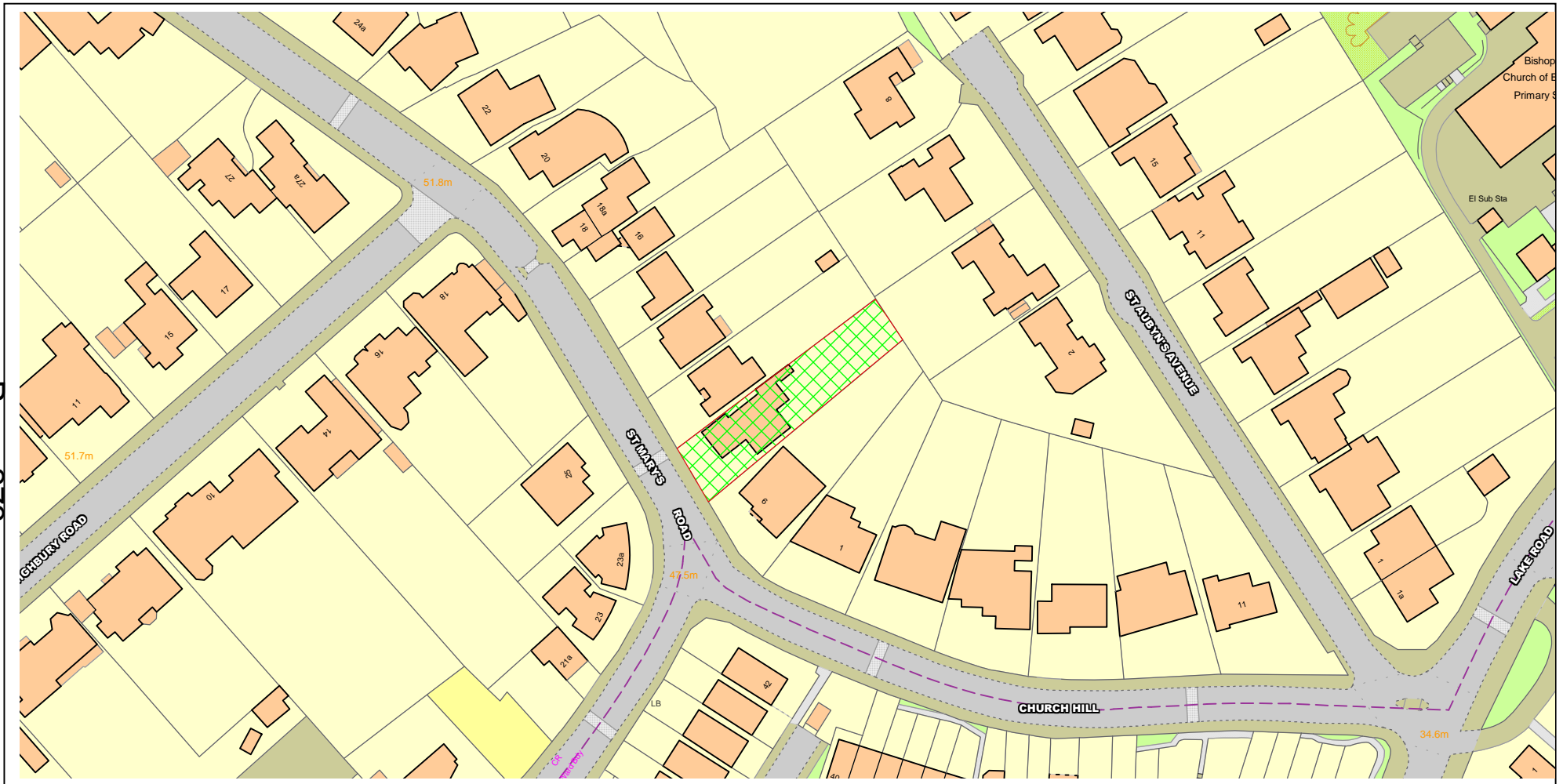


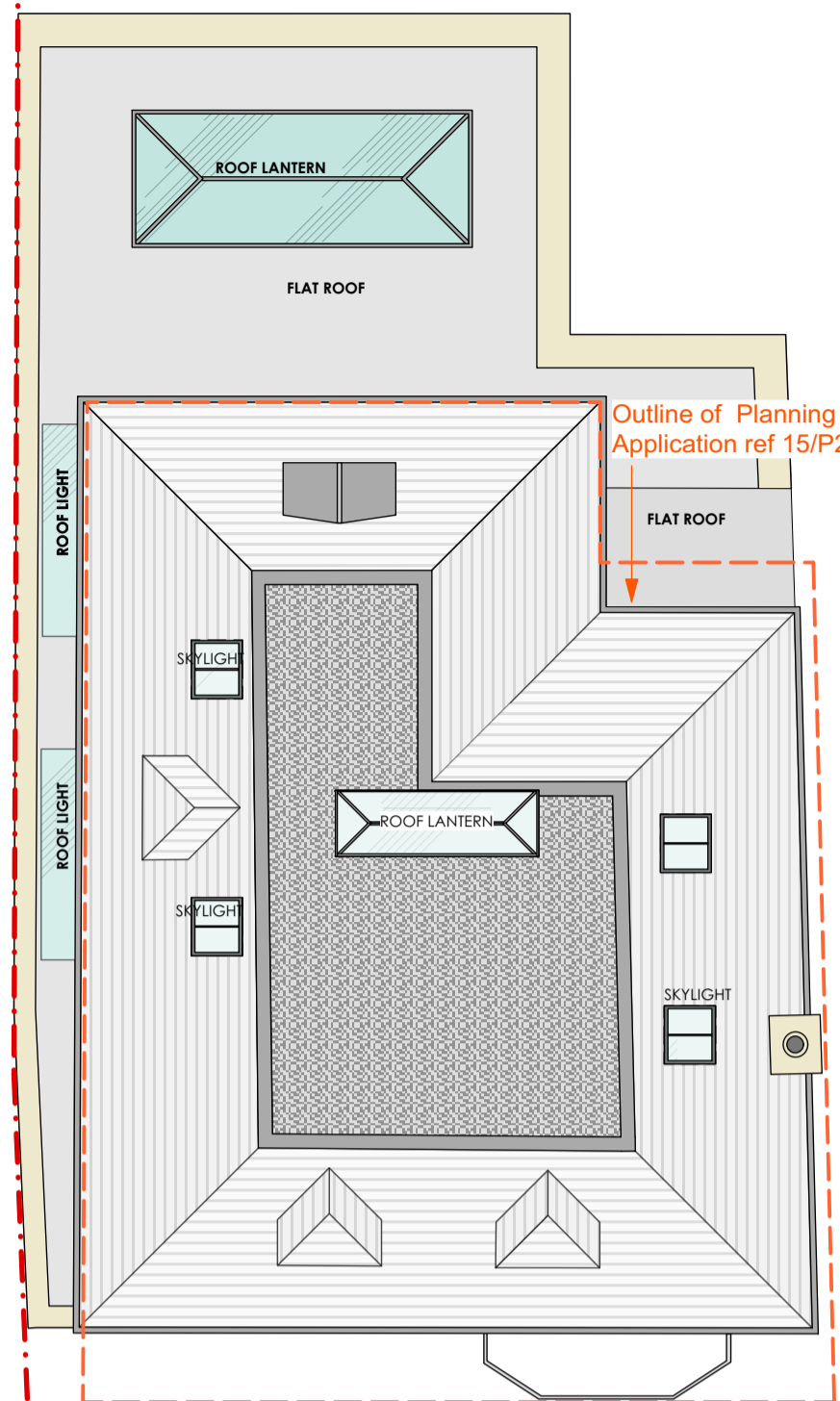
# NORTHGATE SE GIS Print Template

Page 273

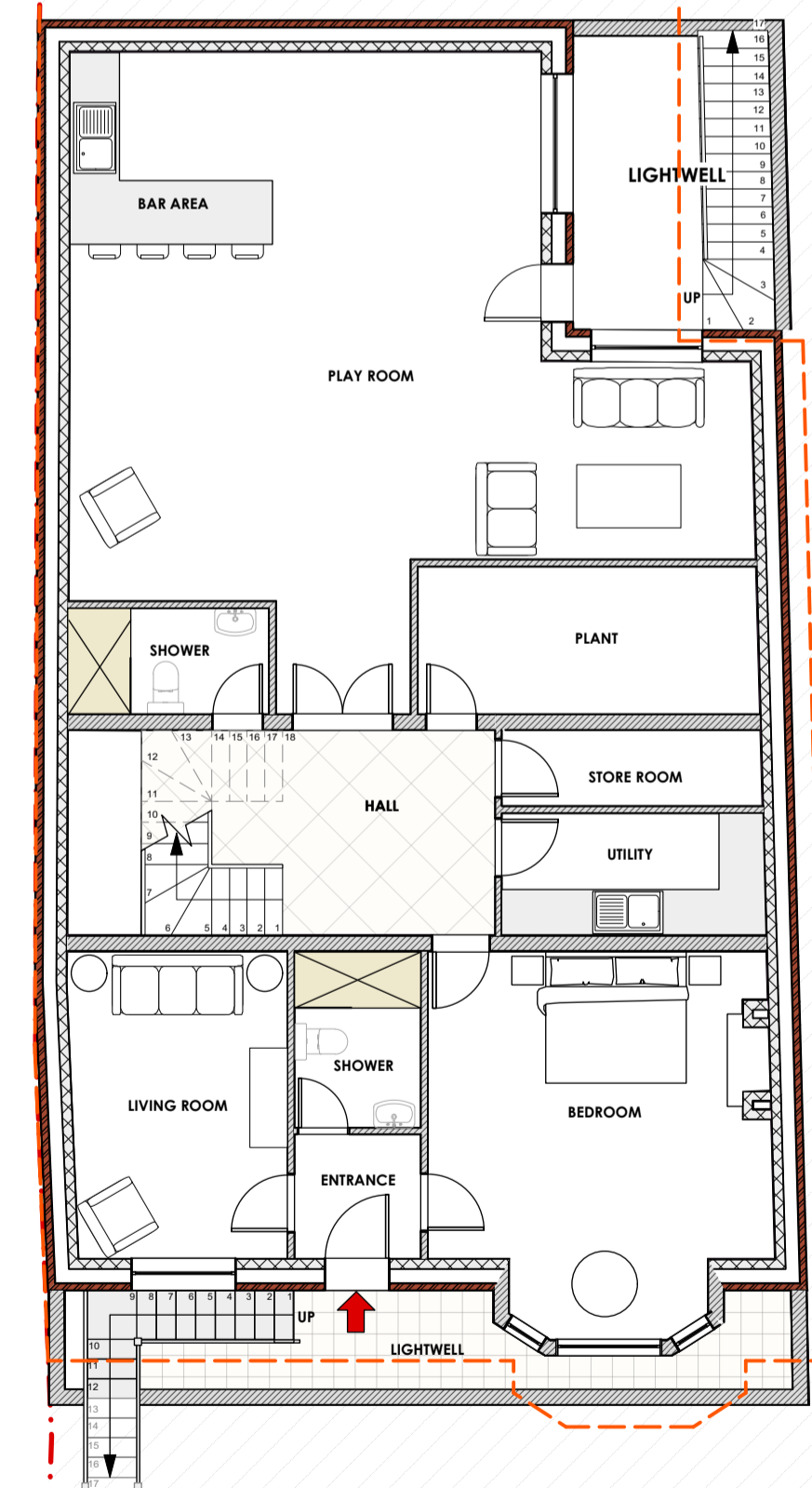


Text Details 8 St Marys Road

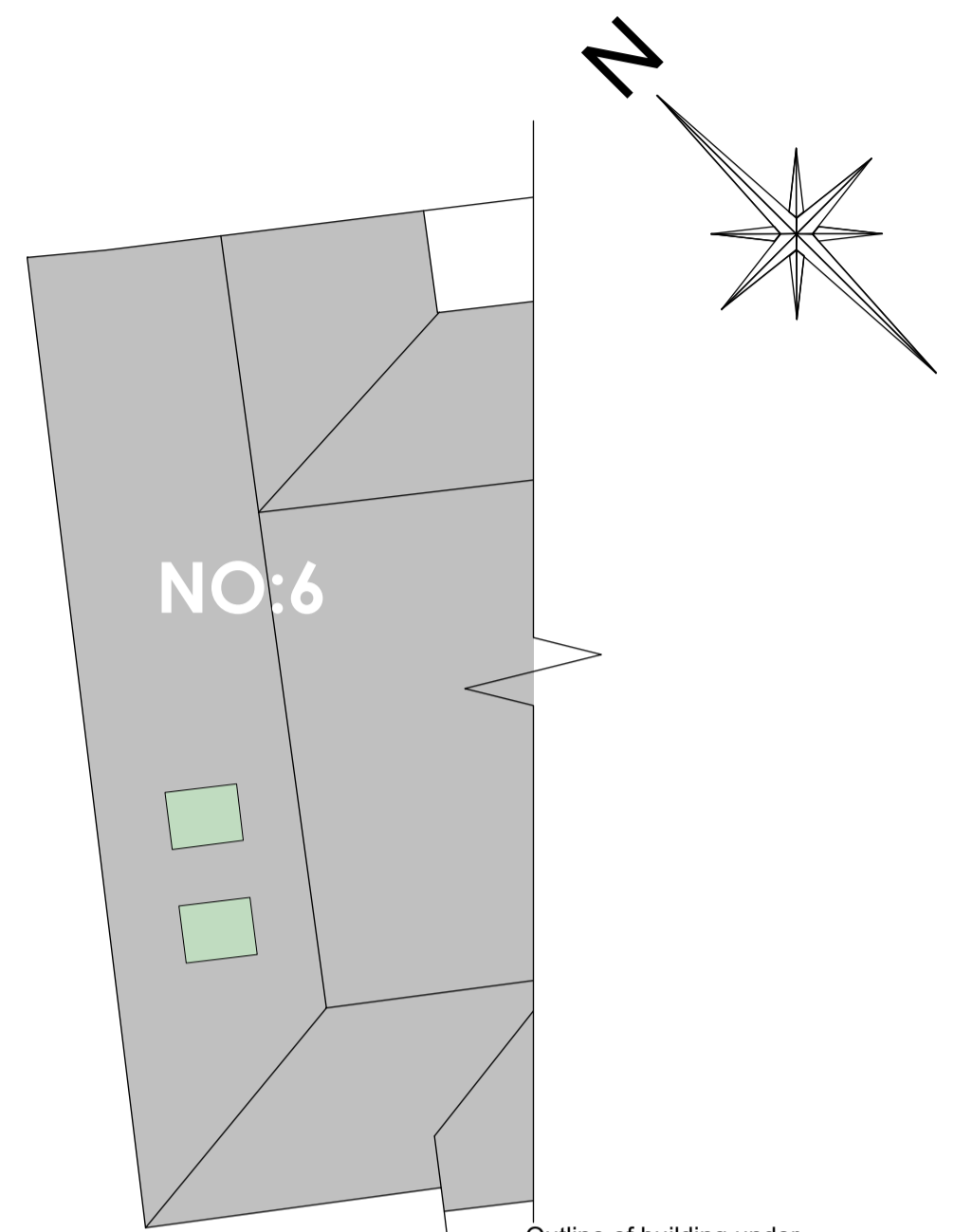
This material has been reproduced from Ordnance Survey digital map data with the permission of the controller of Her Majesty's Stationery Office, © Crown Copyright.



ROOF PLAN



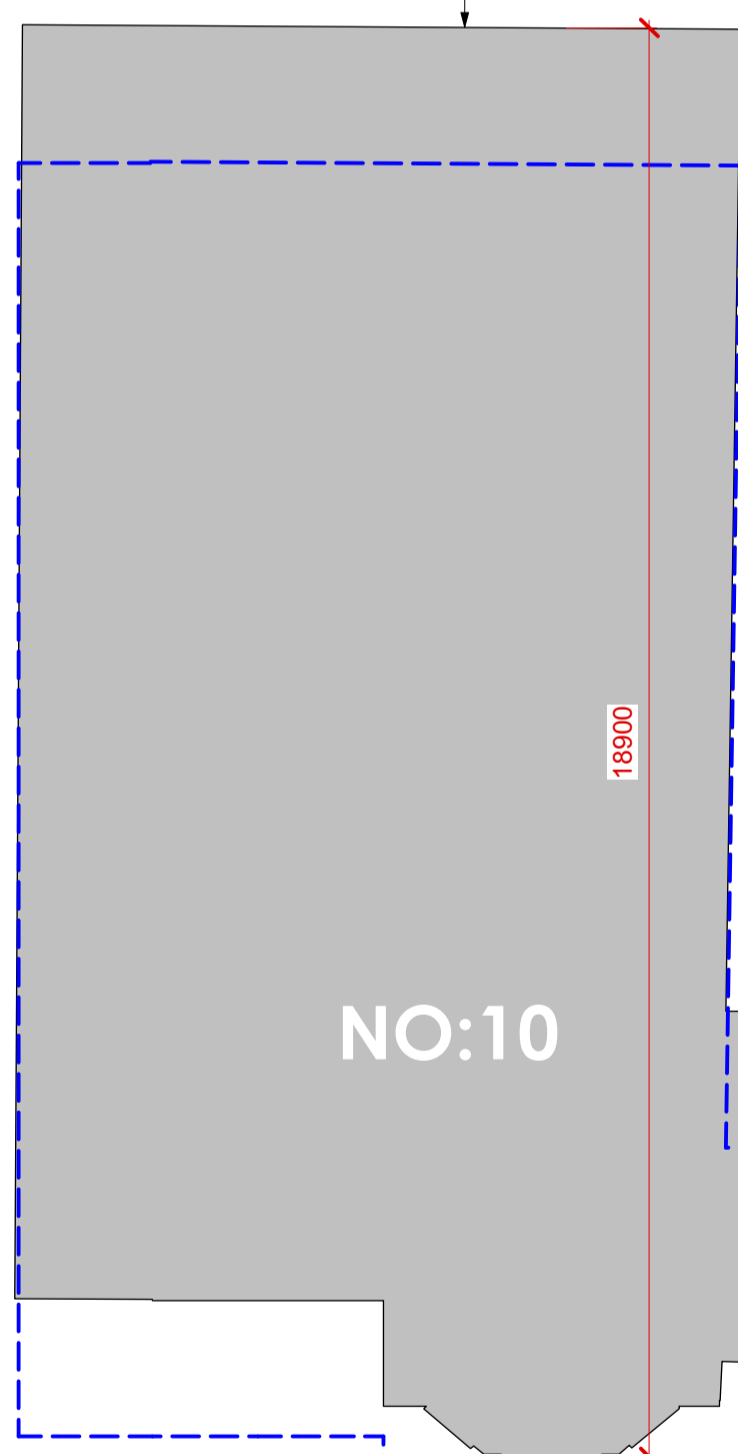
BASEMENT PLAN



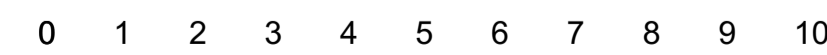
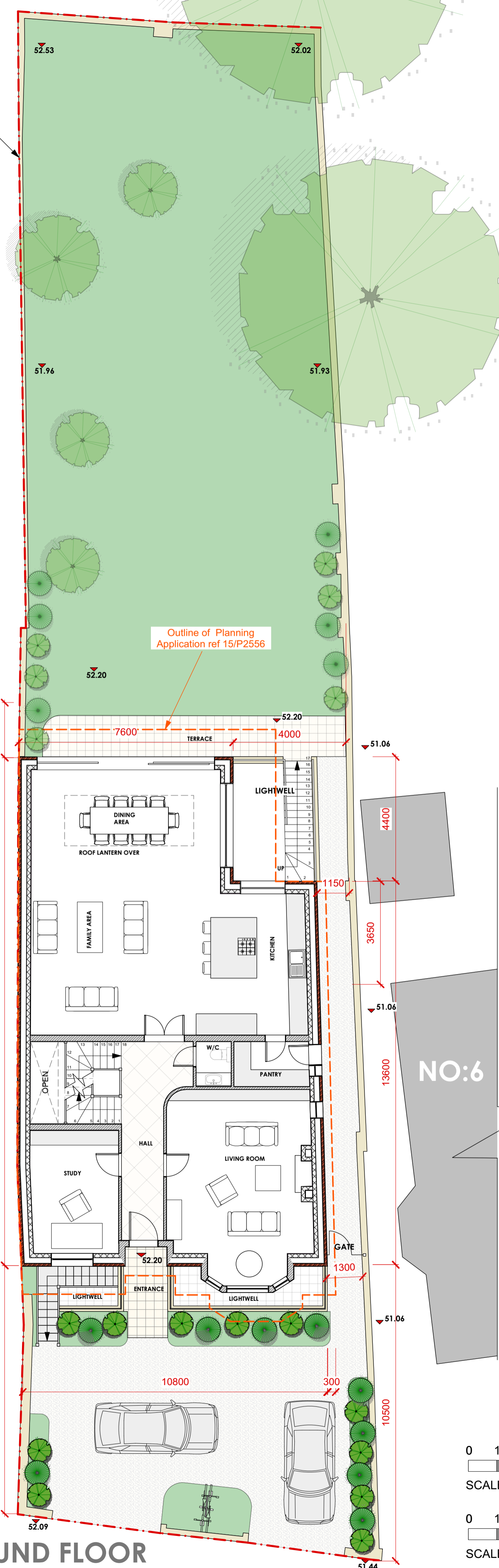
SITE BOUNDARY

NO:6

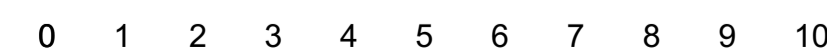
NO:10



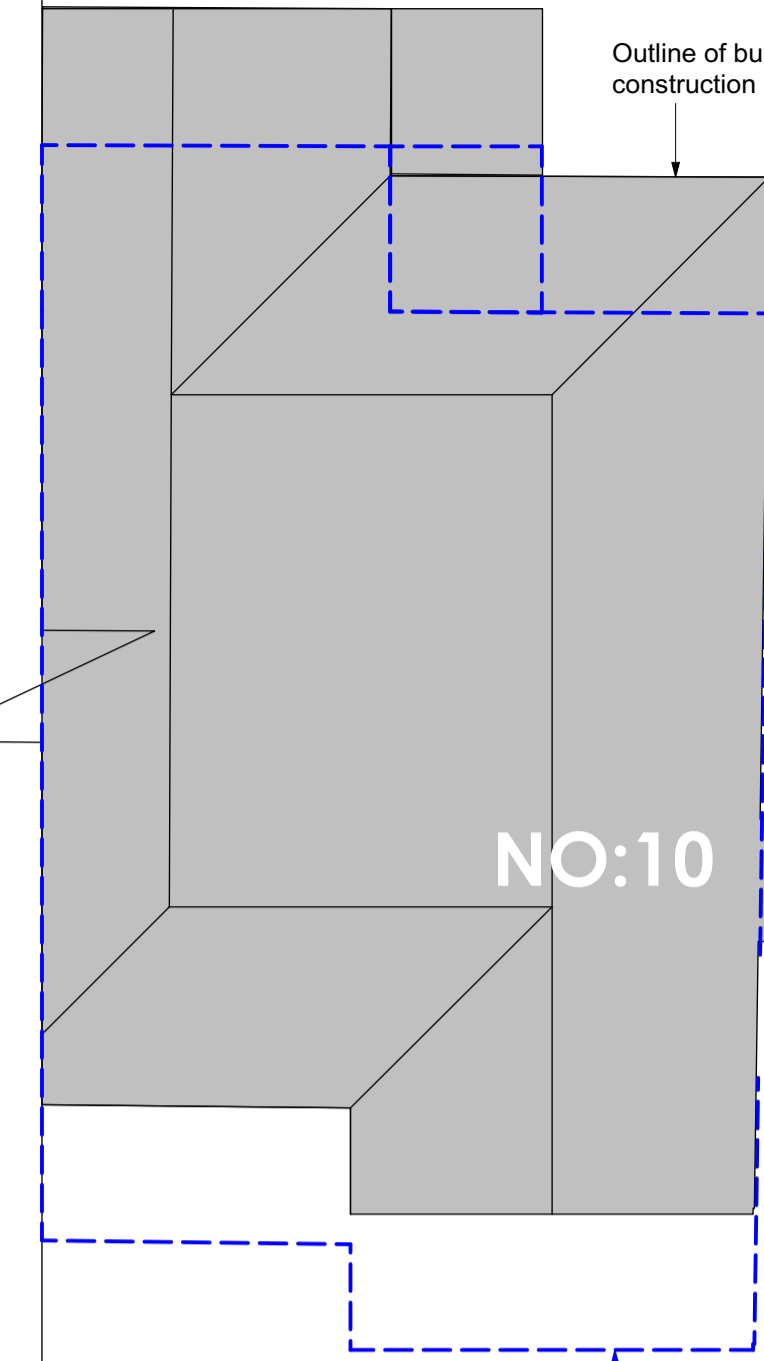
GROUND FLOOR



SCALE 1:100 @ A1

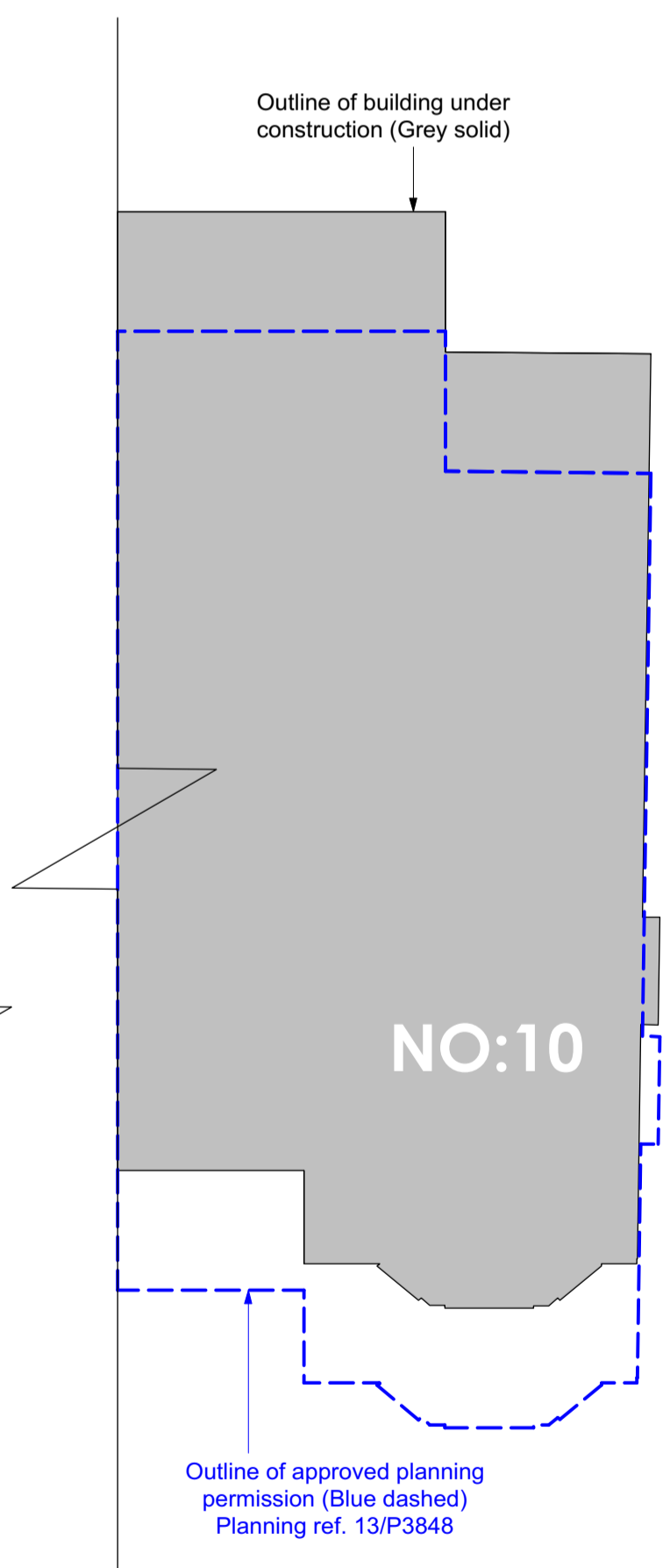


SCALE 1:200 @ A3



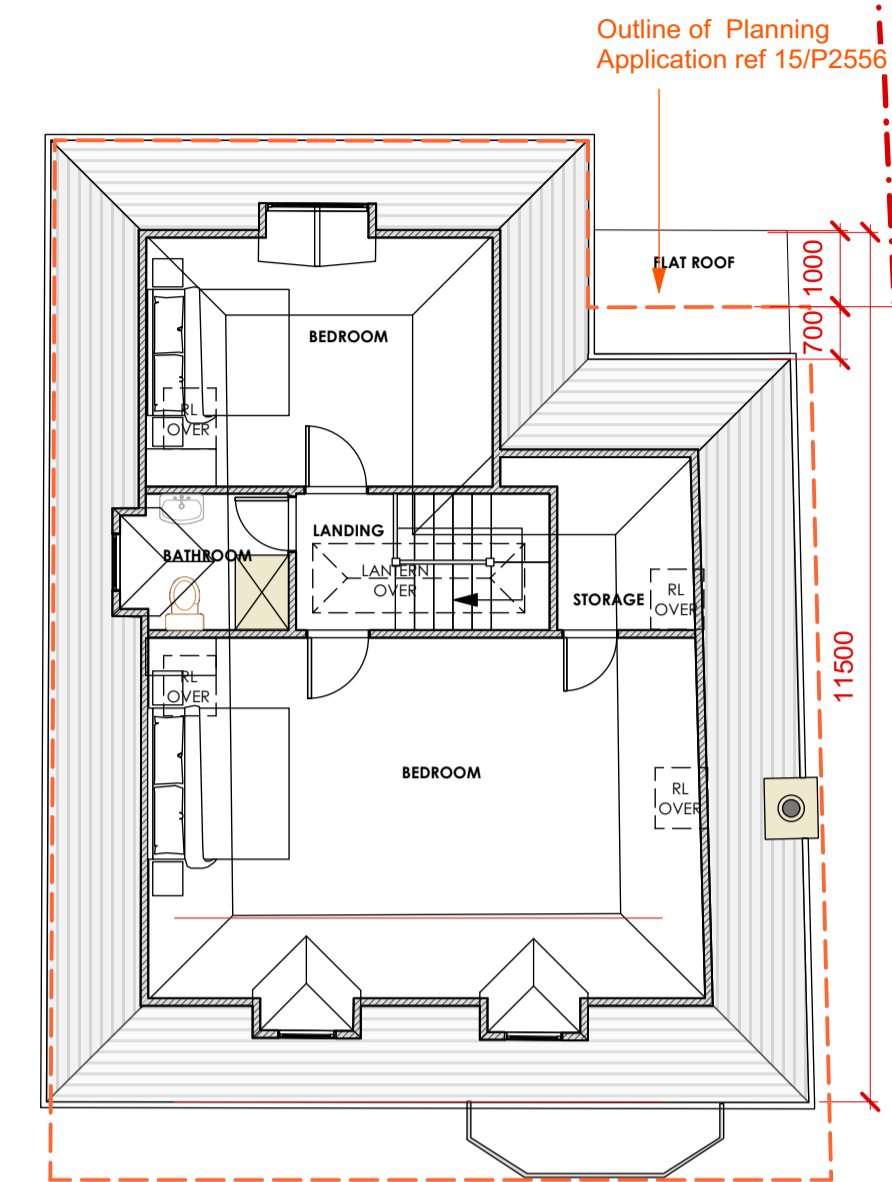
Outline of building under construction (Grey solid)

Outline of approved planning permission (Blue dashed) Planning ref. 13/P3848

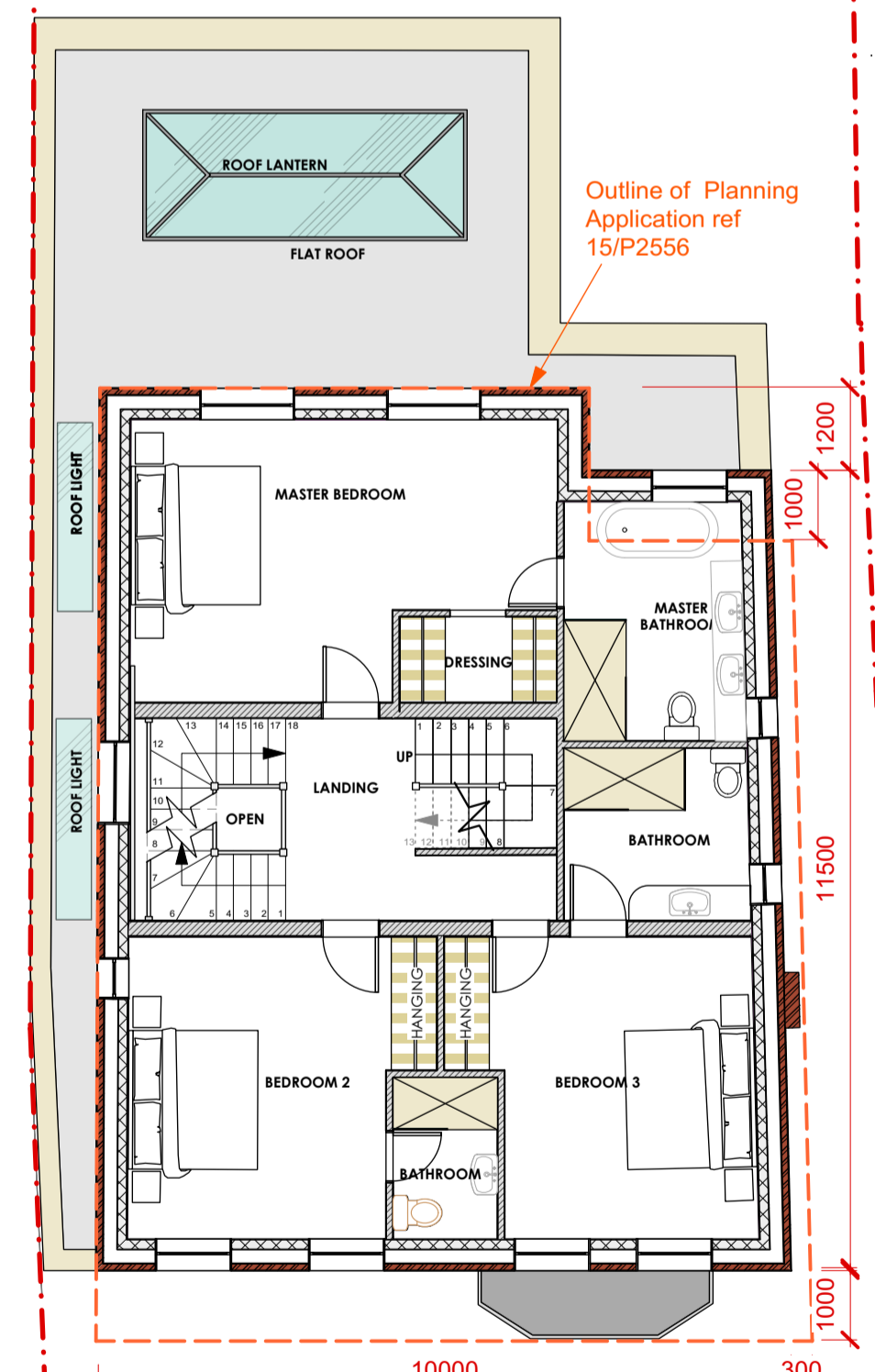


Outline of building under construction (Grey solid)

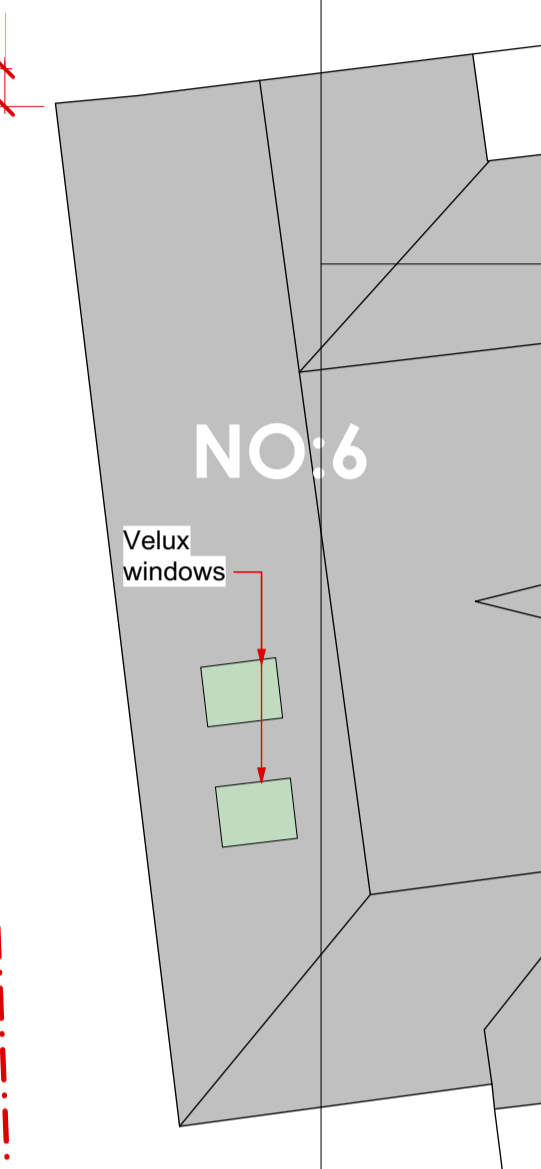
Outline of approved planning permission (Blue dashed) Planning ref. 13/P3848



SECOND FLOOR

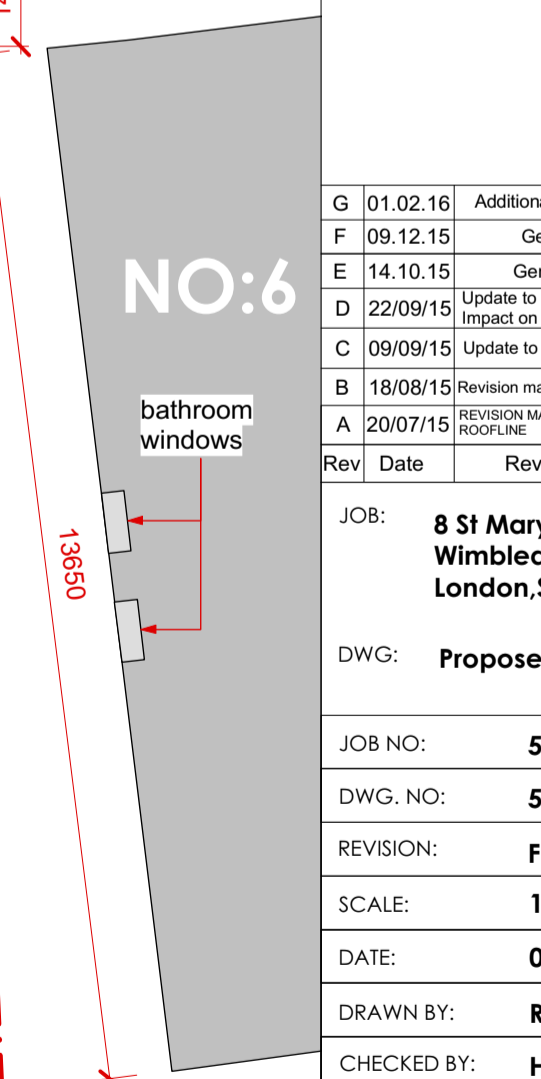


FIRST FLOOR



NO:6

Velux windows



NO:6

bathroom windows

NOTES:

UNUSUAL RISKS IDENTIFIED IN CDM RISK ASSESSMENT:

Rev	Date	Revisions	By
G	01.02.16	Additional dimensions shown	KR
F	09.12.15	General Revision	KR
E	14.10.15	General revisions	KR
D	22/09/15	Update to location of No.10 Impact on windows of No.8	KR
C	09/09/15	Update to existing building	KR
B	18/08/15	Revision made following LA site visit.	KR
A	20/07/15	REVISION MADE TO NEIGHBOURING ROOFLINE	RF

JOB: 8 St Mary Road, Wimbledon London, SW19

DWG: Proposed Plans

JOB NO: 598

DWG. NO: 598/P01

REVISION: F

SCALE: 1:100 @ A1

DATE: 06/06/2015

DRAWN BY: RF

CHECKED BY: HH

DWG. STATUS: PLANNING

Do not scale this drawing

All dimensions to be checked on site

Holden Harper copyright reserved

**Holden Harper**  
 chartered architects & engineers  
 26 High Street, Wimbledon London, SW19 5BY  
 Telephone: 020 8946 5502  
 Email: arch@holdenharper.co.uk