

DISCLAIMER:
 SHEPPARD ROBSON HAS PREPARED THIS DOCUMENTATION FOR THE CLIENT AND THE CLIENT HAS AGREED TO ACCEPT THE DESIGN AND CONSTRUCTION OF THE PROJECT. SHEPPARD ROBSON HAS NOT CONDUCTED A VISUAL QUALITY ANALYSIS OF THE PROJECT AND HAS NOT CONDUCTED A VISUAL QUALITY ANALYSIS OF THE PROJECT. SHEPPARD ROBSON HAS NOT CONDUCTED A VISUAL QUALITY ANALYSIS OF THE PROJECT AND HAS NOT CONDUCTED A VISUAL QUALITY ANALYSIS OF THE PROJECT. SHEPPARD ROBSON HAS NOT CONDUCTED A VISUAL QUALITY ANALYSIS OF THE PROJECT AND HAS NOT CONDUCTED A VISUAL QUALITY ANALYSIS OF THE PROJECT.

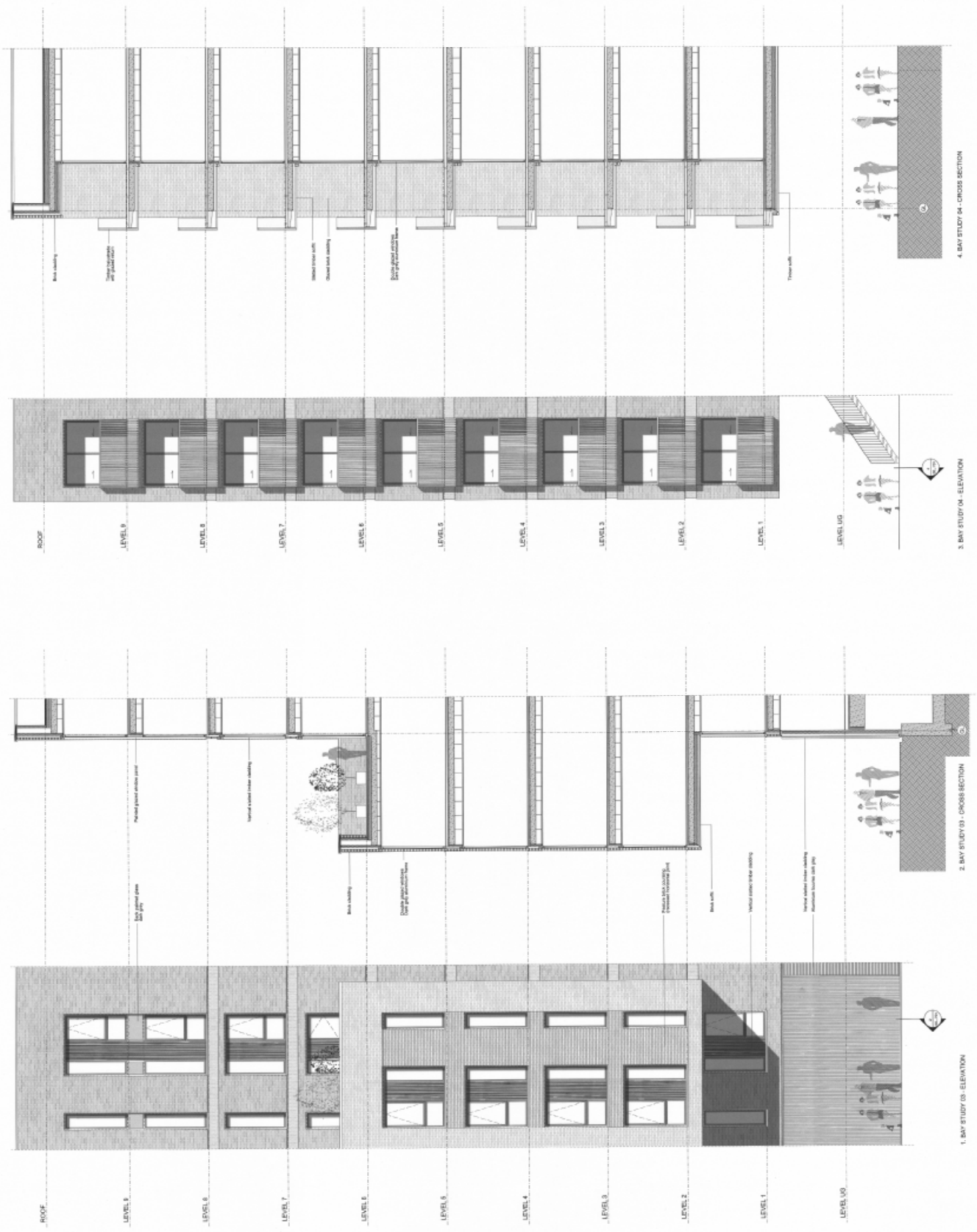
4/21/14

REV. DATE REVISION

REV. DATE REVISION



SHEPPARD ROBSON
 100 KING STREET WEST, SUITE 2000, TORONTO, ONTARIO M5X 1C4
 TEL: 416-947-8800 FAX: 416-947-8801
 WWW.SHEPPARDROBSON.COM
GALLIARD HOMES
 100 KING STREET WEST, SUITE 2000, TORONTO, ONTARIO M5X 1C4
 TEL: 416-947-8800 FAX: 416-947-8801
 WWW.GALLIARDHOMES.COM
THE WINDSOR PARK DEVELOPMENT
 1100 SHEPPARD AVENUE EAST, UNIT 101, SCARBOROUGH, ONTARIO M1S 1T5
RESIDENTIAL BUILDING A
4 BAY STUDY 04 - NORTH ELEVATION
 11/11/13
 PLANNERS
 416-491-7070



This page is intentionally left blank